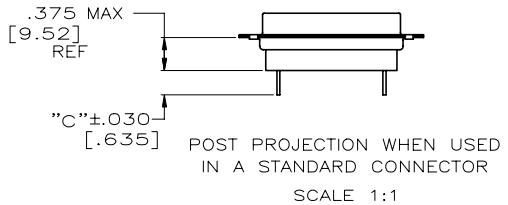
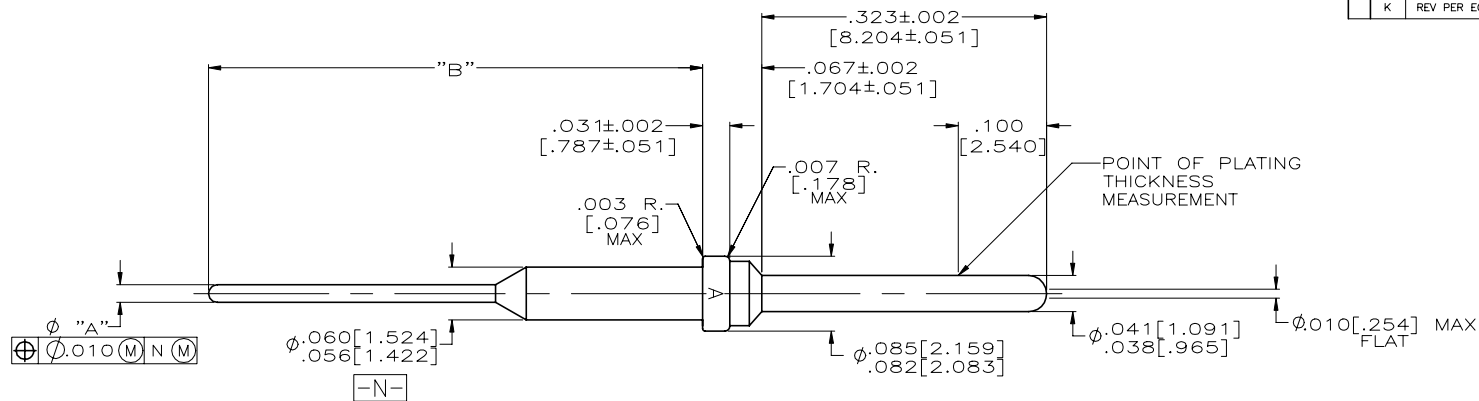


REVISIONS					
REV	DATE	BY	CHK	APPV	DESCRIPTION
K	2-2-21	CT	RL		REV PER ECO 20-017652



PRELIMINARY- NOT RELEASED FOR PRODUCTION

PRELIMINARY- NOT RELEASED FOR PRODUCTION

PRELIMINARY- NOT RELEASED FOR PRODUCTION

	DIM C	DIM B	DIM A	PART NUMBER
	.170 [4.32]	.400 [10.16]	.032/.028 [813/.7112]	2-212565-5
	.330 [8.38]	.560 [14.224]	.020/.016 [508/.406]	2-212565-3
	.330 [8.38]	.560 [14.224]	.0192/.0155 [4877/.3937]	2-212565-2
	.470 [11.94]	.700 [17.78]	.020/.016 [508/.406]	2-212565-1
	.330 [8.38]	.560 [14.224]	.020/.016 [508/.406]	1-212565-0
OBSOLETE	.161 [4.089]	.446 [11.328]	.042/.038 [1067/.965]	212565-9
OBSOLETE	.161 [4.089]	.446 [11.328]	.032/.028 [813/.7112]	212565-8
OBSOLETE	.161 [4.089]	.446 [11.328]	.026/.022 [660/.559]	212565-7
OBSOLETE	.130 [3.302]	.415 [10.541]	.042/.038 [1067/.965]	212565-6
OBSOLETE	.130 [3.302]	.415 [10.541]	.032/.028 [813/.7112]	212565-5
OBSOLETE	.130 [3.302]	.415 [10.541]	.026/.022 [660/.559]	212565-4
OBSOLETE	.098 [2.489]	.383 [9.728]	.042/.038 [1067/.965]	212565-3
OBSOLETE	.098 [2.489]	.383 [9.728]	.032/.028 [813/.7112]	212565-2
OBSOLETE	.098 [2.489]	.383 [9.728]	.026/.022 [660/.559]	212565-1

- 1. CONTACT BODY MAT'L: LEADED NICKEL COPPER (PROPRIETARY) EQUIVALENT ALTERNATE MAT'L: COPPER ALLOY PER ASTM-B-197
- 2. FINISH: PLATED GOLD PER MIL-G-45204 TYPE II, GRADE C CLASS 1 OVER COPPER PER MIL-C-14550, CLASS IV.
- 3. FOR USE IN P.C. BOARD.
- 4. CONTACT CAN BE USED IN ANY STANDARD HD-20 PLUG CONNECTOR.
- 5. INSERTION/EXTRACTION TOOL AMP P/N 91067-2.
- 6. CONTACTS MEET ALL APPLICABLE PERFORMANCE REQUIREMENTS OF MIL-C-39029.

THIS DRAWING IS A CONTROLLED DOCUMENT.

<p>DIMENSIONS: INCHES</p> <p>TOLERANCES UNLESS OTHERWISE SPECIFIED:</p> <p>0 PLC ± -</p> <p>1 PLC ± -</p> <p>2 PLC ± -</p> <p>3 PLC ± .005 [0.13]</p> <p>4 PLC ± -</p> <p>ANGLES ± -</p>	<p>OWN: T. ALEXANDER 11-12-91</p> <p>CHK: F. KINSEY 11-18-91</p> <p>APPV: F. KINSEY 11-18-91</p> <p>NAME: F. KINSEY</p> <p>PRODUCT SPEC: -</p> <p>APPLICATION SPEC: -</p> <p>WEIGHT: 0.000000</p> <p>CUSTOMER DRAWING</p>	<p>TE Connectivity</p> <p>POSTED PIN, AMPLIMITE, SIZE 20</p> <p>SIZE: A2 CAGE CODE: 00779 DRAWING NO: 212565</p> <p>SCALE: 10:1 SHEET: 1 of 1 REV: K</p>
--	---	--

单击下面可查看定价，库存，交付和生命周期等信息

[>>TE Connectivity\(泰科\)](#)