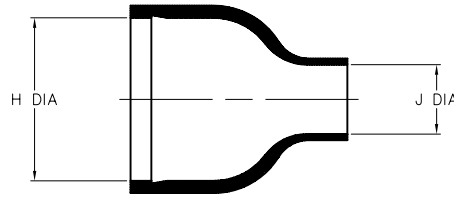
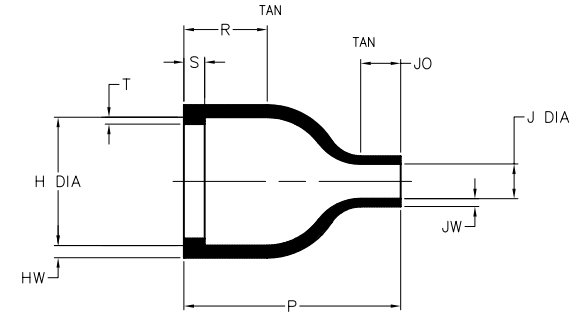


NOTES

1. ALL DIMENSIONS ARE IN $\frac{\text{INCHES}}{[\text{MILLIMETERS}]}$
2. DIMENSIONS APPEARING IN TABLE ARE AS FOLLOWS:
 - a - AS SUPPLIED
 - b - AFTER UNRESTRICTED RECOVERY
3. COATING (ADHESIVE) IS OPTIONAL. AS SUPPLIED DIMENSIONS APPEARING IN TABLE ARE FOR UNCOATED PARTS. WHEN COATING IS ADDED, ENTRY DIAMETERS WILL BE REDUCED BY .06 MAX.



AS SUPPLIED



AFTER UNRESTRICTED RECOVERY

REVISIONS		
LTR	DESCRIPTION	DATE
B	ECD-08-007623	03/26/2008

PART NUMBER	H		J		P ±10%	R ±10%	S ±10%	T ±10%	HW ±20%	JW ±20%	JO ±10%
	MIN	MAX	MIN	MAX							
	a	b	a	b	b	b	b	b	b	b	
202E532	$\frac{1.16}{[29,5]}$	$\frac{.74}{[18,8]}$	$\frac{.55}{[14,0]}$	$\frac{.20}{[5,1]}$	$\frac{1.25}{[31,7]}$	$\frac{.48}{[12,2]}$	$\frac{.12}{[3,0]}$	$\frac{.04}{[1,0]}$	$\frac{.07}{[1,8]}$	$\frac{.045}{[1,1]}$	$\frac{.23}{[5,8]}$

If this document is printed it becomes uncontrolled. Check for the latest revision

CUSTOMER DRAWING

COMPATIBILITY CHART

MATERIAL DASH NO.	MATERIAL DESCRIPTION	RT SPEC	COATING NO.	COATING SPEC
-25	ELASTOMER, FLUID RESISTANT	RT-1325	/86	S-1048
			/225	S-1206

UNLESS OTHERWISE SPECIFIED DIMENSIONS ARE INCHES. METRIC DIMENSIONS ARE IN BRACKETS.		DRAWN UNGUYEN	DATE 03/26/2008	<p>Raychem Molded Parts 305 Constitution Dr Menlo Park, CA 94025</p>
DECIMAL TOLERANCES .XXX ± 0.005 [0.13 mm] .XX ± 0.01 [0.25 mm] .X ± 0.1 [0.50 mm]		THIRD ANGLE PROJECTION		
ANGLE TOLERANCE .X ± 1 DEG.		© 2007-2008 Tyco Electronics Corporation. All rights reserved.		SIZE CODE IDENT. NO. DWG. NO. B 06090 202E532
DO NOT SCALE THIS DRAWING			SHEET 1 OF 1	

单击下面可查看定价，库存，交付和生命周期等信息

[>>TE Connectivity\(泰科\)](#)