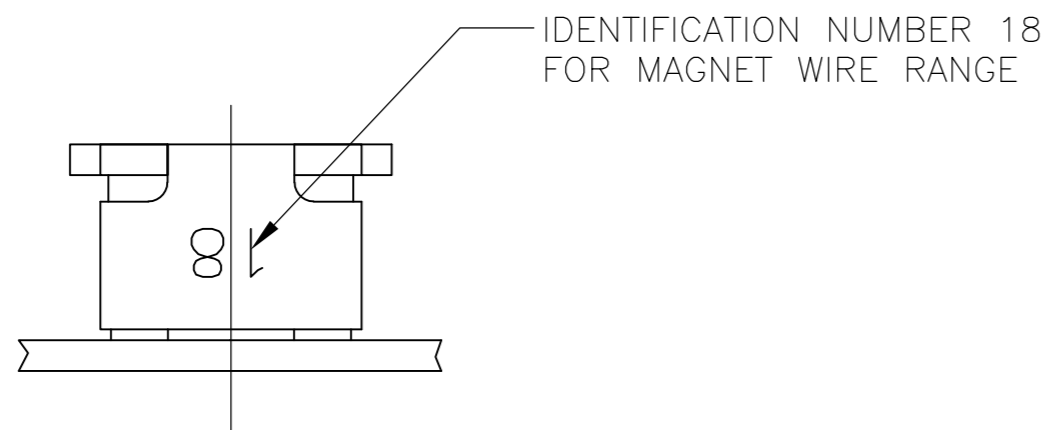
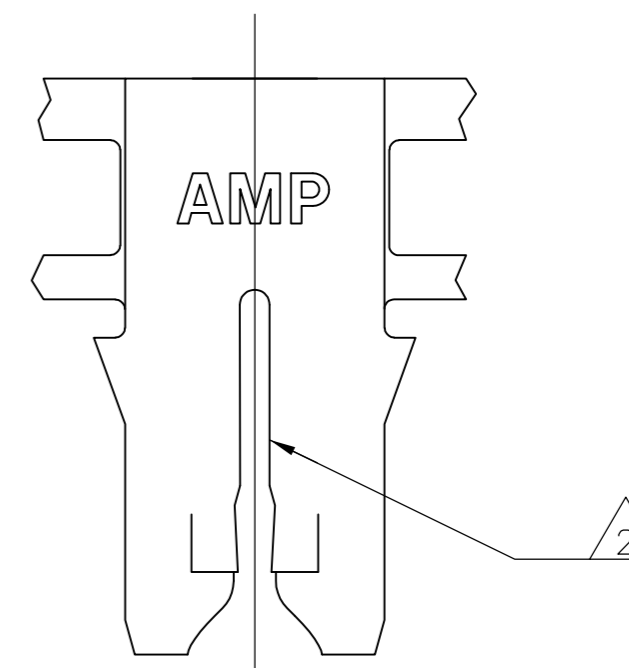
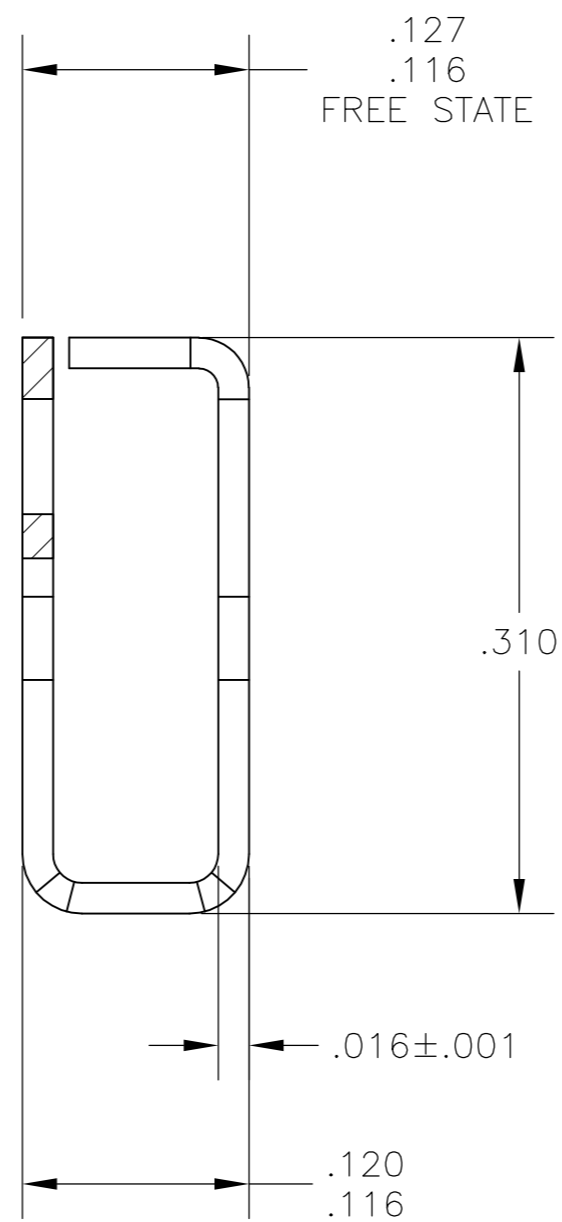
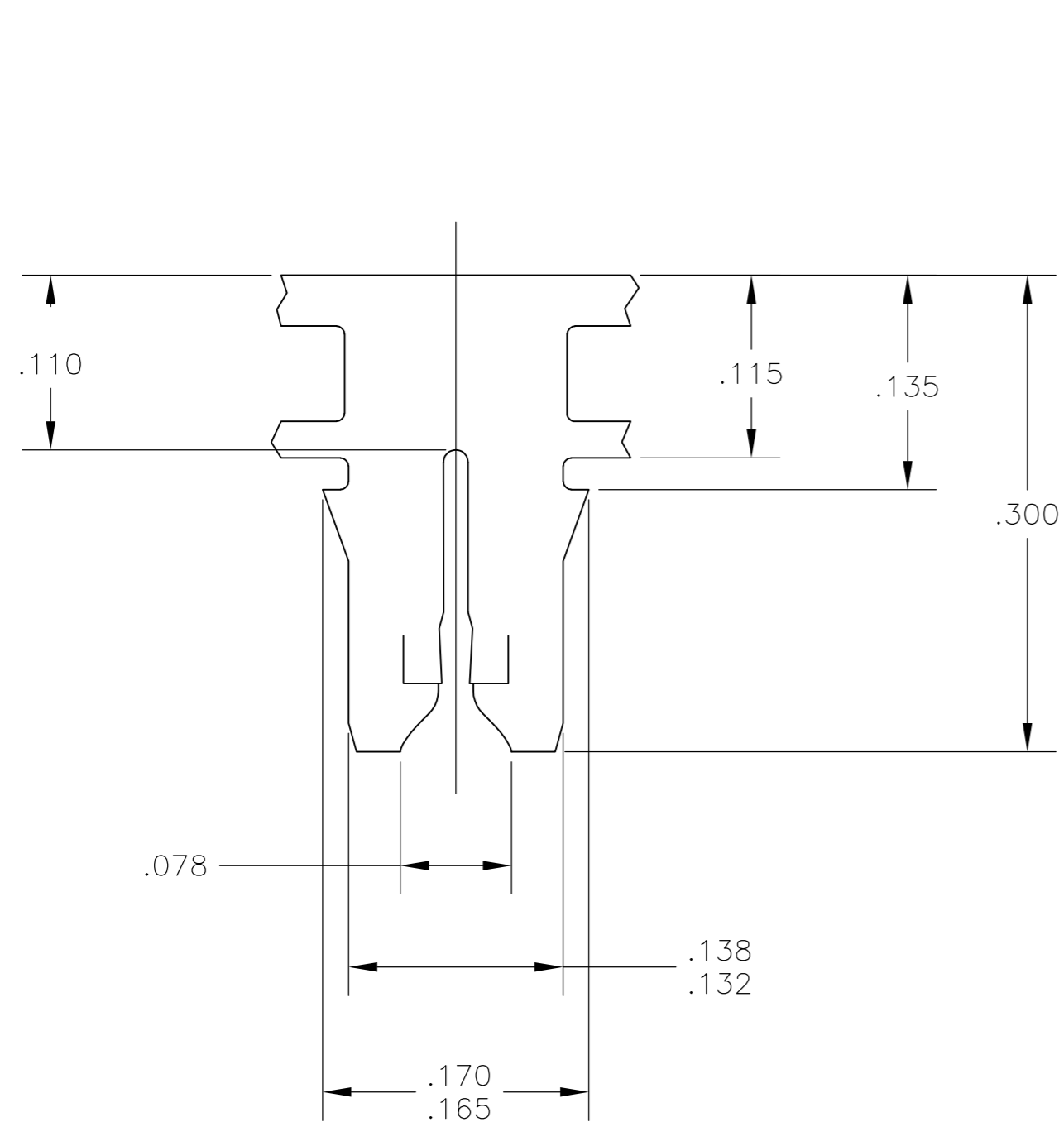


THIS DRAWING IS UNPUBLISHED. RELEASED FOR PUBLICATION
 © COPYRIGHT - By - ALL RIGHTS RESERVED.

LOC		DIST		REVISIONS			
P	LTR	DESCRIPTION		DATE	DWN	APVD	
	B6	REVISED PER ECR ECR-13-011405		17JUL13	GRZ	DZ	



- 1 CONTINUOUS STRIP ON REELS (NO SPLICES) WITH TERMINALS LOCATED ON $.220 \pm .003$ CENTERS.
- 2 SLOT ACCEPTS 0.64-0.81mm [#22-#20] AWG COPPER MAGNET WIRE. SINGLE OR DOUBLE WIRE OF THE SAME SIZE AND TYPE.
- 3 PREPRODUCTION - FASR REQUIRED
- 4 SPECIAL CAVITY ANVIL LOCATION REQUIRED $4.83 \pm 0.07 [.190 \pm .003]$ REF APPLICATION SPEC 114-2046, SEC. 3.2 NOTE 7 REVISION T OR LATER.



REVERSE	1217973-2
OBSOLETE STANDARD	3 1217973-1
REELING	PART NUMBER

THIS DRAWING IS A CONTROLLED DOCUMENT.		DWN	15JUL03																		
DIMENSIONS: INCHES		CHK	15JUL03																		
TOLERANCES UNLESS OTHERWISE SPECIFIED:		KURT A. RANDOLPH																			
<table border="1"> <tr><td>0 PLC</td><td>±</td><td>-</td></tr> <tr><td>1 PLC</td><td>±</td><td>-</td></tr> <tr><td>2 PLC</td><td>±</td><td>.010</td></tr> <tr><td>3 PLC</td><td>±</td><td>-</td></tr> <tr><td>4 PLC</td><td>±</td><td>-</td></tr> <tr><td>ANGLES</td><td>±</td><td>-</td></tr> </table>		0 PLC	±			-	1 PLC	±	-	2 PLC	±	.010	3 PLC	±	-	4 PLC	±	-	ANGLES	±	-
0 PLC	±	-																			
1 PLC	±	-																			
2 PLC	±	.010																			
3 PLC	±	-																			
4 PLC	±	-																			
ANGLES	±	-																			
MATERIAL: H04 PHOS BRONZE		APVD	15JUL03	NAME: KURT A. RANDOLPH																	
FINISH: .000080 MIN TIN OVER .000020 MIN NICKEL		PRODUCT SPEC: 108-2012		TERMINAL, SPLICE, MAG-MATE																	
		APPLICATION SPEC: 114-2046 4		SIZE: A2	CAGE CODE: 00779																
		WEIGHT: -		DRAWING NO: 1217973	RESTRICTED TO: -																
		CUSTOMER DRAWING		SCALE: 10:1	SHEET: 1 of 1																
				REV: B6																	

单击下面可查看定价，库存，交付和生命周期等信息

[>>TE Connectivity\(泰科\)](#)