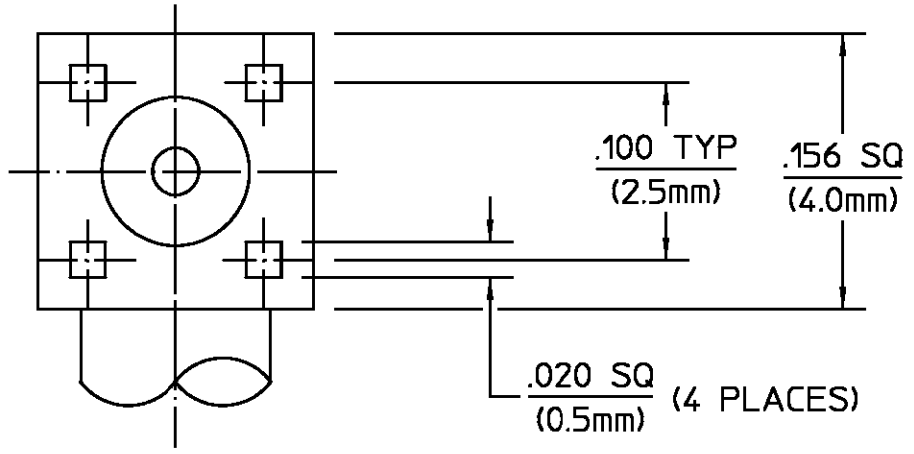
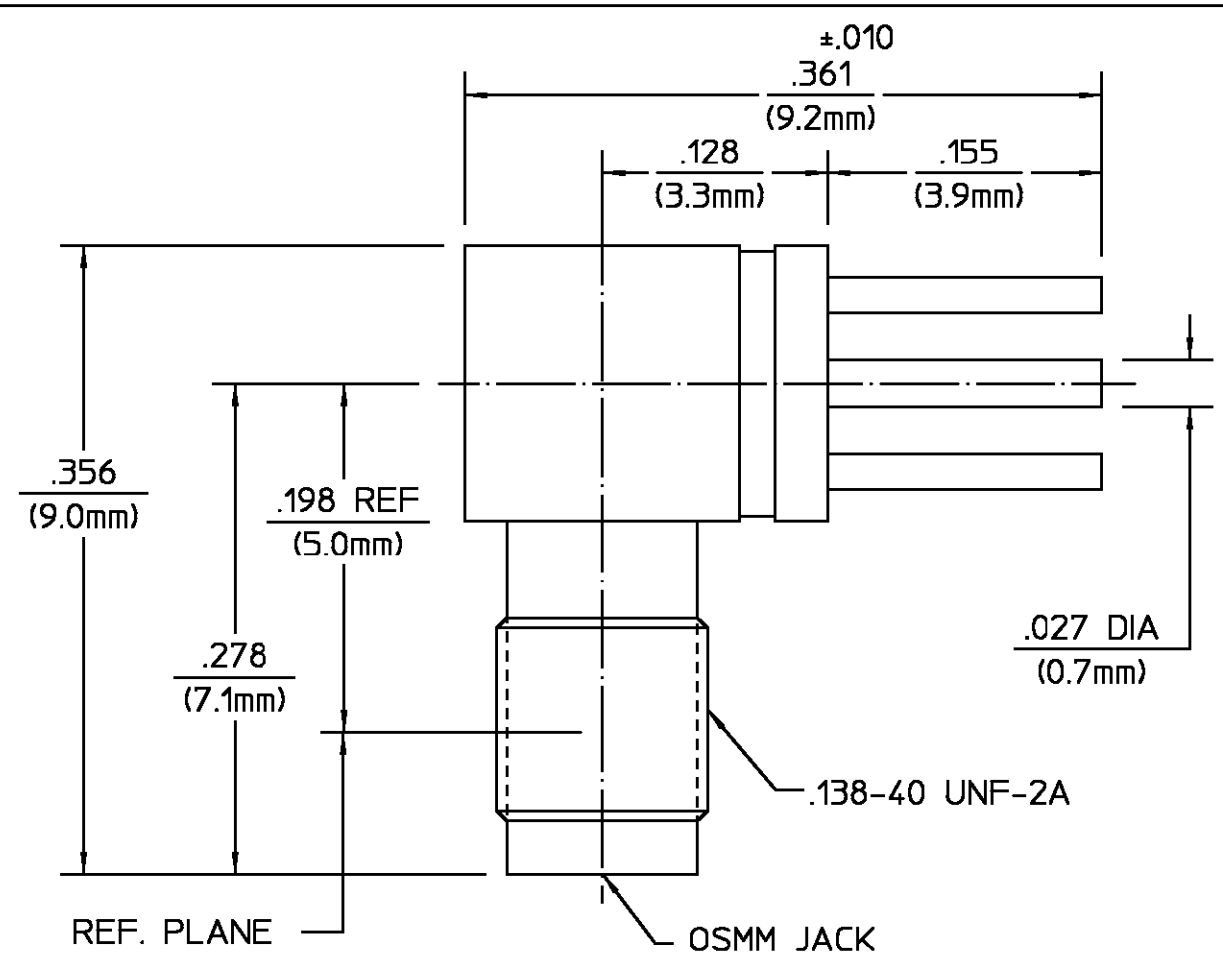


REVISIONS			
REV	DESCRIPTION	DATE	APPROVED
C	PER EC OS14-0014-02	2/5/02	DCM



ELECTRICAL	
Nominal Impedance (Ohms)	50
Frequency Range (GHz) DC To	18.0
Volt Rating (VRMS MAX) At Sea Level	190
VSWR	N/A
Insertion Loss (dB MAX)	N/A
RF Leakage	N/A
Corona, 70,000 Ft (VRMS MIN)	150
Dielectric Withstanding Voltage (VRMS MIN) At Sea Level	500
Contact Resistance (Milliohms MAX)	
Center Contact	3.5
Outer Contact	2.8
RF High Potential At Sea Level (VRMS MIN @ 5 MHz)	375
I.R.(Megohms)	5,000

MECHANICAL	
Interface Dimensions Per OSMM OMNI-SPECTRA Catalog	
Recomm Mating Torque	2.0 In-Lbs
Mating Characteristics:	
Insertion (MAX Lbs)	3.0
Withdrawal (MIN Oz)	0.5
Force to Engage & Disengage (In-Lbs MAX)	
	1.0
Center Contact Captivation	
Axial (Lbs)	4.0
Radial (In-Oz)	2.0
Cable Retention	
Axial (Lbs)	N/A
Torque (In-Oz)	N/A
Weight (Grams)	0.66

ENVIRONMENTAL	
Temperature Rating -65 To 125°C	
Vibration - MIL-STD-202, Method 204, Condition D	
Shock - MIL-STD-202, Method 213, Condition I	
Thermal shock MIL-STD-202, Method 107 Test Condition B	
Moisture Resistance - MIL-STD-202, Method 106	
Corrosion - MIL-STD-202, Method 101, Condition B, 5% salt spray	

HOUSING CAP	MATERIAL	FINISH
STAINLESS STEEL PER ASTM-A484 AND ASTM-A582, TYPE 303	GOLD PLATE PER MIL-G-45204	
DIELECTRIC	TFE FLUOROCARBON PER ASTM-D-1457	N/A
CENTER CONTACT CONTACT EXT	BERYLLIUM COPPER PER ASTM B 196, ALLOY C17300, CONDITION H	GOLD PLATE PER MIL-G-45204
COMPONENT	MATERIAL	FINISH
UNLESS OTHERWISE SPECIFIED DIMENSIONS ARE IN INCHES TOLERANCE ON	DRAWN BY PRB DATE 2/21/68	AMP Incorporated 140 Fourth Avenue Waltham, MA 02451-7599
FRAC. DEC. ANGLES	CHECKED BY BW DATE 2/22/68	
± 1/64 ± .005 ± 1°	APPD BY BVC DATE 2/22/68	
These drawings and specifications are the property of Omni Spectra Incorporated and shall not be reproduced or copied or used in whole or in part as the basis for the manufacture or sale of item(s) without written permission.	USE ASS'Y PROCEDURE	TITLE OSMM RIGHT ANGLE JACK PRINTED CIRCUIT BOARD - STRAIGHT TERMINAL
	NO. AP. N/A	SIZE B CODE IDENT NO. 26805 4064-0000-00 REV 01
		SCALE 10:1 SHEET 1 OF 1

CUSTOMER DRAWING

AMP PART # 1044848-1
SHEET 1 OF 1 REV C

单击下面可查看定价，库存，交付和生命周期等信息

[>>TE Connectivity\(泰科\)](#)