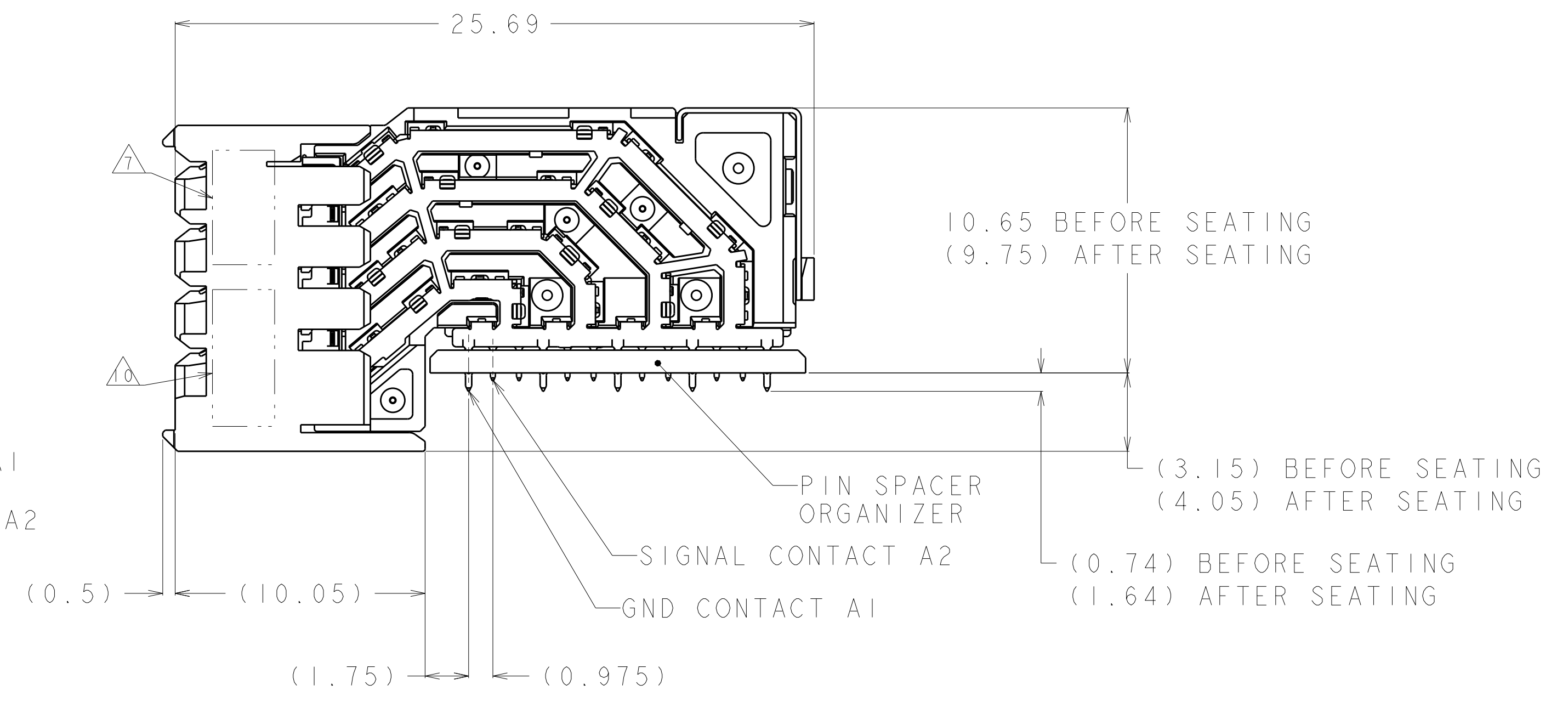
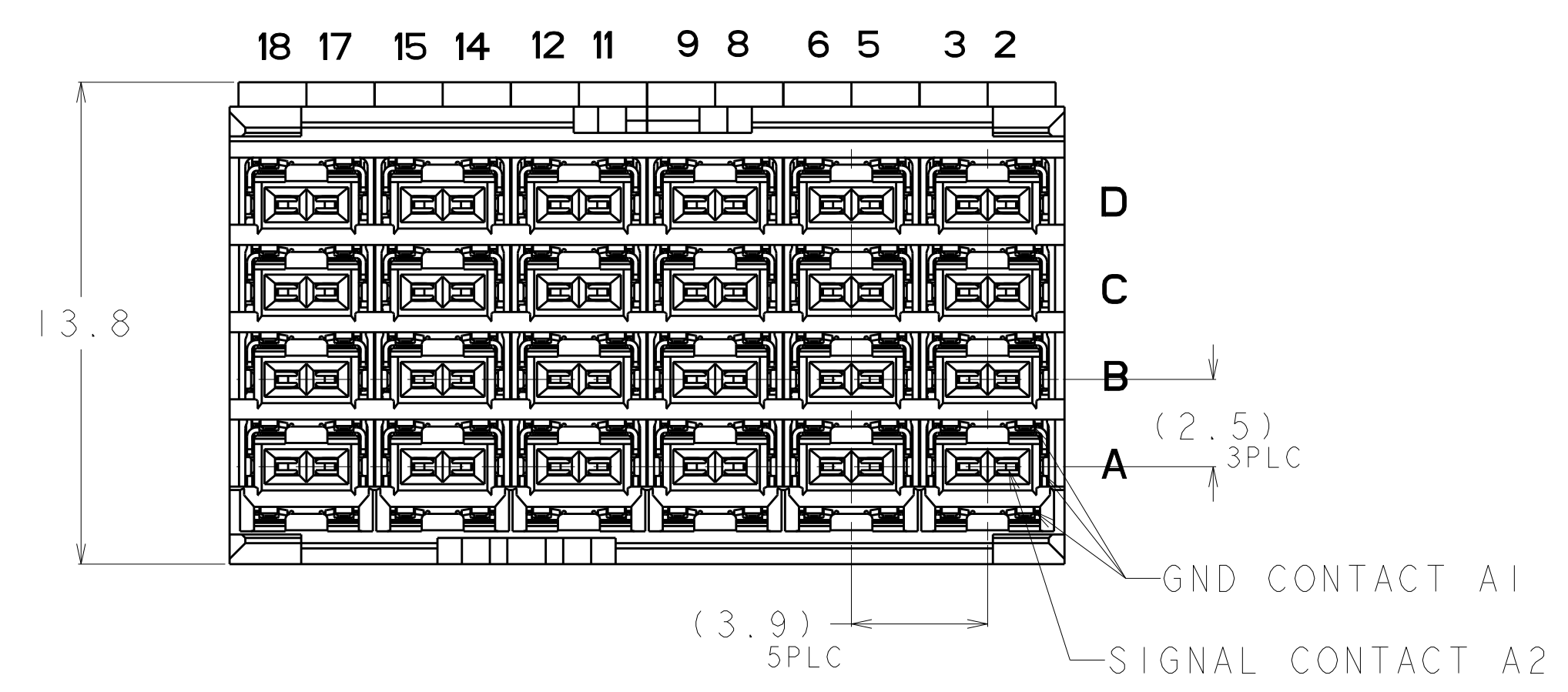
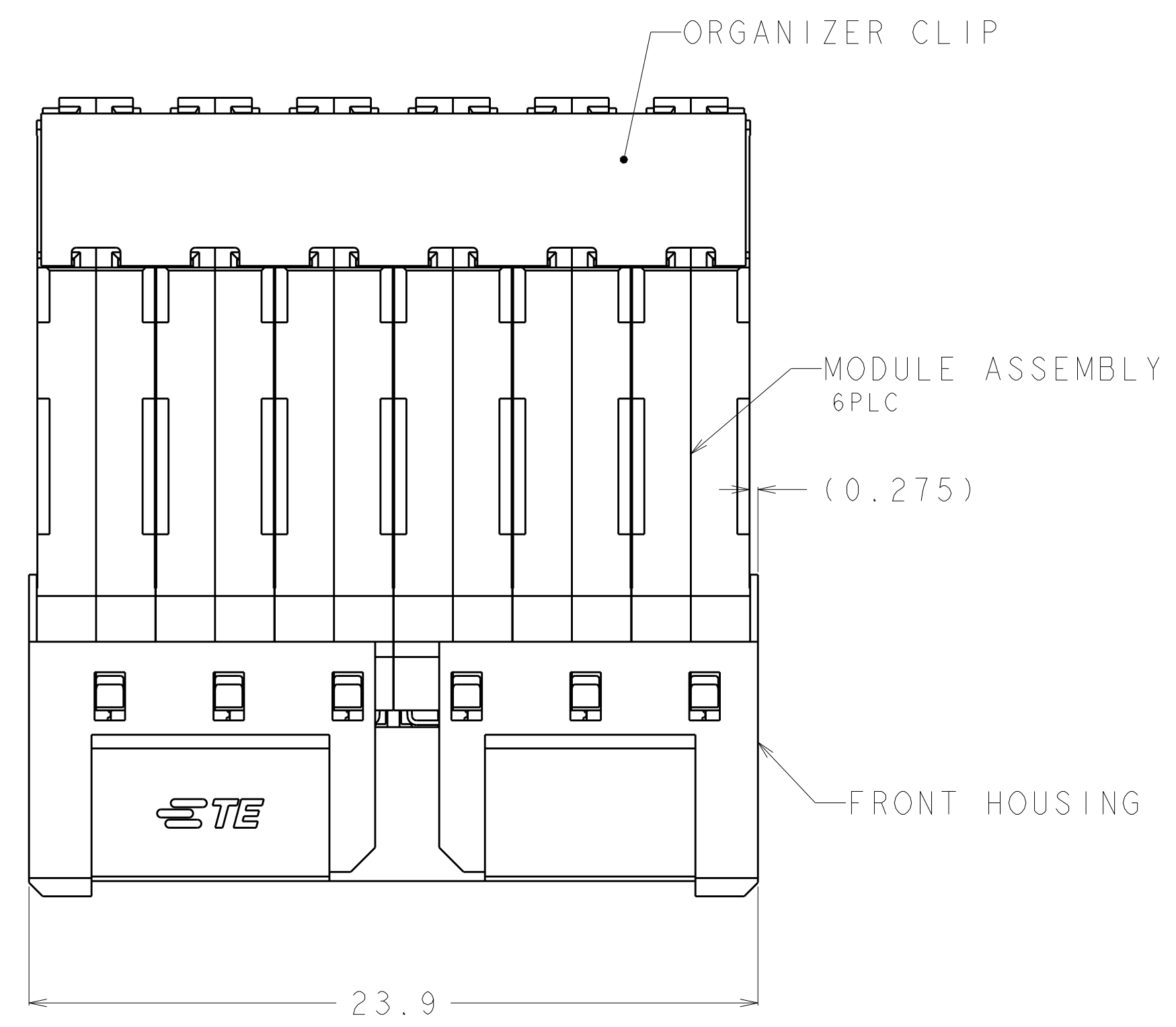


REVISIONS				
P.	LTN	DESCRIPTION	DATE	OWN APVD
A		RELEASED	16DEC2019	Y. K T. M
A1		REVISED	24DEC2019	Y. K T. M



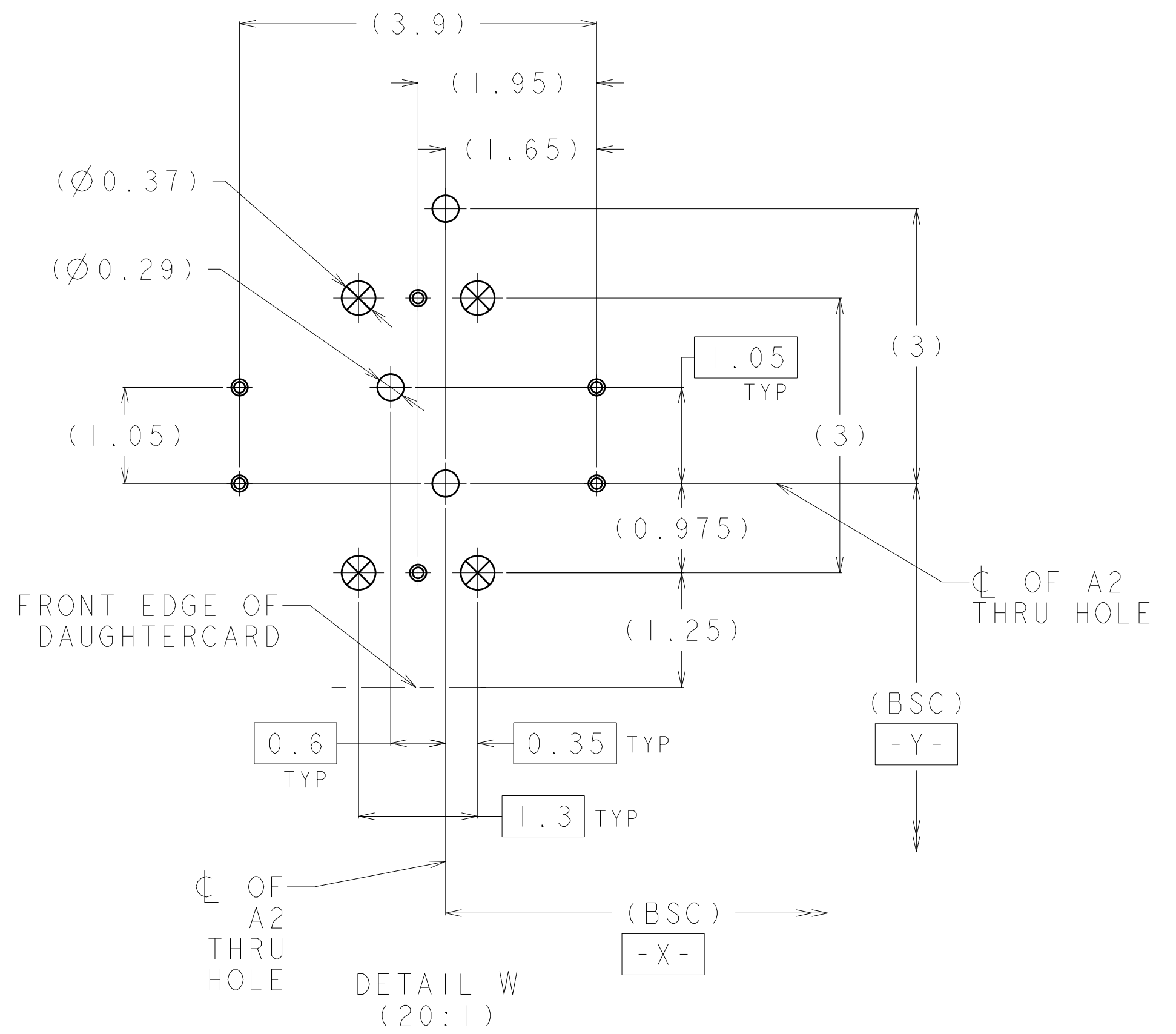
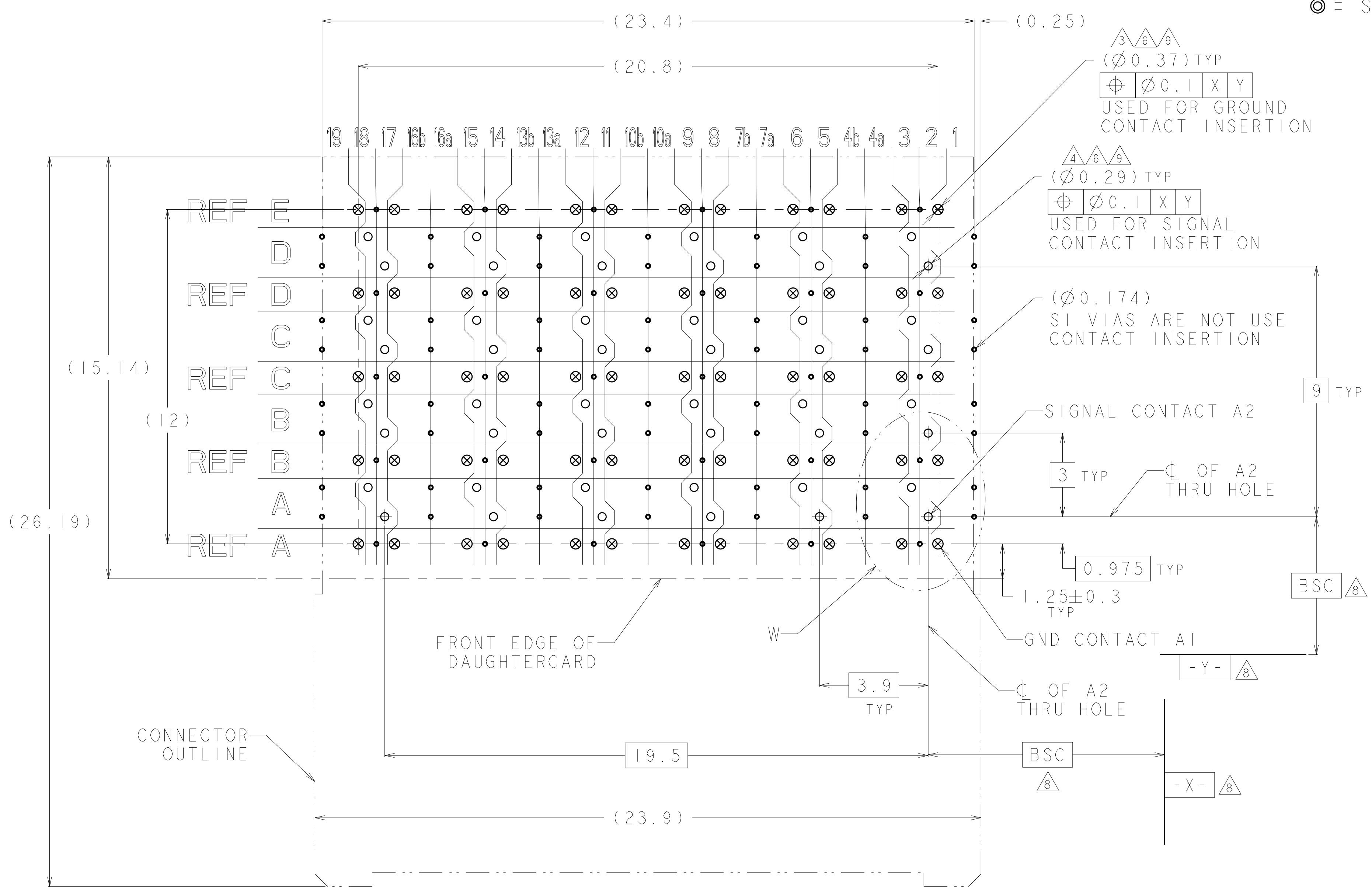
- △ CONTACTS AND SHIELDS - COPPER ALLOY
ORGANIZER - STAINLESS STEEL
HOUSING AND PIN SPACER - THERMOPLASTIC, UL 94V-0, BLACK
- △ FINISH:
CONFORMS TO THE REQUIREMENTS OF TE PRODUCT SPECIFICATION 108-140186
BASED ON TELCORDIA GR-1217-CORE FOR SYSTEM QUALITY LEVEL III,
APPLICATIONS IN CONTROLLED ENVIRONMENTS (CENTRAL OFFICE).
COMPLIANT PIN AREA : 0.5um MIN MATTE TIN.
- △ GROUND PLATED THRU HOLE REQUIREMENTS:
FINISHED HOLE = $\varnothing 0.37 \pm 0.05$
HOLE SIZE PRIOR TO PLATING = $\varnothing 0.450 \pm 0.025$
COPPER THICKNESS = 0.025 MIN
IMMERSION TIN IF APPLICABLE = (0.00095)
- △ SIGNAL PLATED THRU HOLE REQUIREMENTS:
FINISHED HOLE = $\varnothing 0.29 \pm 0.05$
HOLE SIZE PRIOR TO PLATING = $\varnothing 0.37 \pm 0.025$ (#79 DRILL)
COPPER THICKNESS = 0.025 MIN
IMMERSION TIN IF APPLICABLE = (0.00095)
- △ SI VIA PLATED THRU HOLE REQUIREMENTS:
FINISHED HOLE = AS REQUIRED
HOLE SIZE PRIOR TO PLATING = $\varnothing 0.254 \pm 0.025$
COPPER THICKNESS = 0.025 MIN
IMMERSION TIN IF APPLICABLE = (0.00095)
- △ SIGNAL HOLES AND SI VIAS:
PTH DIMMENSIONS APPLY TO THE TOP 1.00mm OF THE PCB THICKNESS FROM THE
CONNECTOR MOUNTING SIDE.
GROUND HOLES:
PTH DIMMENSIONS APPLY TO THE TOP 1.25mm OF THE PCB THICKNESS FROM THE
CONNECTOR MOUNTING SIDE.
- △ CONNECTOR MARKED WITH PART NUMBER, DATE CODE, AND "92 OHM" IN
APPROXIMATE AREA SHOWN.
- △ DATUMS AND BASIC DIMENSIONS ESTABLISHED BY CUSTOMER
- △ APPLIES TO FINISHED HOLE DIAMETER
- △ DATAMATRIX BARCODE MARKING IN THIS AREA.

2356429-1
PART NO

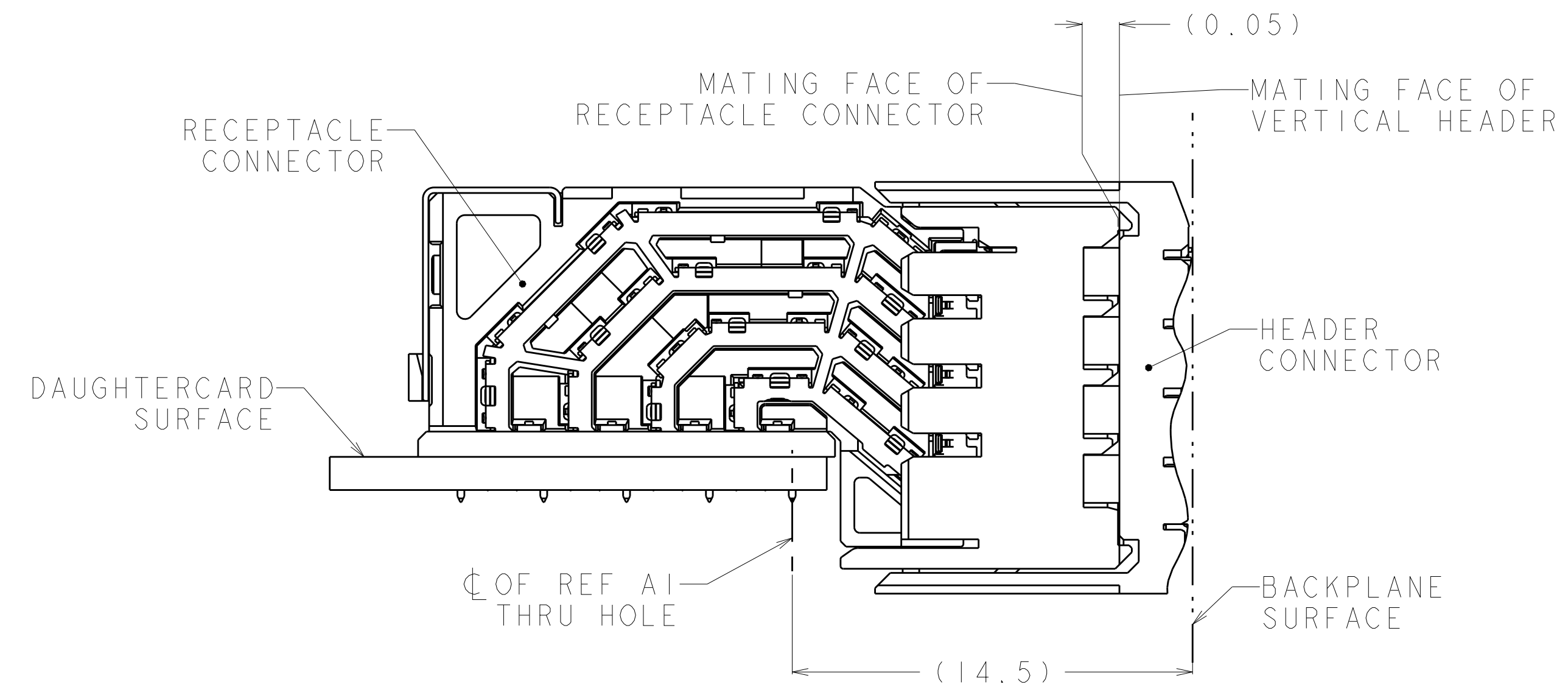
THIS DRAWING IS A CONTROLLED DOCUMENT.		OWN Y. KODAIRA 13MAY2019	TE Connectivity													
DIMENSIONS: mm		CHK M. IWASAKI 13MAY2019	NAME RIGHT ANGLE RECEPTACLE ASSEMBLY 4 PAIR 6 COLUMN, 92 OHM, PAIR-IN-ROW, STRADA WHISPER R													
TOLERANCES UNLESS OTHERWISE SPECIFIED:		APVD T. MATSUDAIRA 13MAY2019	PRODUCT SPEC 108-140186													
<table border="1"> <tr><td>0 PLC</td><td>±0.3</td></tr> <tr><td>1 PLC</td><td>±0.3</td></tr> <tr><td>2 PLC</td><td>±0.3</td></tr> <tr><td>3 PLC</td><td>±0.3</td></tr> <tr><td>4 PLC</td><td>±0.3</td></tr> <tr><td>5 PLC</td><td>±0.3</td></tr> </table>		0 PLC	±0.3	1 PLC	±0.3	2 PLC	±0.3	3 PLC	±0.3	4 PLC	±0.3	5 PLC	±0.3	APPLICATION SPEC 114-32029	RESTRICTED TO	
0 PLC	±0.3															
1 PLC	±0.3															
2 PLC	±0.3															
3 PLC	±0.3															
4 PLC	±0.3															
5 PLC	±0.3															
MATERIAL		WEIGHT	SIZE A100779	DRAWING NO C=2356429												
FINISH		CUSTOMER DRAWING	SCALE 6:1	SHEET 1 OF 2												

REVISIONS				
P.	LTN	DESCRIPTION	DATE	APVD
		SEE SHEET 1		

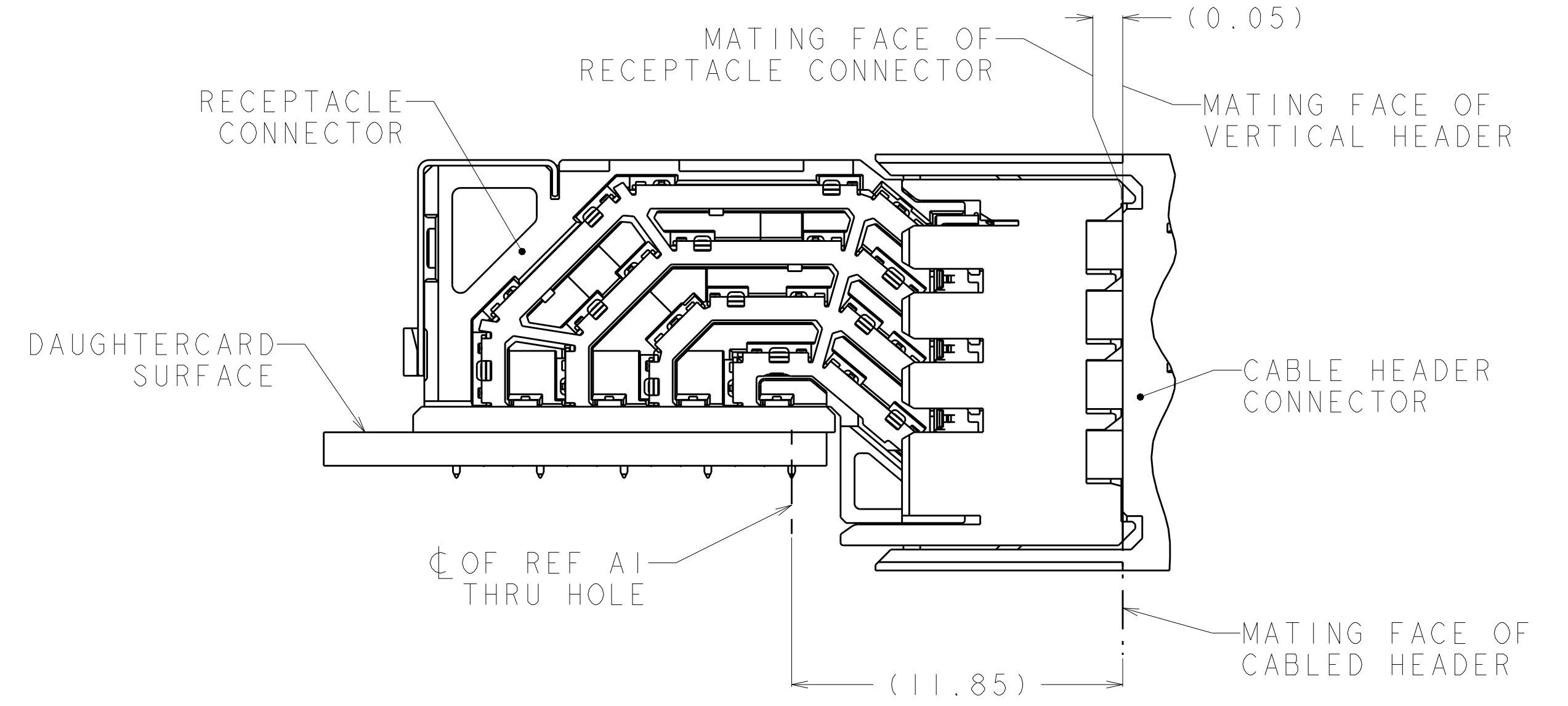
- = SIGNAL
- ⊗ = GROUND
- ⊙ = SIGNAL INTEGRITY VIA TO GROUND



RECOMMENDED PCB LAYOUT
 COMPONENT SIDE SHOWN
 SCALE 10:1



MIDPLANE APPLICATIONS
 MATED ASSEMBLY (PARTIAL VIEW)



CABLED HEADER APPLICATIONS
 MATED ASSEMBLY (PARTIAL VIEW)

THIS DRAWING IS A CONTROLLED DOCUMENT.		CHK	TE Connectivity	
DIMENSIONS:		APVD	NAME	
mm	0 PLC ±0.3 1 PLC ±0.3 2 PLC ±0.3 3 PLC ±0.3 4 PLC ±0.3	PRODUCT SPEC	RIGHT ANGLE RECEPTACLE ASSEMBLY 4 PAIR 6 COLUMN, 92 OHM, PAIR-IN-ROW, STRADA WHISPER R	
MATERIAL		APPLICATION SPEC	SIZE	RESTRICTED TO
FINISH		WEIGHT	A1 0079 C=2356429	-
		CUSTOMER DRAWING	SCALE 4:1	SHEET 2 OF 2 REV A1

单击下面可查看定价，库存，交付和生命周期等信息

[>>TE Connectivity\(泰科\)](#)