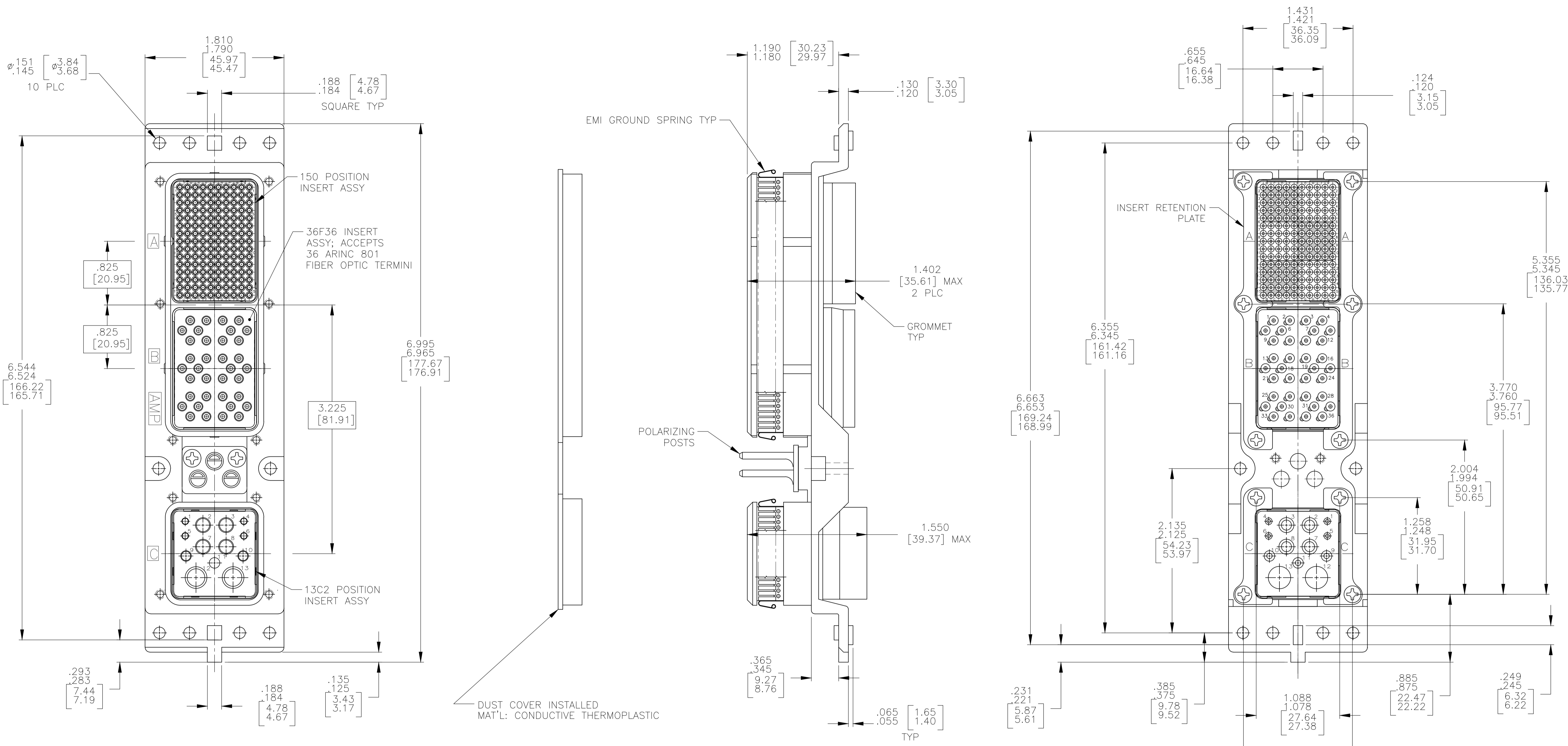


REVISIONS					
P	LTR	DESCRIPTION	DATE	DMN	APVD
N	REVISED PER	ECO-17-015513	19DEC2017	PHM	CT



DUST COVER INSTALLED
MAT'L: CONDUCTIVE THERMOPLASTIC

KEYING POSITION	CONTACTS & FILLER PLUGS INCLUDED AND NOT INSTALLED	PART NUMBER
-	MODULE A 208262-3; SZ 22 PIN CONTACT (QTY=150) MODULE C 208267-2; SZ 20 SOCKET CONTACT (QTY=4) 208270-2; SZ 16 SOCKET CONTACT (QTY=3) 208273-2; SZ 12 SOCKET CONTACT (QTY=4) 1484225-1 SZ 5 FILLER PLUG (QTY=2)	1757543-4 \triangle_6
-	MODULE A 208262-3; SZ 22 PIN CONTACT (QTY=150) MODULE C 208267-2; SZ 20 SOCKET CONTACT (QTY=4) 208270-2; SZ 16 SOCKET CONTACT (QTY=3) 208273-2; SZ 12 SOCKET CONTACT (QTY=4) 1484225-1 SZ 5 FILLER PLUG (QTY=2)	1757543-3 \triangle_6
-	MODULE A 208262-3; SZ 22 PIN CONTACT (QTY=150) MODULE C 208267-2; SZ 20 SOCKET CONTACT (QTY=4) 208270-2; SZ 16 SOCKET CONTACT (QTY=3) 208273-2; SZ 12 SOCKET CONTACT (QTY=4) 1484225-1 SZ 5 FILLER PLUG (QTY=2)	1757543-2 \triangle_6 \triangle_7
-	MODULE A 208262-3; SZ 22 PIN CONTACT (QTY=150) MODULE C 208267-2; SZ 20 SOCKET CONTACT (QTY=4) 208270-2; SZ 16 SOCKET CONTACT (QTY=3) 208273-2; SZ 12 SOCKET CONTACT (QTY=4) 1484225-1 SZ 5 FILLER PLUG (QTY=2)	1757543-1 \triangle_6 \triangle_7
36F36 FINISH	36F36 MATERIAL	KEYING POSITION

- CONNECTOR DIMENSIONS ARE PER ARINC 600 SPECIFICATION.
 - CONNECTOR IS SUPPLIED WITH CONTACTS (PER TABLE) NOT ASSEMBLED.
 - KEYING SHOWN IN POSITION "01" FOR ILLUSTRATION ONLY. CONNECTORS SHIPPED WITH KEYING INSTALLED IN POSITION PER TABLE. FOR POSITION "00" KEYING HARDWARE SHIPPED UNASSEMBLED.
 - MODULE B (36F36) IS SUPPLIED WITHOUT CONTACTS. MUST BE ORDERED SEPARATELY.
 - CONNECTOR IS SUPPLIED WITH A DUST COVER INSTALLED
- \triangle_6 1757543-1, -2, -3 & -4 ARE NOT RoHS COMPLIANT.
 \triangle_7 1757543-1, -2 ARE OBSOLETE AND SUPERSEDED BY 1757543-3.

COMPONENT	MATERIAL	FINISH
SHELL	DIE CAST ALUMINUM PER ASTM-B-85	ELECTROLESS NICKEL PER MIL-C-26074
INSERT RETENTION PLATES	ALUMINUM ALLOY PER ASTM-B-209	ELECTROLESS NICKEL PER MIL-C-26074
SCREWS	STAINLESS STEEL	PASSIVATED
POLARIZING POST	ZINC ALLOY PER ASTM-B-86	-
150 & 13C2 INSERTS	THERMOSET OR THERMOPLASTIC PPS PER MIL-M-24519	-
POLARIZING POST RETAINING PLATE	ALUMINUM ALLOY PER ASTM-B-209	BLUE ANODIZED PER MIL-A-8625
36F36 INSERT	SEE TABLE	SEE TABLE
EMI GROUND SPRING	BERYLLIUM COPPER 172 (ALLOY 29)	ELECTRODEPOSITED NICKEL PER AMS-QQ-N-290

THIS DRAWING IS A CONTROLLED DOCUMENT.

DIMENSIONS: INCHES	TOLERANCES UNLESS OTHERWISE SPECIFIED:	APVD: S. GLATFELTER	NAME: PLUG ASSY, SIZE 2, ARINC 600 (150/36F36/13C2)
0 PLC ± .005	1 PLC ± .005	12-1-04	SIZE: A1
2 PLC ± .005	3 PLC ± .005	12-2-04	CAGE CODE: 00779
4 PLC ± .005	ANGLES ± .005	PRODUCT SPEC	DRAWING NO: 1757543
MATERIAL: SEE TABLE	FINISH: SEE TABLE	APPLICATION SPEC	RESTRICTED TO: -
CUSTOMER DRAWING		WEIGHT: -	SCALE: 3:2
		SHEET: 1 OF 1	REV: N

单击下面可查看定价，库存，交付和生命周期等信息

[>>TE Connectivity\(泰科\)](#)