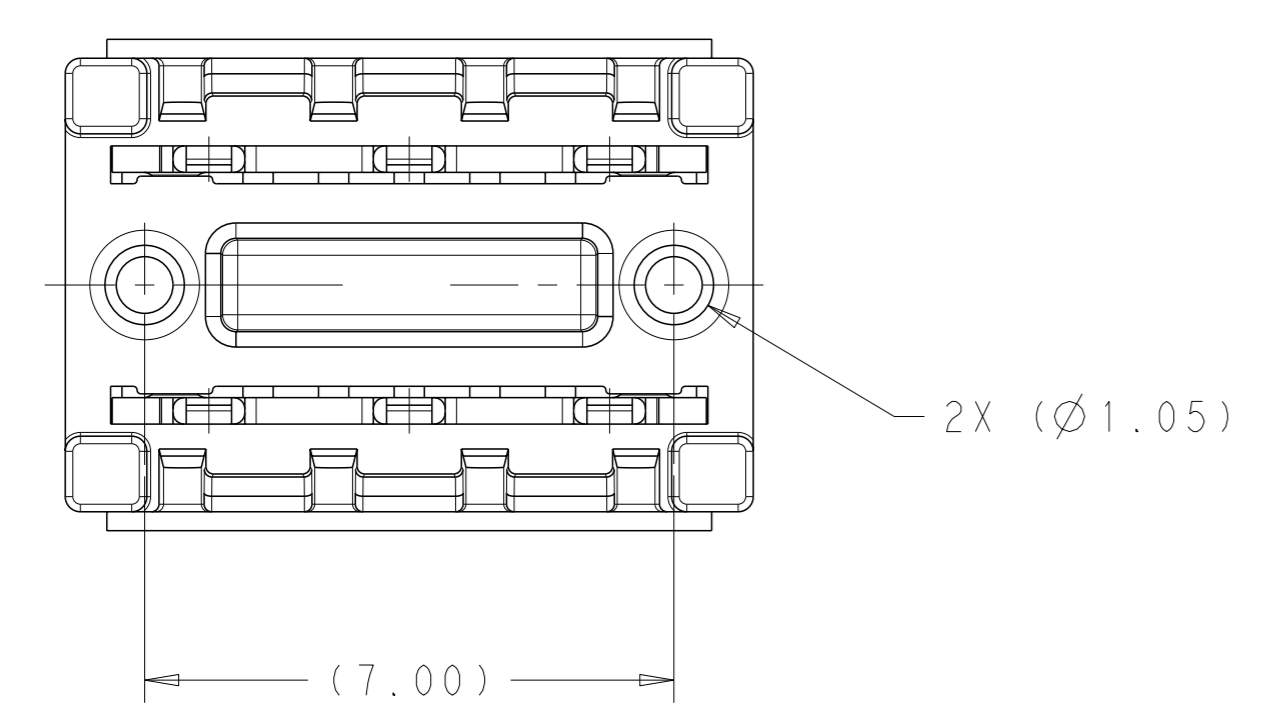
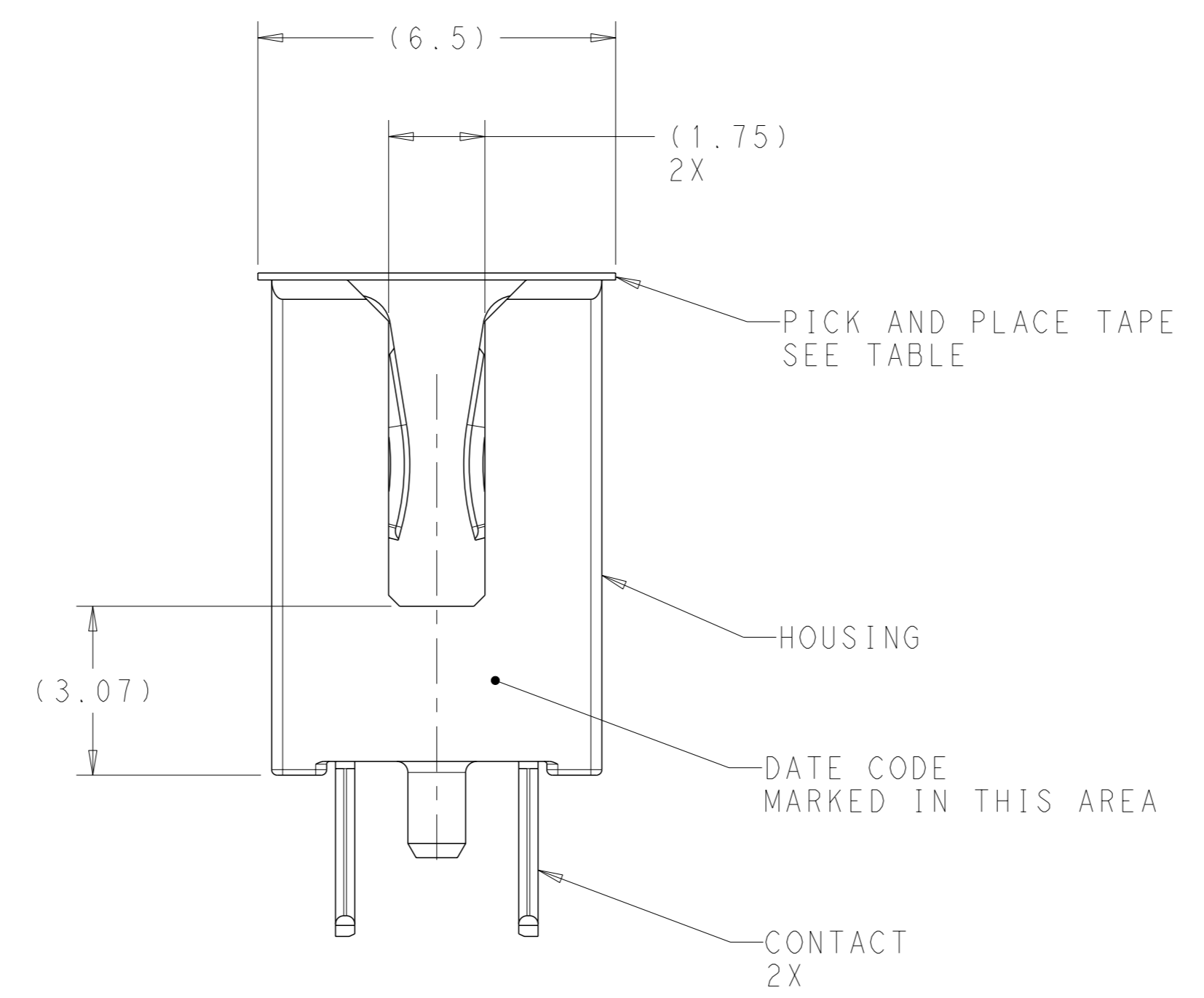
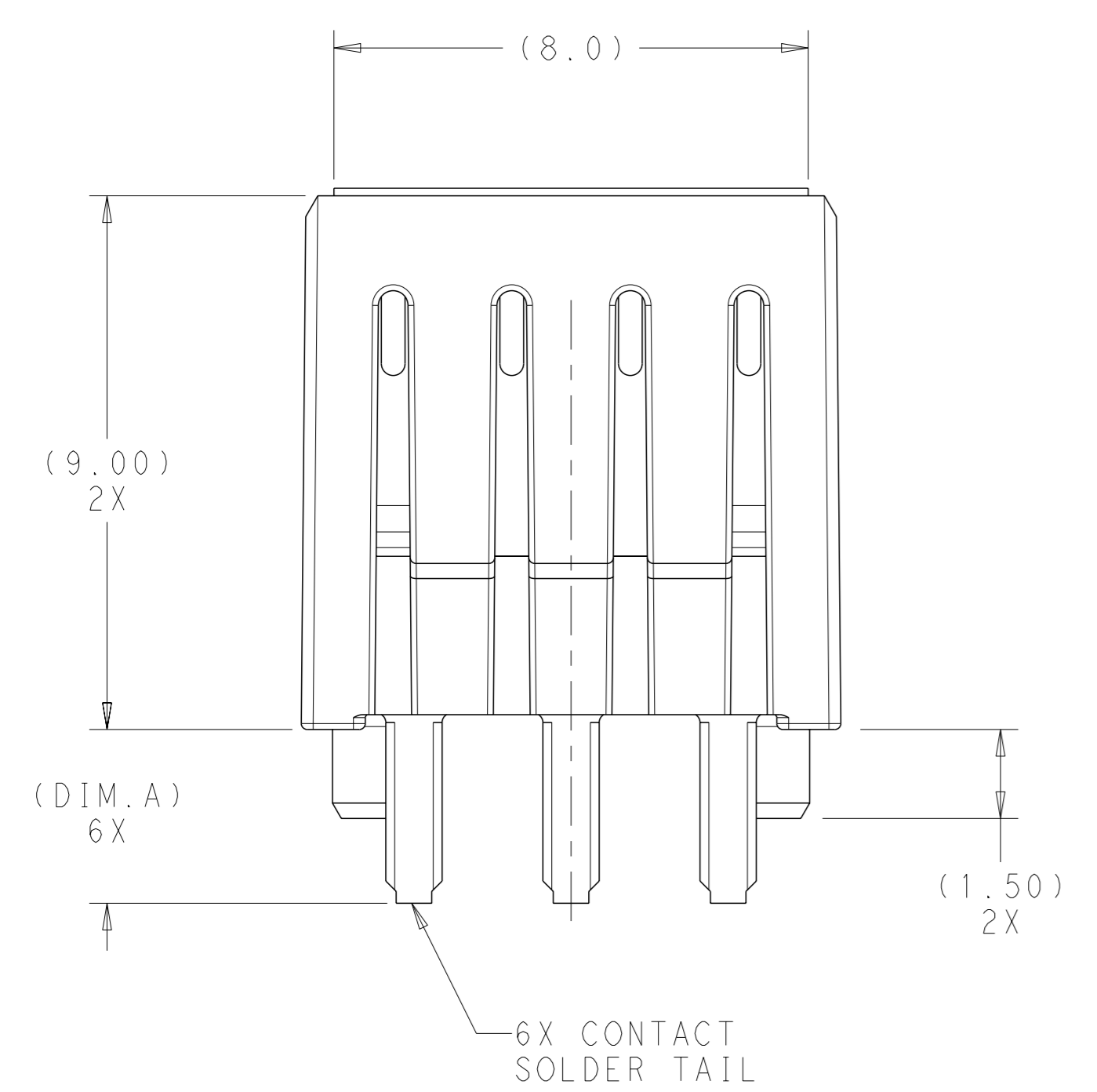
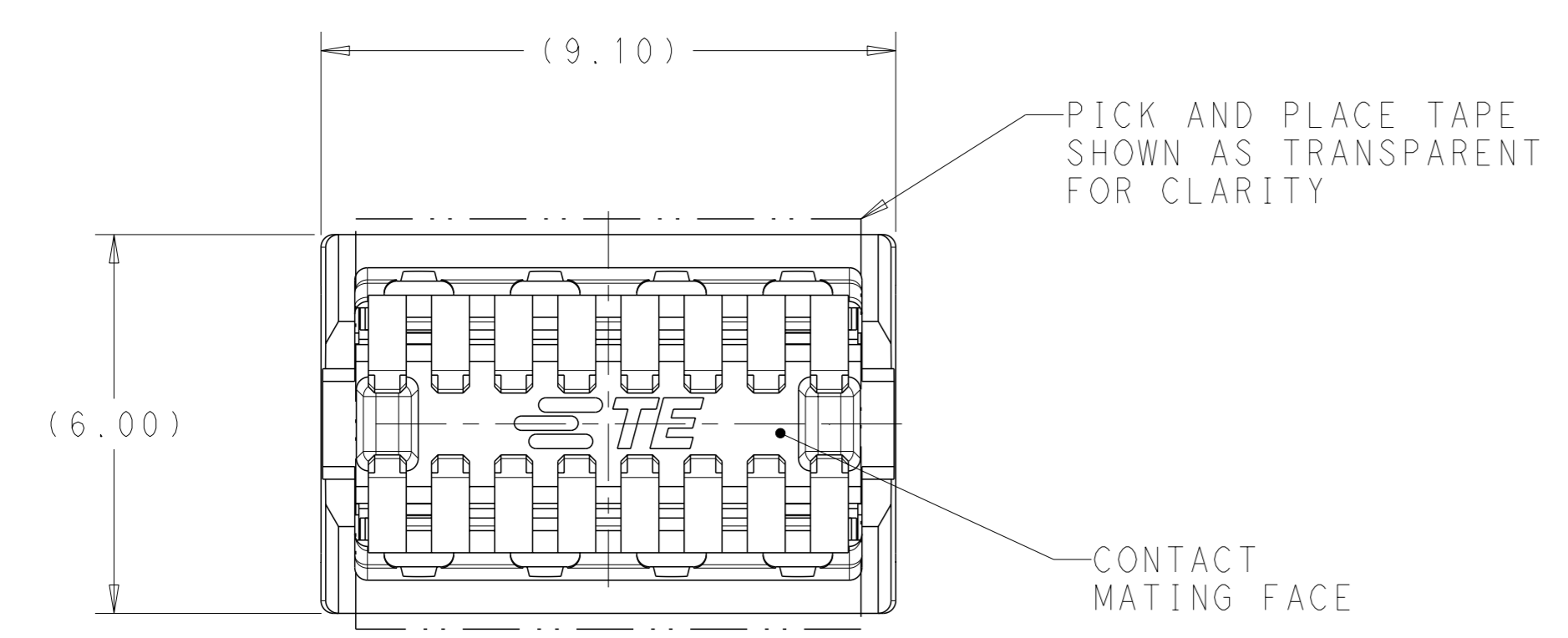


REVISIONS				
#	DATE	DESCRIPTION	OWN	APVD
B	29NOV2019	REVISED PER ECO-19-018158	AP	RP
C	05MAY2020	REVISED PER ECO-20-005713	AP	AH
E	28DEC2020	REVISED PER ECO-20-017965	TX	DZ
F	28OCT2021	REVISED PER ECN-21-123958	TM	DZ



- 1 HOUSING - LCP, BLACK, CONTACTS - COPPER ALLOY, PICK AND PLACE TAPE - POLYIMIDE FILM.
- 2 CONFORMS TO THE REQUIREMENTS OF TE PRODUCT SPECIFICATION 108-130028 BASED ON TELCORDIA GR-1217-CORE FOR SYSTEM QUALITY LEVEL III, APPLICATIONS IN CONTROLLED ENVIRONMENTS (CENTRAL OFFICE). REFERENCE: CONTACT MATE AREAS PLATED 0.38um MIN GOLD OR 0.03um MIN GOLD OVER 0.30um MIN PALLADIUM NICKEL, SOLDER TAILS PLATED MATTE-TIN.
- 3 DATUMS AND BASIC DIMENSIONS ESTABLISHED BY CUSTOMER.
- 4. MINIMUM HOST PCB THICKNESS: 1.5.
- 5 SEE MSA SPECIFICATION SFF-1002 FOR ADDITIONAL PADDLE CARD LAYOUTS COMPATIBLE WITH THIS RECEPTACLE AND FOR OPTIONAL SPLIT CONTACT PAD LAYOUTS FOR THE PADDLE CARD. SPECIFICATION PINOUT MAY ALSO DESIGNATE PAD SEQUENCE DIFFERENT FROM ILLUSTRATION.
- 6 CONFORMS TO THE REQUIREMENTS OF TE PRODUCT SPECIFICATION 108-130028 BASED ON TELCORDIA GR-1217-CORE FOR SYSTEM QUALITY LEVEL III, APPLICATIONS IN CONTROLLED ENVIRONMENTS (CENTRAL OFFICE). REFERENCE: CONTACT MATE AREAS PLATED 0.76um MIN GOLD, SOLDER TAILS PLATED MATTE-TIN.

1.73	2	YES	2344604-5
2.93	6	YES	2344604-4
2.93	6	NO	2344604-3
2.93	2	YES	2344604-2
2.93	2	NO	2344604-1
DIM.A	FINISH	PICK AND PLACE TAPE	PART NO

THIS DRAWING IS A CONTROLLED DOCUMENT. **STC** TE Connectivity

DIMENSIONS: mm  
 TOLERANCES UNLESS OTHERWISE SPECIFIED:  
 0 PLC ±  
 1 PLC ±0.2  
 2 PLC ±0.2  
 3 PLC ±  
 4 PLC ±  
 ANGLES FINISH ±

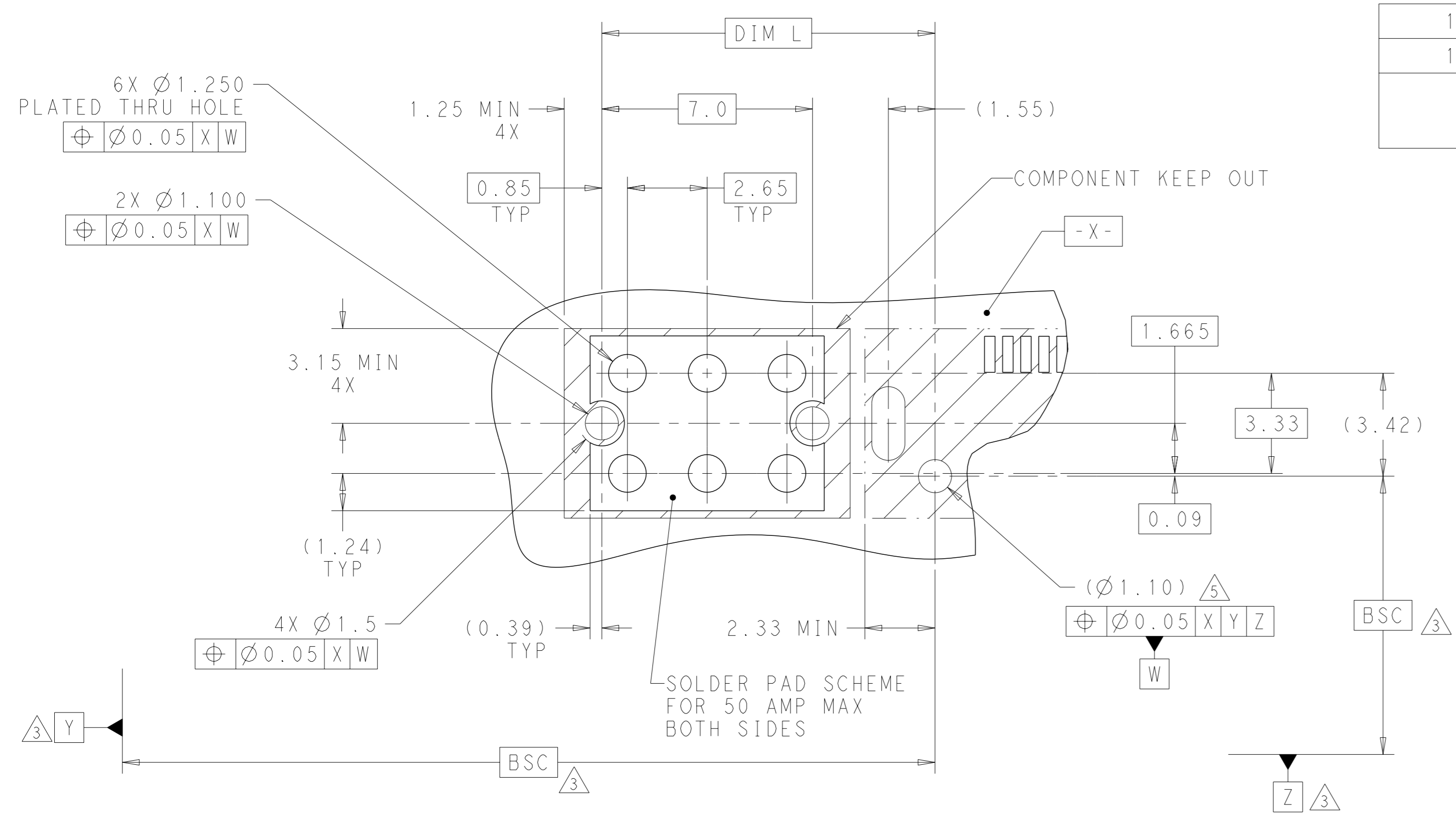
MATERIAL: 1  
 FINISH: 2  
 CUSTOMER DRAWING

DWN: J. McCLINTON 01OCT2018  
 CHK: HOWARD ANDREWS 01OCT2018  
 APVD: HOWARD ANDREWS 01OCT2018  
 NAME: RECEPTACLE ASSEMBLY, POWER  
 PRODUCT SPEC: -  
 APPLICATION SPEC: -  
 SIZE: A1  
 CAGE CODE: 00779  
 DRAWING NO: 2344604  
 SCALE: 10:1  
 SHEET: 1 OF 3  
 REV: F

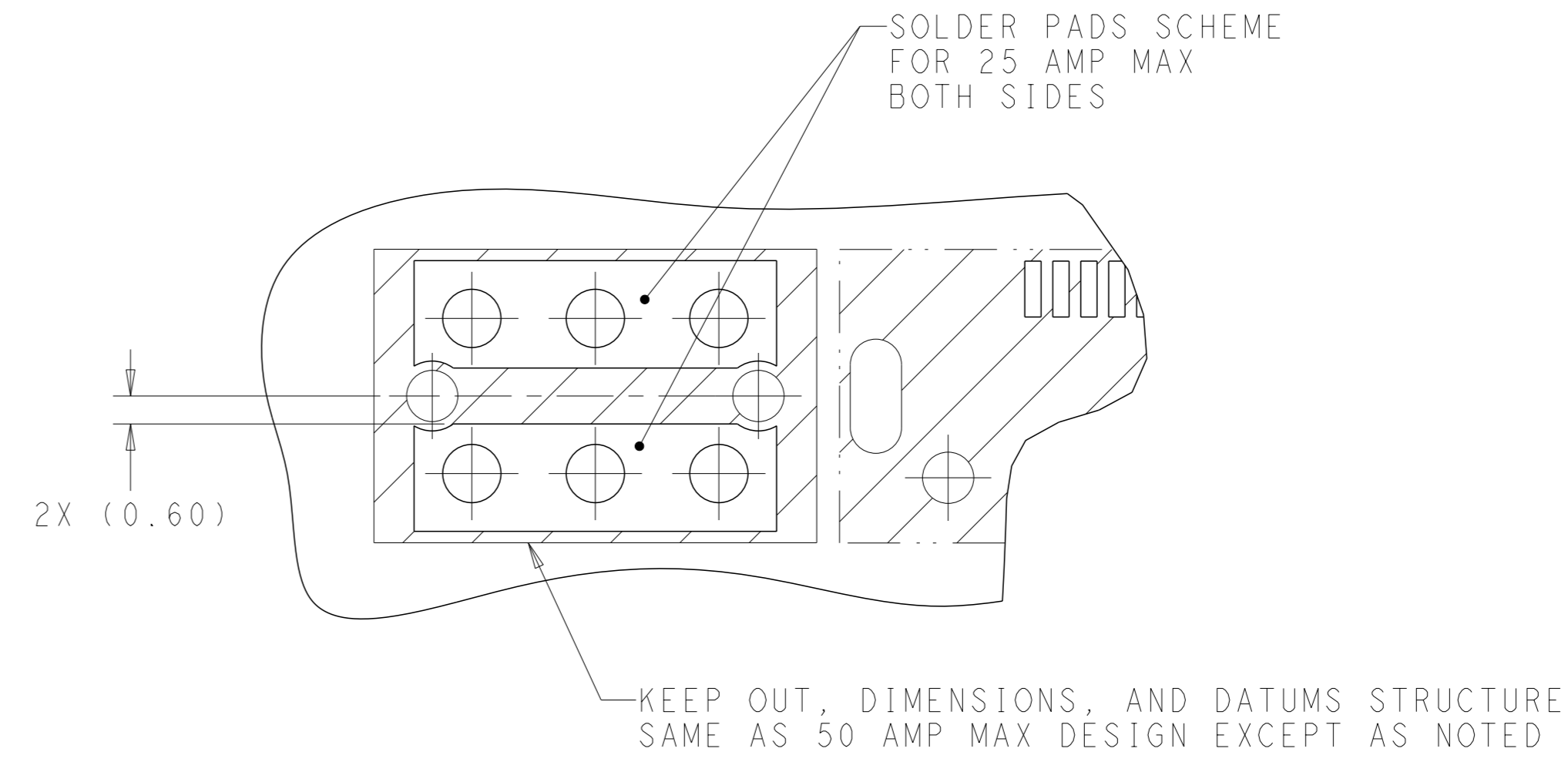
Printed on 10 Nov 2021 14:55 (incl. Standard Time) from TE45192

REVISIONS				
#	DATE	DESCRIPTION	OWN	APVD
-	-	SEE SHEET 1	-	-

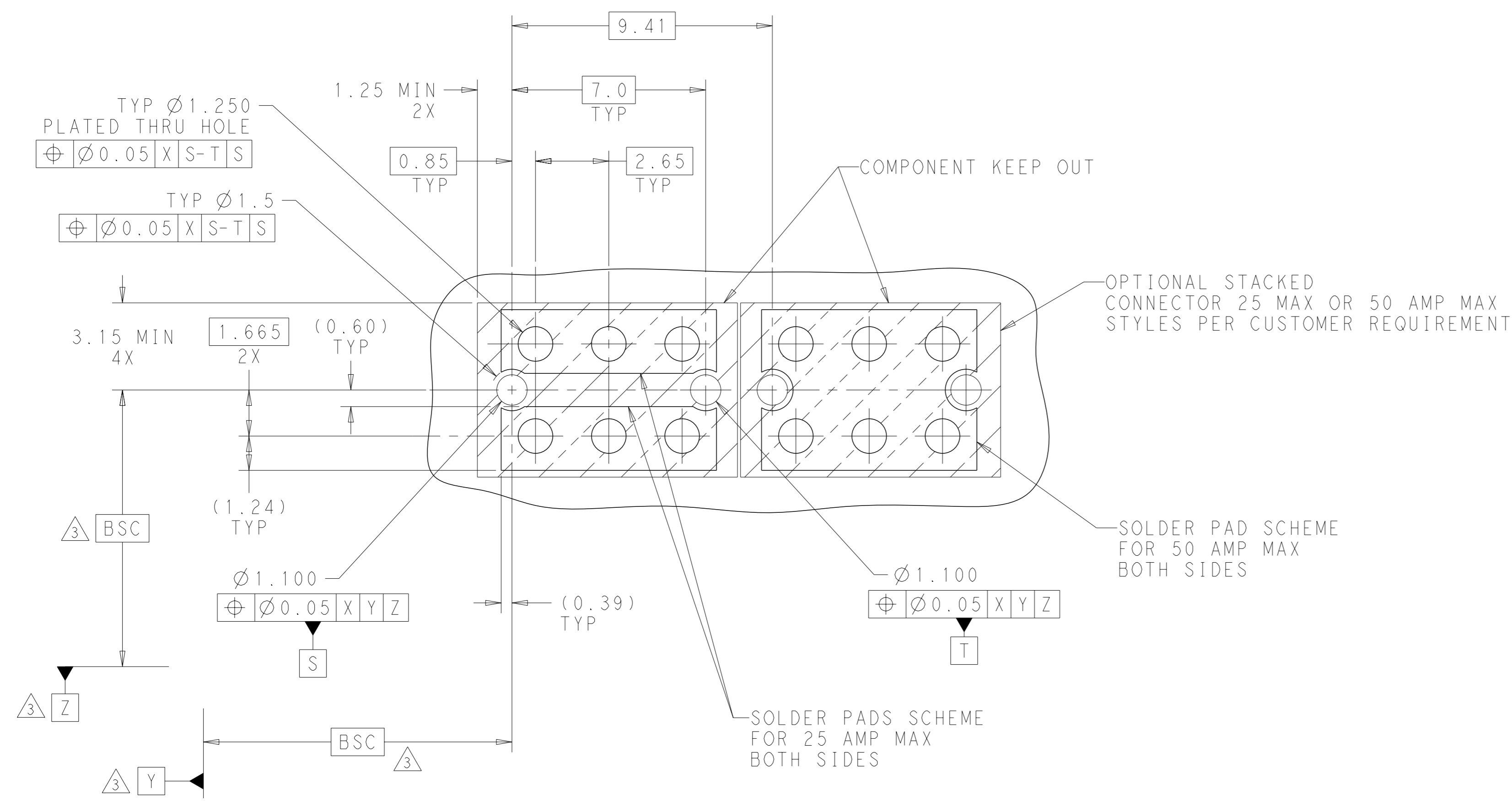
12.07	48V
11.07	12V
DIM L	VOLTAGE RATING



RECOMMENDED PCB LAYOUT AND KEEP OUT AREA PER SFF 1002



RECOMMENDED PCB LAYOUT AND KEEP OUT AREA PER SFF 1002

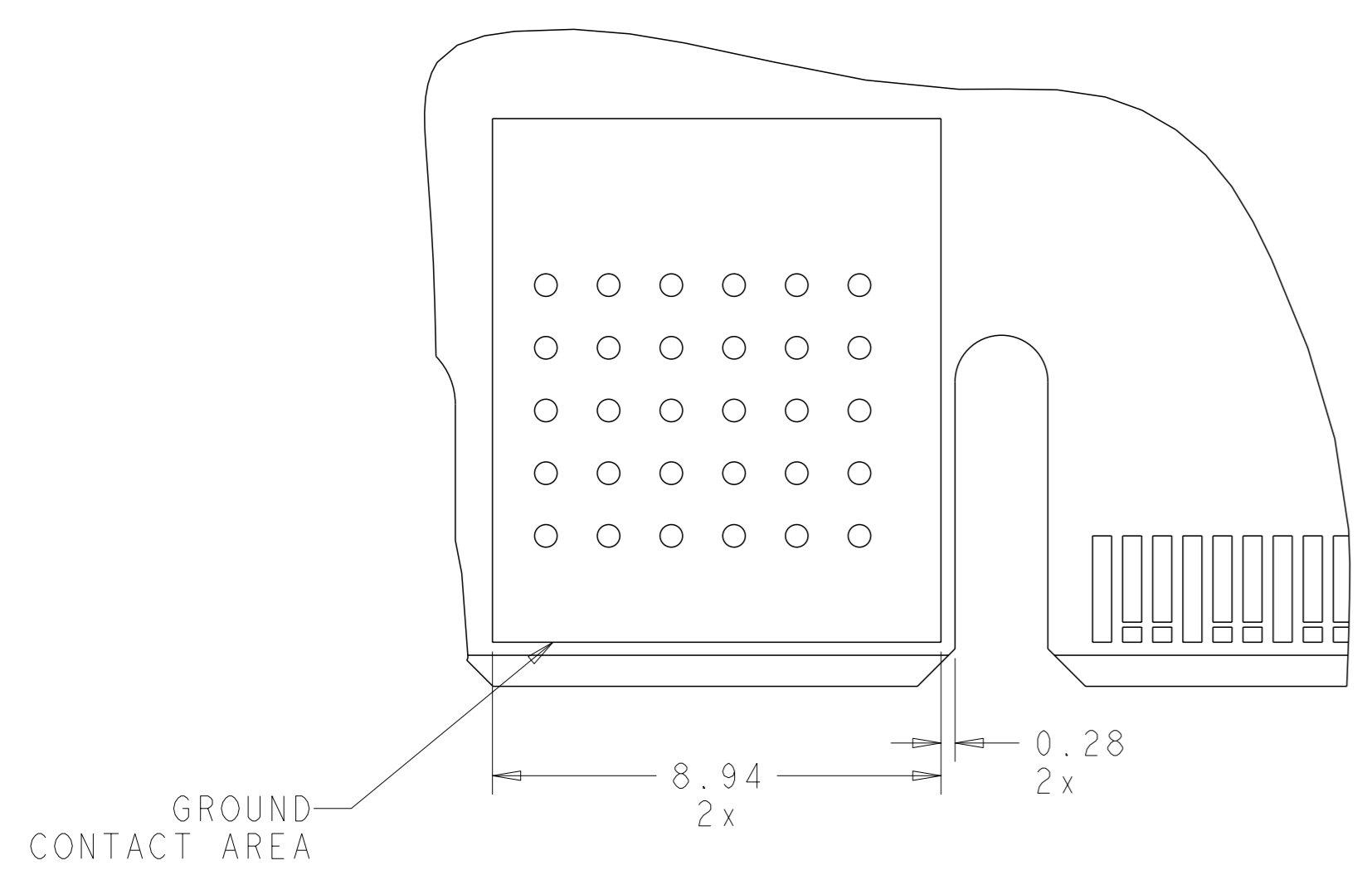


RECOMMENDED PCB LAYOUT AND KEEP OUT AREA FOR SINGLE OR STACKED CONNECTORS

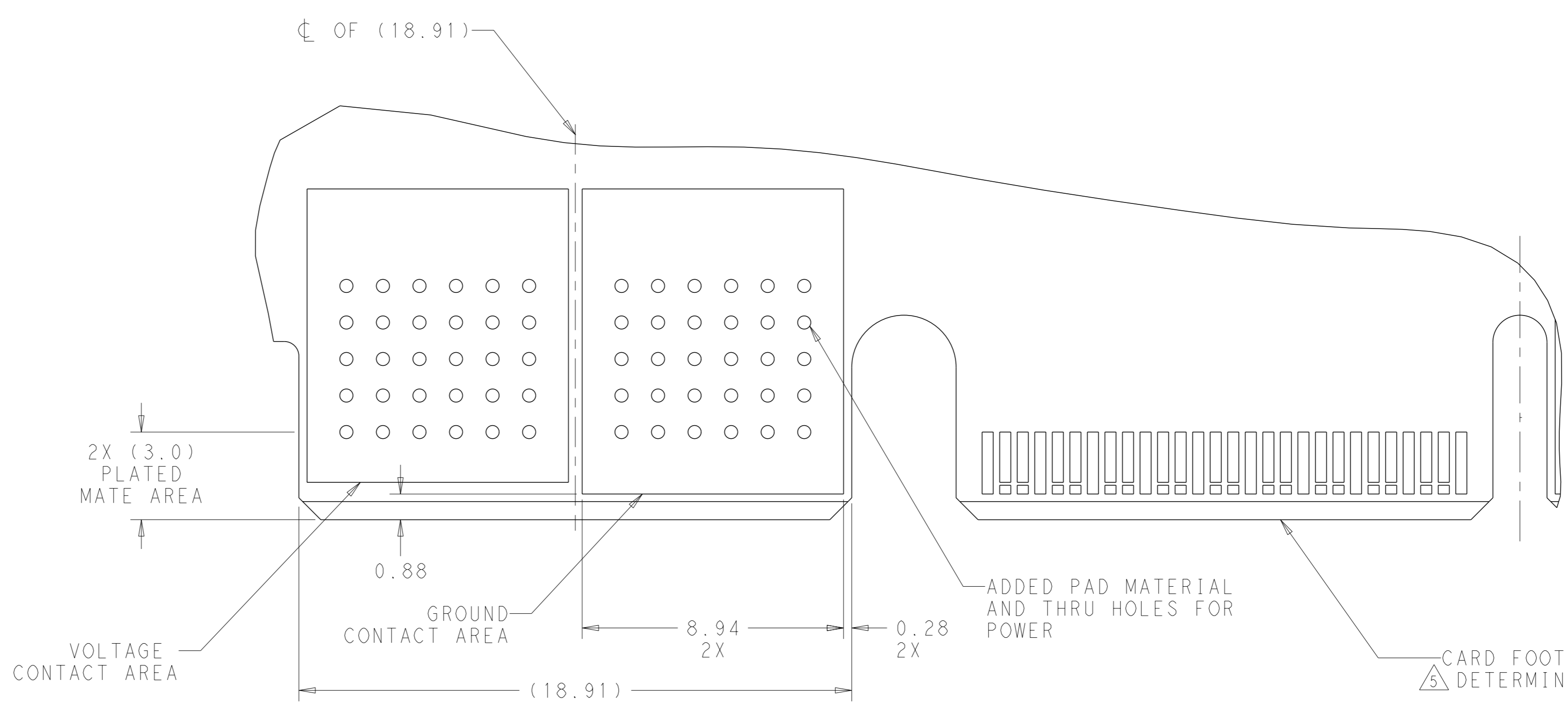
THIS DRAWING IS A CONTROLLED DOCUMENT.		OWN: J. McCLINTON 01OCT2018	
DIMENSIONS: mm		CHK: HOWARD ANDREWS 01OCT2018	
TOLERANCES UNLESS OTHERWISE SPECIFIED:		APVD: HOWARD ANDREWS 01OCT2018	NAME: RECEPTACLE ASSEMBLY, POWER
0 PLC ±	1 PLC ±0.2	PRODUCT SPEC	SIZE: A1
2 PLC ±0.2	3 PLC ±	APPLICATION SPEC	CAGE CODE: 2344604
4 PLC ±	ANGLES ±*	WEIGHT	RESTRICTED TO
MATERIAL	FINISH	CUSTOMER DRAWING	SCALE: 5:1
		SHEET 2 OF 3	
		REV F	

Printed on 10 Nov 2021 14:59 (in a Standard Time) from 1E45192

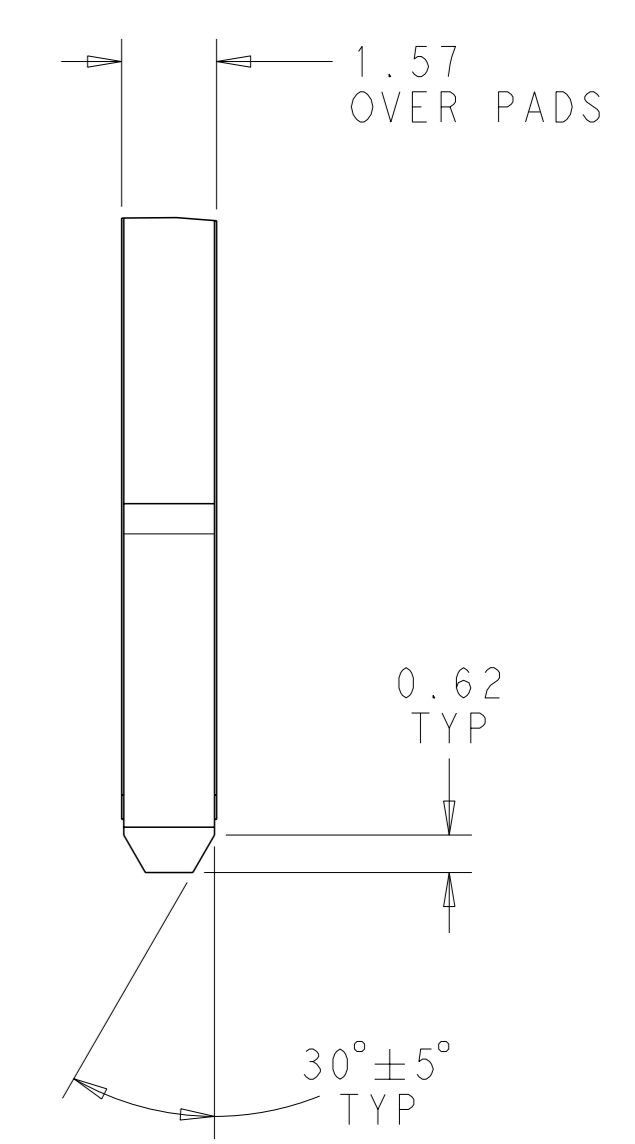
REVISIONS				
P	LY#	DESCRIPTION	DATE	APPD
-	-	SEE SHEET 1	-	-



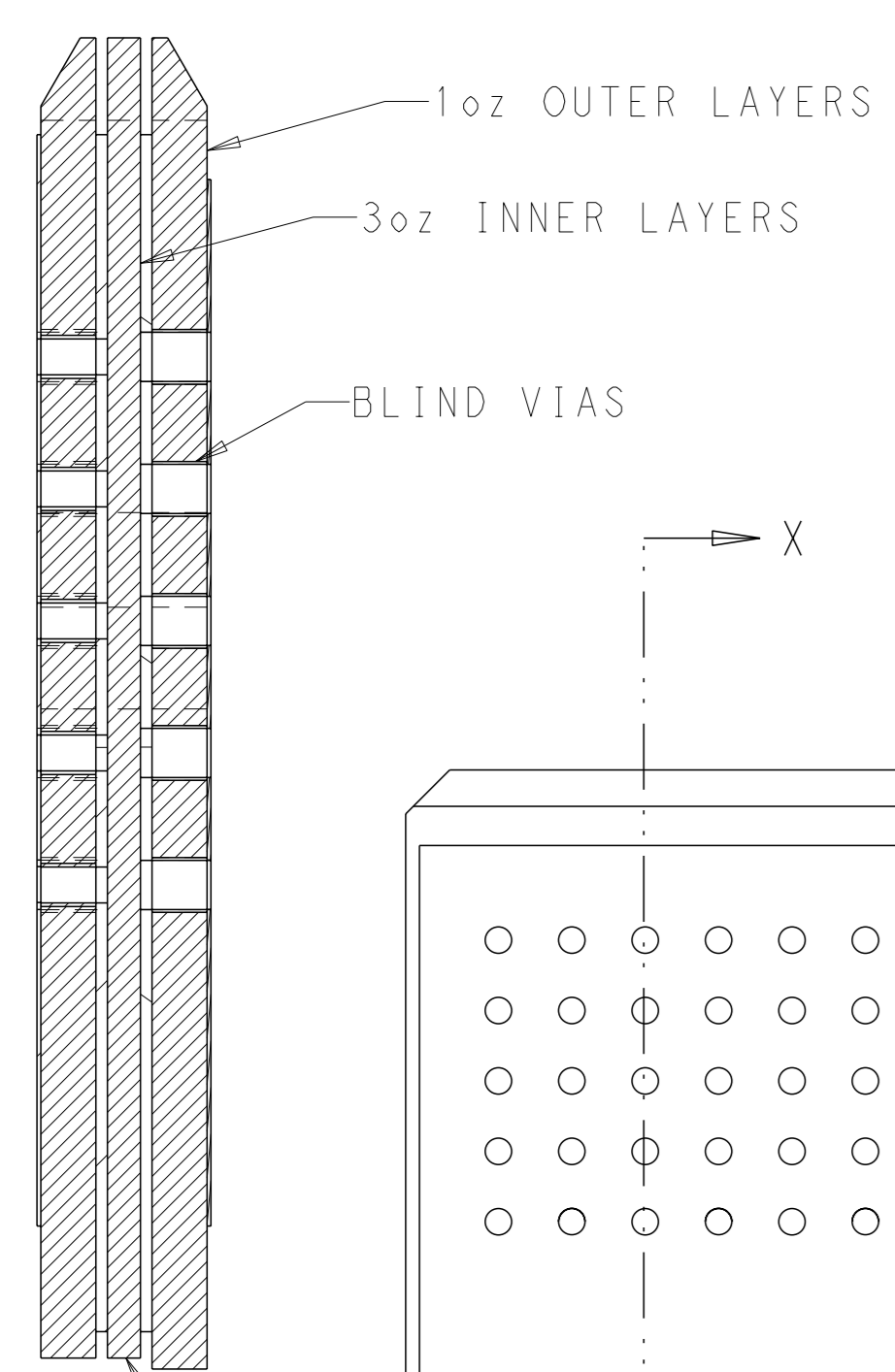
FRONT BACK PATTERN



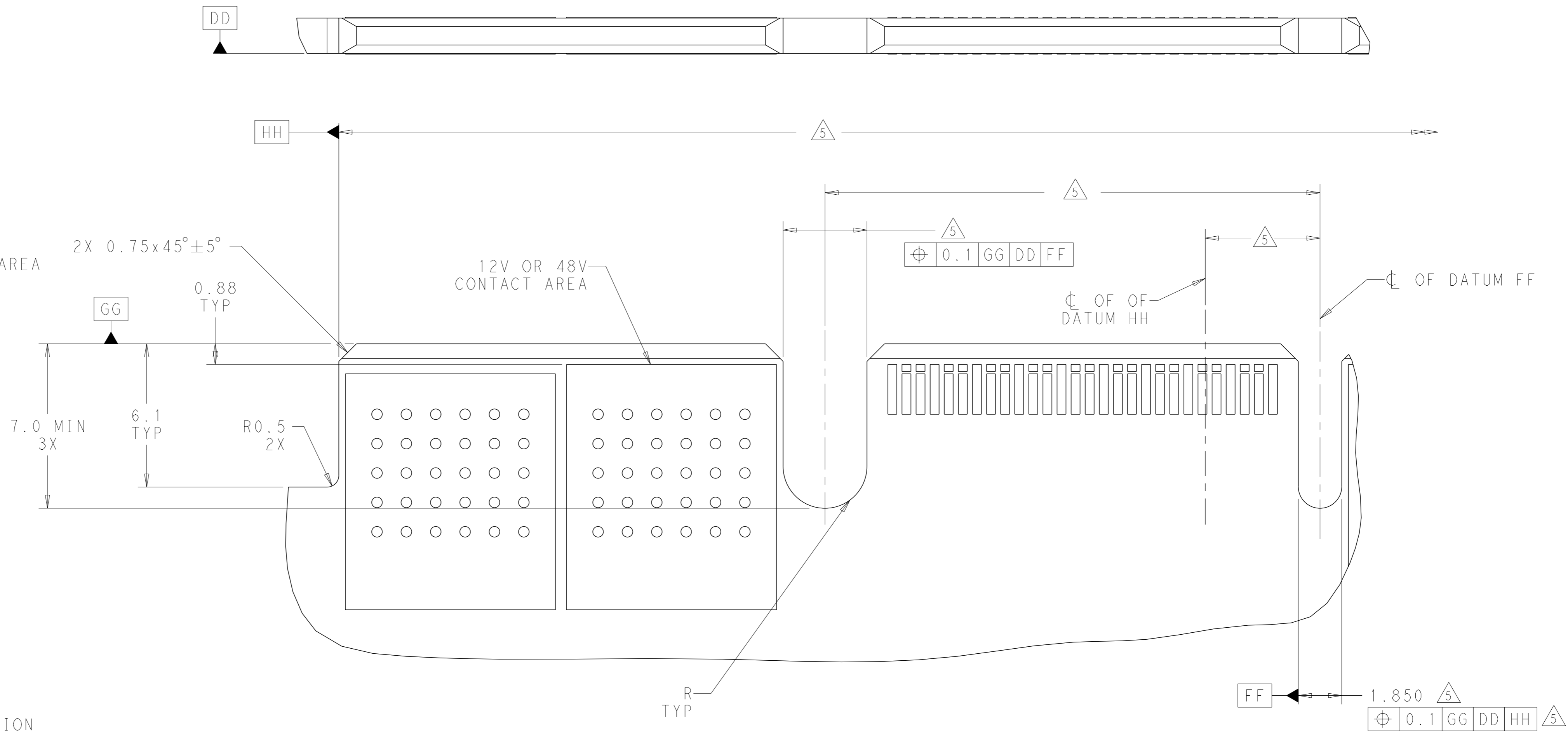
LEFT RIGHT PATTERN



CARD FOOTPRINT TO BE DETERMINED BY CUSTOMER



30VIA HOLES AS SHOWN ALLOW CONDUCTION FROM MATING SURFACE TO THICK INNER LAYERS.  
FRONT BACK: PATTERN ARE BLIND VIAS  
LEFT RIGHT: PATTERN ARE THROUGH HOLES



RECOMMENDED PCB (12V GEOMETRY SHOWN) OUTLINE DIMENSIONS. TOLERANCE VALUES ARE CRITICAL. PLEASE BE SURE TO DESIGNATE TOLERANCES TO PCB SUPPLIER TO ENSURE OPTIMIZED FUNCTIONALITY.

THIS DRAWING IS A CONTROLLED DOCUMENT.		OWN: J. McCLINTON	DATE: 01OCT2018	TE Connectivity
DIMENSIONS: mm		CHK: HOWARD ANDREWS	DATE: 01OCT2018	
TOLERANCES UNLESS OTHERWISE SPECIFIED:		APVD: HOWARD ANDREWS	DATE: 01OCT2018	NAME: RECEPTACLE ASSEMBLY, POWER
0 PLC ±	1 PLC ±0.2	PRODUCT SPEC	APPLICATION SPEC	SIZE: A1
2 PLC ±0.2	3 PLC ±	WEIGHT	SCALE: 5:1	CAGE CODE: 2344604
4 PLC ±	ANGLES FINISH	CUSTOMER DRAWING	SHEET 3 OF 3	REV F

Printed on 10 Nov 2021 14:55 (incl a Standard Time) from 1E45192

单击下面可查看定价，库存，交付和生命周期等信息

[>>TE Connectivity\(泰科\)](#)