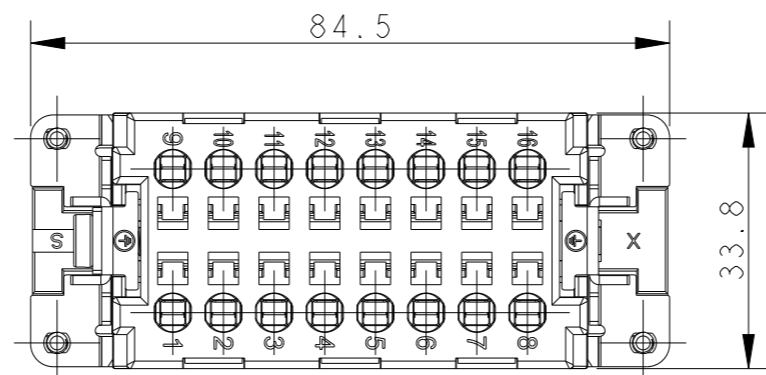
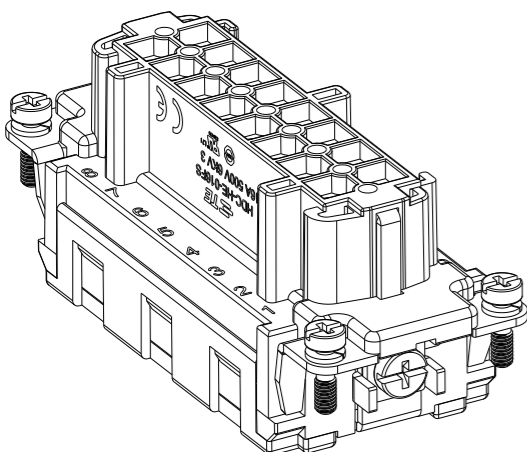
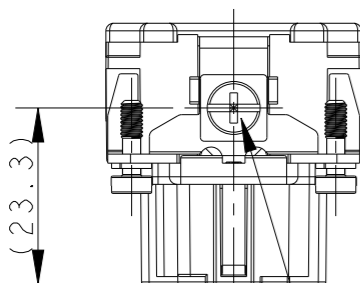


REVISIONS

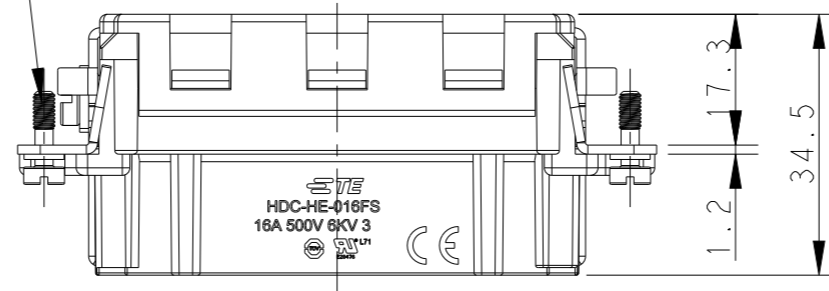
P	LTR	DESCRIPTION	DATE	DWN	APVD
A		INITIAL RELEASE	15APR2015	CY	CW
B		ECR-15-013759	09OCT2015	DW	CW
B1		ECR-16-009892	13JUL2016	RL	CW
C		ECR-21-106515	12AUG2021	SQ	CW



4X M3 SCREW
RECOMMENDED TIGHTENING
TORQUE 0.5Nm
4 X M3螺丝, 推荐扭力矩为 0.5Nm



M4 SCREW, RECOMMENDED
TIGHTENING TORQUE 1.2Nm
M4螺丝, 推荐扭力矩为 1.2Nm

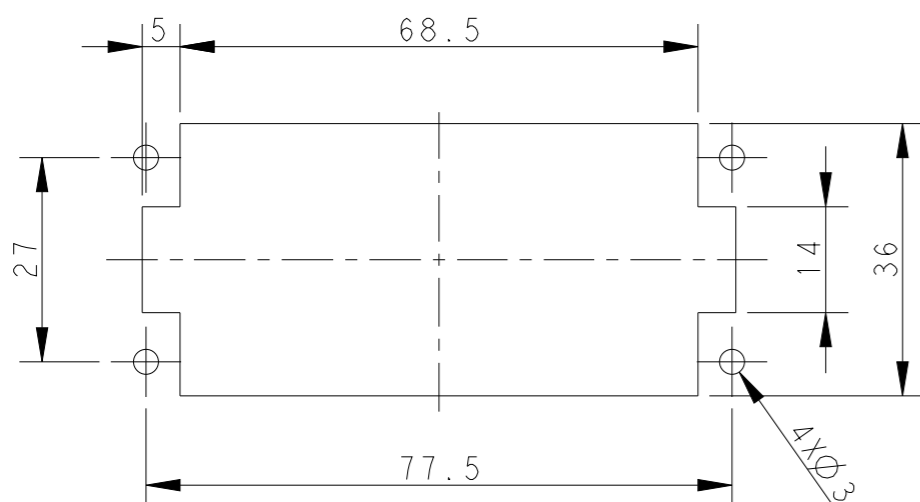


NOTES:

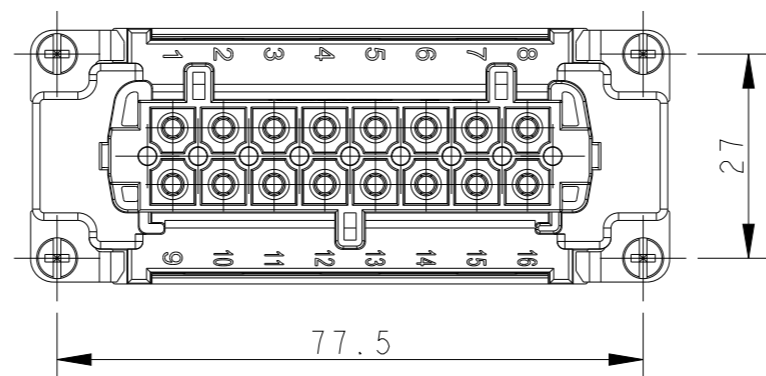
- TECHNICAL CHARACTERISTICS:
INSULATION MATERIAL: PC
RATED VOLTAGE: 500V
RATED CURRENT: 16A
INSULATION RESISTANCE: $\geq 400M\Omega$
RATED IMPULSE VOLTAGE: 6KV
POLLUTION DEGREE: 3
FLAMMABILITY: UL94V-0
MATING CYCLES: 500 CYCLES
WIRE RANGE: 0.5mm²~2.5mm² (AWG20-AWG14)
CONTACT FINISH: SILVER PLATED
CONTACT TYPE: SPRING CLAMP

注释:

- 技术参数:
绝缘材料: PC
额定电压: 500V
额定电流: 16A
绝缘电阻: $\geq 400M\Omega$
脉冲电压: 6KV
污染等级: 3
阻燃等级: UL94V-0
插拔次数: 500 次
接线范围: 0.5mm²~2.5mm² (AWG20-AWG14)
端子表面处理: 镀银
接线类型: 弹片压接



PANEL CUT OUT FOR INSERTS FOR
USE WITHOUT HOODS/HOUSING
不使用防护外壳时芯件的安装开孔图



T2040163201-001	HE-016-FS	HE-016 FEMALE INSERT, STAINLESS STEEL SCREW, SPRING CLAMP HE-016母插,带不锈钢螺丝,弹片	STAINLESS STEEL	STAINLESS STEEL
T2040163201-000	HE-016-FS	HE-016 FEMALE INSERT, SPRING CLAMP HE-016母插,弹片	STEEL	STEEL
PART NUMBER 料号	PART DESCRIPTION 描述	FIXING SCREW MAT'L 压线螺丝材质	GROUND CONTACT SCREW MAT'L 接地连接螺丝材质	

THIS DRAWING IS A CONTROLLED DOCUMENT.		DWN	15APR2015	TE Connectivity	
		CHK	15APR2015		
		APVD	15APR2015		
		NAME	HE-016-FS		
DIMENSIONS: mm		PRODUCT SPEC		SIZE	
		108-137044		A300779	
TOLERANCES UNLESS OTHERWISE SPECIFIED:		APPLICATION SPEC		CAGE CODE	
0 PLC ±-		114-137044		DRAWING NO	
1 PLC ±-		WEIGHT		RESTRICTED TO	
2 PLC ±-		-		-	
3 PLC ±-		Customer Drawing		SCALE	
4 PLC ±-				4:5	
ANGLES ±-				SHEET	
FINISH				1 OF 1	
-				REV	
-				C	

单击下面可查看定价，库存，交付和生命周期等信息

[>>TE Connectivity\(泰科\)](#)