

4

3

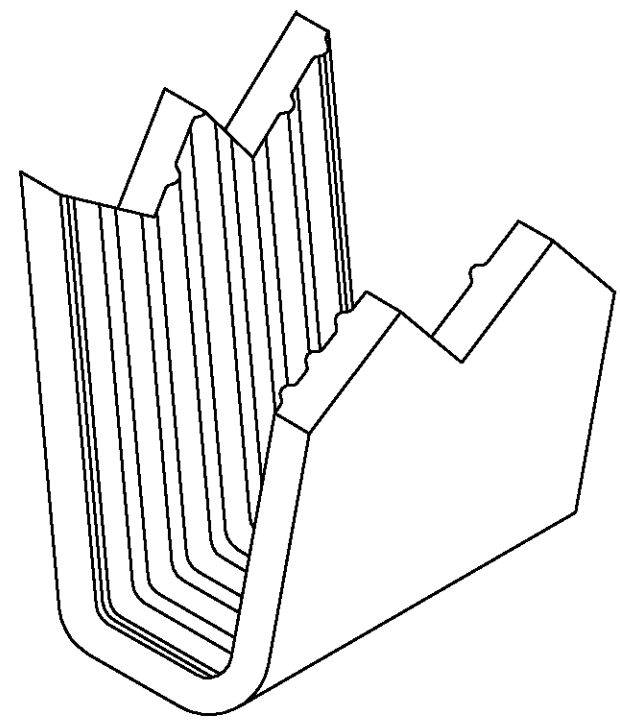
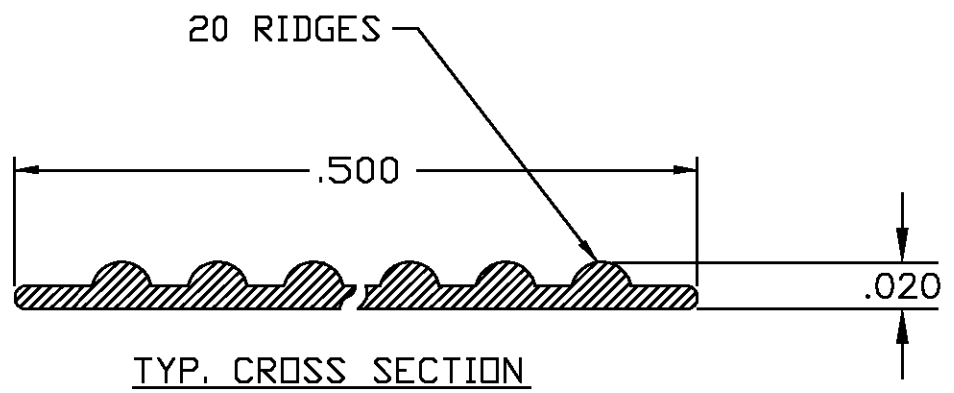
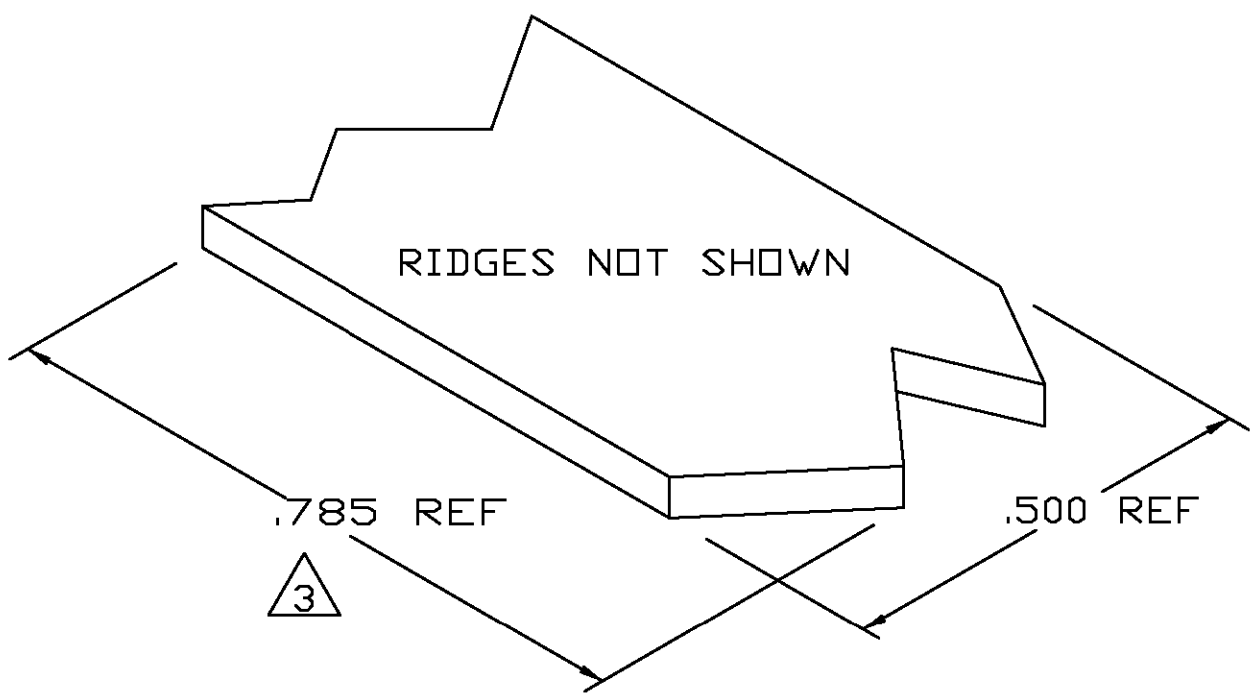
2

1

THIS DRAWING IS UNPUBLISHED. RELEASED FOR PUBLICATION
 © COPYRIGHT - BY TYCO ELECTRONICS CORPORATION. ALL RIGHTS RESERVED.

| LOC | DIST | REVISIONS | | | |
|-----|------|-------------|---------------------------|---------|-------|
| P | LTR | DESCRIPTION | DATE | DWN | APVD |
| AF | 50 | 0 | TRANSFERED TO TYCO FORMAT | 04OCT02 | MF EH |

- 1 CRIMPBAND MATERIAL PROVIDED IN CONTINUOUS STRIP.
- 2 REFERENCE DESCRIPTIVE PART NUMBER L200/202N20TB.
- 3 BLANK LENGTH DETERMINED BY 200/202 TOOLSET.



PARTIAL FORMED VIEW (REF)
 FORMED BY APPLICATION TOOLING

1601771-1
 PART NUMBER

| | | | | |
|--|---------------|--------------------------------------|---|--------------------|
| THIS DRAWING IS A CONTROLLED DOCUMENT. | | DWN MICHAEL S. FEHER 04OCT2002 | Tyco Electronics Corporation Harrisburg, PA 17105-3608 | |
| DIMENSIONS: INCHES | | CHK EDWARD HOWARD 04OCT2002 | NAME | |
| TOLERANCES UNLESS OTHERWISE SPECIFIED: 0 PLC ± - 1 PLC ± - 2 PLC ± - 3 PLC ± .005 4 PLC ± - ANGLES ± - | | APVD EDWARD HOWARD 04OCT2002 | CRIMPBAND, RTM | |
| MATERIAL UNS C26000 BRASS | FINISH TIN | PRODUCT SPEC - | APPLICATION SPEC - | RESTRICTED TO - |
| CUSTOMER DRAWING | | WEIGHT - | SIZE A3 | CAGE CODE 00779 |
| | | DRAWING NO 1601771 | | REV 0 |
| | | SCALE 1:1 | SHEET 1 | OF 1 |

单击下面可查看定价，库存，交付和生命周期等信息

[>>TE Connectivity\(泰科\)](#)