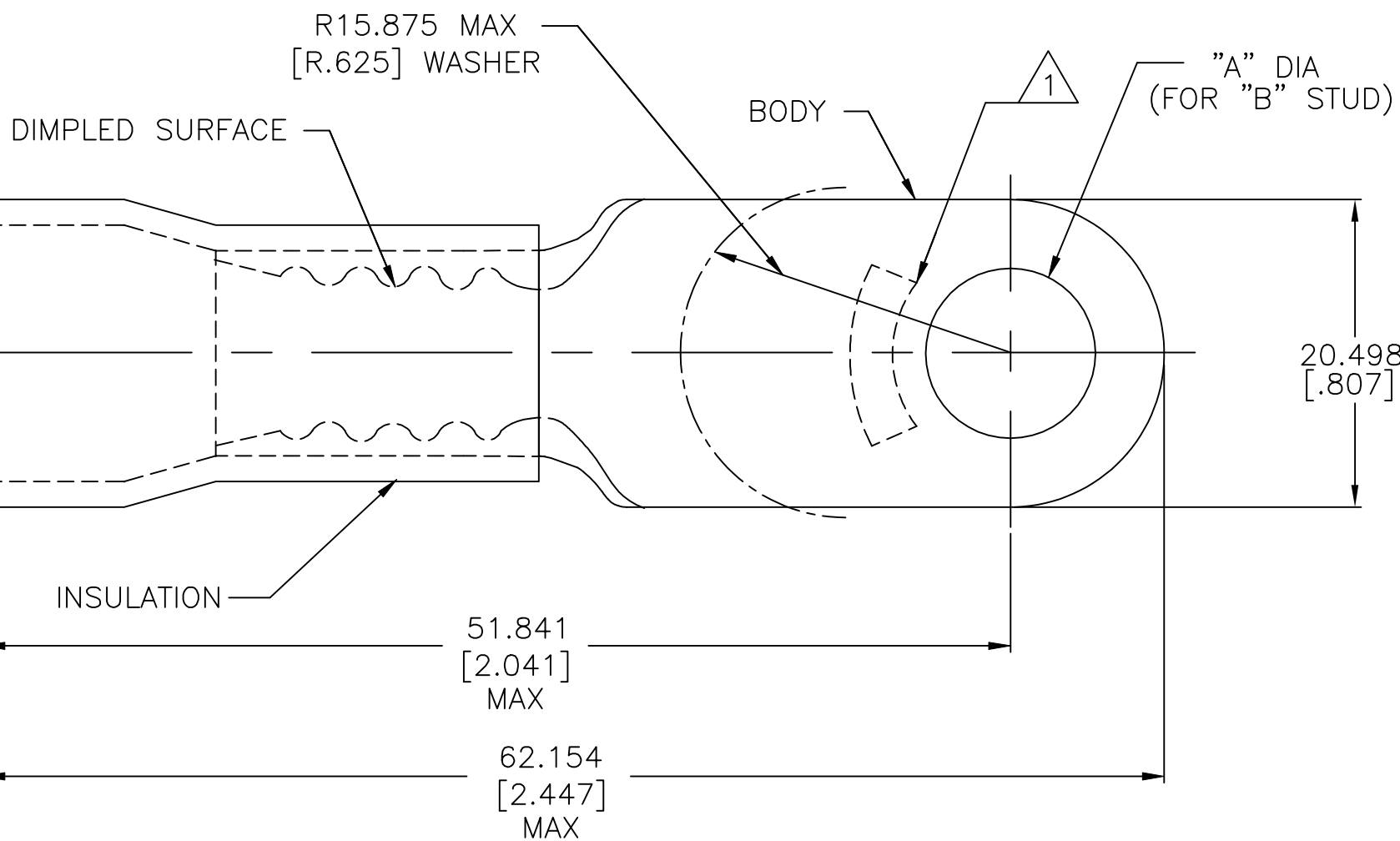


P	LTR	DESCRIPTION	DATE	DWN	APVD
	H1	REVISED PER ECO-11-002228	11FEB11	HMR	DR
	H2	REVISED PER ECO-17-014338	20APR2018	RS	DR



<b>AMP</b> WIRE RANGE	<b>RU</b> FILE E13288	<b>SR</b> LR7189 Certified
1/0 AWG STRANDED	1/0 AWG STRANDED	1/0 AWG STRANDED

- 1 STAMP AMP 1/0 W\* LOCATE APPROX AS SHOWN
- 2 BODY MATERIAL THK 1.778±0.051[.070±.002]
- 3 SEE TABLE FOR WIRE INSULATION DIA MAX
- 4 NOTE DELETED

16.891 [.665]	3/8	9.906±0.127 [.390±.005]		52045-5
17.374 [.684]	M8[5/16]	8.331±0.127 [.328±.005]	50	52045-1
WIRE INSULATION DIA MAX	"B"	"A"	QTY	PACKAGE TYPE
				PART NO

AMP INCORPORATED  
CUSTOMER SERVICE SYSTEMS

MAX RECOMMENDED OPERATING  
TEMPERATURE:  
105°C [221°F]

FOR ADDITIONAL  
PRODUCT INFORMATION OR  
COPIES OF DRAWINGS  
AND TECHNICAL DOCUMENTS

PRODUCT INFORMATION CENTER  
1-800-522-6752

VOLTAGE RATING:  
600 V MAX

FOR APPLICATION  
TOOLING INFORMATION

TOOLING ASSISTANCE CENTER  
1-800-722-1111

CIRCULAR MIL AREA:  
42.41-60.55mm<sup>2</sup>[83,700-119,500]  
STRANDED

FOR ORDER ENTRY

1-800-526-5142

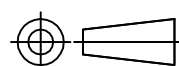
THIS DRAWING IS A CONTROLLED DOCUMENT FOR  
AMP INCORPORATED. IT IS SUBJECT TO CHANGE  
AND THE CONTROLLING ENGINEERING ORGANIZATION  
SHOULD BE CONTACTED FOR THE LATEST REVISION.

MATERIAL  
BODY: COPPER PER ASTM B-152  
INSULATION: PVC

FINISH  
BODY: TIN PLATE  
PER ASTM-B545  
INSULATION: COLOR BLUE

THIS DRAWING IS A CONTROLLED DOCUMENT.

DIMENSIONS:  
mm [INCHES]



TOLERANCES UNLESS  
OTHERWISE SPECIFIED:  
0 PLC ± -  
1 PLC ± -  
2 PLC ± -  
3 PLC ± 0.127[.005]  
4 PLC ± -  
ANGLES ± -

DWN  
S.S. GOULDEN 9-28-93

CHK  
R. HERSEY 9-28-93

APVD  
B. BARE 9-28-93

PRODUCT SPEC  
UL486 A-B

APPLICATION SPEC  
114-2161

WEIGHT  
-

CUSTOMER DRAWING

**STE** TE Connectivity Ltd.

NAME  
TERMINAL, RING TONGUE,  
PLASTI-GRIP,  
WIRE SIZE: 1/0 AWG

SIZE  
A3

CAGE CODE  
00779

DRAWING NO  
C=52045

RESTRICTED TO  
-

SCALE 4:1 SHEET 1 OF 1 REV H2

单击下面可查看定价，库存，交付和生命周期等信息

[>>TE Connectivity\(泰科\)](#)