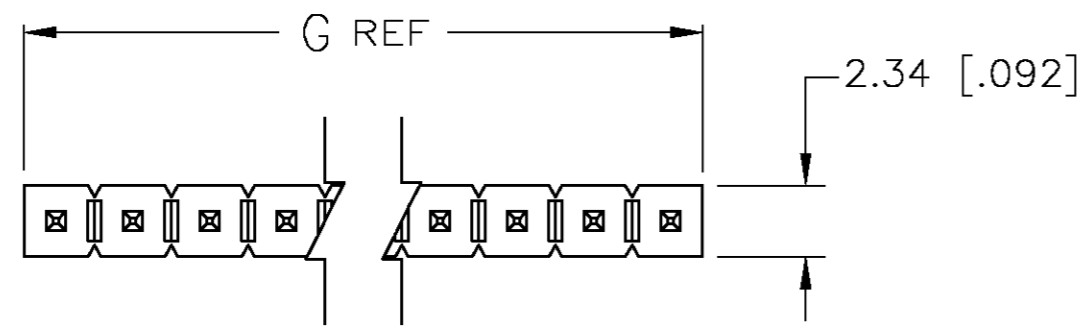
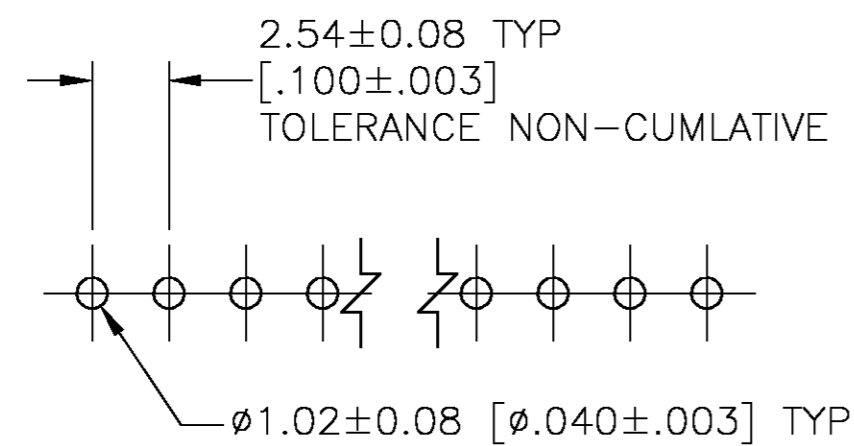
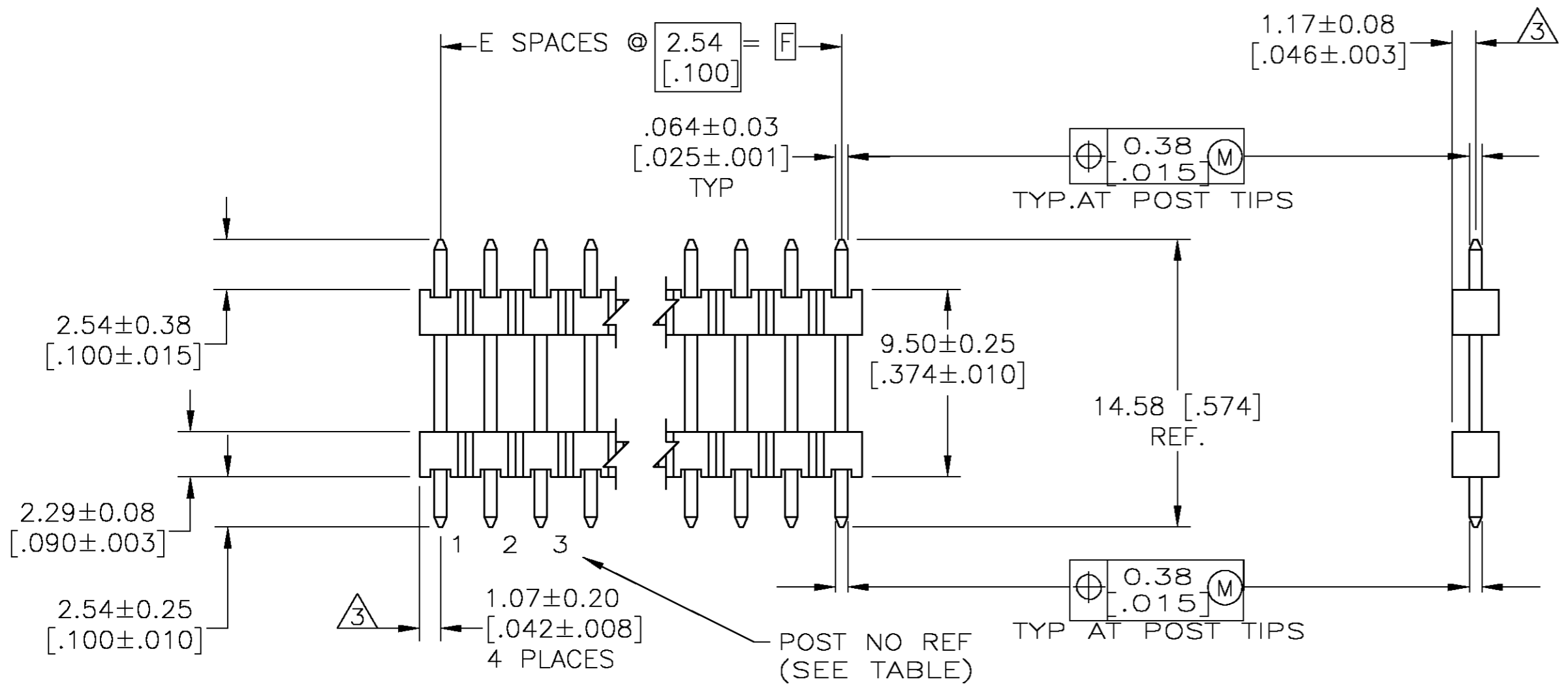


THIS DRAWING IS UNPUBLISHED. RELEASED FOR PUBLICATION
 © COPYRIGHT BY TYCO ELECTRONICS CORPORATION. ALL RIGHTS RESERVED.

LOC		DIST		REVISIONS			
P	LTR	DESCRIPTION	DATE	DWN	APVD		
AD	00	F	REV PER 0G3C-0058-04	06APR04	MB	JG	



1. ASSEMBLY MAY BE BROKEN TO THE DESIRED NUMBER OF POSITIONS
2. TRUE POSITION TOLERANCE OF THE POST TIPS APPLIES WHEN THE HEADER IS HELD FLAT AGAINST THE PRINTED CIRCUIT BOARD
3. THE NOTED DIMENSIONS APPLY AT THE INTERSECTION OF THE POST AND HOUSING
4. HOUSING: LCP, COLOR-BLACK.
5. FINISH: 0.000254-0.00508 [.000100-.000200] MIN MATTE TIN-LEAD OVER 0.00127 [.000050] MIN NICKEL ENTIRE POST.



19.91 [.784]	17.78 [.700]	7	-	8	147285-2
19.91 [.784]	17.78 [.700]	7	1,2,7,8	8	147285-1
G	F	E	HOLDDOWN POST CONFIG LOCATION	NO. OF POSITIONS	PART NUMBER

THIS DRAWING IS A CONTROLLED DOCUMENT.

DWN	B. HAYMAKER	26JUL00
CHK	J. GESFORD	23JUN99
APVD	J. GESFORD	23JUN99
PRODUCT SPEC	-	
APPLICATION SPEC	-	
WEIGHT	-	
CUSTOMER DRAWING	SCALE 4:1	SHEET 1 OF 1

Tyco Electronics Corporation
 Harrisburg, PA 17105
 NAME: HEADER ASSEMBLY, MOD II, STACKING, SINGLE ROW, .025 SQ.POST, UNSHROUDED, HIGH TEMP, RET LEGS
 SIZE: A2 CAGE CODE: 00779 DRAWING NO: C=147285 RESTRICTED TO: -
 MATERIAL: 4 FINISH: 5

RECOMMENDED HOLE LAYOUT

单击下面可查看定价，库存，交付和生命周期等信息

[>>TE Connectivity\(泰科\)](#)