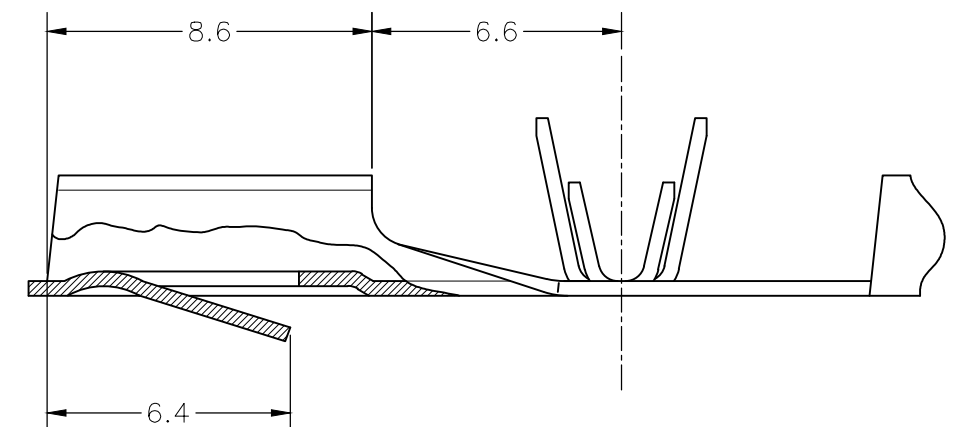
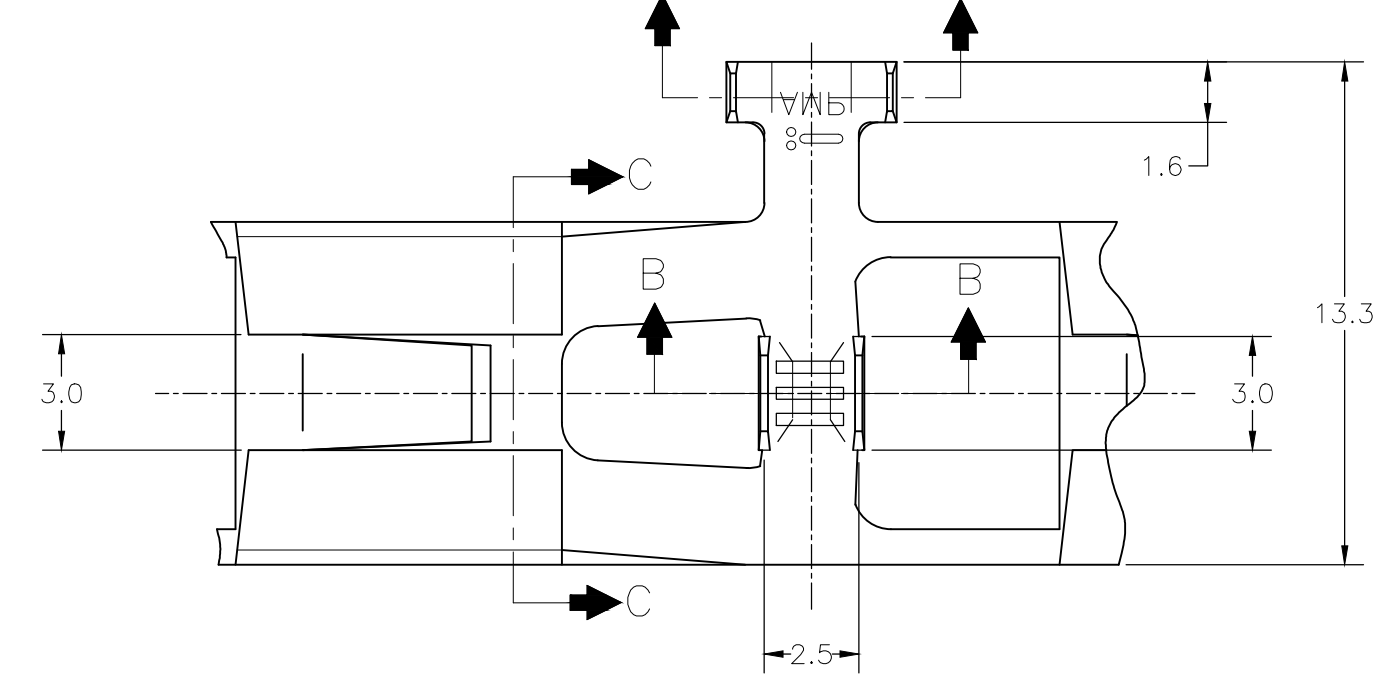
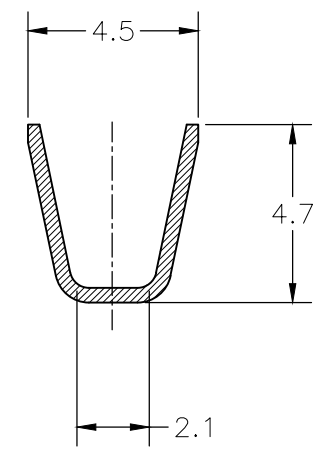


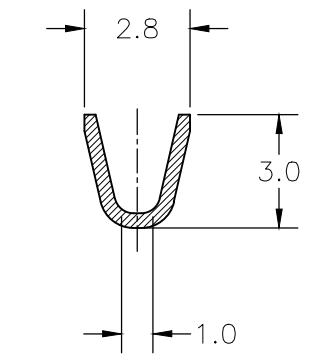
CORTE C-C SECTION C-C



- 1 - OBSOLETE PARTS: OBSOLETE CIS STREAMLINING PER D.RENAUD/D.SINISI.
- 2 - CAN ALSO BE USABLE WITH CABLE FOR WIRE RANGE: 0.75mm² / INSUL.RANGE: DIA. 1.70 1.90mm (FLRY B), CRIMPED SPECIFICALLY IN OV CONDICTION FOR THE INSULATION BARREL.
- 3 - CAN ALSO BE USABLE WITH CABLE FOR WIRE RANGE: 1,00 mm² / INSUL.RANGE: DIA. 1.90 - 2.10mm (FLRY B), CRIMPED SPECIFICALLY IN OV CONDICTION FOR THE INSULATION BARREL.



CORTE A-A SECTION A-A



CORTE B-B SECTION B-B

LOOSE PIECE	FINISH	MATERIAL	PART NUMBER
1-880681-4	ESTANHADO/TINNED	BRONZE FOSF./PHOS. BRONZE	880681-4
1-880681-3	---	BRONZE FOSF./PHOS. BRONZE	880681-3
1-880681-2	ESTANHADO/TINNED	LATÃO/BRASS	880681-2
1-880681-1	---	LATÃO/BRASS	880681-1

THIS DRAWING IS A CONTROLLED DOCUMENT.

DWN H.LIVERARO 25JUL2001	 TE Connectivity	.312 SERIES FLAG FASTIN-FASTON REC.
CHK P.L.FARIA 25JUL2001		
APVD J.A.MARSON 25JUL2001		
PRODUCT SPEC 108-20020		
APPLICATION SPEC 114-2065	NAME	
WEIGHT NA	SIZE A3	CAGE CODE 00779
CUSTOMER DRAWING	DRAWING NO C-880681	RESTRICTED TO -
	SCALE 1:1	SHEET 1 OF 1
		REV B2

3	INSUL. DIA. RANGE	2.0-3.3mm
	WIRE RANGE	0.5-1.0mm ²

DIMENSIONS: mm	TOLERANCES UNLESS OTHERWISE SPECIFIED:
	0 PLC ± -
	1 PLC ± 0.3
	2 PLC ± -
	3 PLC ± -
	4 PLC ± -
	ANGLES ± 1°
MATERIAL SEE TABLE	FINISH SEE TABLE

单击下面可查看定价，库存，交付和生命周期等信息

[>>TE Connectivity\(泰科\)](#)