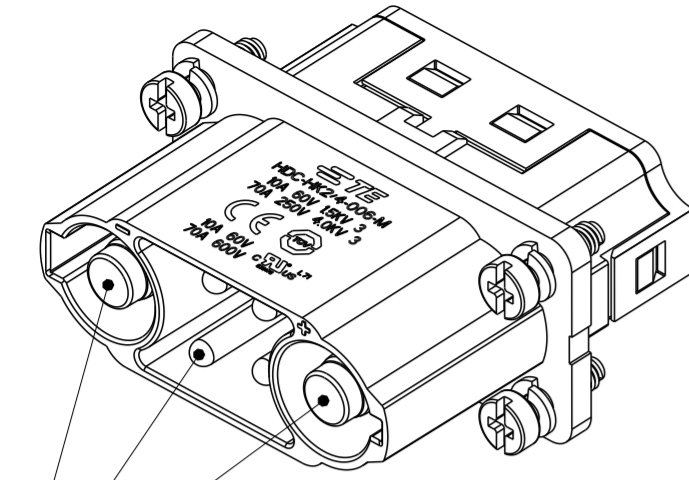
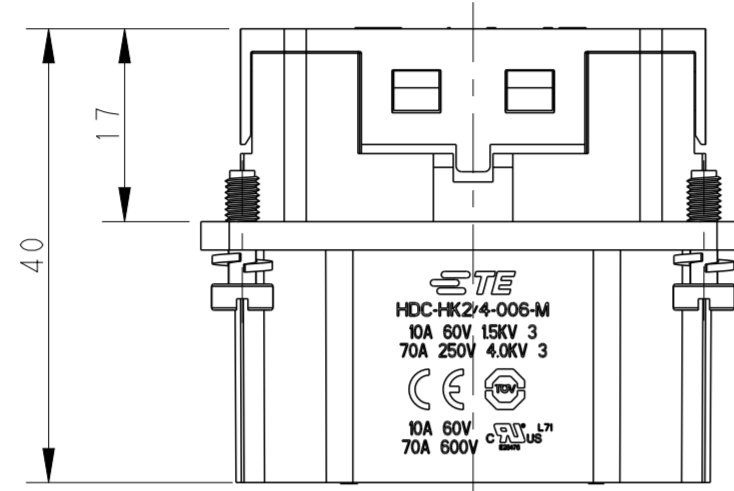


P	LTR	DESCRIPTION	DATE	DWN	APVD
A		INITIAL	09AUG2022	DW	CW
A1		ECR-23-170694	29MAR2023	DW	CW

基本尺寸	<=6	>6-30	>30-50	>50-100	未注角度
公差	±0.1	±0.2	±0.3	±0.5	±0.5°



CONTACT NEED TO BE ORDERED SEPARATELY  
端子需要单独订购, 不包含在此料号中.



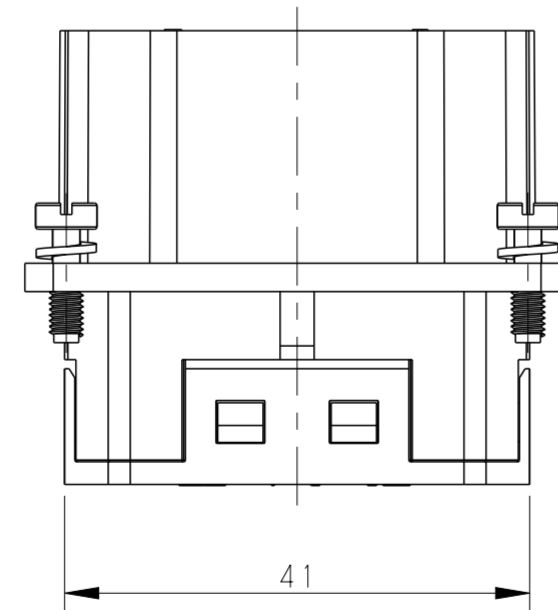
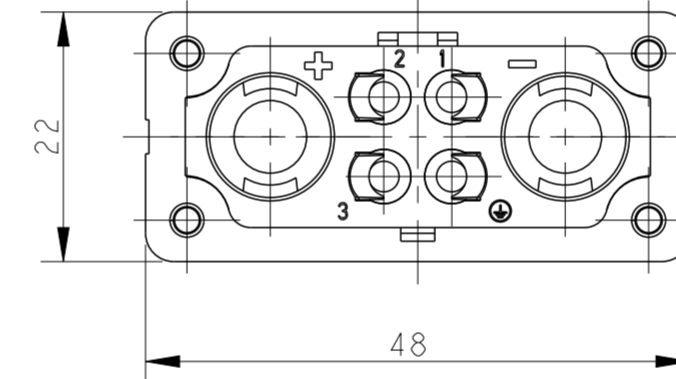
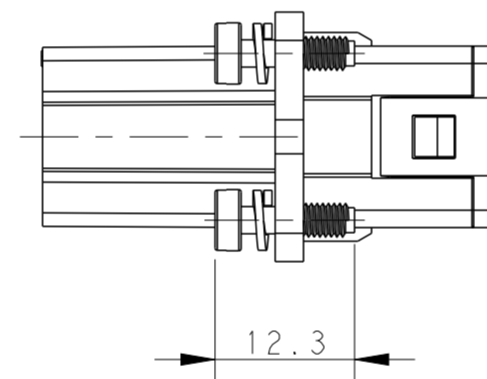
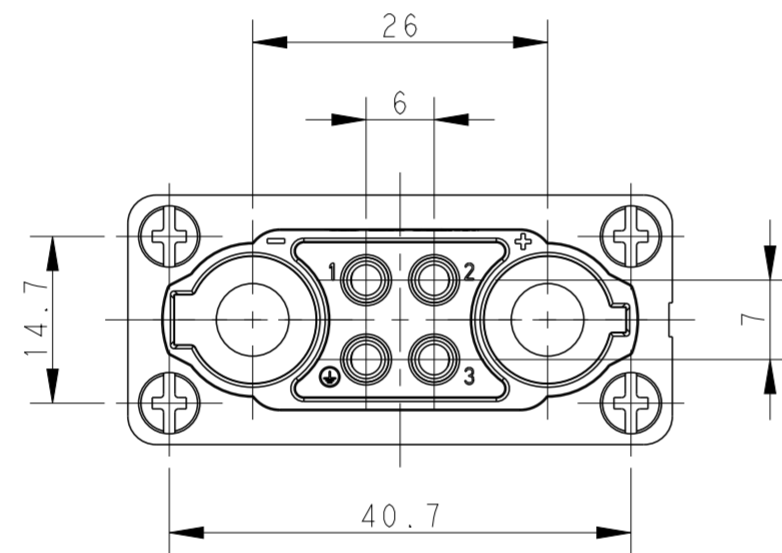
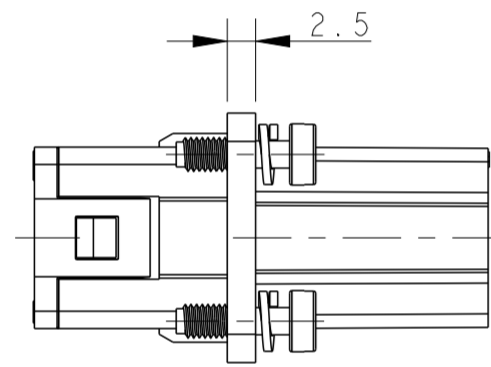
CERTIFICATION	PARAMETERS
Acc. to CUL(CNR)	POWER CURRENT: 70A @AWG 6(16 mm <sup>2</sup> ); SIGNAL CURRENT: 10A @AWG 14(2.5 mm <sup>2</sup> ); 电源电流: 70A @AWG 6(16 mm <sup>2</sup> ); 信号电流: 10A @AWG 14(2.5 mm <sup>2</sup> )
Acc. to UL(USR)	POWER CURRENT: 80A @AWG 6(16 mm <sup>2</sup> ); SIGNAL CURRENT: 3A @AWG 22(0.3 mm <sup>2</sup> ); 电源电流: 80A @AWG 6(16 mm <sup>2</sup> ); 信号电流: 3A @AWG 22(0.3 mm <sup>2</sup> )
Acc. to TUV	POWER CURRENT: 70A @AWG 6(16 mm <sup>2</sup> ); SIGNAL CURRENT: 10A @AWG 14(2.5 mm <sup>2</sup> ); 电源电流: 70A @AWG 6(16 mm <sup>2</sup> ); 信号电流: 10A @AWG 14(2.5 mm <sup>2</sup> )

NOTES:

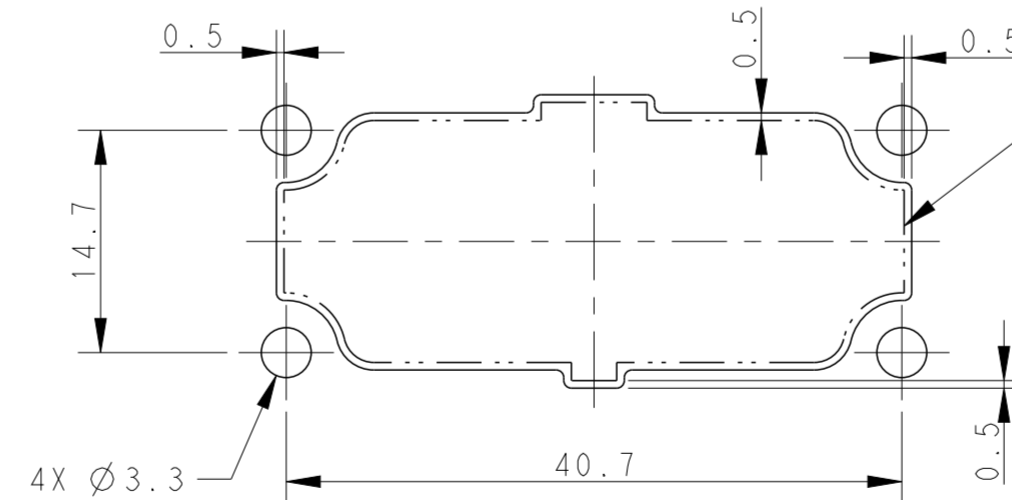
- TECHNICAL CHARACTERISTICS:  
INSULATION MATERIAL: PC, BLACK  
RATING VOLTAGE: POWER: 250V MAX.; SIGNAL: 60V MAX.  
RATING CURRENT: POWER: 80A MAX.; SIGNAL: 10A MAX.  
INSULATION RESISTANCE: >=400MΩ  
RATED IMPULSE VOLTAGE: POWER: 4.0KV  
SIGNAL: 1.5KV  
  
POLLUTION DEGREE: 3  
MATING CYCLES: 30000 CYCLES  
WIRE RANGE:  
POWER: 10-16mm<sup>2</sup> (8-6AWG)  
SIGNAL: 0.14-2.5mm<sup>2</sup> (26-14AWG)  
CONTACT TYPE: CRIMP CONTACT
- CONTACT NEED TO BE ORDERED SEPARATELY  
POWER CONTACT PN REFER TO DRAWING: T2400031XX002  
SIGNAL CONTACT PN REFER TO DRAWING: T20300310XX000

注释:

- 技术参数:  
绝缘材料: PC, 黑色  
额定电压: 电源: 250V MAX.; 信号: 60V MAX.  
额定电流: 电源: 80A MAX.; 信号: 10A MAX.  
绝缘电阻: >=400MΩ  
额定脉冲电压: 电源: 4.0KV; 信号: 1.5KV  
污染等级: 3  
插拔次数: 30000次  
接线范围:  
电源: 10-16mm<sup>2</sup> (8-6AWG)  
信号: 0.14-2.5mm<sup>2</sup> (26-14AWG)  
接线类型: 冷压接
- 端子需要单独订购  
电源端子料号参考图面: T2400031XX002  
信号端子料号参考图面: T20300310XX000



PANEL CUT FOR INSERT FOR REFERENCE



DOT LINE SHOW PRODUCT OUTLINE  
PANEL SIZE OFFSET 0.5MM FROM PRODUCT OUTLINE  
虚线框为产品的外轮廓  
面板尺寸从产品向外偏移0.5mm

T2120062101-001	HK2/4-006-M	HK2/4-006 MALE INSERT HK2/4-006 公插
PART NUMBER 产品料号	PART DESCRIPTION 产品描述	
THIS DRAWING IS A CONTROLLED DOCUMENT. DWN 28 JUN 2022 DAVID WANG CHK 28 JUN 2022 GINO YAO APVD 28 JUN 2022 CHRIS WANG		TE Connectivity
DIMENSIONS: mm TOLERANCES UNLESS OTHERWISE SPECIFIED: 0 PLC ± 1 PLC ± 2 PLC ± 3 PLC ± 4 PLC ± ANGLES ± FINISH -		NAME HK2/4-006-M PRODUCT SPEC 108-137613 APPLICATION SPEC 114-137613 WEIGHT - CUSTOMER DRAWING
SCALE 3:2		RESTRICTED TO -
SHEET 1 OF 1		REV A1

单击下面可查看定价，库存，交付和生命周期等信息

[>>TE Connectivity\(泰科\)](#)