

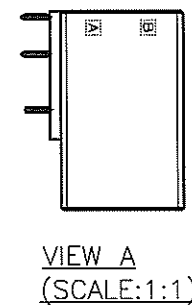
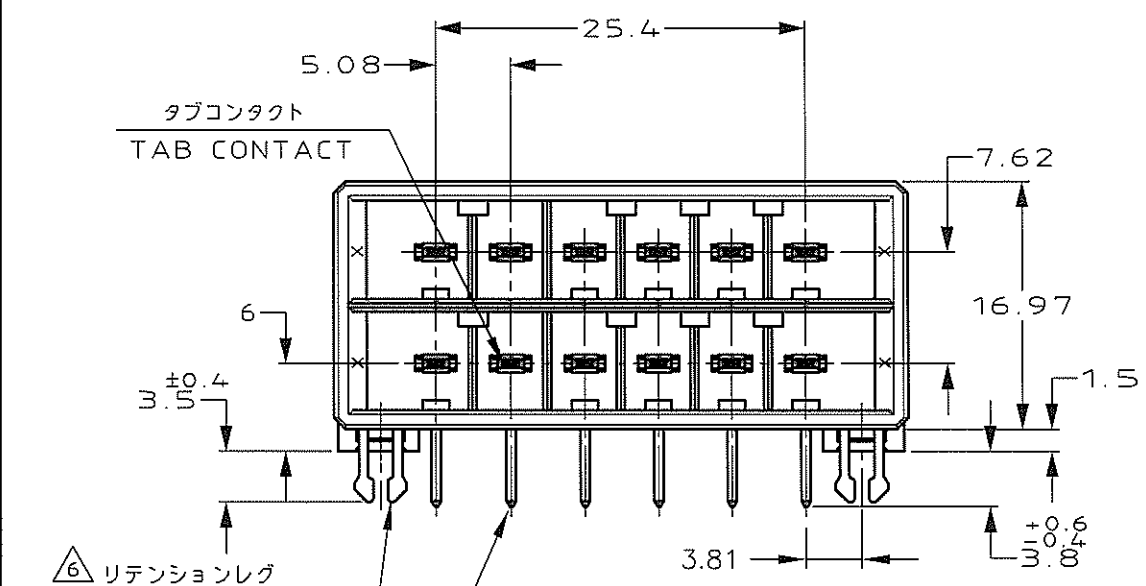
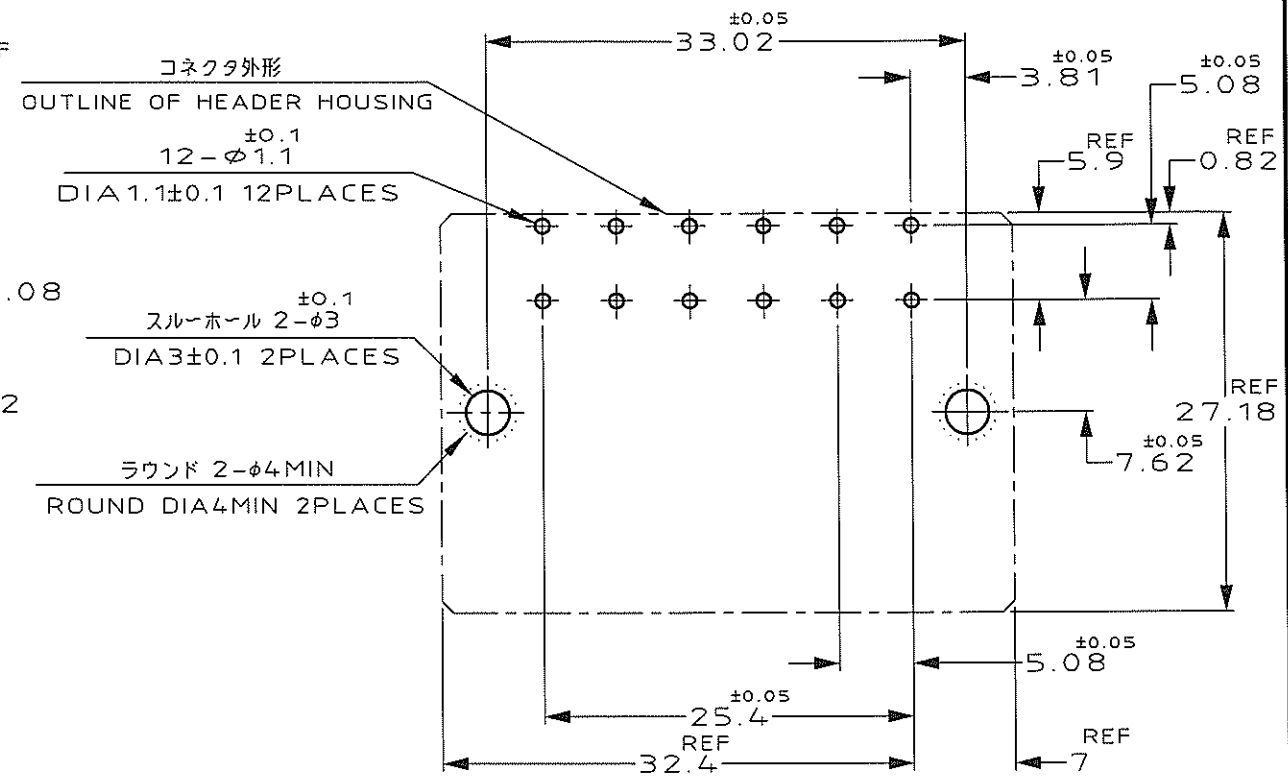
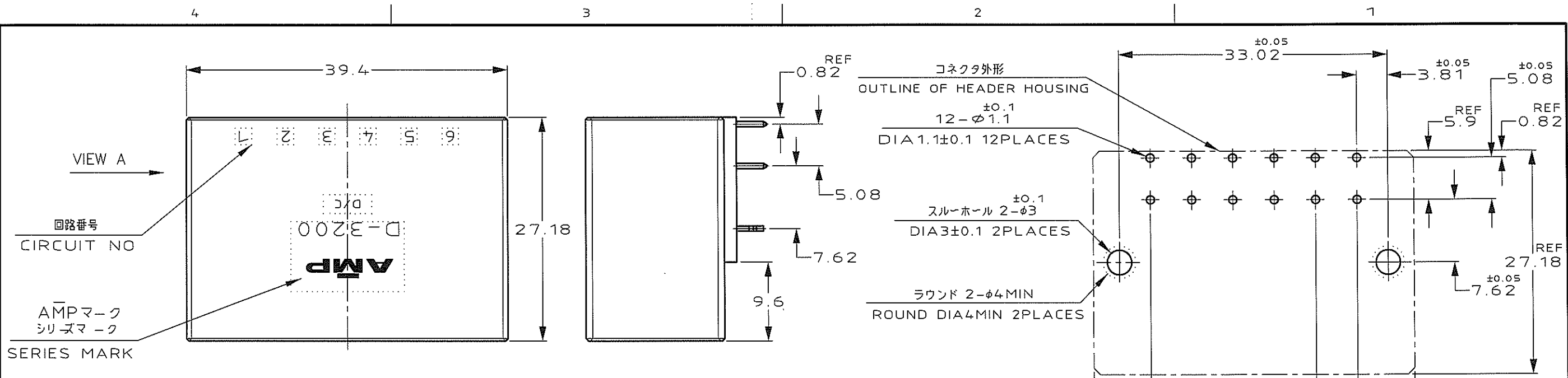
NUMBER 316081

3rd ANGLE PROJECTION

METRIC

DIMENSIONS IN MILLIMETERS. DO NOT SCALE PRINT

PRINT DIST



推奨基板取付け寸法  
PC 基板厚: 1.6 ± 0.1  
(非累積公差)  
(コネクタ搭載面)

RECOMEND PC BOARD HOLE PATTERN  
PC BOARD THICKNESS: 1.6 ± 0.1  
(NOT ACCUMULATE TOLERANCE)  
(CONNECTOR MOUNT SIDE)

- 注記
- 材料: ハウジング: ガラス入り熱可塑性ポリエステル樹脂 (94V-0), 色: 黒  
コンタクト: 銅合金  
リテンションレグ: 銅合金
  - めっき: コンタクト: 全面Ni下地  
接触部: 0.38 μm MIN金めっき
  - めっき: コンタクト: 全面Ni下地  
接触部: 0.76 μm MIN金めっき
  - めっき: コンタクト: 全面Ni下地  
接触部: 2.0 μm MINスズめっき
  - めっき: リテンションレグとコンタクト半田付部  
ニッケル下地の上に半田めっき
  - めっき: リテンションレグとコンタクト半田付部: ニッケル下地の上にスズめっき
- NOTES
- MATERIAL: HOUSING: GLASS FILLED THERMO PLASTIC, POLYESTER (94V-0), COLOR: BLACK  
CONTACT: COPPER ALLOY  
RETENTION LEG: COPPER ALLOY
  - FINISH (CONTACT AREA): 0.38 μm MIN GOLD PLATING OVER Ni PLATING
  - FINISH (CONTACT AREA): 0.76 μm MIN GOLD PLATING OVER Ni PLATING
  - FINISH (CONTACT AREA): 2.0 μm MIN TIN PLATED OVER NICKEL
  - FINISH (RETENTION LEG): TIN LEAD PLATED (CONTACT TAIL) OVER NICKEL
  - FINISH (RETENTION LEG): TIN PLATED (CONTACT TAIL) OVER NICKEL
  - OBSOLETE PARTS: OBSOLETE CIS STREAMLINING PER D.RENAUD/D.SINISI

KEYING LOCATION	A ROW KEYING	B ROW KEYING	FINISH	製品番号	PART NO.
B ROW	X	Y	△6 △4	3-316081-5	△7
A ROW	X	Y	△6 △3	3-316081-3	
			△6 △2	3-316081-2	
B ROW	Y	Y	△6 △4	2-316081-5	
A ROW	Y	Y	△6 △3	2-316081-3	
			△6 △2	2-316081-2	
B ROW	X	X	△6 △4	1-316081-5	
A ROW	X	X	△6 △3	1-316081-3	
			△6 △2	1-316081-2	



WIRE RANGE	INSULATION DIA	NAME	12 POS DOUBLE ROW HORIZONTAL HDR ASS'Y FOR DYNAMIC D-3200		
MATERIAL SEE NOTE 注記参照	FINISH SEE NOTE 注記参照	DR. 4/JUL/95 K.IKEDA	DE. 4/JUL/95 K.IKEDA	CHK. 4/JUL/95 Y.ISHIKAWA	APP. 4/JUL/95 S.MANABE
一般公差 (GENERAL TOLERANCE)		SIZE	LOC	NUMBER	
10% ±0.3 30% ±0.4 50% ±0.45 角度 ±3'		A3	J	C-316081	
SCALE		REV.	SHEET		
2-1		B4	1 OF 1		

B4	REVISED PER ECO-11-005030	RK	HMR	20MAR 11
LTR	REVISION RECORD	DR	CHK	DATE

单击下面可查看定价，库存，交付和生命周期等信息

[>>TE Connectivity\(泰科\)](#)