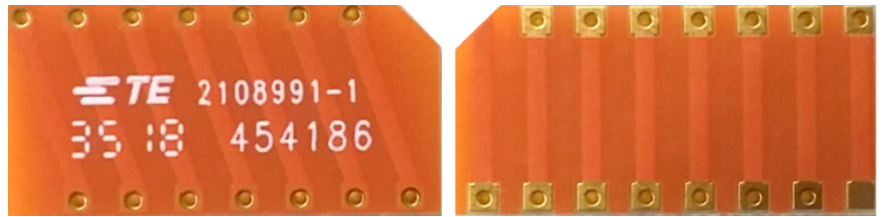


698– 960 MHz Helical Antenna for IoT/ LPWAN/ ISM

Part Number: 2108991-1



Product Facts

- Global LPWAN/ ISM band antenna
- Easy tuning capability
- 4 different frequency bands can be selected, determined by PCB pad layout
- Available in Tape & Reel packaging
- Minimum matching circuits required
- Bandwidth and performance is dependent on ground plane size

Specifications

- Frequency Range(MHz) — 698-960
- Peak Gain — See the below chart
- VSWR — < 3.5:1
- Azimuth Beam width — Omni directional
- Power Handling — 10 Watt cw
- Feed Point Impedance — 50 ohms
- Size — 18.00mm x 9.00mm x 1.57mm
- Weight — <0.5g
- Mounting — Surface-mount technology
- Keep Out Area — See diagram on page 7
- Operating Temperature — -40~+85°C

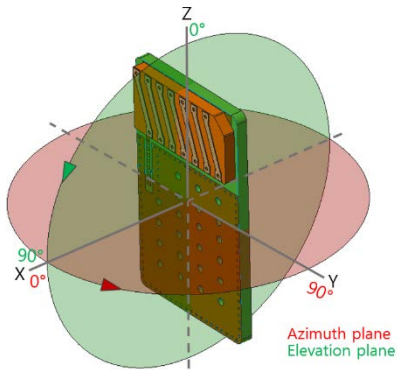
Summary data

	698 – 746 MHz	734 – 746 MHz	787 – 894 MHz	824 – 960 MHz
Figure				
VSWR				
Efficiency [%]				
Peak Gain [dBi]	+ 0.2	+ 0.1	+ 0.5	+ 1.2

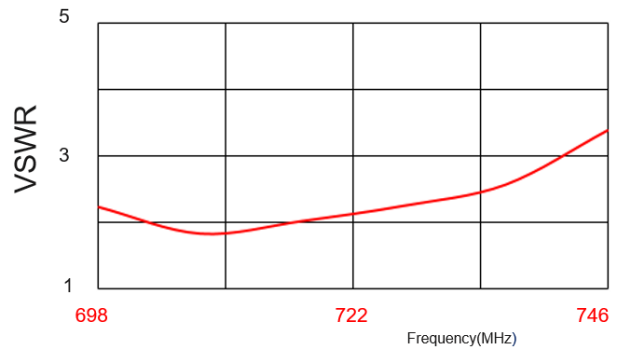
698–960 MHz Helical Antenna for IoT/LPWAN/ISM

698-746MHz

Test Orientation in Free Space

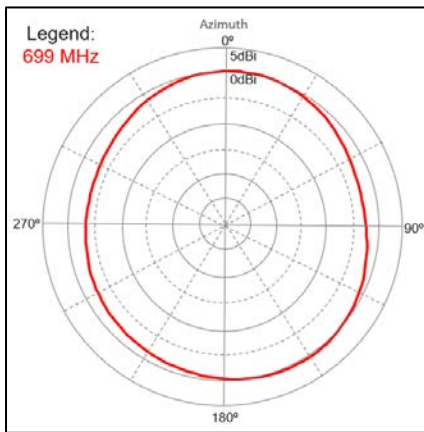


VSWR

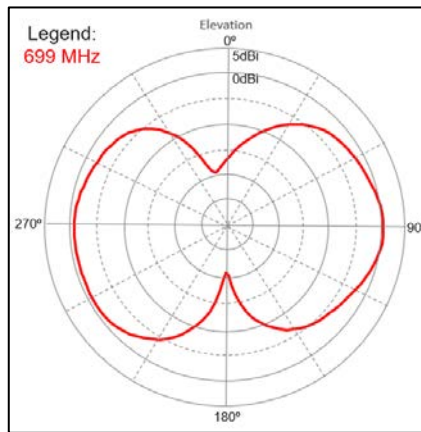


Azimuth

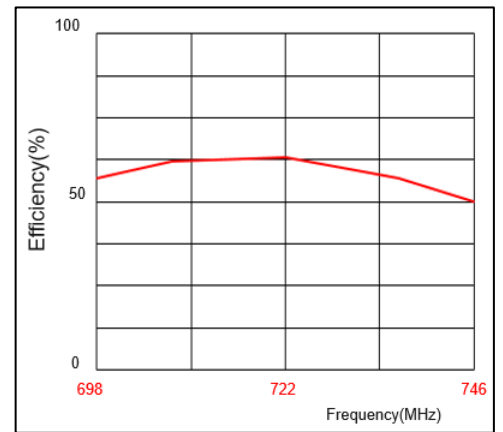
698-746MHz



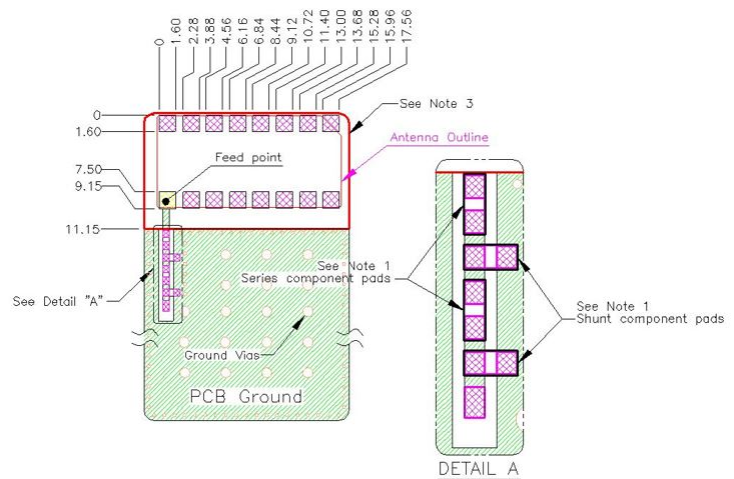
Elevation



Efficiency



Mounting Guide



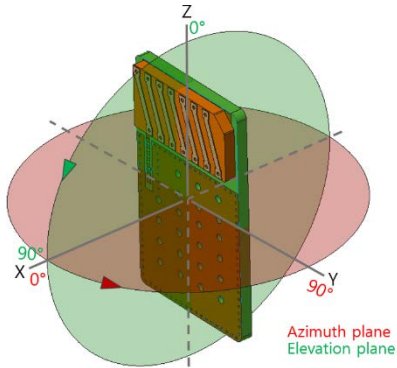
- NOTES: 1. Suggested matching component pads.
 2. Antenna must be mounted on the edge of PCB.
 3. No copper allowed in designated area on all PCB layer -
 4. For more information please call TE.

Dimensions: mm
 Diagram is not to scale

698–960 MHz Helical Antenna for IoT/ LPWAN/ ISM

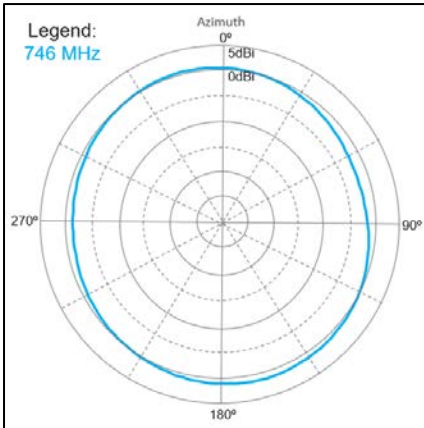
734-746MHz

Test Orientation in Free Space

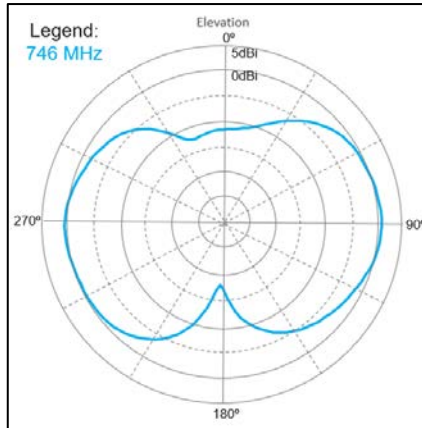


Azimuth

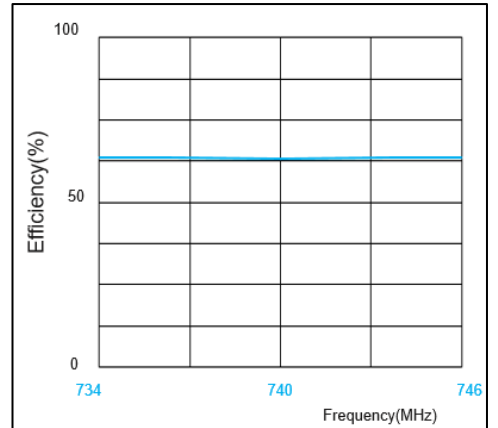
734-746MHz



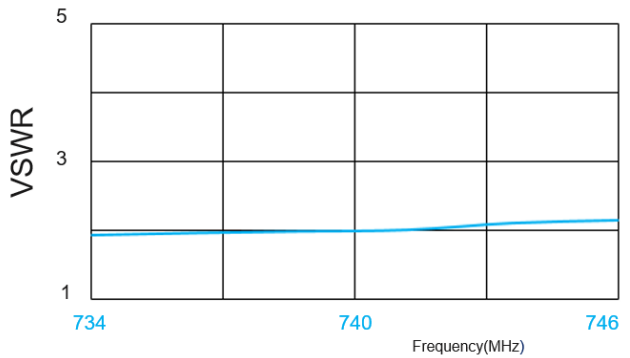
Elevation



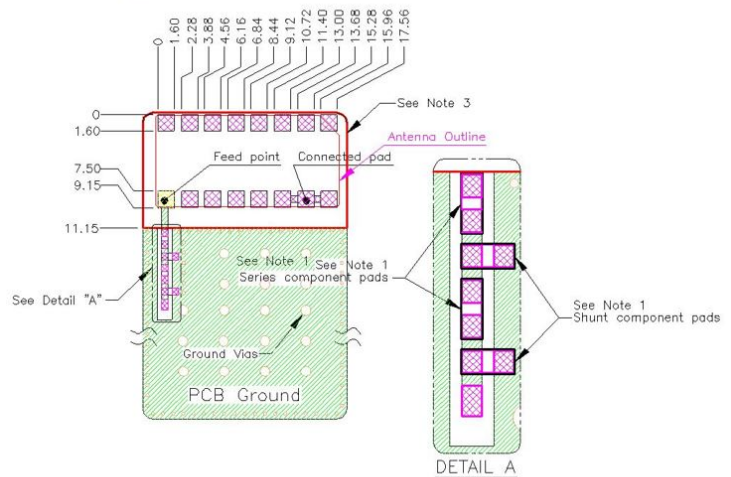
Efficiency



VSWR



Mounting Guide



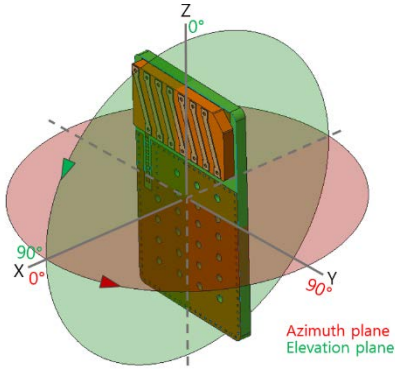
- NOTES: 1. Suggested matching component pads.
 2. Antenna must be mounted on the edge of PCB.
 3. No copper in designated area on all PCB layer -
 4. For more information please call TE.

Dimensions: mm
 Diagram is not to scale

698–960 MHz Helical Antenna for IoT/ LPWAN/ IS

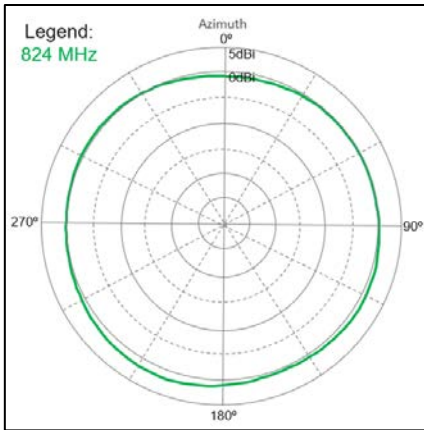
787-894MHz

Test Orientation in Free Space

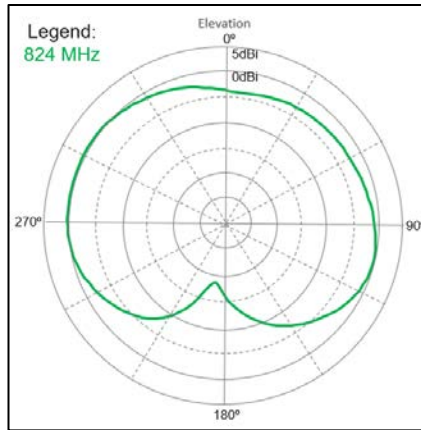


Azimuth

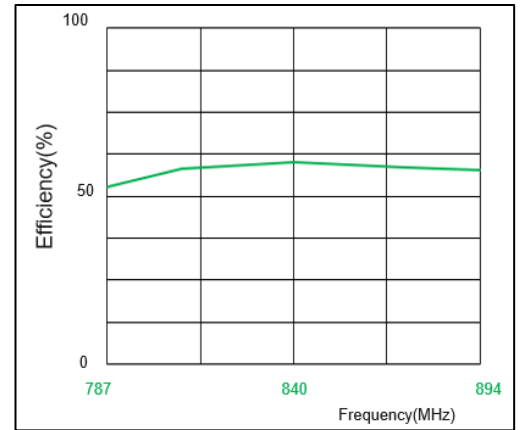
787-894MHz



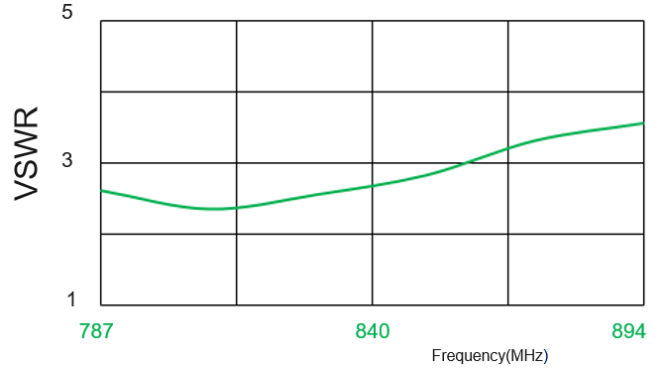
Elevation



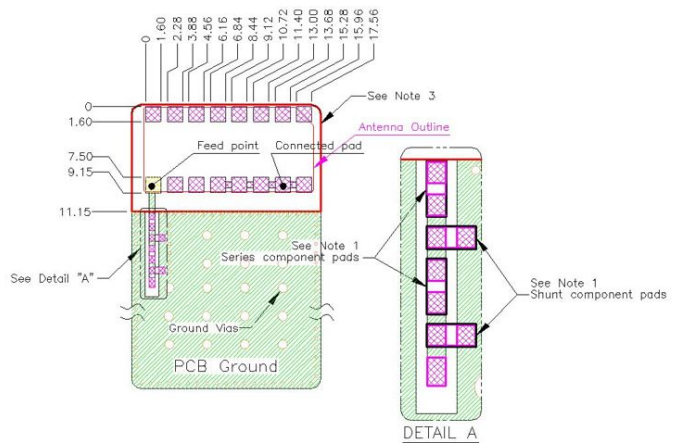
Efficiency



VSWR



Mounting Guide



- NOTES: 1. Suggested matching component pads.
 2. Antenna must be mounted on the edge of PCB.
 3. No copper allowed in designated area on all PCB layer -
 4. For more information please call TE.

Dimensions: mm
 Diagram is not to scale

Catalog:
 Revised

www.te.com
www.antenna.te.com

Dimensions are in inches and millimeters unless otherwise specified. Values in brackets are metric equivalents.

Dimensions are shown for reference purposes only. Specifications subject to change.

USA: 1-800-522-6752
 Canada: 1-905-475-6222
 Germany: +49 (0) 6251-133-1999

UK: +44 (0) 800-267666
 Netherlands: +31 (0) 73-6246-999
 China: +86 (0) 400-820-6015

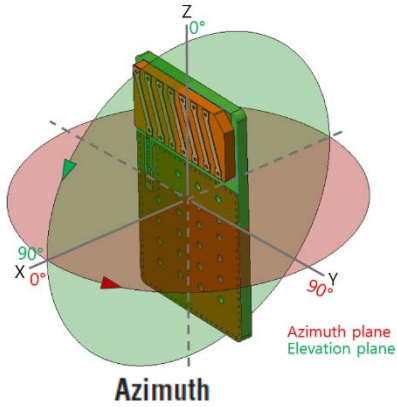
For other country numbers go to:

www.te.com/supportcenter

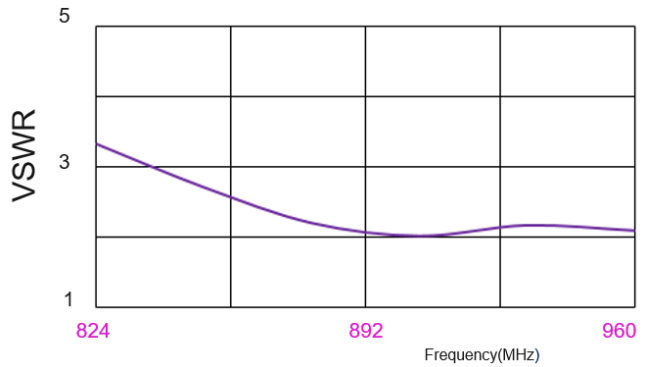
698–960 MHz Helical Antenna for IoT (includes frequencies of IoT solutions) (Continued)

824-960MHz

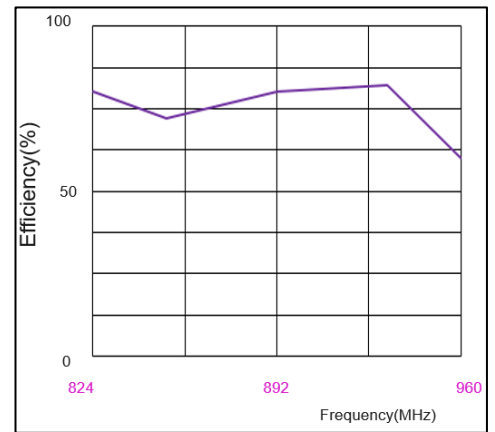
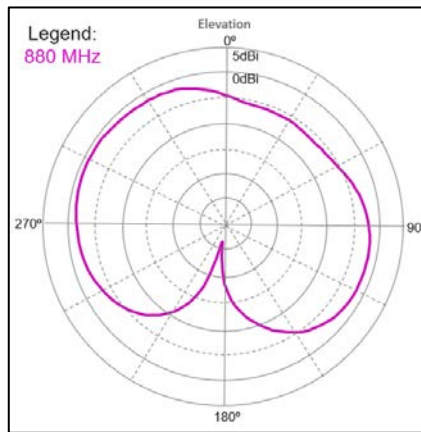
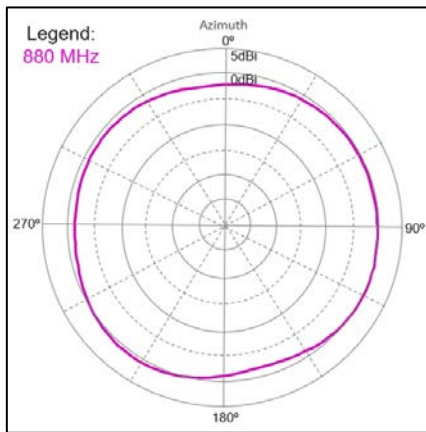
Test Orientation in Free Space



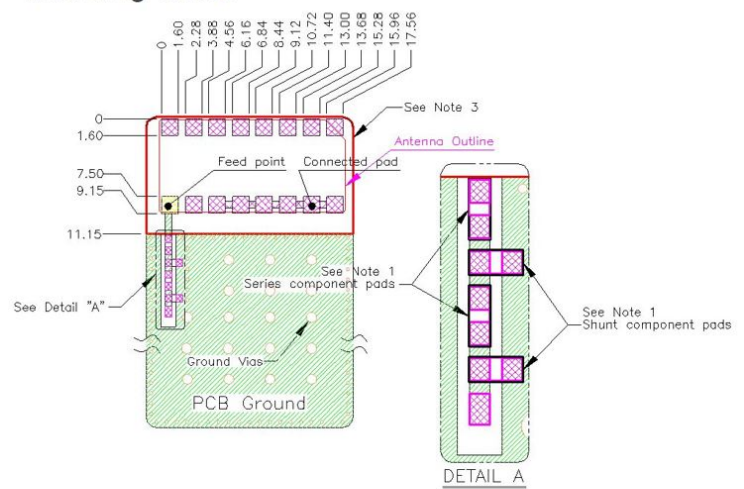
VSWR



824-960MHz



Mounting Guide



- NOTES: 1. Suggested matching component pads.
 2. Antenna must be mounted on the edge of PCB.
 3. No copper allowed in designated area on all PCB layer -
 4. For more information please call TE.

Dimensions: mm
 Diagram is not to scale

698–960 MHz Helical Antenna for IoT
 (includes frequencies of IoT solutions) (Continued)

PCB TEST Options



Catalog:
Revised

Dimensions are in inches and millimeters unless otherwise specified. Values in brackets are metric equivalents.

Dimensions are shown for reference purposes only. Specifications subject to change.

USA: 1-800-522-6752
 Canada: 1-905-475-6222
 Germany: +49 (0) 6251-133-1999

UK: +44 (0) 800-267666
 Netherlands: +31 (0) 73-6246-999
 China: +86 (0) 400-820-6015

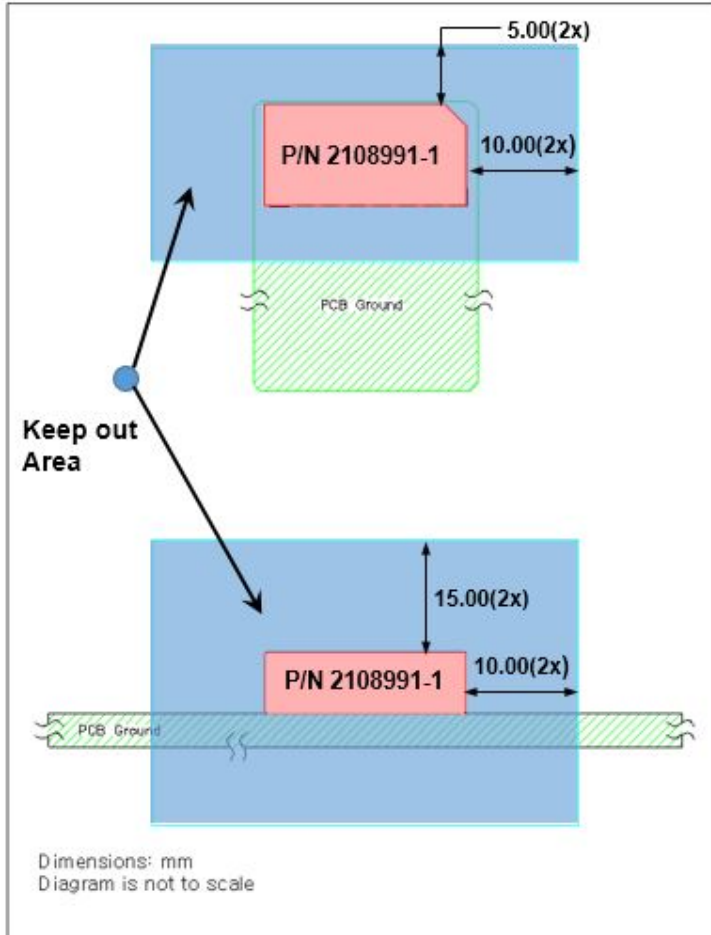
www.te.com
 www.antenna.te.com

For other country numbers go to:

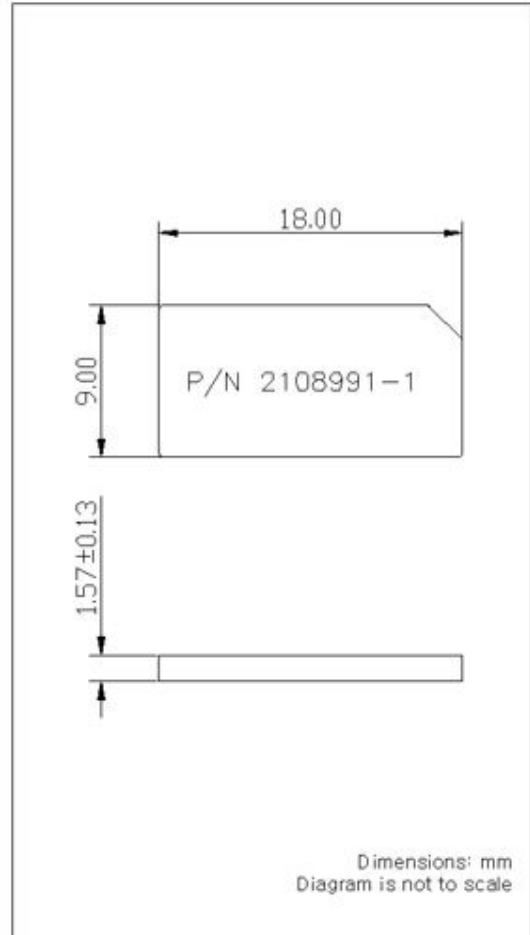
www.te.com/supportcenter

698–960 MHz Helical Antenna for IoT
 (includes frequencies of IoT solutions) (Continued)

Keep Out Area



Approx. Dimensions



- Note: In case keep out zone as recommended can't be guaranteed, contact TE for implementation service.

单击下面可查看定价，库存，交付和生命周期等信息

[>>TE Connectivity\(泰科\)](#)