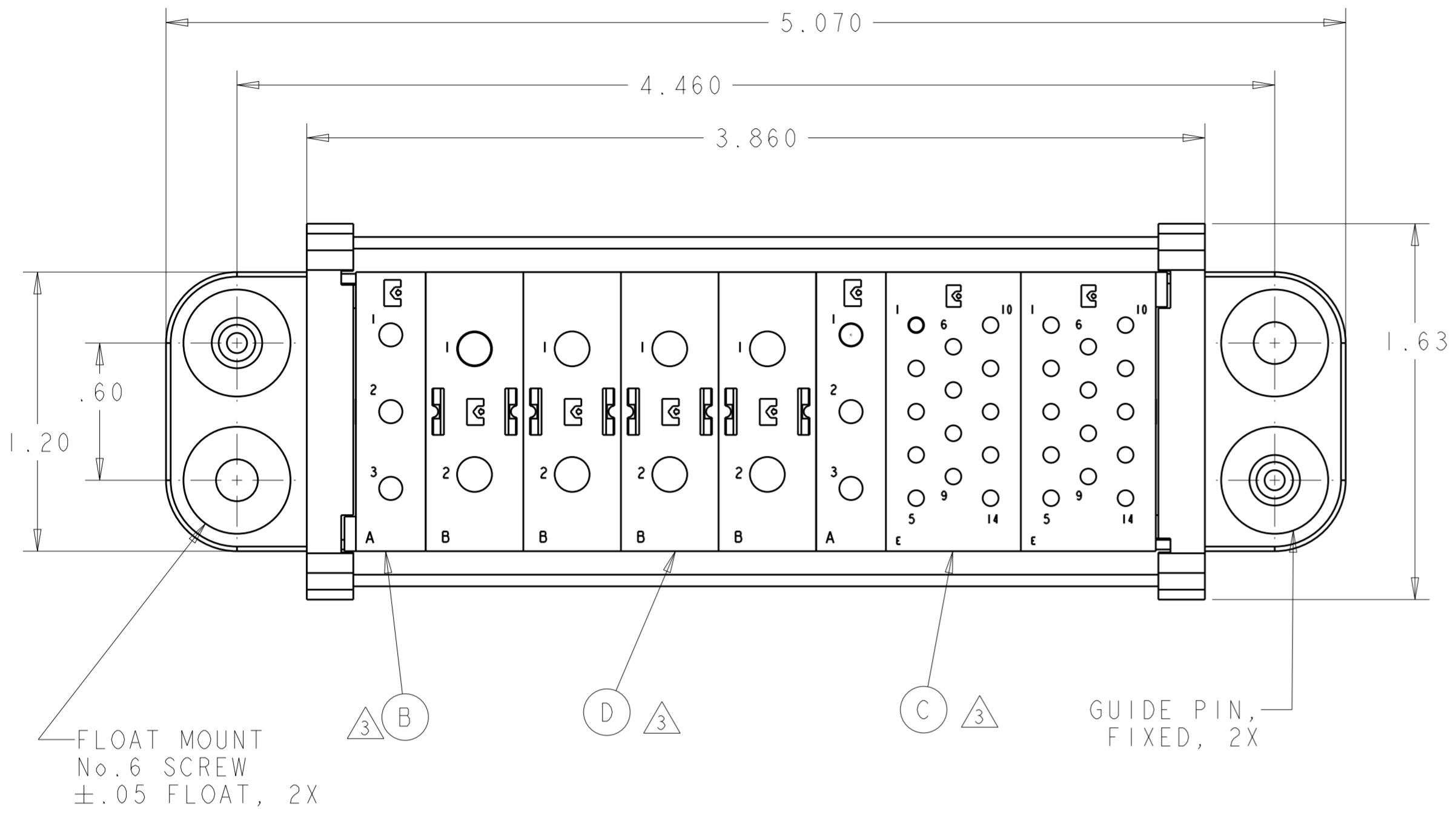


THIS DRAWING IS UNPUBLISHED. RELEASED FOR PUBLICATION 20
 © COPYRIGHT 20 BY - ALL RIGHTS RESERVED.

LOC	DIST	REVISIONS					
GP	00	P	LTR	DESCRIPTION	DATE	DWN	APVD
		D		REVISED PER ECO-12-017244	27SEP2012	KH	DO



1. PART NUMBER CHANGES AND/OR DESIGN CHANGES AFFECTING ITEM INTERCHANGEABILITY REQUIRE PRIOR TYCO ELECTRONICS APPROVAL AND AUTHORIZATION BY REVISION TO THIS DRAWING.

2. ITEMS PROVIDED TO THIS SPECIFICATION TO BE PERMANENTLY IDENTIFIED PER THE FOLLOWING IDENTIFIER:

TYCO ELECTRONICS P/N DATE CODE (e.g. 0212)
 XXXXXXXX-X XXXX

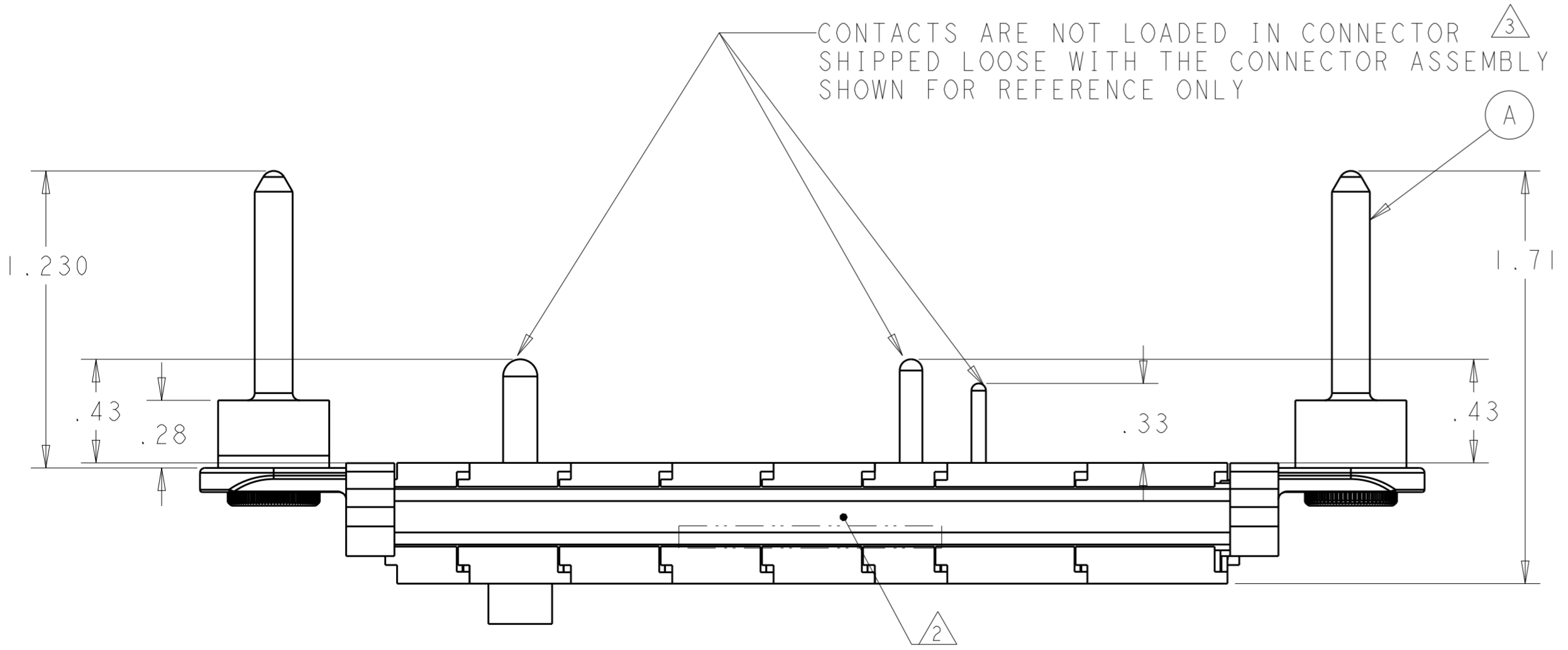
3. MODULES NOTED ARE FOR CRIMP REMOVABLE STYLE CONTACTS. ITEMS E, F AND G WILL BE PACKAGED AND SHIPPED LOOSE WITH THE CONNECTOR ASSEMBLY.

4. MOUNTING FLANGE BUSHING ACCEPTS 6/32 SCREW (.156 DIA. CLEARANCE HOLE, FLOAT MOUNT) OR 8/32 SCREW (.173 DIA. CLEARANCE HOLE, FIXED MOUNT), USER SUPPLIED.

5. CONNECTOR MATES WITH P/N 2085271-1 AND WITH ELCON EDS-10378.

6. CONNECTOR IS A REPLACEMENT FOR ELCON CONNECTOR 799-283 (EDP20378)

7. RAIL LENGTH OF (3.562)



8	1766192-1	PIN CONTACTS, CRIMP, SIZE No. 8	G
28	1766194-1	PIN CONTACTS, CRIMP, SIZE No. 16	F
6	1766193-1	PIN CONTACTS, CRIMP, SIZE No. 12	E
4	1648462-1	MODULE "B"	D
2	1648465-1	MODULE "E"	C
2	1648461-1	MODULE "A"	B
2	6648251-1	END CAP, FLOAT MOUNT	A
-1	PART NO.	DESCRIPTION	ITEM NO.

THIS DRAWING IS A CONTROLLED DOCUMENT.

DWN: R. GRZYBOWSKI 9 JULY 09
 CHK: D. ORRIS 9 JULY 09
 APVD: M. PERCHERKE 9 JULY 09

TE Connectivity

NAME: PIN CONNECTOR ASSEMBLY DOMINO W/PANEL CUT-OUT

SIZE: A2 CAGE CODE: 00779 DRAWING NO: C-2085270 RESTRICTED TO: -

MATERIAL: - DIMENSIONS: INCHES TOLERANCES UNLESS OTHERWISE SPECIFIED: 0 PLC ±, 1 PLC ±.25, 2 PLC ±.010, 3 PLC ±.010, 4 PLC ±. ANGLES FINISH ±.

WEIGHT: -

CUSTOMER DRAWING SCALE: 2:1 SHEET 1 OF 2 REV D

ELCON DOMINO

4

3

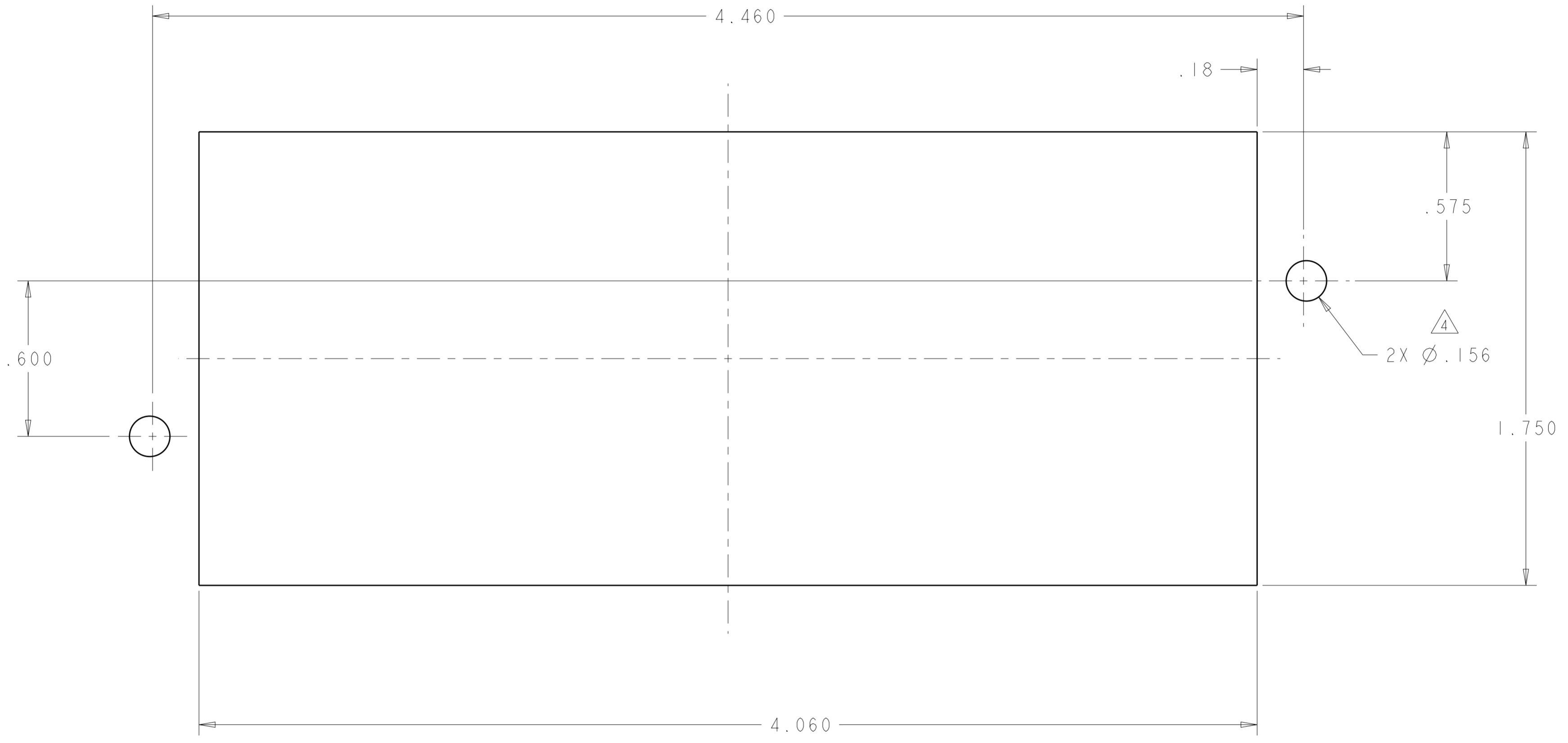
2

1

THIS DRAWING IS UNPUBLISHED. RELEASED FOR PUBLICATION 20
 © COPYRIGHT 20 BY - ALL RIGHTS RESERVED.

LOC GP DIST 00

REVISIONS				DATE	DWN	APVD
P	LTR	DESCRIPTION				
-		SEE SHEET 1	-	-	-	



PIN PANEL MOUNT CUTOUT
 COMPONENT SIDE

THIS DRAWING IS A CONTROLLED DOCUMENT.		DWN R. GRZYBOWSKI 9 JULY 09	STE TE Connectivity	
DIMENSIONS: INCHES		CHK D. ORRIS 9 JULY 09		
TOLERANCES UNLESS OTHERWISE SPECIFIED:		APVD M. PERCHERKE 9 JULY 09	NAME PIN CONNECTOR ASSEMBLY	
0 PLC ±-		PRODUCT SPEC	DOMINO	
1 PLC ±-		APPLICATION SPEC	W/PANEL CUT-OUT	
2 PLC ±.25		WEIGHT	SIZE A2	CAGE CODE C-2085270
3 PLC ±.010		CUSTOMER DRAWING	SCALE 2:1	SHEET 2 OF 2
4 PLC ±-			REV D	
ANGLES ±-				
FINISH				

单击下面可查看定价，库存，交付和生命周期等信息

[>>TE Connectivity\(泰科\)](#)