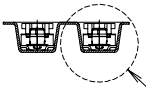
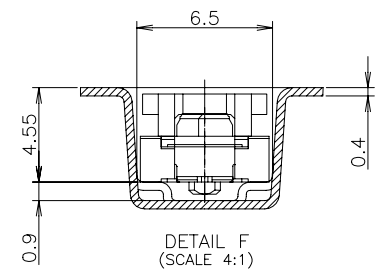
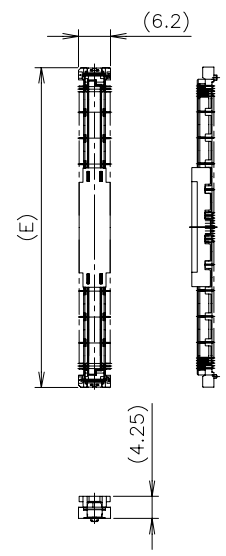
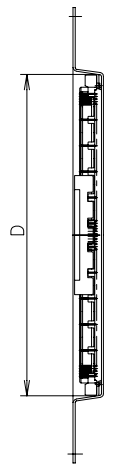
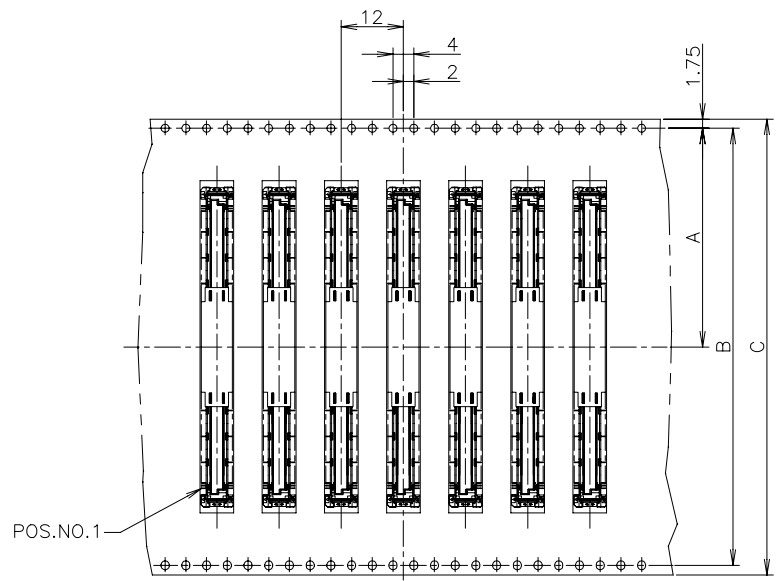


REVISIONS

| P  | LTR | DESCRIPTION                       | DATE      | DWN | APVD |
|----|-----|-----------------------------------|-----------|-----|------|
| C1 |     | ECN-21-114380:ADD MATED CONDITION | 31AUG2021 | A.L | H.L  |

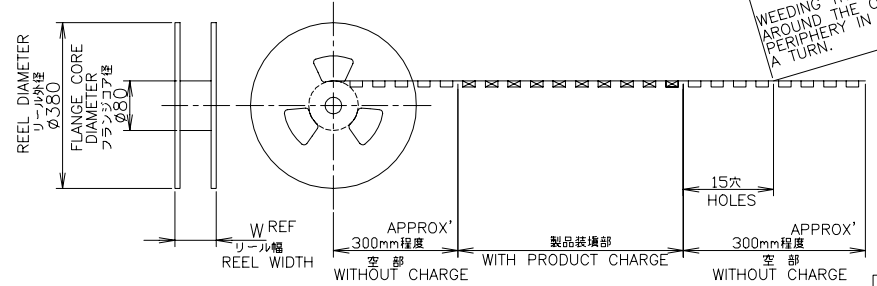
リール引出し方向  
DIRECTION OFF TOP OF REEL



SEE DETAIL F

カバーテープ  
リッター部  
外周一巻  
WEEDING THE COVER TAPE  
AROUND THE OUTER  
PERIPHERY IN  
A TURN.

CONNECTOR DETAIL



|         |     |      |      |      |      |    |      |      |    |      |       |      |           |              |
|---------|-----|------|------|------|------|----|------|------|----|------|-------|------|-----------|--------------|
| NO      | 950 | 59.5 | 57.7 | 57.1 | 54.5 | 95 | 61.8 | 62.1 | 88 | 84.4 | 42.25 | 220  | BLACK     | △3-2040714-7 |
| NO      | 950 | 59.5 | 57.7 | 57.1 | 54.5 | 95 | 61.8 | 62.1 | 88 | 84.4 | 42.25 | 220  | BLACK     | △3-2040714-6 |
| SEALANT | QTY | T    | S    | P    | N    | W  | E    | D    | C  | B    | A     | POS. | HSG COLOR | PART NO.     |

THIS DRAWING IS A CONTROLLED DOCUMENT.

DWN Y.NAKAZAWA 12MAR2008  
CHK T.FUTATSUGI 12MAR2008  
APVD T.FUTATSUGI 12MAR2008

TE Connectivity Ltd.

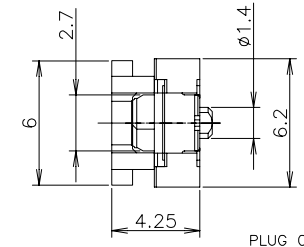
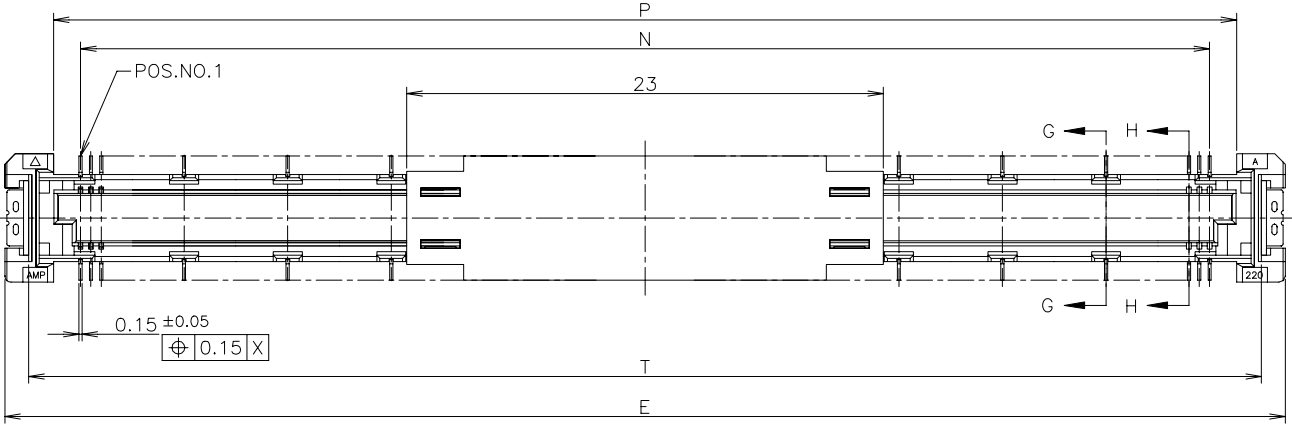
NAME 名称 A  
FH 0.5BTB CONNECTOR 220 POS  
REC 4H WITH G-CONT. AND CAP

PRODUCT SPEC 製品規格 108-5560  
APPLICATION SPEC 取付適用規格

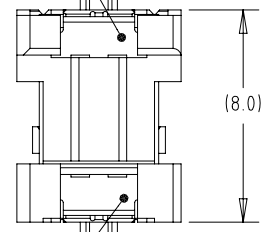
SIZE A3 CAGE CODE 00779 DRAWING NO. 番号 G=2040714 RESTRICTED TO

MATERIAL 材料 FINISH 仕上 WEIGHT CUSTOMER DRAWING SCALE 尺度 1:1 SHEET 1 OF 3 REV C1

| REVISIONS |     |             |      |     |      |
|-----------|-----|-------------|------|-----|------|
| 變更        |     |             |      |     |      |
| P         | LTR | DESCRIPTION | DATE | DWN | APVD |
| -         | -   | SEE SHEET 1 | -    | -   | -    |

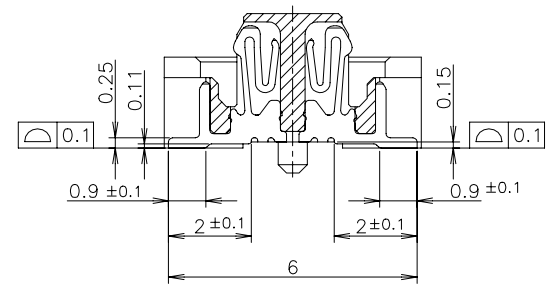
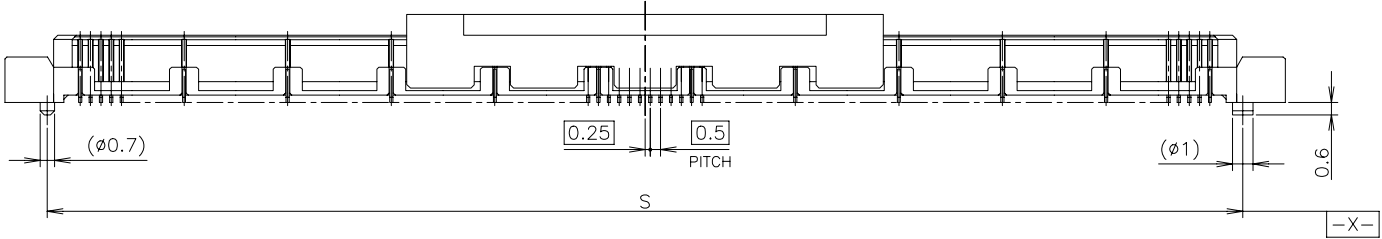


PLUG CONNECTOR  
P/N: \*-2040713-\*

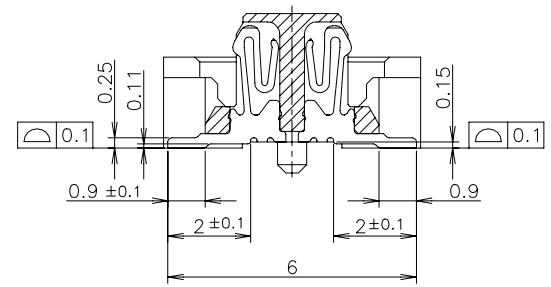


REC CONNECTOR  
P/N: \*-2040714-\*

Ⓢ FULL-MATED CONDITION



G-G  
(GROUND POSITION)  
(SCALE 8:1)

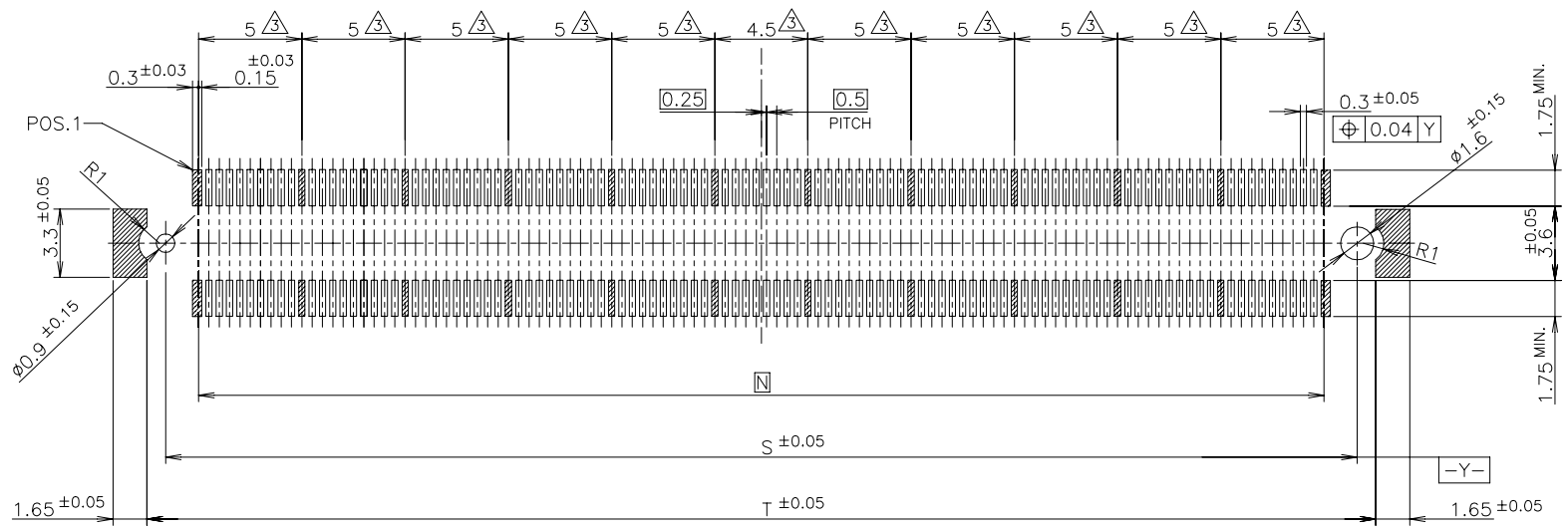


H-H  
(SIGNAL POSITION)  
(SCALE 8:1)

- ⚠ MATERIAL; HOUSING: HIGH TEMP THERMO PLASTIC UL94V-0  
CONTACT: COPPER ALLOY  
SOLDER PEG: COPPER ALLOY
- ⚠ FINISH ; SIGNAL CONTACT: UNDER PL Ni 0.0013mm MIN ALL OVER.  
CONTACT AREA 0.00076mm MIN Au PL.  
SOLDERING AREA 0.00005mm MIN Au PL.  
GROUND CONTACT: UNDER PL Ni 0.0013mm MIN ALL OVER.  
CONTACT AREA 0.00076mm MIN Au PL.  
SOLDERING AREA 0.00005mm MIN Au PL.  
SOLDER PEG: 0.001mm MIN TIN PL. OVER  
0.0013mm MIN Ni PL ALL OVER.
- ⚠ THIS POSITION IS GROUND CIRCUIT.
- ⚠ FINISH ; SIGNAL CONTACT: UNDER PL Ni 0.0013mm MIN ALL OVER.  
CONTACT AREA 0.0002mm MIN Au PL.  
SOLDERING AREA 0.00005mm MIN Au PL.  
GROUND CONTACT: UNDER PL Ni 0.0013mm MIN ALL OVER.  
CONTACT AREA 0.0002mm MIN Au PL.  
SOLDERING AREA 0.00005mm MIN Au PL.  
SOLDER PEG: 0.001mm MIN TIN PL. OVER  
0.0013mm MIN Ni PL ALL OVER.

|  |              |                            |  |           |
|--|--------------|----------------------------|--|-----------|
| THIS DRAWING IS A CONTROLLED DOCUMENT.         |              | DWN                        | <b>TE</b> TE Connectivity Ltd.                             |           |
| DIMENSIONS:<br>單位: 耗<br>mm                     |              | CHK                        |  |           |
| TOLERANCES UNLESS OTHERWISE SPECIFIED:<br>一般公差 |              | APVD                       | NAME<br>名稱   |           |
| 0 PLC ± 0.3                                    |              | PRODUCT SPEC<br>製品規格       | EMBOSS ASSY  |           |
| 1 PLC ± 0.3                                    |              | APPLICATION SPEC<br>取付適用規格 | FH 0.5BTB CONNECTOR 220 POS<br>REC 4H WITH G-CONT. AND CAP |           |
| 2 PLC ± 0.3                                    |              | WEIGHT                     | SIZE   | CAGE CODE |
| 3 PLC ± 0.3                                    |              | CUSTOMER DRAWING           | A3   | 00779     |
| 4 PLC ± 0.3                                    |              |                            | DRAWING NO<br>番號   | G=2040714 |
| ANGLES ± 3°                                    |              | RESTRICTED TO              |  |           |
| MATERIAL<br>材料                                 | FINISH<br>仕上 | SCALE<br>尺度 4:1            |  |           |
|  |              | SHEET<br>2 OF 3            |  | REV<br>C1 |

| REVISIONS |     |             |      |     |      |
|-----------|-----|-------------|------|-----|------|
| P         | LTR | DESCRIPTION | DATE | DWN | APVD |
| -         | -   | SEE SHEET 1 | -    | -   | -    |



REFERENCE P.C. BOARD LAYOUT

|   |  |                            |   |                         |
|---|--|----------------------------|---|-------------------------|
| THIS DRAWING IS A CONTROLLED DOCUMENT.  |  | DWN                        | <b>TE</b> TE Connectivity Ltd.  |                         |
| DIMENSIONS:<br>單位: 耗<br>mm  |  | CHK                        |   |                         |
| TOLERANCES UNLESS OTHERWISE SPECIFIED:<br>一般公差  |  | APVD                       | NAME<br>名稱  |                         |
| 0 PLC ± 0.3<br>1 PLC ± 0.3<br>2 PLC ± 0.3<br>3 PLC ± 0.3<br>4 PLC ± 0.3<br>4 PLG ANGLES ± 0.3 |  | PRODUCT SPEC<br>製品規格       | EMBOSS ASSY<br>FH 0.5BTB CONNECTOR 220 POS<br>REC 4H WITH G-CONT. AND CAP |                         |
| MATERIAL<br>材料  |  | APPLICATION SPEC<br>取付適用規格 | SIZE<br>A3  | RESTRICTED TO           |
| FINISH<br>仕上  |  | WEIGHT                     | CAGE CODE<br>00779  | DRAWING NO<br>G=2040714 |
|   |  | CUSTOMER DRAWING           | SCALE<br>尺度 4:1   | SHEET<br>3 OF 3         |
|   |  |                            |   | REV<br>C1               |

单击下面可查看定价，库存，交付和生命周期等信息

[>>TE Connectivity\(泰科\)](#)