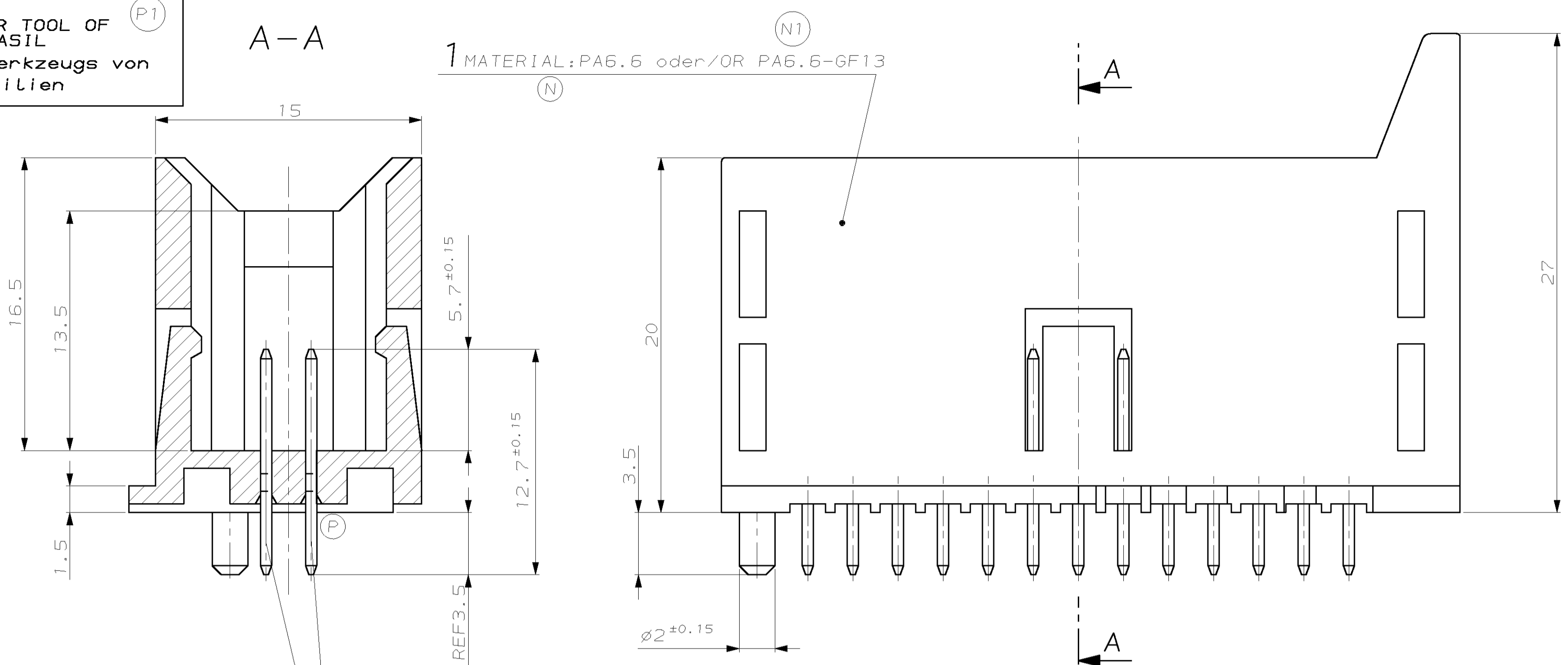
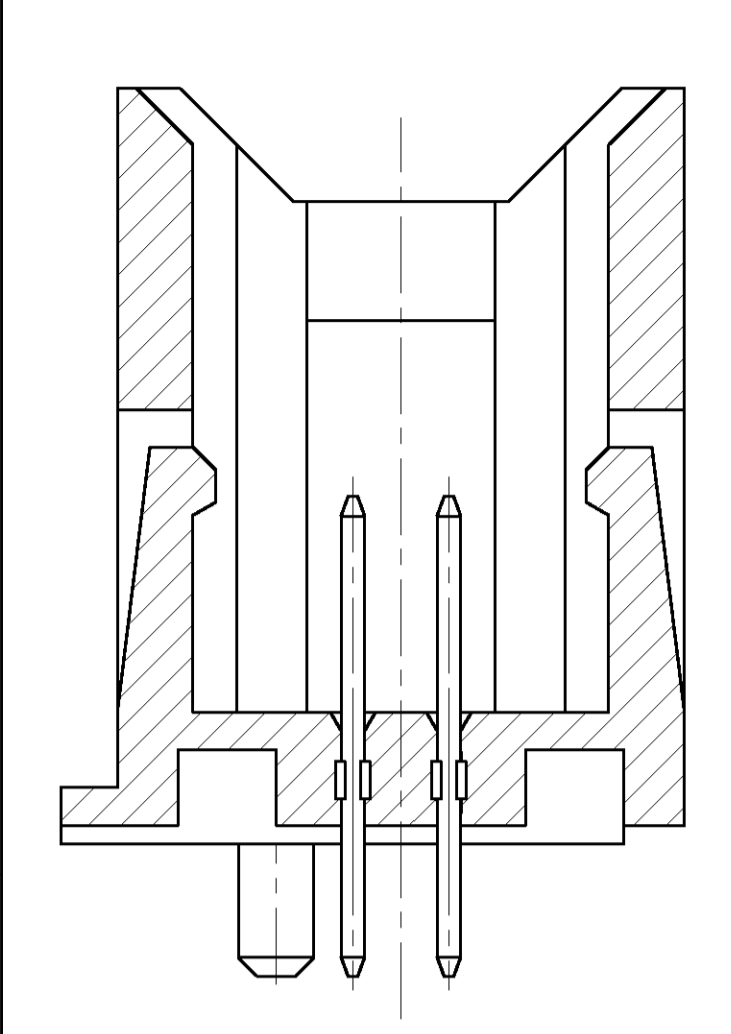


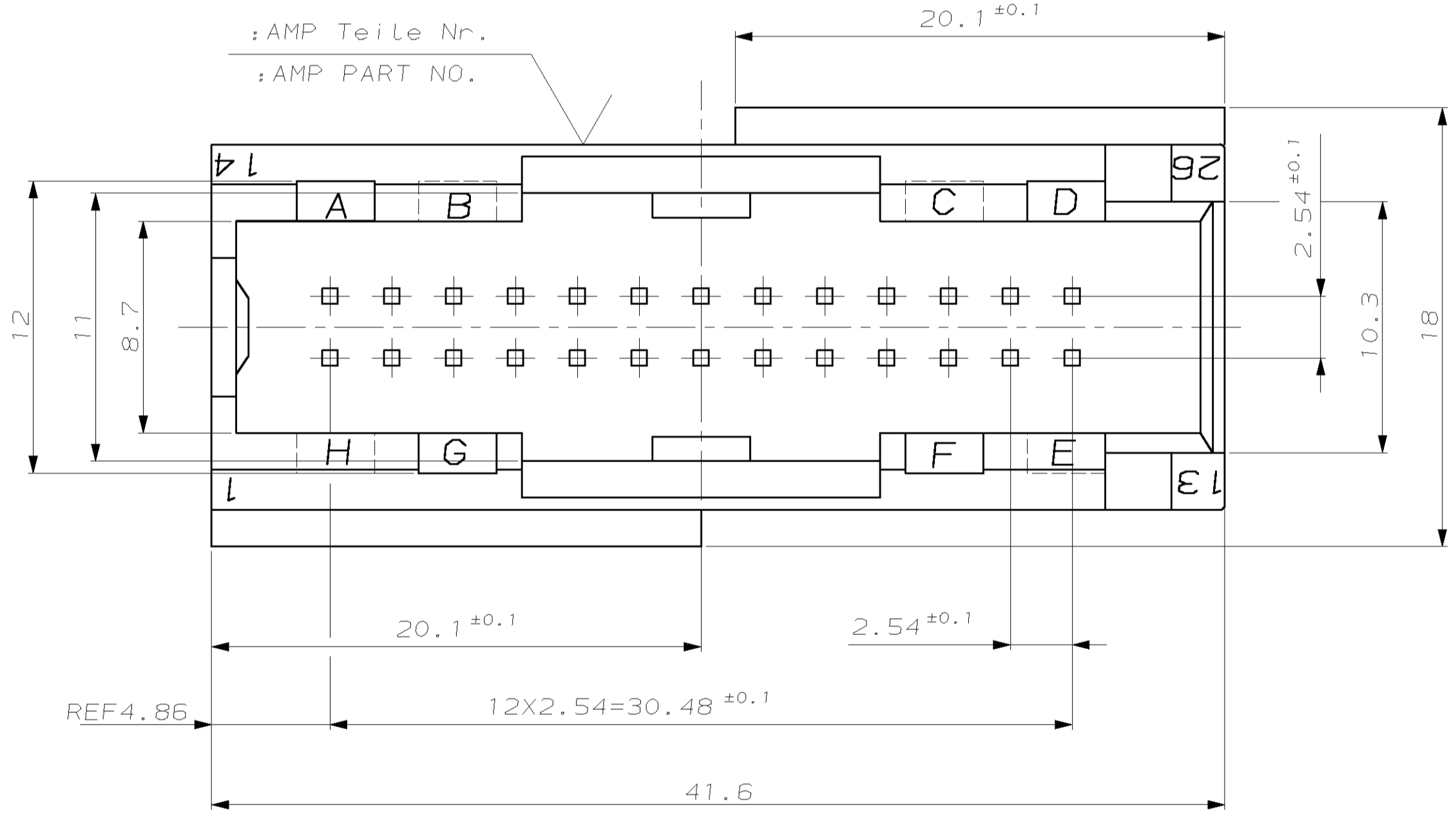
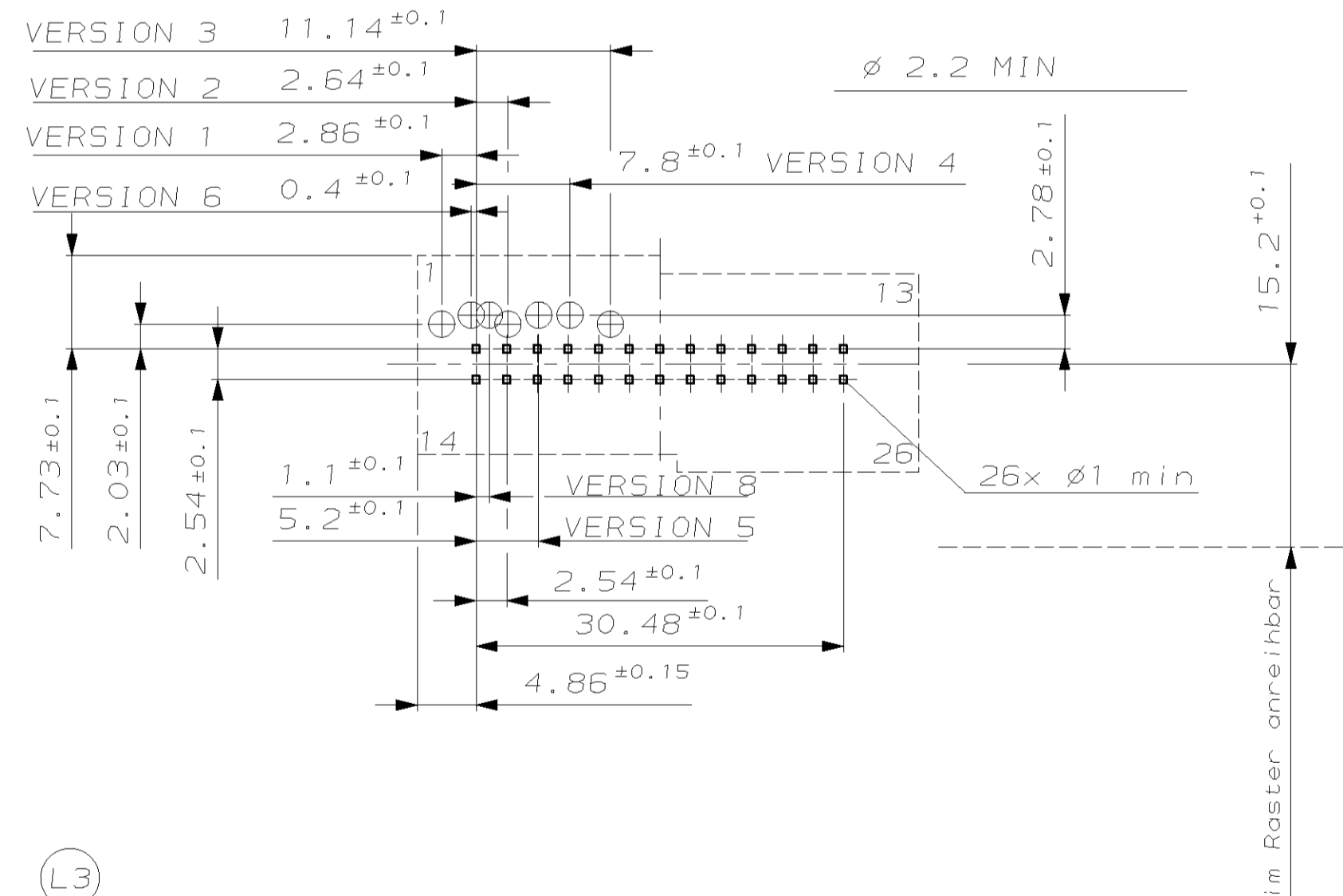
REV. NO.	DATE	DESCRIPTION	BY	APP'D
L1	18.02.97	Zeichnung grundl. geänd. / DWG. CHANGED BASICALLY	C. Beu	J. Hahn
L2	29.10.97	BMW Daten entfallen / BMW DATES DELETED	C. Beu	J. Hahn
L3	11.12.97	Bemerk. 3 hinzu / NOTE 3 ADDED	C. Beu	J. Hahn
M	18.03.98	Farbe gelb war bordeauxviolett	C. Beu	J. Hahn
N	12.05.98	Material geändert / MAT. CHANGED	C. Beu	J. Hahn
N1	18.02.02	EGAO 0529 02 (MAT. PA6.6-6GF13 ADDED)	C. Beu	TS
P	17.11.03	EGAO 0819 03	C. Beu	TS
P1	07.05.04	EGAO 1089 04	C. Beu	TS

OPTIONAL ACHIEVEMENT FOR TOOL OF
 tyco/ELECTRONICS BRASIL
 Optionale Ausführung des Werkzeugs von
 tyco/ELECTRONICS Brasilien

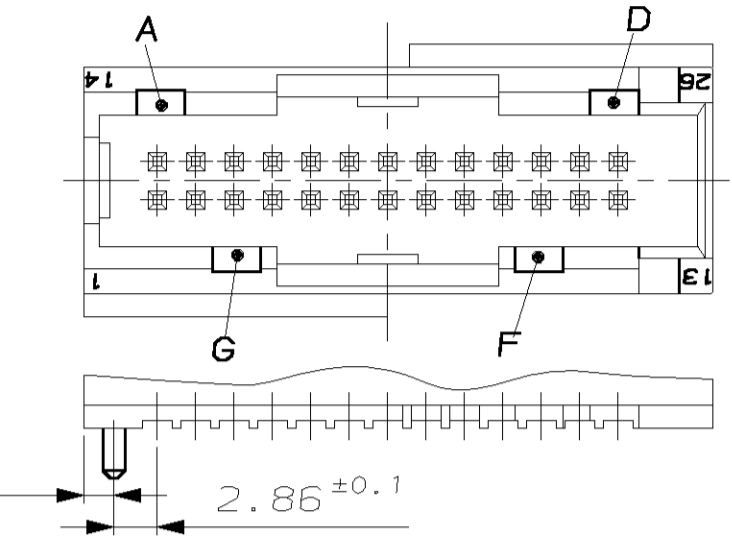


Leiterplatten-Lochbild
 (von Lötseite aus)
 Bohr-Ø-Empfehlung
 2:1

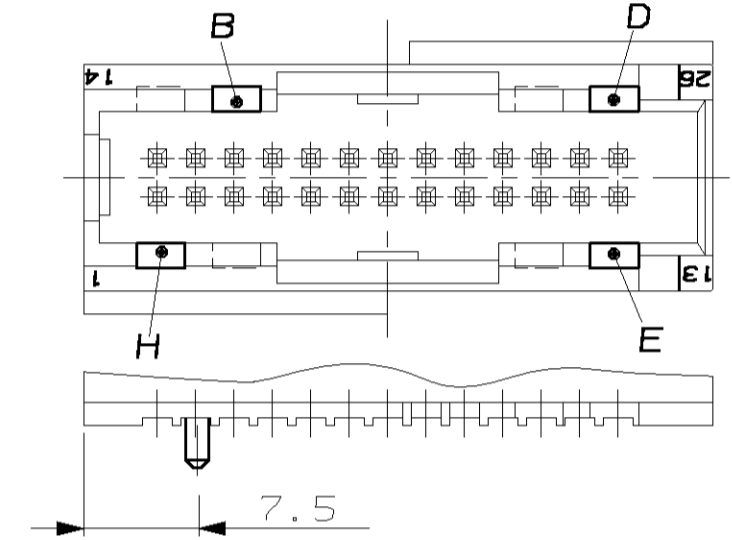
PCB-LAYOUT



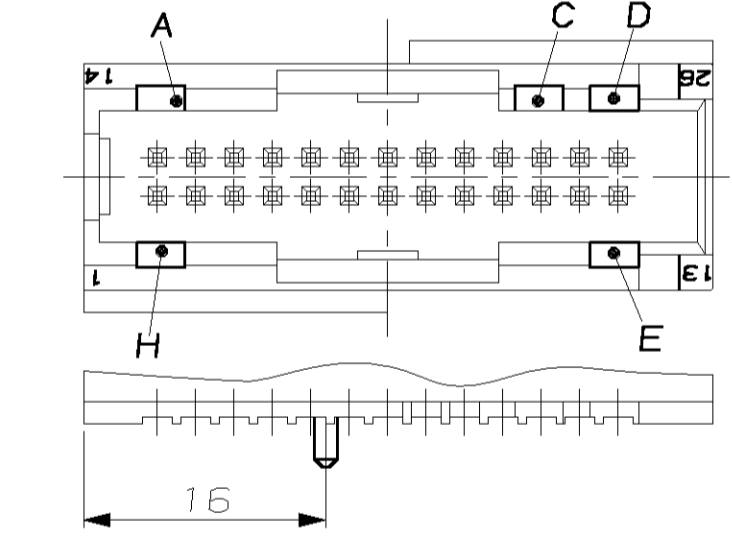
VERSION 1
 827881-1
 A-F-G-D



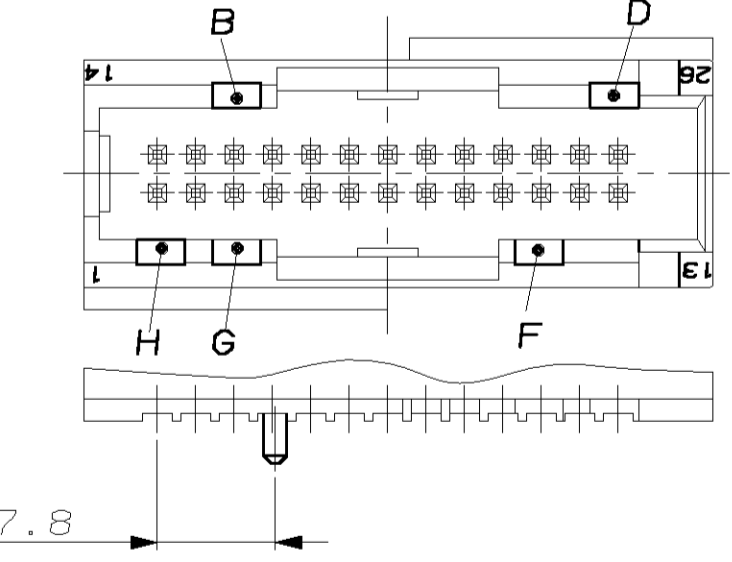
VERSION 2
 827881-2
 B-E-H-D



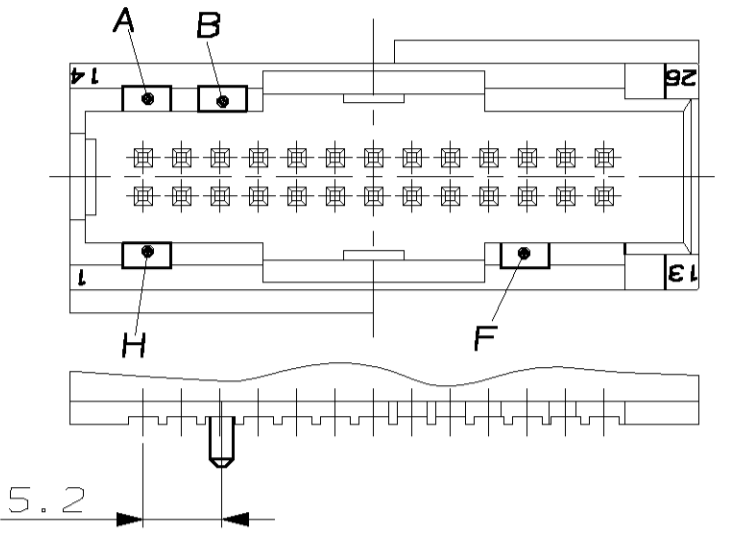
VERSION 3
 827881-3
 A-D-H-C-E



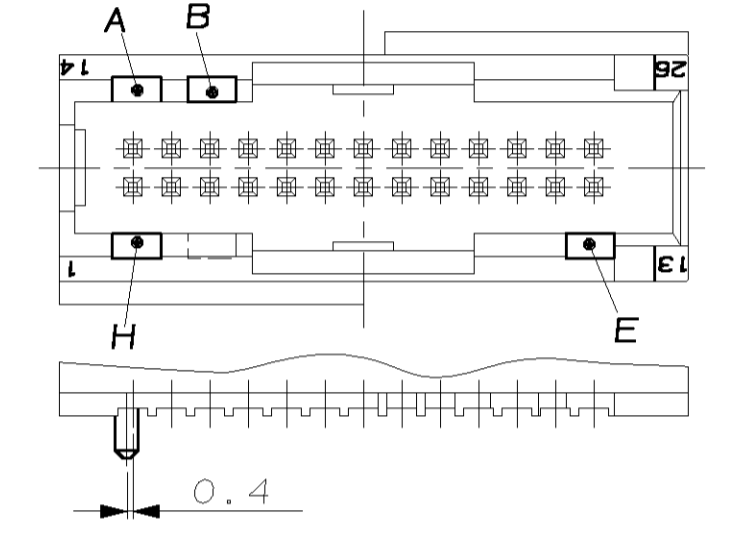
VERSION 4
 827881-4
 B-D-F-G-H



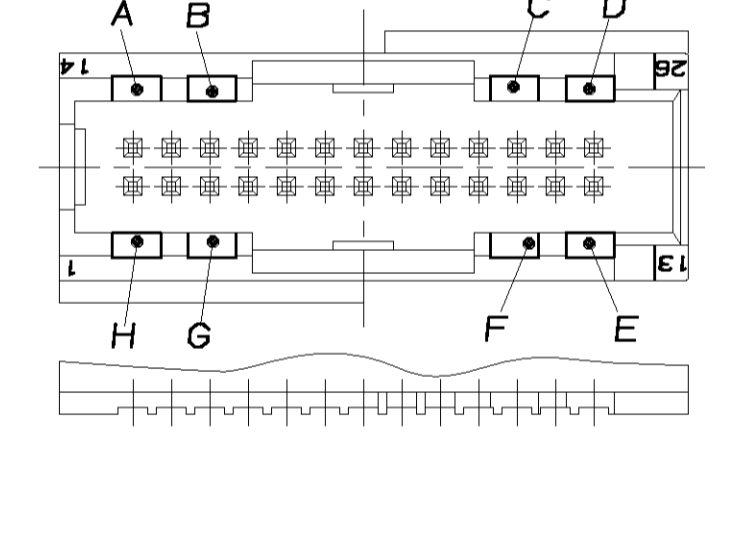
VERSION 5
 827881-5
 A-B-F-H



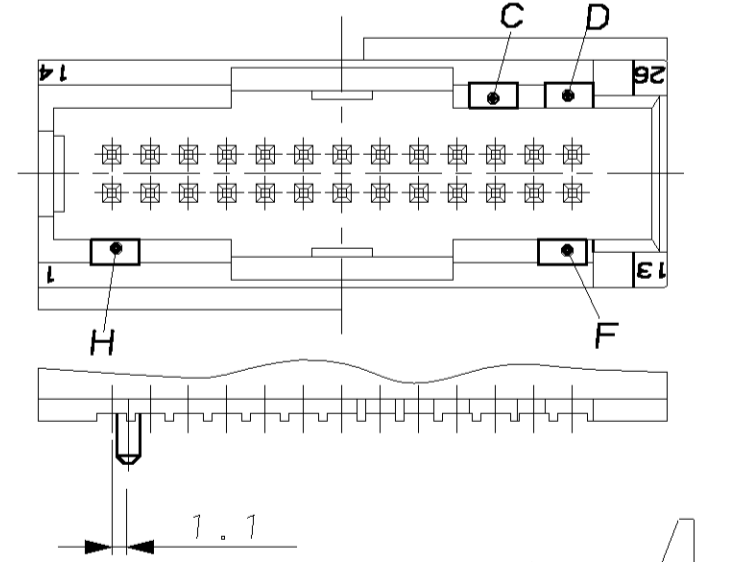
VERSION 6
 827881-6
 A-B-H-E



VERSION 7
 827881-7
 A-B-C-D-E-F-G-H



VERSION 8
 827881-8
 C-D-E-H



Bemerkungen:
 NOTES:

- Nur der deutsche Text ist bindend
 ONLY THE GERMAN-LANGUAGE VERSION
 SHALL BE BINDING
 - Stiftpositionslehre AMP Nr. 90-244-207-1
 TRUE POSITION GAUGE
- 3 Verpackung in Produktträger 740961-1
 in Siemens-KLT 9-740971-1
 PACKAGING IN TRAY 740961-1
 IN SIEMENS-KLT 9-740971-1
- 1 wie gezeichnet
 AS SHOWN

ART. GRAMM KIND GEWICHT WEIGHT	POS.	STK. QTY.	BENENNUNG DESCRIPTION	OBERFLÄCHE SURFACE FARBE/COLOUR	ART. GRAMM KIND GEWICHT WEIGHT	Passend zu: Abdeckkappe SUITABLE FOR: SHIELD
-	-	-	-	-	-	-
-	-	-	-	-	-	-
-	26	1	Stiftkontakt/MODU II PIN	verzinkt TIN PLATED	-	927689-8
-	1	1	Stiftwanne/PIN HEADER	rot/RED	-	927689-7
-	26	1	Stiftkontakt/MODU II PIN	verzinkt TIN PLATED	-	927689-6
-	1	1	Stiftwanne/PIN HEADER	LiLo/LILAC	-	927689-5
-	26	1	Stiftkontakt/MODU II PIN	verzinkt TIN PLATED	-	927689-4
-	1	1	Stiftwanne/PIN HEADER	schwarz/BLACK	-	927689-3
-	26	1	Stiftkontakt/MODU II PIN	verzinkt TIN PLATED	-	927689-2
-	1	1	Stiftwanne/PIN HEADER	brown/BROWN	-	927689-1
-	26	1	Stiftkontakt/MODU II PIN	verzinkt TIN PLATED	S 7.0	-
-	1	1	Stiftwanne/PIN HEADER	grün/GREEN	-	-
-	26	1	Stiftkontakt/MODU II PIN	verzinkt TIN PLATED	-	-
-	1	1	Stiftwanne/PIN HEADER	blau/BLUE	-	-
-	26	1	Stiftkontakt/MODU II PIN	verzinkt TIN PLATED	-	-
-	1	1	Stiftwanne/PIN HEADER	rotur/NATURAL	-	-
-	26	1	Stiftkontakt/MODU II PIN	verzinkt TIN PLATED	-	-
-	1	1	Stiftwanne/PIN HEADER	gelb/YELLOW	-	-

OBERFLÄCHE/SURFACE
 Ausführung Sn: Schichtdicke 2 bis 4 µm Sn über 1.3 bis 2.2 µm Ni
 STYLE: COAT THICKNESS... UNTIL... OVER... UNTIL...

AMP Deutschland GmbH
 D - 63225 Langen

MODU II, Stiftwanne, 26-polig
 MODU II, PIN HEADER, 26 POS.

AMP 00779-827881

Customer Drawing

单击下面可查看定价，库存，交付和生命周期等信息

[>>TE Connectivity\(泰科\)](#)