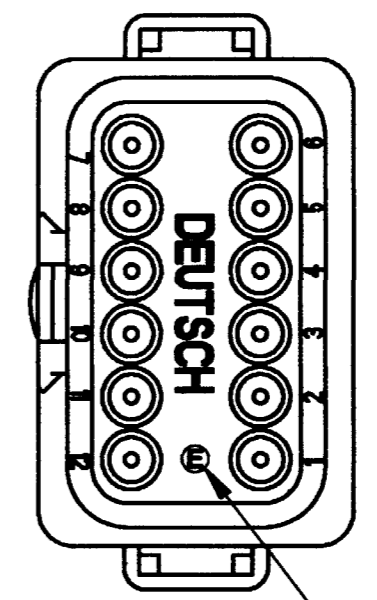
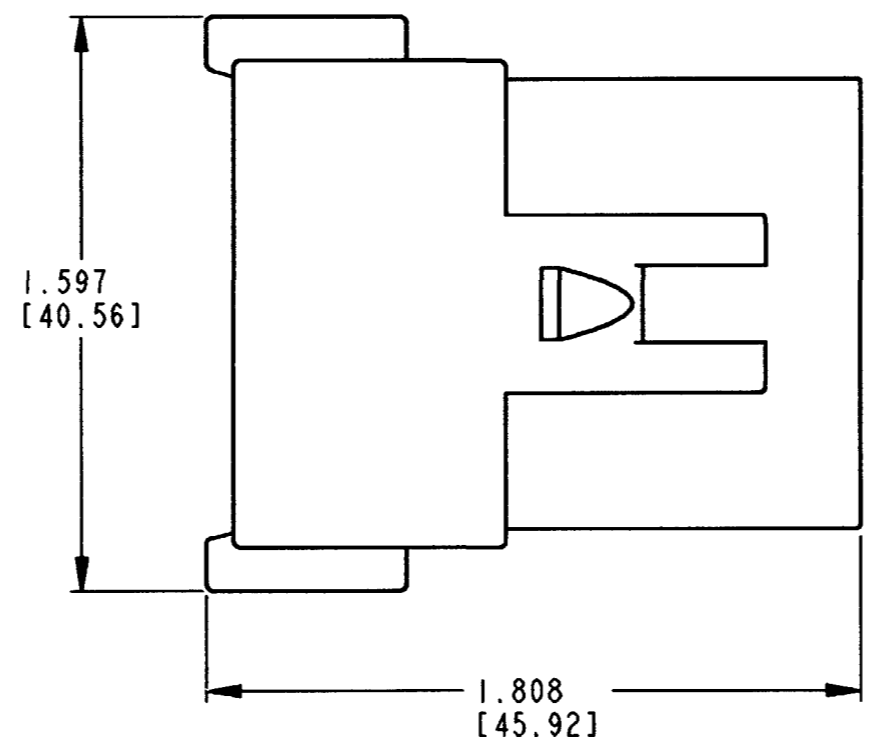
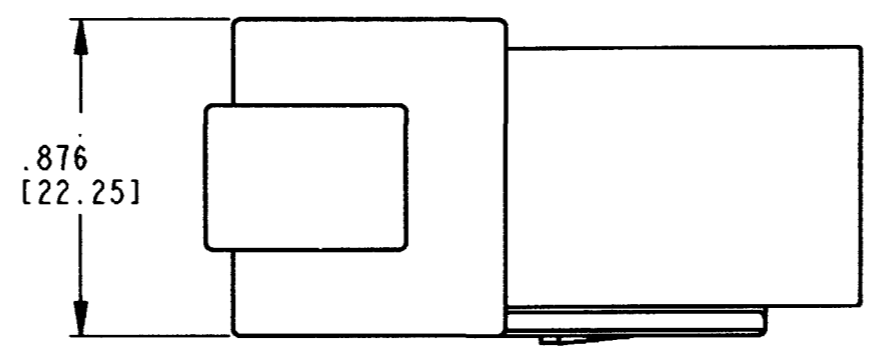


REV
NC DT04-12P*-C015

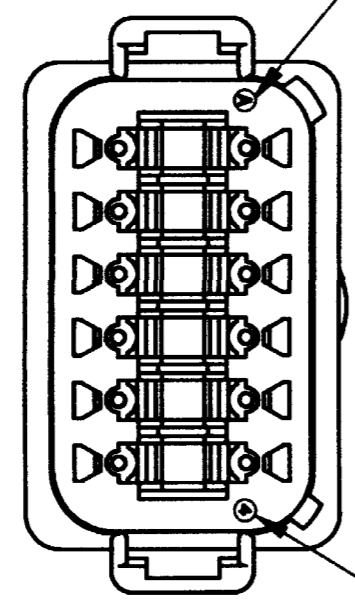
REVISIONS			
SYM	DESCRIPTION	DATE	APPROVED
NC	NEW RELEASE/REPLACES PREVIOUS RELEASE PER E.O. P18766	2-21-05	RD



-E- SYMBOL DESIGNATES
REDUCED WIRE SEAL

CONTACT SIZE	MIN. INSUL O.D.	MAX. INSUL O.D.	WIRE RANGE [mm ²]
16	.053 [1.35]	.120 [3.05]	14-20 AWG [2.0-0.5]

DATE CODE: MONTH IS REPRESENTED BY SEQUENTIAL ALPHA CHARACTERS.
EX. A = JANUARY



DATE CODE: YEAR IS REPRESENTED BY LAST NUMERICAL DIGIT.
EX: 4 = 2004

4. THIS RECEPTACLE MATES WITH THE DT06-12S*-**** PLUG (**** = ALL MODIFICATIONS). CONSULT FACTORY FOR MODIFICATIONS.
3. FOR CONTACTS AND WIRE PERFORMANCE AND APPLICATION CHARACTERISTICS SEE ENVELOPE DRAWING 0425-015-0000 AND 0425-017-0000.
2. DIMENSIONS ARE ±.025 [.64] UNLESS OTHERWISE SPECIFIED.
1. DIMENSIONS ARE IN INCHES [MILLIMETERS].
- NOTES:

SIGNATURE & DATE	
DR	X. SANCHEZ 04FEB05
CHK	R. M... 2/18/05
PE	[Signature]
APPD	S. Bend 2-15-05
SCALE	NONE
WT	

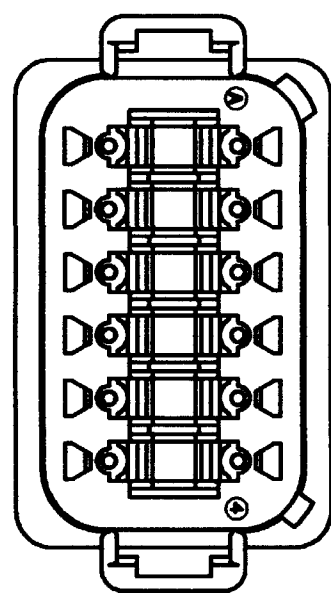
12 WAY RECEPTACLE
-C015 MOD.
D.T. SERIES

ENVELOPE

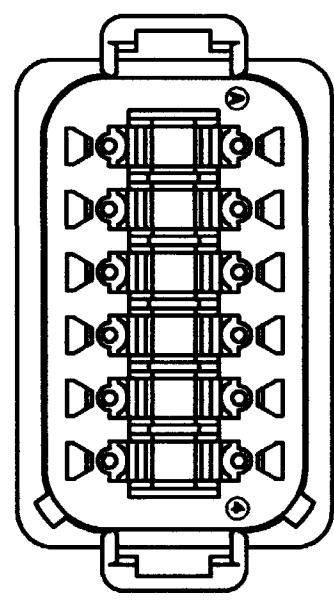
CP	MATL. CODE
The Deutsch Company DEUTSCH I.P.D. 3850 INDUSTRIAL AVE. HEMET, CALIF. 92545	
B	DT04-12P*-C015
DWG SIZE	CODE 11139 SHEET 1 OF 2

REV NC	DT04-12P*-C015	REVISIONS		
SYM	DESCRIPTION	DATE	APPROVED	
NC	NEW RELEASE/REPLACES PREVIOUS RELEASE PER E.O. P18766			
		2-21-05	RDR	

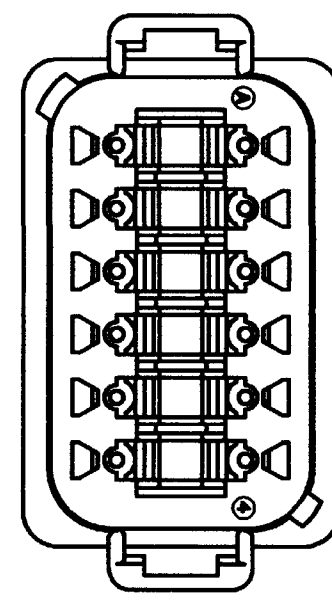
PART NO.
DT04-12PA-C015
KEY ARR. -A-
COLOR: GRAY



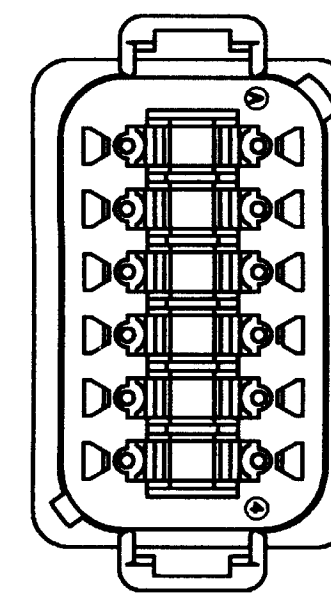
PART NO.
DT04-12PB-C015
KEY ARR. -B-
COLOR: BLACK



PART NO.
DT04-12PC-C015
KEY ARR. -C-
COLOR: GREEN



PART NO.
DT04-12PD-C015
KEY ARR. -D-
COLOR: BROWN



NOTES:

SIGNATURE & DATE		12 WAY RECEPTACLE -C015 MOD. D.T. SERIES	CP	MATL. CODE
DR	X. SANCHEZ 04FEB05		The Deutsch Company	
CHK	R. Morgan 2/16/05		DEUTSCH I. P. D. 3850 INDUSTRIAL AVE. HEMET, CALIF. 92545	
PE	Steve Johnson 2/16/05		B	DT04-12P*-C015
APPD	S. Bland 2-15-05		DWG SIZE	CODE 11139
SCALE	NONE	WT	SHEET 2 OF 2	

ENVELOPE

单击下面可查看定价，库存，交付和生命周期等信息

[>>TE Connectivity\(泰科\)](#)