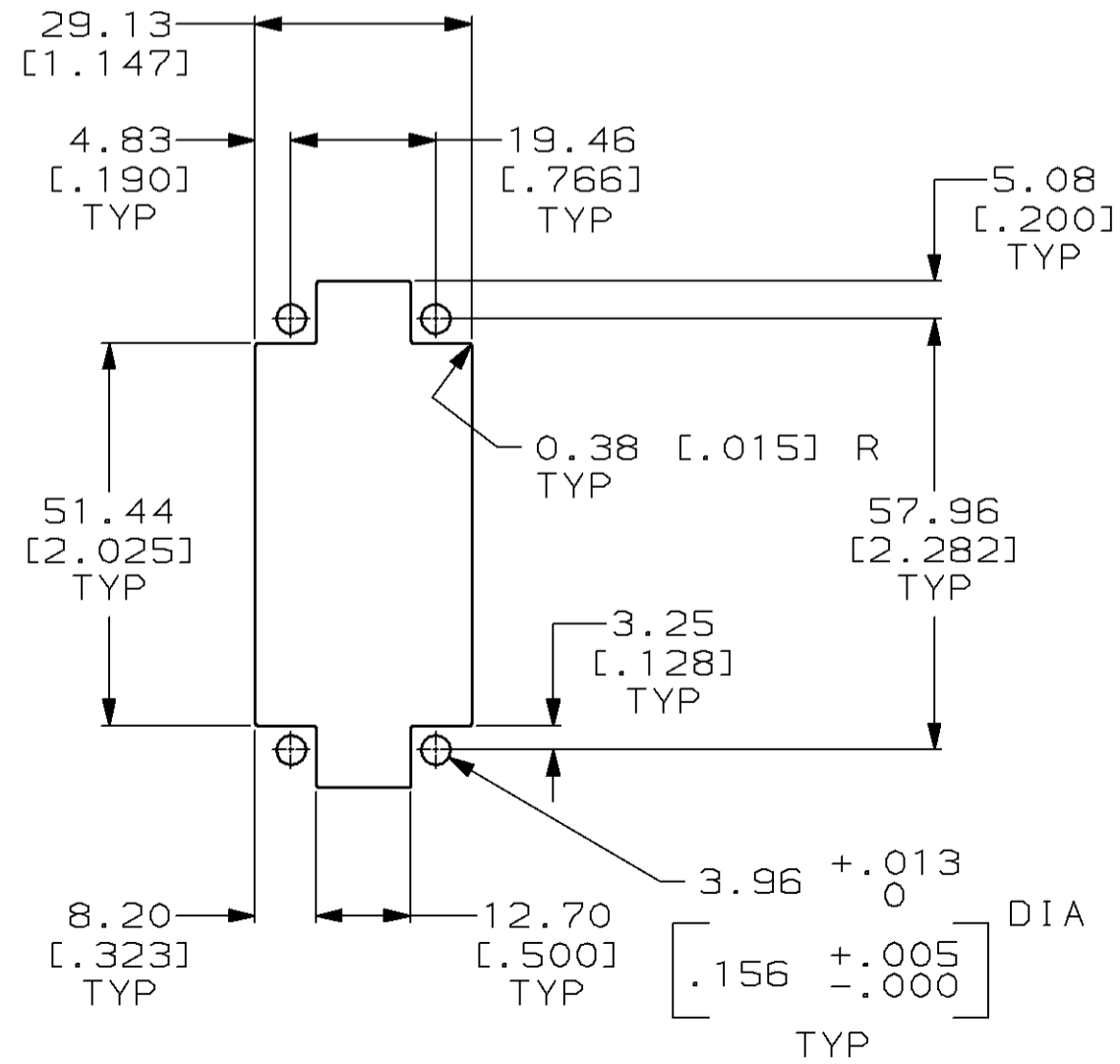
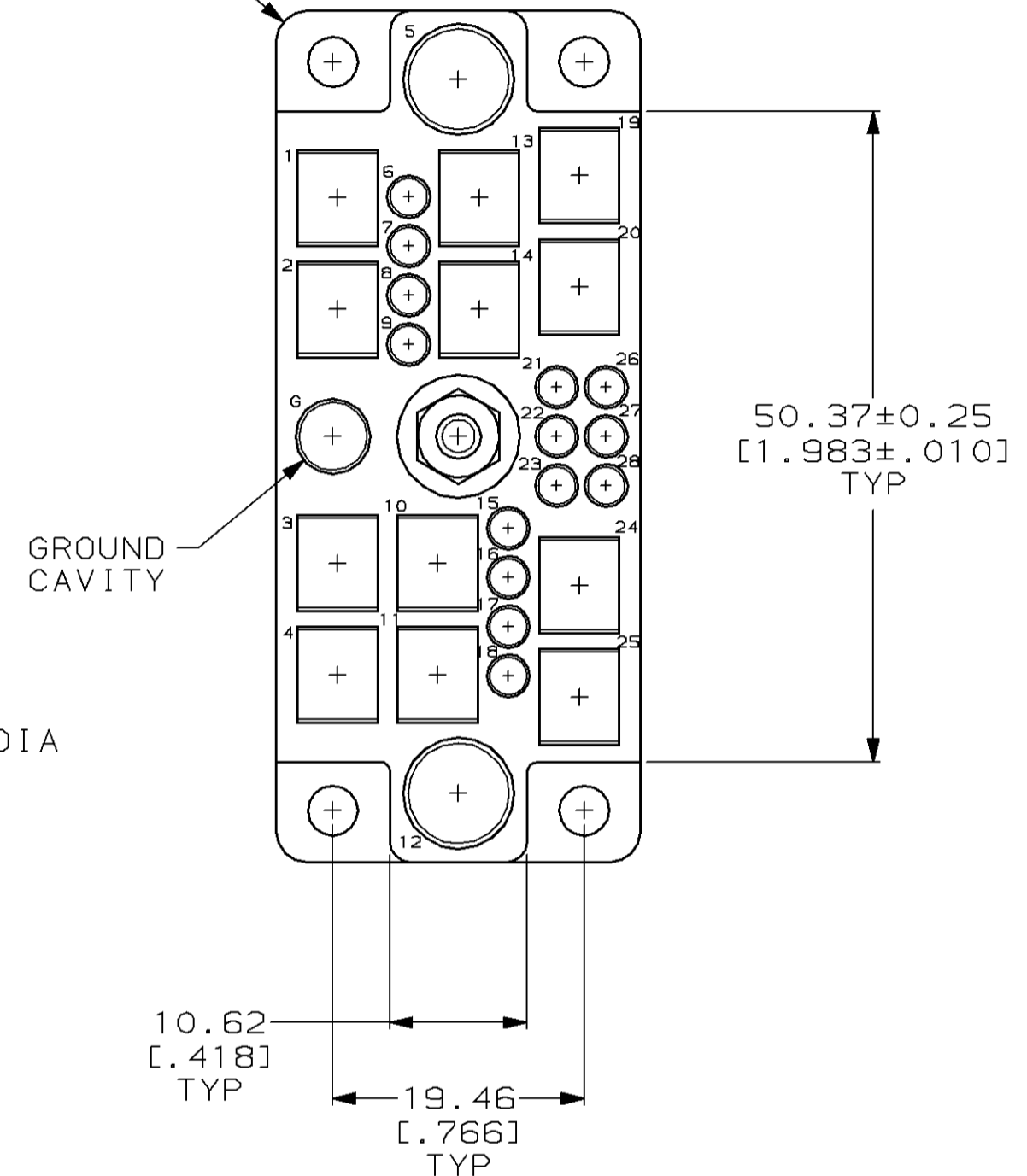
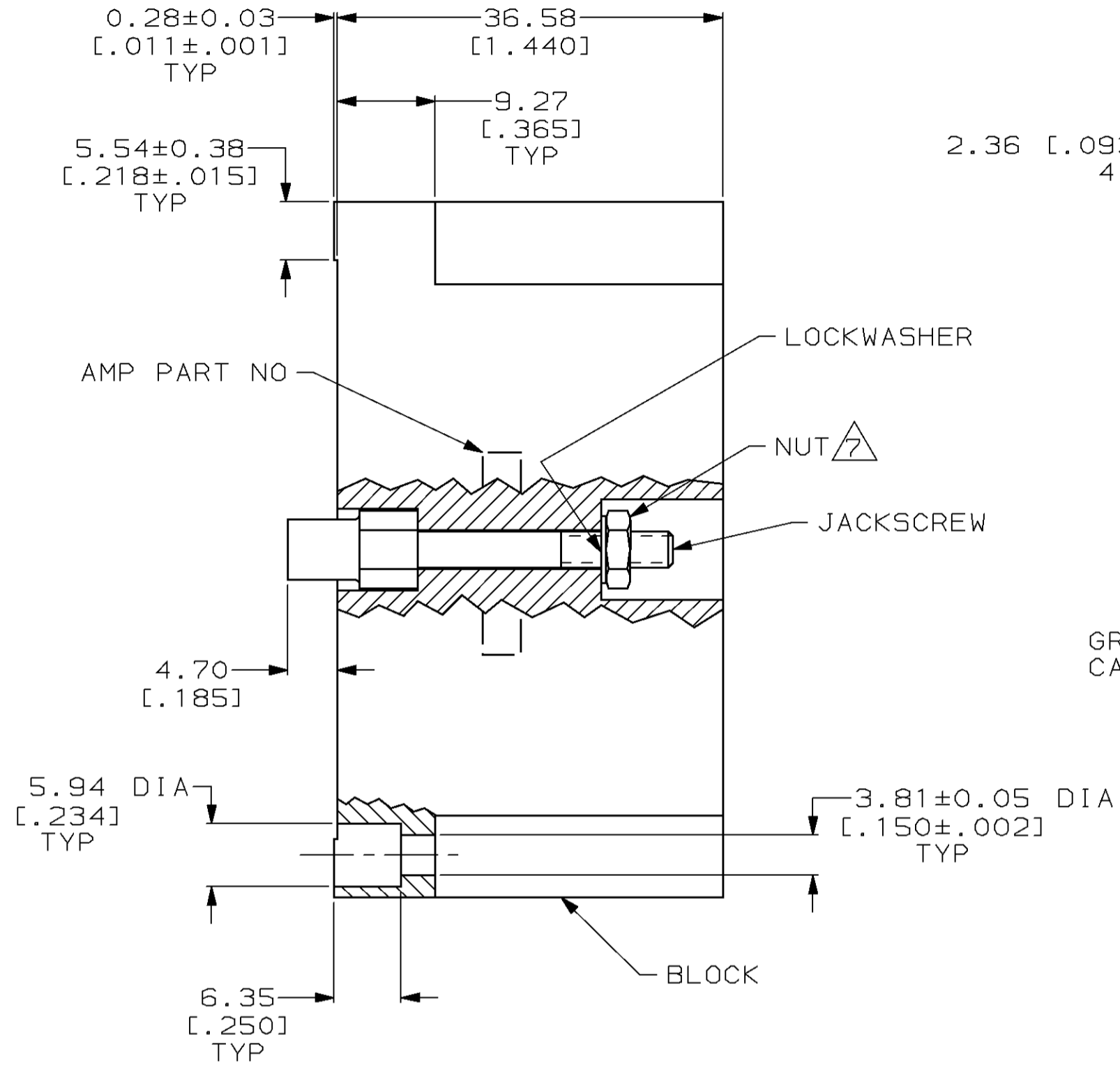
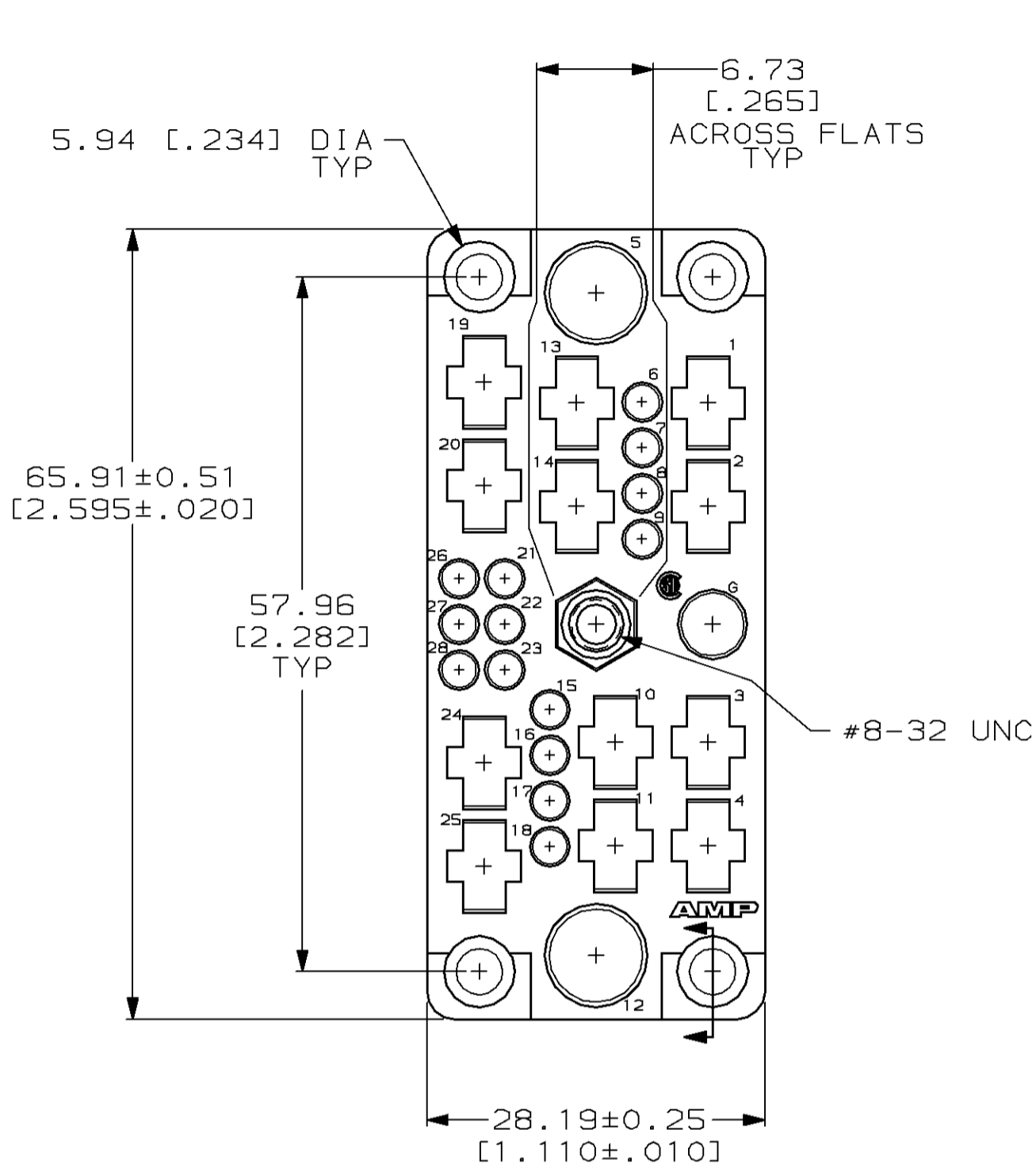


THIS DRAWING IS UNPUBLISHED. RELEASED FOR PUBLICATION  
 BY AMP INCORPORATED. ALL RIGHTS RESERVED.

REVISIONS				DATE	DWN	APVD
P	LTR	DESCRIPTION				
J		REDRAWN W/O CHANGE PER EC 0020-292-96	10 JUL 96	-	-	-



- ① BLOCK: PHENOLIC, BLACK, PER MIL-M-14 TYPE CFG. JACKSCREW & LOCKWASHER: STAINLESS STEEL. NUT: CARBON STEEL
- ② NUT: ZINC PLATED. LOCKWASHER: PASSIVATED.
- 3. ACCOMODATES 14 TYPE II OR III #16 PIN OR SOCKET CONTACTS.
- 4. COAXICON SOCKET CONTACTS & 12 FEMALE POWER CONN CONTACTS.
- 5. FOR MATING PLUG SEE 202479.
- 6. TYPE I #12 SOCKET CONTACT USED FOR GROUND.
- ⑦ TORQUED TO 10-15 IN-LB AT ASSEMBLY.

RECOMMENDED PANEL CUTOUT  
 SCALE 1:1

202478-2  
 PART NUMBER

THIS DRAWING IS A CONTROLLED DOCUMENT.		DWN B. CARBO 10 JUL 96	AMP Incorporated Harrisburg, PA 17105-3608
DIMENSIONS: mm [INCHES]		CHK R. STONE 7 AUG 96	
TOLERANCES UNLESS OTHERWISE SPECIFIED:		APVD G. STEINHAUER 22 AUG 96	NAME RECEPTACLE BLOCK ASSEMBLY, 29 POSITION, FOR CENTER FASTENER, M SERIES
0 PLC ±-	1 PLC ±-	PRODUCT SPEC	SIZE A2
2 PLC ±0.13 [.005]	3 PLC ±-	APPLICATION SPEC	CAGE CODE 00779
4 PLC ±-	ANGLES ±-	FINISH	DRAWING NO C-202478
MATERIAL	①	WEIGHT	SCALE 2:1
	②	CUSTOMER DRAWING	SHEET 1 OF 1
			REV J

单击下面可查看定价，库存，交付和生命周期等信息

[>>TE Connectivity\(泰科\)](#)