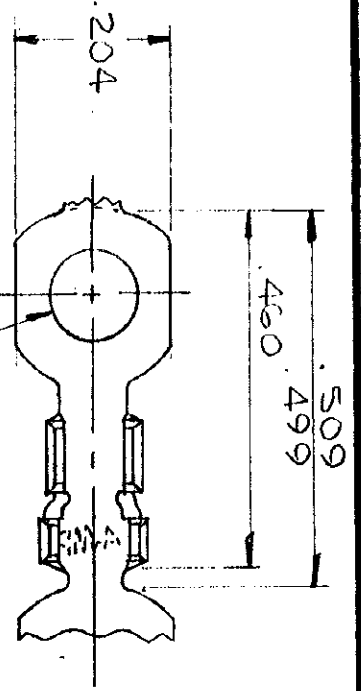
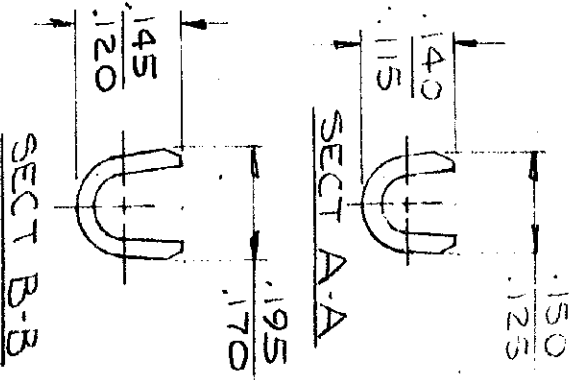
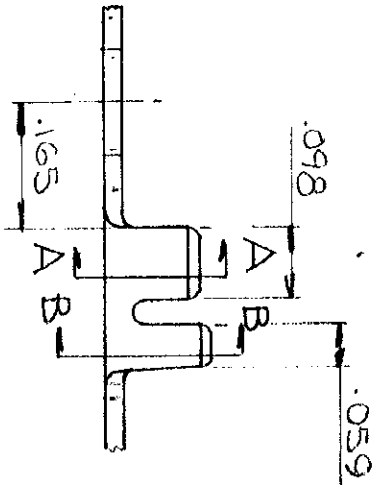


NUMBER
42065



HOLE DIA.
(SEE TABLE)



CONTINUOUS STRIP, ON REELS

WIRE SIZE AWG	INSULATION RANGE	STUD #	HOLE DIA. F.003	MATERIAL AND FINISH	TERMINAL NUMBER
20-16	.075-.110	—	.099	.025 BRASS - NONE	42065-0
			.119	.025 BRASS - NONE	42065-1
			.125	.025 BRASS - NONE	42065-2
			.099	.025 BRASS - TIN	42065-3
			.119	.025 BRASS - TIN	42065-4
			.125	.025 BRASS - TIN	42065-5
					OBsolete

DIMENSIONS IN INCHES. DO NOT SCALE PRINT.

REV	DESCRIPTION	DATE	CHK	DR
J	085-2 AF-3714	7/15/58	5/1	5/15/58
H	085-1 Per AF-3713	6/14/57	4/1	6/14/57
G	085-3-4 AF	1/5/54	3/6/1	7/10/56
F	OBsolete 42065-5	5/21/58	5/21/58	5/21/58
E	REVISED A-3467	1/17/57	1/17/57	1/17/57
D	REV. INSUL. BARREL	1/15/58	1/15/58	1/15/58
C	REDRAWN & REVISED	1/15/58	1/15/58	1/15/58
DR	REVISION RECORD	DATE	CHK	DR

©1964 AMP INCORPORATED. ALL RIGHTS RESERVED. AMP PRODUCTS COVERED BY PATENTS AND/OR PATENTS PENDING.

CUSTOMER COPY
REFERENCE ONLY



WIRE RANGE — INSULATION —

TOLERANCE EXCEPT AS NOTED ± 1% OR

SCALE 4-1

LOG NO. 42065

REV J

AMP 1252 REV 7/60

单击下面可查看定价，库存，交付和生命周期等信息

[>>TE Connectivity\(泰科\)](#)