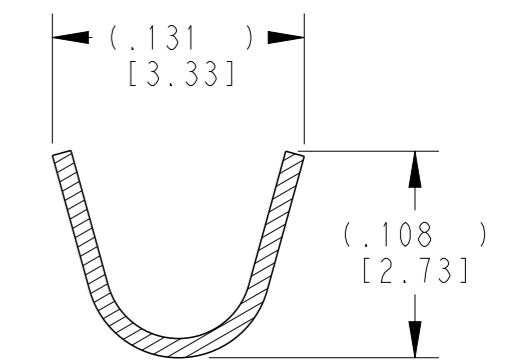
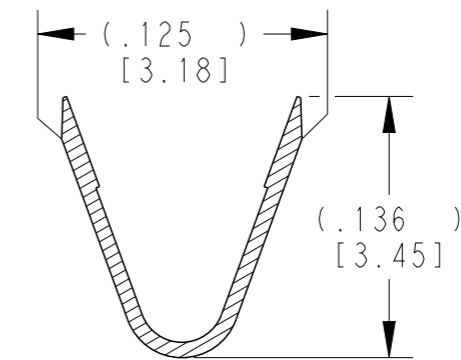
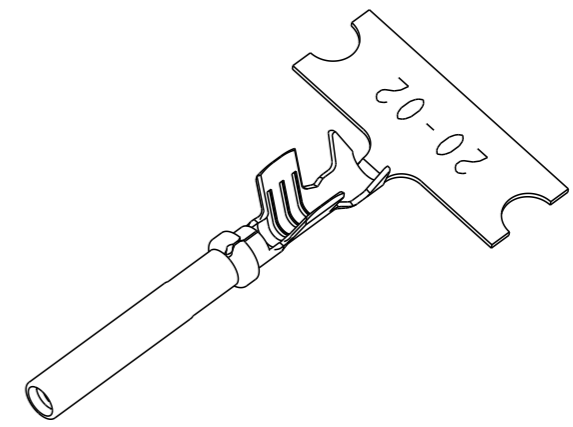
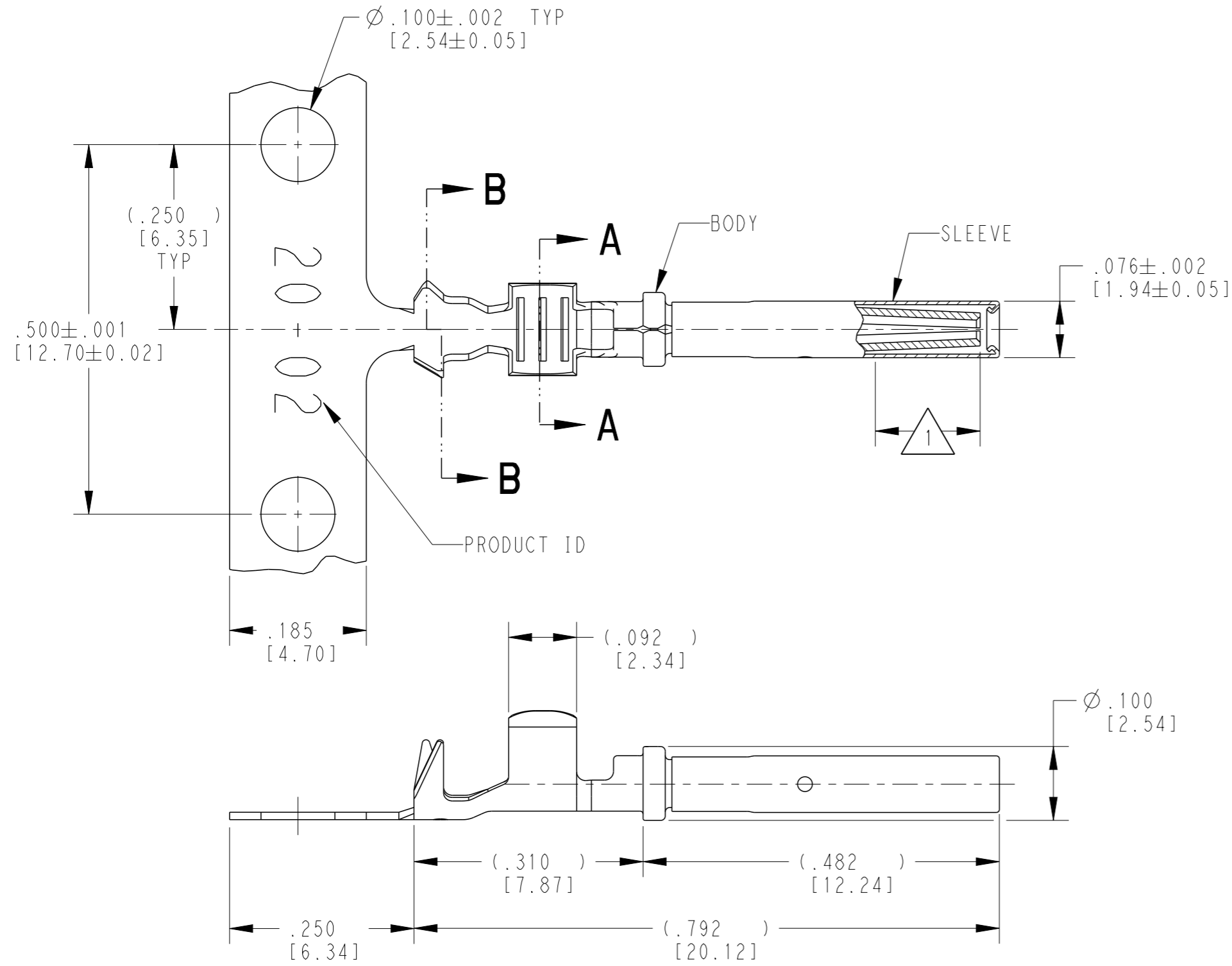


THIS DRAWING IS UNPUBLISHED. RELEASED FOR PUBLICATION 2018  
 © COPYRIGHT 2018 BY - ALL RIGHTS RESERVED.

| REVISIONS |     |                              |           |     |      |
|-----------|-----|------------------------------|-----------|-----|------|
| P         | LTR | DESCRIPTION                  | DATE      | DWN | APVD |
| E         |     | REVISED PER E.O. P20392      | 03DEC2009 |     | RDR  |
| F         |     | REVISED PER PCN :E-18-007949 | 23MAY2018 | DD  | DM   |



**SECTION A-A**  
WIRE BARREL

**SECTION B-B**  
INSULATION BARREL

3 MATERIAL:  
 BODY: .010 [0.25] THICK COPPER ALLOY  
 SLEEVE: STAINLESS STEEL

2. WIRE RANGE: 22 AWG TO 16 AWG [0.35-1.5 mm<sup>2</sup>]  
 INSULATION RANGE: Ø.051-.085 [Ø1.30-2.16]

1 APPLIES ONLY TO SELECTIVE GOLD 1062-20-0244.  
 INDICATED DIMENSION SHOWS GOLD PLATED AREA.

NOTES: UNLESS OTHERWISE SPECIFIED

|  |                    |                             |
|--|--------------------|-----------------------------|
| THIS DRAWING IS A CONTROLLED DOCUMENT. |                    | DWN J. APOSTOL 02DEC2009    |
| DIMENSIONS: INCHES [mm]                |                    | CHK D. MEYER 02DEC2009      |
| TOLERANCES UNLESS OTHERWISE SPECIFIED: |                    | APVD R. REED 03DEC2009      |
| 0 PLC ±                                | 1 PLC ±            | PRODUCT SPEC 0425-015-0000  |
| 2 PLC ±                                | 3 PLC ±.025 [0.64] | APPLICATION SPEC 114-151003 |
| 4 PLC ±                                | ANGLES ±           | WEIGHT 0.21 g               |
| MATERIAL 3                             | FINISH             | CUSTOMER DRAWING            |
| SEE TABLE                              |                    | SCALE 6:1                   |

|                                     |                 |                            |
|-------------------------------------|-----------------|----------------------------|
| TE INTERNAL PN                      | DEUTSCH PN      | PLATING                    |
| 1062-20-0222                        | 1062-20-0222    | NICKEL                     |
| 1062-20-0244                        | 1062-20-0244    | SELECTIVE GOLD             |
| 1062-20-0277                        | 1062-20-0277    | TIN                        |
| <b>STE</b> TE Connectivity          |                 |                            |
| NAME STAMPED CONTACT SOCKET SIZE 20 |                 |                            |
| SIZE A3                             | CAGE CODE 4AFU8 | DRAWING NO. C=1062-20-02XX |
| RESTRICTED TO -                     |                 | REV F                      |

单击下面可查看定价，库存，交付和生命周期等信息

[>>TE Connectivity\(泰科\)](#)