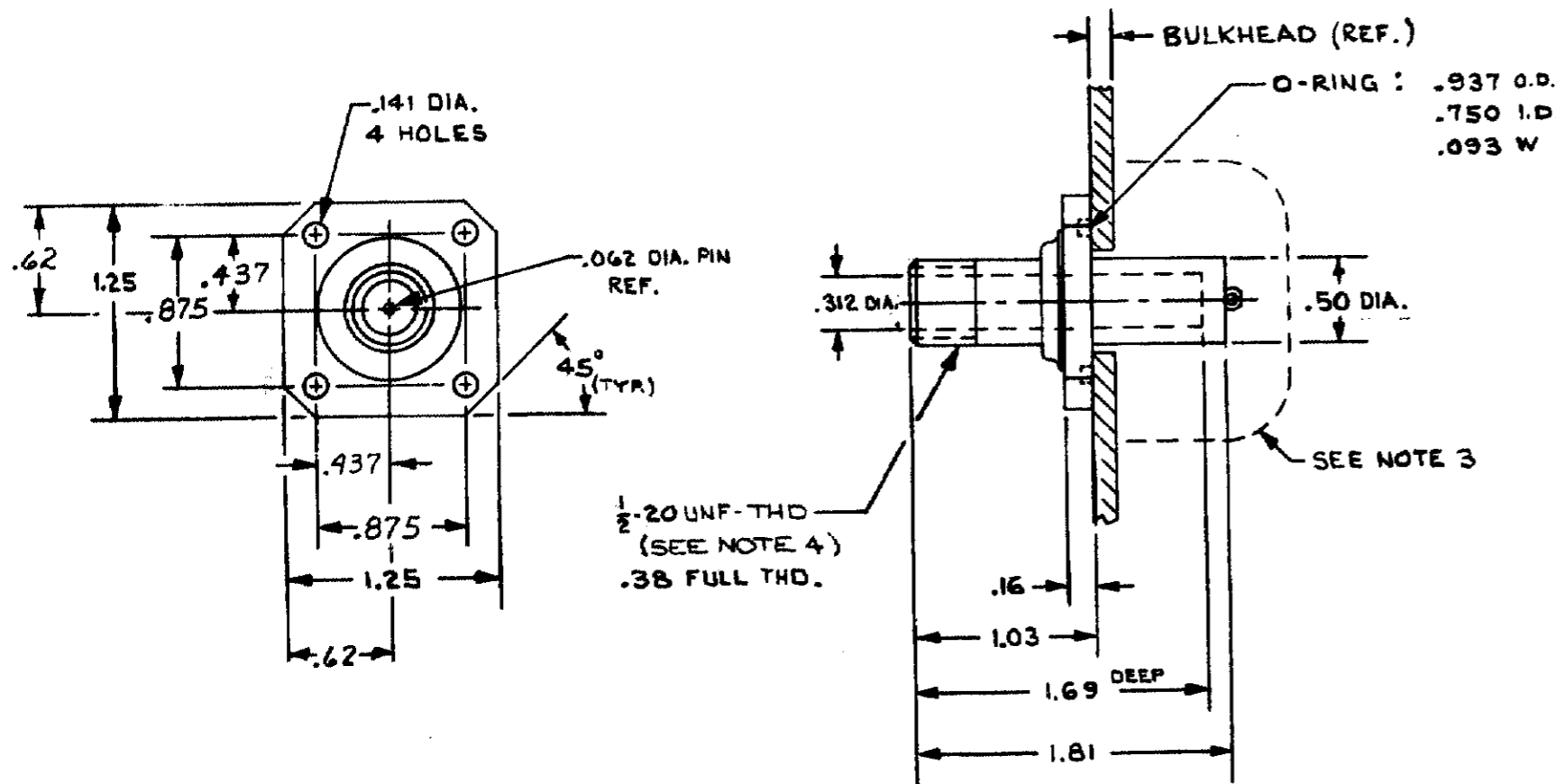


©1968 BY AMP INCORPORATED. ALL RIGHTS RESERVED. AMP PRODUCTS COVERED BY PATENTS AND/OR PATENTS PENDING.

THIS PRODUCT DESIGNED AND BUILT BY AMP INCORPORATED. NO LICENSE TO USE THAT DESIGN IN MANUFACTURE, OR TO USE ANY ISSUED OR PENDING PATENTS WHICH ARE INVOLVED, IS IMPLIED.

REVISIONS				
ZONE	LTR	DESCRIPTION	DATE	APPROVED
-	-	REF SD 24529		
A		.875 WAS .88 & .437 WAS .44	9-1-70	<i>M.K.</i>
B		ADDED NOTE 4 (SEE 4-284)	3/15/79	<i>M.K.</i>
C		REV. PER E.C.N. 8630	2-6-79	<i>M.K.</i>



- NOTE:
- RECEPTACLE TO MATE WITH AMP LGH-1L LEAD ASSEMBLY, AVAILABLE SEPARATELY. WHEN MATING LEAD ASSEMBLY WITH RECEPTACLE, APPLY SILICONE GREASE PER 830800 INSTRUCTIONS.
  - ALL METAL PARTS ARE TIN PLATED.
  - CUSTOMER MUST PROTECT THE RECEPTACLE BACK END AGAINST ARC OVER & BREAKDOWN
  - THREAD MEASUREMENT IN ACCORDANCE WITH H-28 HANDBOOK (3 WIRE METHOD) USING WIRE DIA. .02887, MEASUREMENT OVER WIRES SHALL BE .5111/.4971 DIA.

PART NO. IS THIS DWG. -1

ITEM NO.	DWG SIZE	PART OR IDENTIFYING NO.	NOMENCLATURE OR DESCRIPTION	SYMBOL
PARTS LIST				
UNLESS OTHERWISE SPECIFIED: DIMENSIONS ARE IN INCHES TOLERANCES .00 ± .02 ANGLES ± 1° .000 ± .005			CONTRACT NO. DR <i>Overall</i> 2-14-68	
MATERIAL:			AMP INCORPORATED CAPITRON DIVISION ELIZABETHTOWN, PENNSYLVANIA	
FINISH: ~			NAME FLANGED RECEPTACLE ASSY. WITH O-RING (FOR BULKHEAD APPLICATION) LGH-1L	
NEXT ASSY			SIZE B	CODE IDENT NO. 00779
FINAL ASSY			NUMBER 858882	
NEXT ASSY			SCALE N.T.S.	WT
USED ON			SHEET 1 OF 1	
QTY REQD			APPLICATION	

PRINT DIST  
L-837

单击下面可查看定价，库存，交付和生命周期等信息

[>>TE Connectivity\(泰科\)](#)