



698-960, 1710-2170 & 2300-2700 MHz LTE/CELL BAND ANTENNA

Standard Antenna Solutions

LTE, NB-IoT, LTE Cat-M, World band products

Part Number: 2108994-1

PRODUCT FACTS:

- Spherical omnidirectional
- Small and lightweight
- Available in tape & reel for automatic mounting
- RoHS compliant

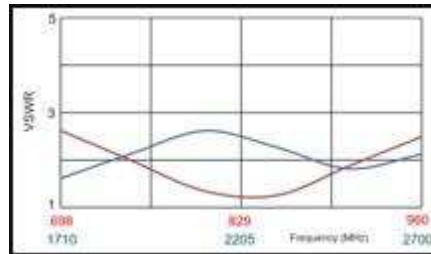
RECOMMENDATIONS:

- Minimal matching circuits required
- Bandwidth and performance is dependent on ground plane size
- The following data is based on 140mm ground size in free space
- Ground plane is the top layer of the PCB

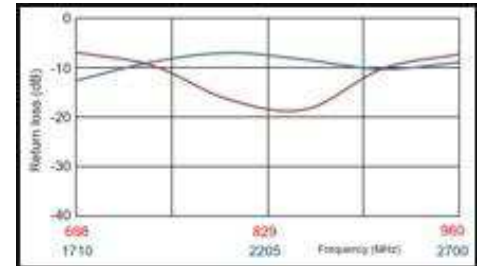
SPECIFICATIONS:

- Frequency Range: 698 - 960 MHz; 1710 - 2170 MHz, 2300 - 2700 MHz
- Peak Gain:
 - 0.7 dBi @ 710 MHz
 - 0.9 dBi @ 824 MHz
 - 1.1 dBi @ 925 MHz
 - 2.3 dBi @ 1755 MHz
 - 2.2 dBi @ 1880 MHz,
 - 0.7 dBi @ 2170 MHz
 - 1.3 dBi @ 2500 MHz
- VSWR: < 3.0
- Return loss: < -7.0 dB
- Polarization: Linear
- Power Handling: 3 Watt cw
- Size: 40.0 mm x 10.0 mm x 3.2 mm
- Weight: 2.5g
- Keep Out Area: See diagram on page 3
- Mounting: Surface-mount technology
- Operating Temperature: -40 to 85°C
- Storage Temperature: -40 to 85°C

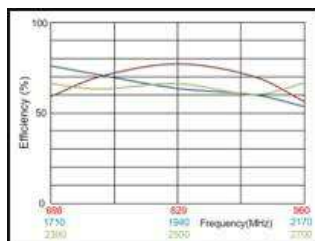
VSWR:



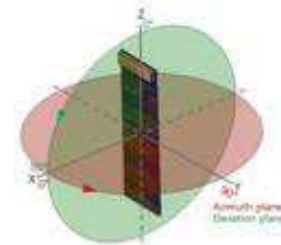
RETURN LOSS:



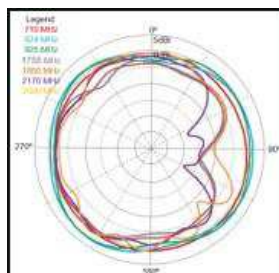
EFFICIENCY:



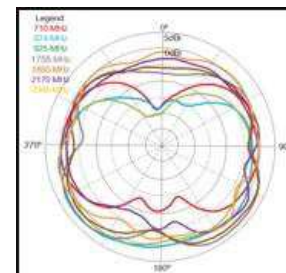
TEST ORIENTATION IN FREE SPACE:



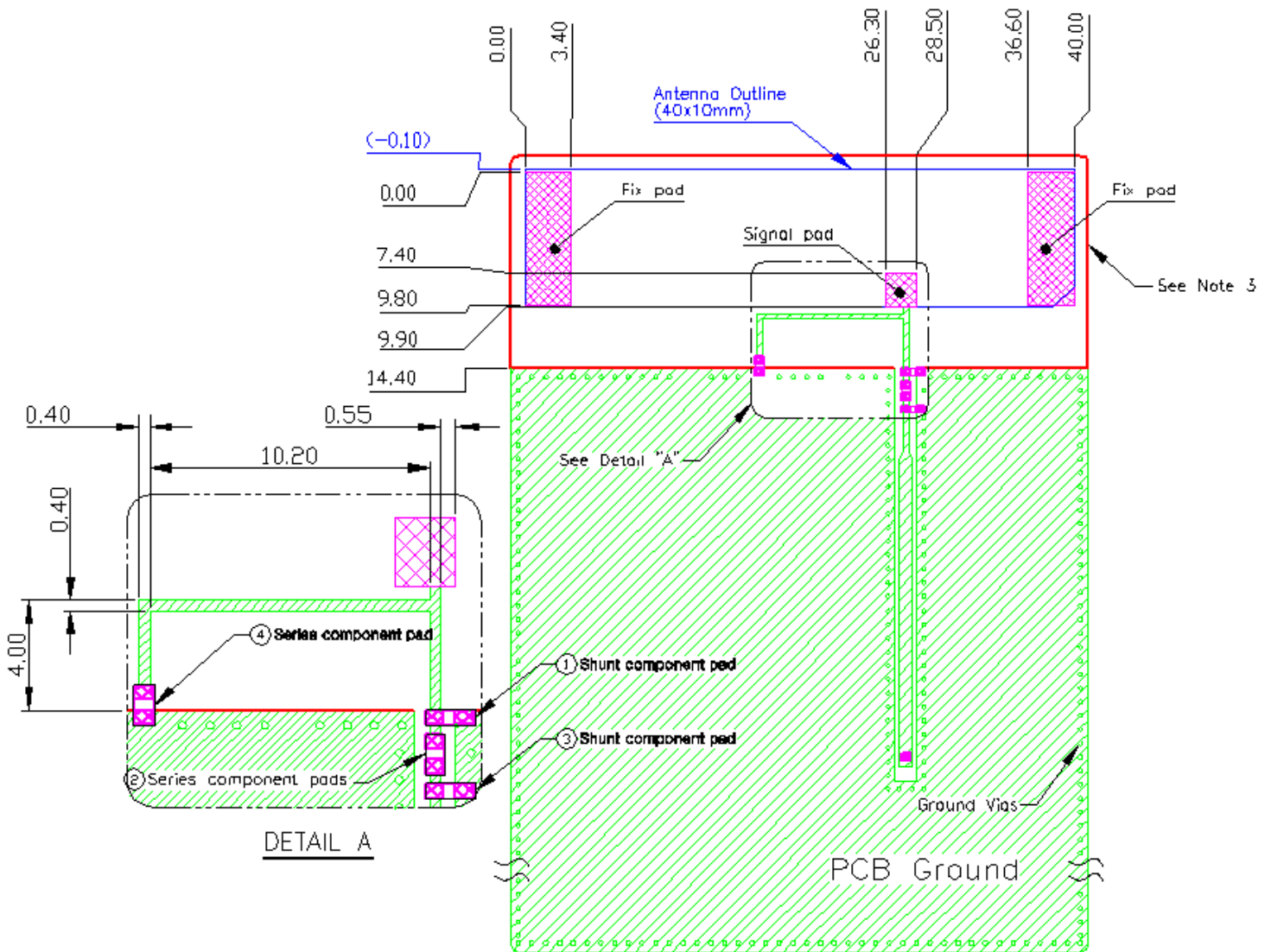
AZIMUTH:



ELEVATION:



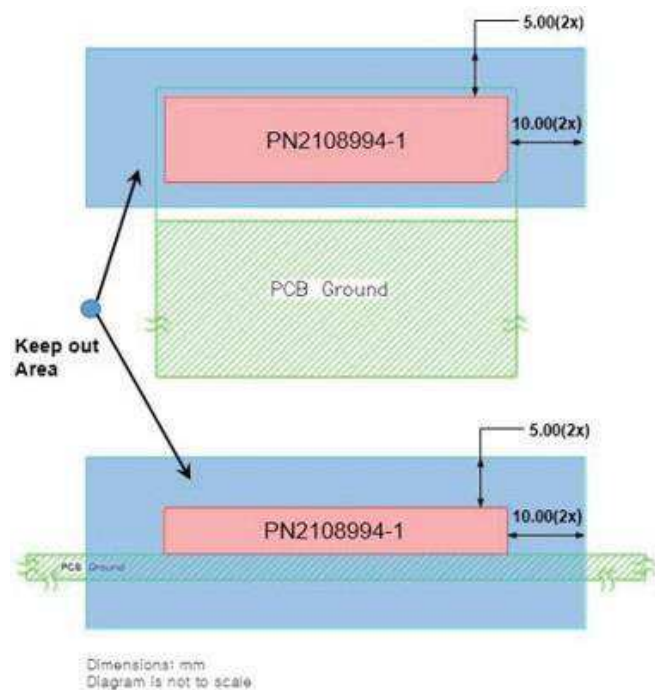
MOUNTING GUIDE:



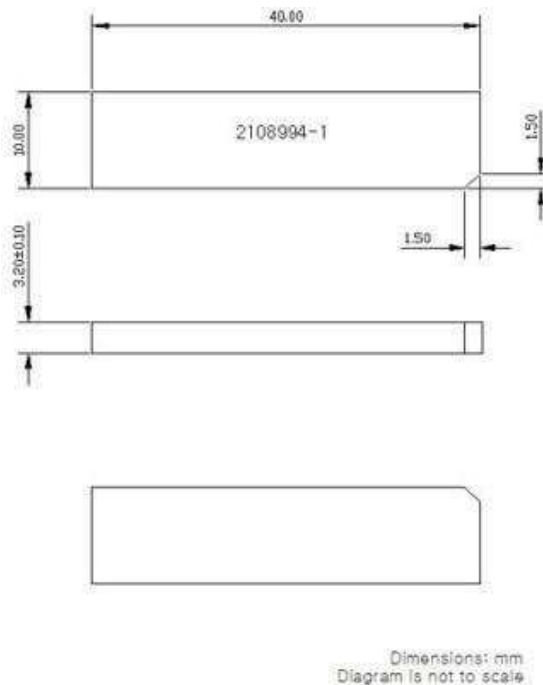
- NOTES: 1. Antenna must be mounted on the edge of PCB.
 2. NC = Non connection (mechanical mounting pads)
 3. No copper allowed in designated area on all PCB layer -
 4. For more information please call TE.
 5. Measured with below matching circuit condition.
 ①0.5pF, ②2.2nH, ③NC, ④22nH

Dimensions: mm
 Diagram is not to scale

KEEP OUT AREA:



APPROXIMATE DIMENSIONS:



TE TECHNICAL SUPPORT CENTER

- USA: +1 (800) 522-6752
- Canada: +1 (905) 475-6222
- Mexico: +52 (0) 55-1106-0800
- Latin/S. America: +54 (0) 11-4733-2200
- Germany: +49 (0) 6251-133-1999
- UK: +44 (0) 800-267666
- France: +33 (0) 1-3420-8686
- Netherlands: +31 (0) 73-6246-999
- China: +86 (0) 400-820-6015

For phone numbers in other countries, go to te.com/support-center

te.com

TE Connectivity, TE Connectivity (logo) and Every Connection Counts are trademarks. All other logos, products and/or company names referred to herein might be trademarks of their respective owners.

The information given herein, including drawings, illustrations and schematics which are intended for illustration purposes only, is believed to be reliable. However, TE Connectivity makes no warranties as to its accuracy or completeness and disclaims any liability in connection with its use. TE Connectivity's obligations shall only be as set forth in TE Connectivity's Standard Terms and Conditions of Sale for this product and in no case will TE Connectivity be liable for any incidental, indirect or consequential damages arising out of the sale, resale, use or misuse of the product. Users of TE Connectivity products should make their own evaluation to determine the suitability of each such product for the specific application.

© 2019 TE Connectivity Ltd. family of companies All Rights Reserved.

9-1773982-2 12/19 Original

单击下面可查看定价，库存，交付和生命周期等信息

[>>TE Connectivity\(泰科\)](#)