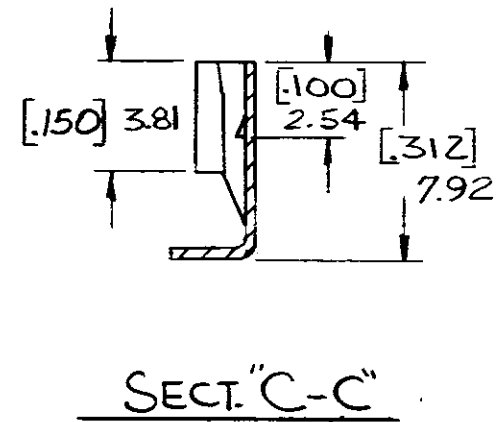
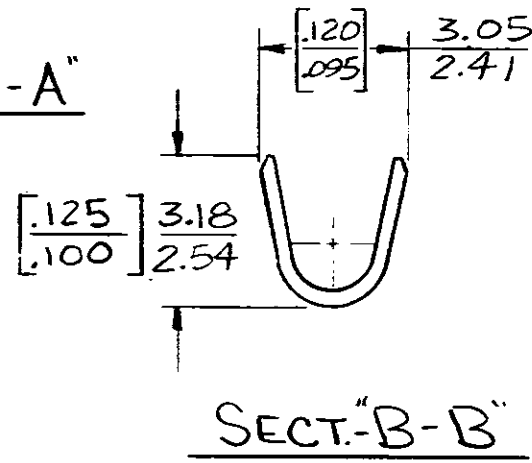
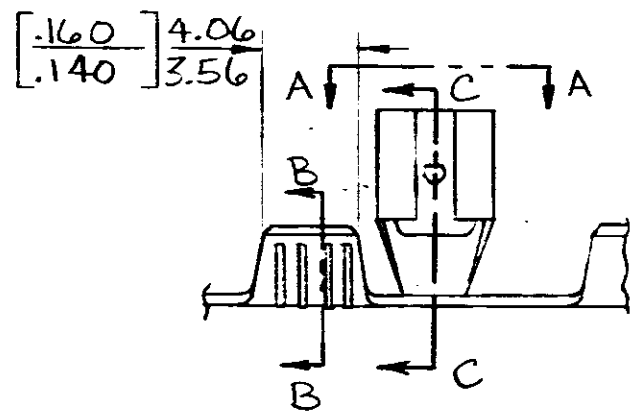
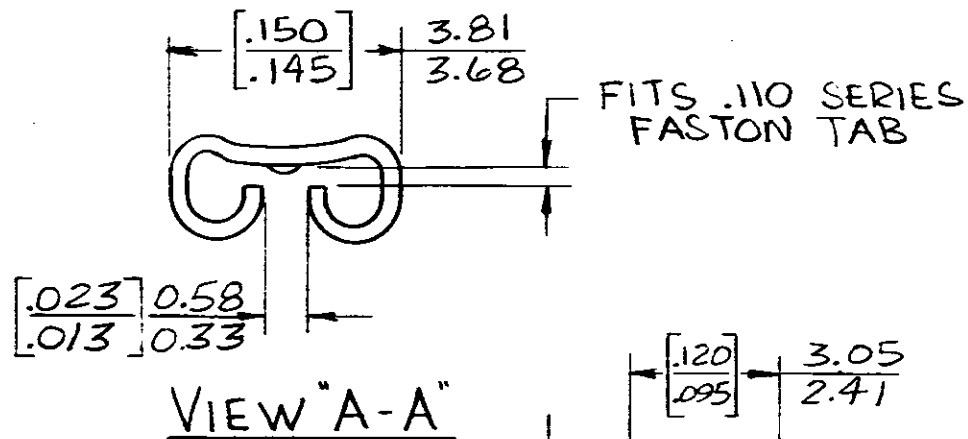


THIS DRAWING IS UNPUBLISHED. RELEASED FOR PUBLICATION . 19

© COPYRIGHT 19 BY AMP INCORPORATED, HARRISBURG, PA. ALL INTERNATIONAL RIGHTS RESERVED. AMP PRODUCTS MAY BE COVERED BY U.S. AND FOREIGN PATENTS AND/OR PATENTS PENDING.

REVISIONS					
NO	ZONE	LTR	DESCRIPTION	DATE	APPROVED
1		G	REVISED PER ECR-12-013459	10DEC12	PD



NOTE:

- 1 DIMENSIONS IN BRACKETS ARE IN INCHES
- 2 CONTINUOUS STRIP ON REELS

INSERTION/EXTRACTION REQUIREMENTS	1ST ON MAX (RES)	1ST OFF
TEST TAB - 62061-1	E	3

**METRIC**

[22-16] 0.5 - 1.4 mm <sup>2</sup>	#	[0.020 <sup>±0.001</sup> ] 0.51 <sup>±0.005</sup>	63233-1
WIRE SIZE	INSULATION RANGE	TAB. THK	PART NO
UNLESS OTHERWISE SPECIFIED DIMENSIONS ARE IN INCHES - mm TOLERANCES ON: DECIMALS [±0.015] 0.38 ANGLES ±	CONTRACT NO DR <i>J.R. [unclear]</i> 7-28-82 CHK <i>G. Yetter</i> 7/29/82	TE Connectivity	
MATERIAL BRASS	APPD <i>C. Meyer</i> 7-30-82 APPD <i>V. [unclear]</i> 11-16-82	NAME .110 FLAG FASTON RECEPTACLE	
FINISH PRE-TIN	DSGN APPD OTHER APPD	SIZE <b>B</b>	FSCM NO <b>00779</b>
		DRAWING NO <b>63233</b>	SHEET
		SCALE #	

单击下面可查看定价，库存，交付和生命周期等信息

[>>TE Connectivity\(泰科\)](#)