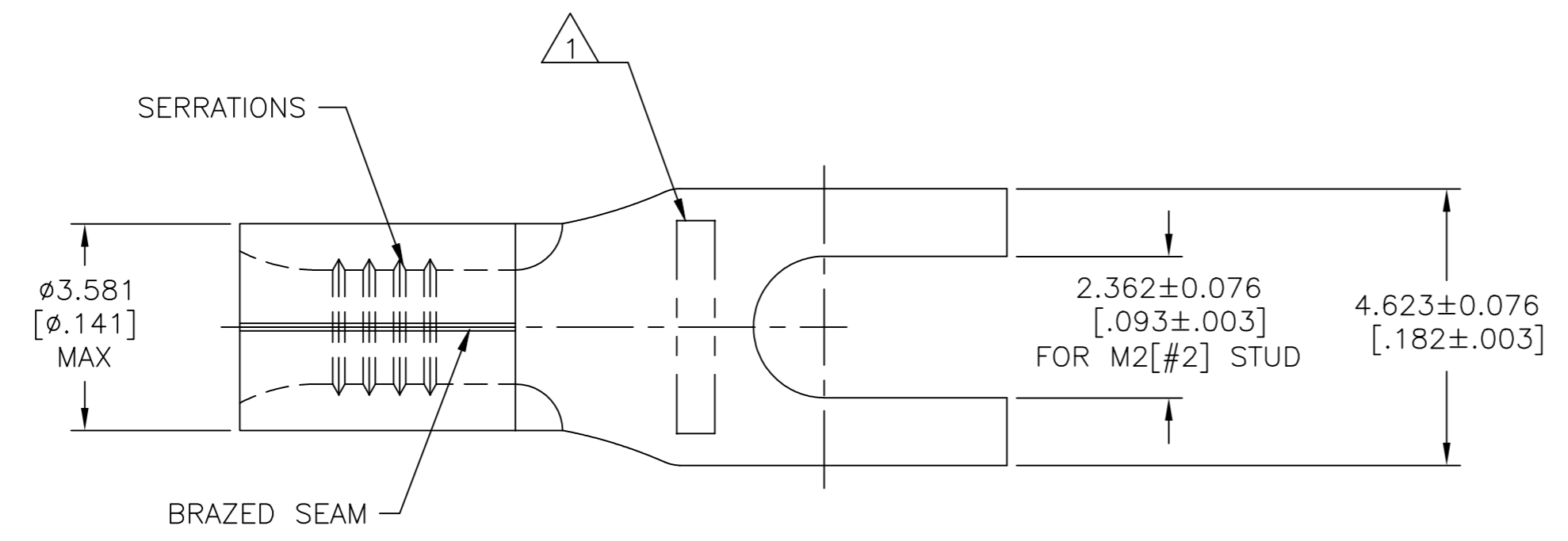


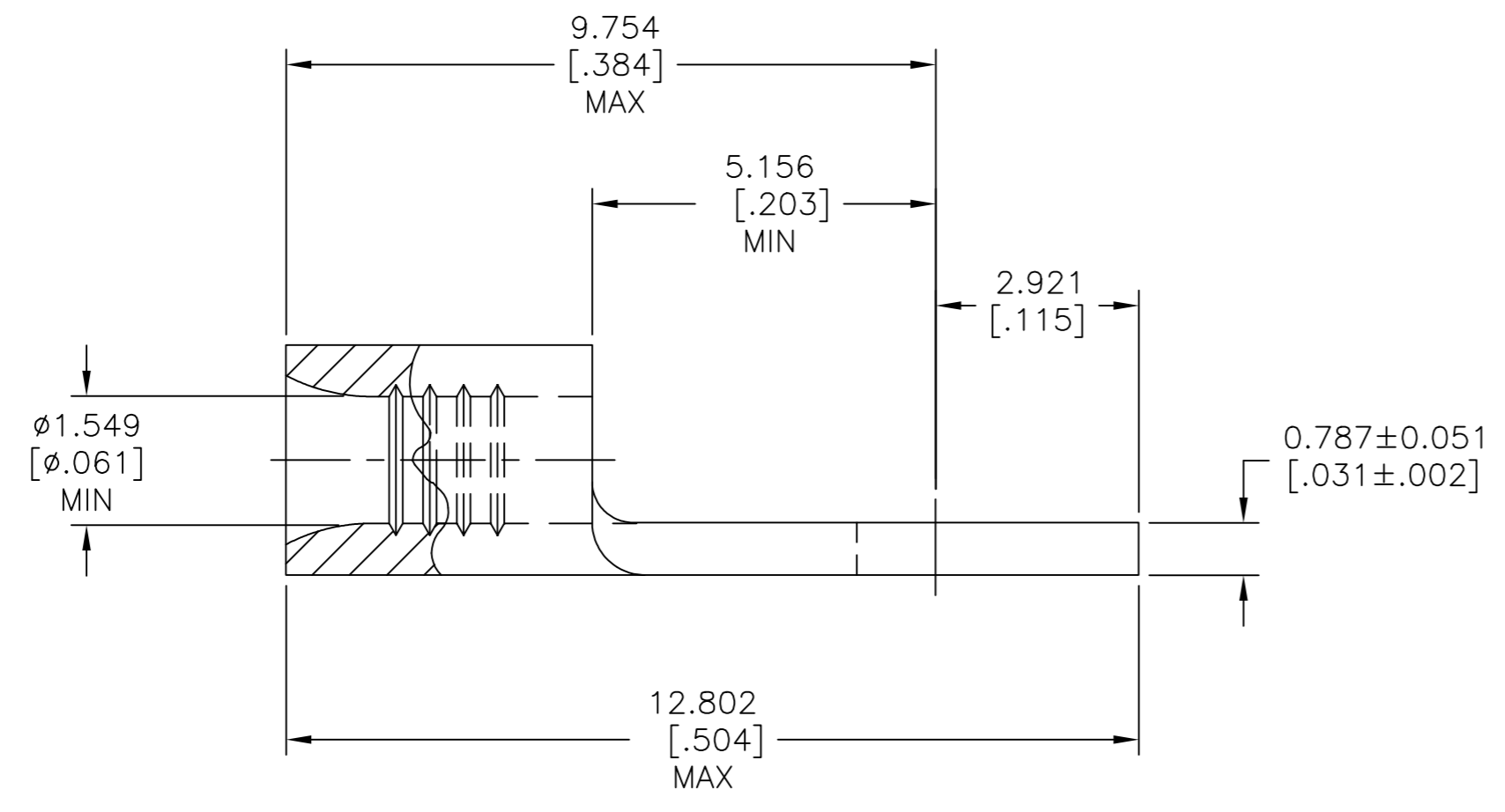
THIS DRAWING IS UNPUBLISHED. RELEASED FOR PUBLICATION  
 © COPYRIGHT - TE Connectivity Ltd. ALL RIGHTS RESERVED.

| REVISIONS |     |                                      |           |     |      |
|-----------|-----|--------------------------------------|-----------|-----|------|
| P         | LTR | DESCRIPTION                          | DATE      | DWN | APVD |
| B         |     | REV, RDRW, & SM PKG PER 0720-0040-93 | 9-26-93   | TAB | DAP  |
| B1        |     | REVISED PER ECO-17-008808            | 03MAR2018 | RS  | DR   |



|                                |                                |
|--------------------------------|--------------------------------|
| <b>AMP</b><br>WIRE RANGE       | E13288<br>Listed               |
| 22-16 AWG<br>SOLID OR STRANDED | 22-16 AWG<br>SOLID OR STRANDED |
| LR7189<br>Certified            | MILITARY P/N<br>AND CLASS      |
| 22-16 AWG<br>SOLID OR STRANDED | NOT APPLICABLE                 |

STAMP AMP 22-18\* APPROX AS SHOWN  
 22-16 TERMINALS ARE STAMPED 22-18 IN  
 ACCORDANCE WITH MILITARY SPECIFICATION  
 SAE AS7928, COMMERCIAL WIRE RANGE IS 22-16



|          |                  |           |
|----------|------------------|-----------|
| 100      | LOOSE PIECE, BOX | 8-53555-1 |
| 1000     | LOOSE PIECE      | 53555-1   |
| QUANTITY | PACKAGING TYPE   | PART NO   |

AMP INCORPORATED  
 CUSTOMER SERVICE SYSTEMS

|  |  |  |
|--|--|--|
| FOR ADDITIONAL PRODUCT INFORMATION OR COPIES OF DRAWINGS AND TECHNICAL DOCUMENTS | PRODUCT INFORMATION CENTER<br>1-800-522-6752 | MAX RECOMMENDED OPERATING TEMPERATURE:<br>170°C [338°F] MAX  |
| FOR APPLICATION  | TOOLING ASSISTANCE CENTER<br>1-800-722-1111  | VOLTAGE RATING:<br>NOT APPLICABLE  |
| TOOLING INFORMATION  | 1-800-722-1111                               | WIRE CROSS SECTIONAL AREA RANGE,<br>0.26-1.65mm <sup>2</sup> [509-3,260] CIR MILS<br>SOLID OR STRANDED |
| FOR ORDER ENTRY  | 1-800-526-5142                               |  |

THIS DRAWING IS A CONTROLLED DOCUMENT.

|  |   |
|--|---|
| DIMENSIONS:<br>mm [INCHES]                       | TOLERANCES UNLESS OTHERWISE SPECIFIED:  |
|  | 0 PLC ± -<br>1 PLC ± -<br>2 PLC ± -<br>3 PLC ± 0.127[.005]<br>4 PLC ± -<br>ANGLES ± - |
| MATERIAL<br>COPPER PER<br>ASTM B-152<br>ANNEALED | FINISH<br>TIN PLATE<br>0.00254[.000100] MIN<br>THK PER ASTM B545                      |

|                               |                                |                              |   |             |                    |                       |                    |
|-------------------------------|--------------------------------|------------------------------|---|-------------|--------------------|-----------------------|--------------------|
| DWN<br>TA BRINKMAN<br>3-26-93 | CHK<br>DA PATTERSON<br>3-26-93 | APVD<br>DE MILLER<br>3-26-93 | NAME<br>UL 486 A-B                                  | SIZE<br>A2  | CAGE CODE<br>00779 | DRAWING NO<br>C=53555 | RESTRICTED TO<br>- |
| TE Connectivity Ltd.          |                                |                              | TERMINAL, SPADE<br>TONGUE, SOLISTRAND™<br>22-16 AWG | WEIGHT<br>- | SCALE<br>10:1      | SHEET<br>1 of 1       | REV<br>B1          |
| CUSTOMER DRAWING              |                                |                              |   |             |                    |                       |                    |

单击下面可查看定价，库存，交付和生命周期等信息

[>>TE Connectivity\(泰科\)](#)