

This drawing involves proprietary design rights of Tyco Electronics Corporation, and all design, manufacture, reproduction, use and sale rights regarding the same are expressly reserved. It is submitted for a specific purpose and the recipient by accepting this drawing, assumes custody and control and agrees to take reasonable precautions; (a) that this drawing will not be copied and reproduced, in whole or in part, or its contents revealed in any manner, or to any person except to meet the purpose for which it was delivered and (b) that any special features peculiar to this design will not be incorporated in other projects without the expressed written permission of Tyco Electronics Corporation.

REVISIONS

EC	REV	DESCRIPTION	DATE
CPR	A	NEW RELEASE	1/26/06

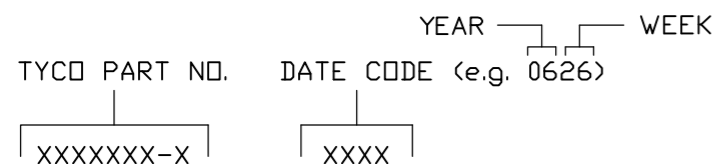
6. MODULE INFORMATION

CONNECTOR	TYCO PART NUMBER	CATALOG MODULE #	QTY	SIZE NO.	CONTACT QTY	MATING PIN	MAX. CURRENT (PER CONTACT)	CONTACT SPACING	VOLTAGE RATING*
SOCKET	6646615-1	FP0200	10	8	10	1.25 X 7.00 [.049 X .276]	45 AMPERES	7.50 [2953]	250 VOLTS
		FP0515	1	ACTIVE STRAIGHT GUIDE PIN					

\*IAW IEC-950

NOTES: UNLESS OTHERWISE SPECIFIED,

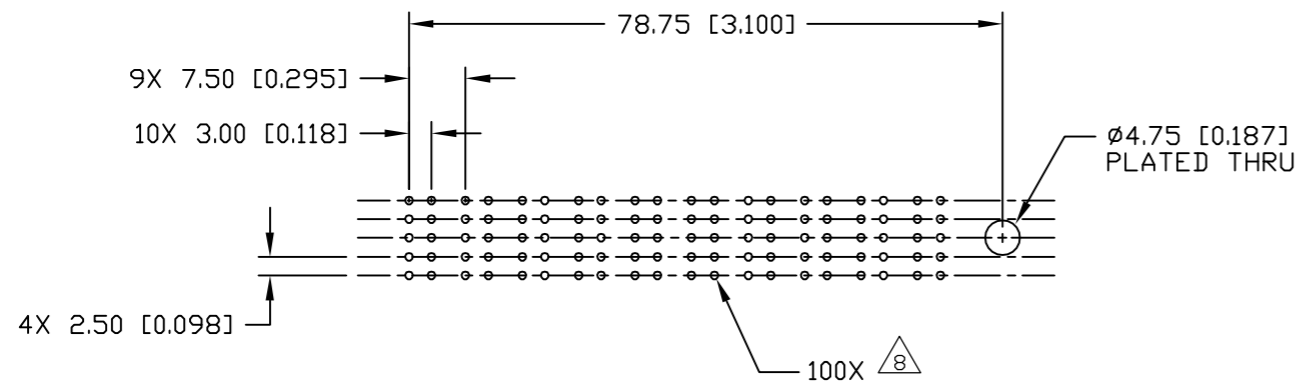
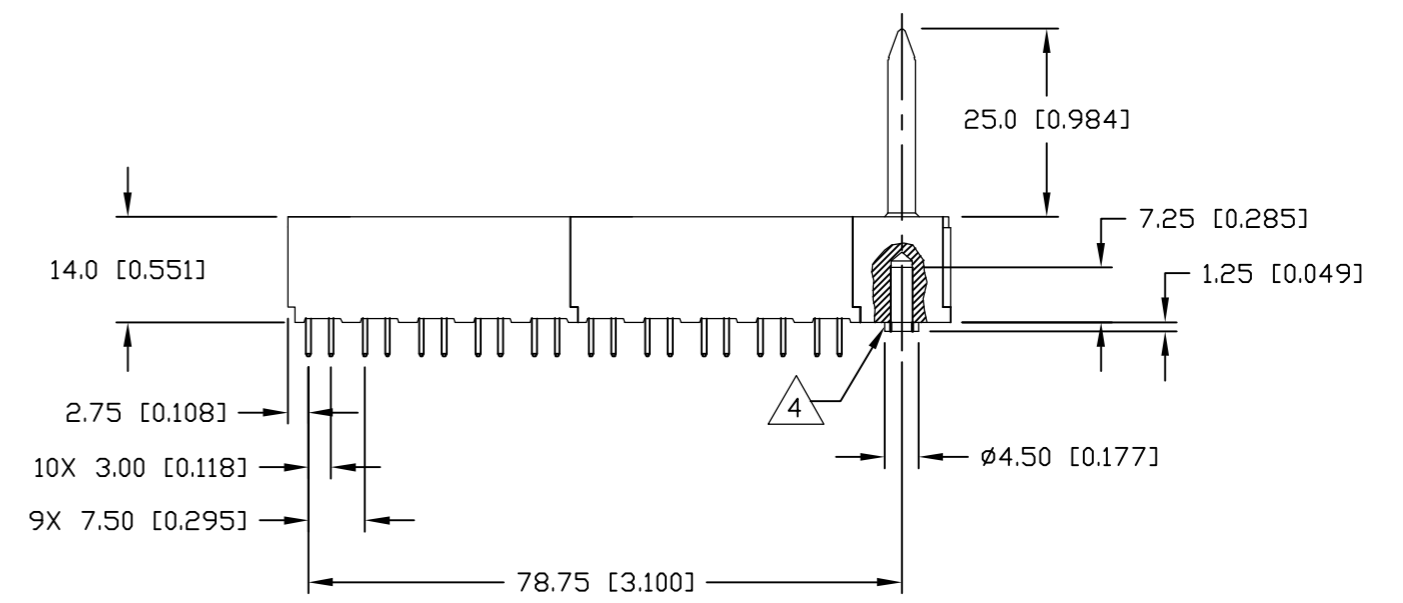
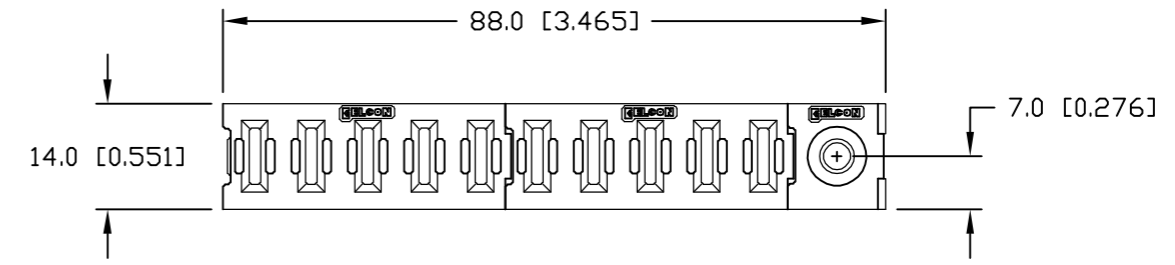
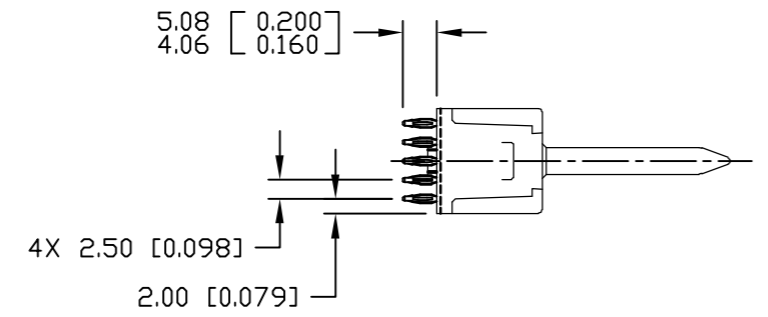
- PART NUMBER CHANGES AND OR DESIGN CHANGES AFFECTING ITEM INTERCHANGEABILITY REQUIRE PRIOR TYCO APPROVAL AND AUTHORIZATION BY REVISION TO THIS DRAWING.
- MATERIALS:
  - INSULATORS: THERMOPLASTIC, GLASS REINFORCED, COLOR BLACK. UL94V-0 FLAMMABILITY RATED.
  - POWER CONTACTS: PHOSPHOR BRONZE ALLOY,
  - GUIDE PIN: BRASS COPPER ALLOY.
- FINISHES:
  - CONTACTS: GOLD PLATE .000030" MIN. THK, OVER NICKEL .000040" MIN. THICK
  - TERMINALS: TIN PLATE, MATTE FINISH 000040" MIN. THICK
  - GUIDE PIN: NICKEL PLATE
- ACTIVE GUIDE PINS ACCEPT M3 SCREWS, (USER SUPPLIED).
- ITEMS PROVIDED TO THIS SPECIFICATION TO BE PERMANENTLY IDENTIFIED PER THE FOLLOWING IDENTIFIER:



← MM OR MM [INCH] → INCH  THIRD ANGLE PROJECTION UNLESS OTHERWISE SPECIFIED DIMENSIONS ARE IN METRIC [INCHES] TOLERANCES ANGLES ± .5° DECIMALS .XX ± .25 [0.010] .X ± .5 [0.020]	DRAWN R. F. A.	DATE 1/26/06	 Tyco Electronics Corporation Menlo Park, Ca 94025		 TITLE SOCKET CONNECTOR, FLATPAQ STRAIGHT, COMPLIANT TAILS
	CHECKED		SIZE B	DWG NUMBER C = 6646615	
APPROVED D. CHAU		1/26/06	ACAD FILE NUMBER      C6646615A.DWG      DWG SCALE 1=1      SH 1 OF 3		
APPROVED DCA APPROVED					

This drawing involves proprietary design rights of Tyco Electronics Corporation, and all design, manufacture, reproduction, use and sale rights regarding the same are expressly reserved. It is submitted for a specific purpose and the recipient by accepting this drawing, assumes custody and control and agrees to take reasonable precautions; (a) that this drawing will not be copied and reproduced, in whole or in part, or its contents revealed in any manner, or to any person except to meet the purpose for which it was delivered and (b) that any special features peculiar to this design will not be incorporated in other projects without the expressed written permission of Tyco Electronics Corporation.

REVISIONS			
EC	REV	DESCRIPTION	DATE
		SEE SHEET 1	



PRINTED CIRCUIT LAYOUT

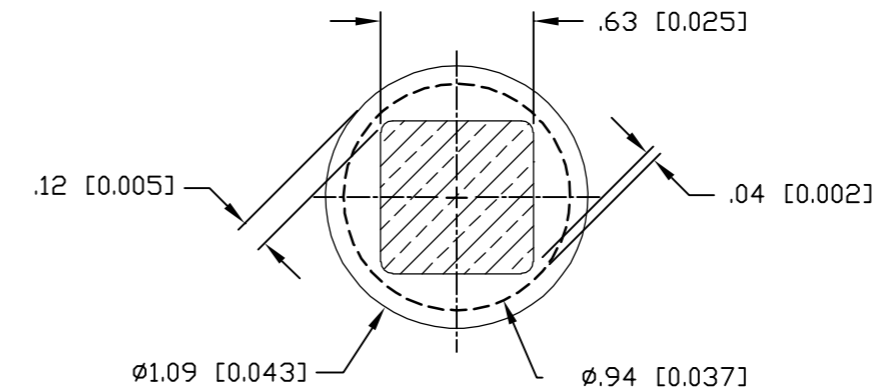
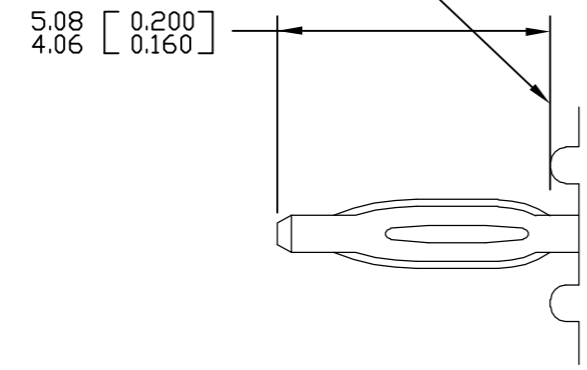
← MM OR MM [INCH] INCH  THIRD ANGLE PROJECTION UNLESS OTHERWISE SPECIFIED DIMENSIONS ARE IN METRIC [INCHES] TOLERANCES ANGLES ± .5° DECIMALS .XX ± .25 [0.010] .X ± .5 [0.020]	DRAWN R. F. A.	DATE 1/26/06	 Tyco Electronics Corporation Menlo Park, Ca 94025 	TITLE SOCKET CONNECTOR, FLATPAQ STRAIGHT, COMPLIANT TAILS		
	CHECKED					
	APPROVED		APPROVED D. CHAU 1/26/06	SIZE B	DWG NUMBER C = 6646615	REV. A
	ACAD FILE NUMBER	C6646615A.DWG		DWG SCALE 1=1	SH 2 OF 3	

This drawing involves proprietary design rights of Tyco Electronics Corporation, and all design, manufacture, reproduction, use and sale rights regarding the same are expressly reserved. It is submitted for a specific purpose and the recipient by accepting this drawing, assumes custody and control and agrees to take reasonable precautions; (a) that this drawing will not be copied and reproduced, in whole or in part, or its contents revealed in any manner, or to any person except to meet the purpose for which it was delivered and (b) that any special features peculiar to this design will not be incorporated in other projects without the expressed written permission of Tyco Electronics Corporation.

REVISIONS

EC	REV	DESCRIPTION	DATE
		SEE SHEET 1	

P.C. BOARD SURFACE (REF)



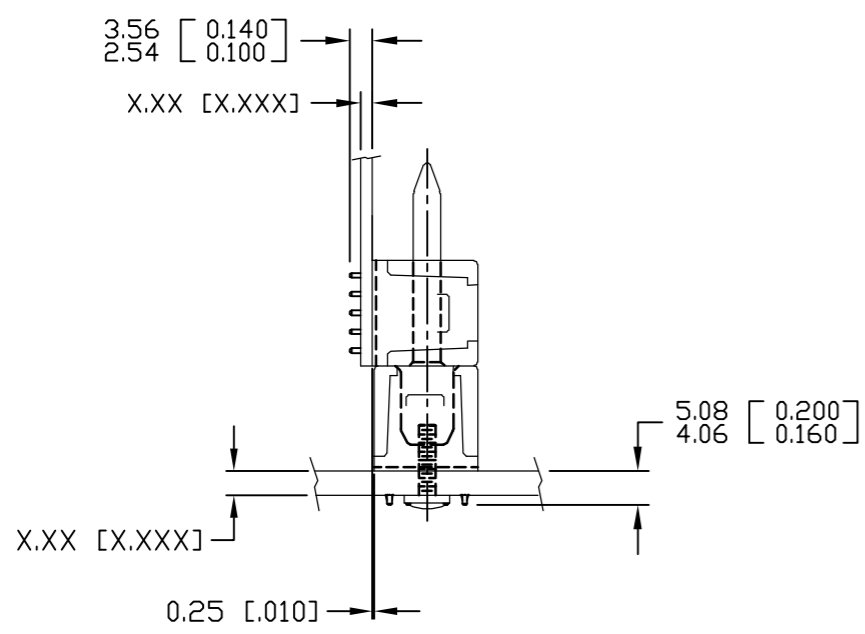
7. COMPLIANT PIN DETAIL

INSERTION/EXTRACTION FORCES  
 MAXIMUM PUSH-IN: 133.3N PER PIN [30 LBS]  
 MINIMUM PUSH-OUT: 44.4N PER PIN [10 LBS]

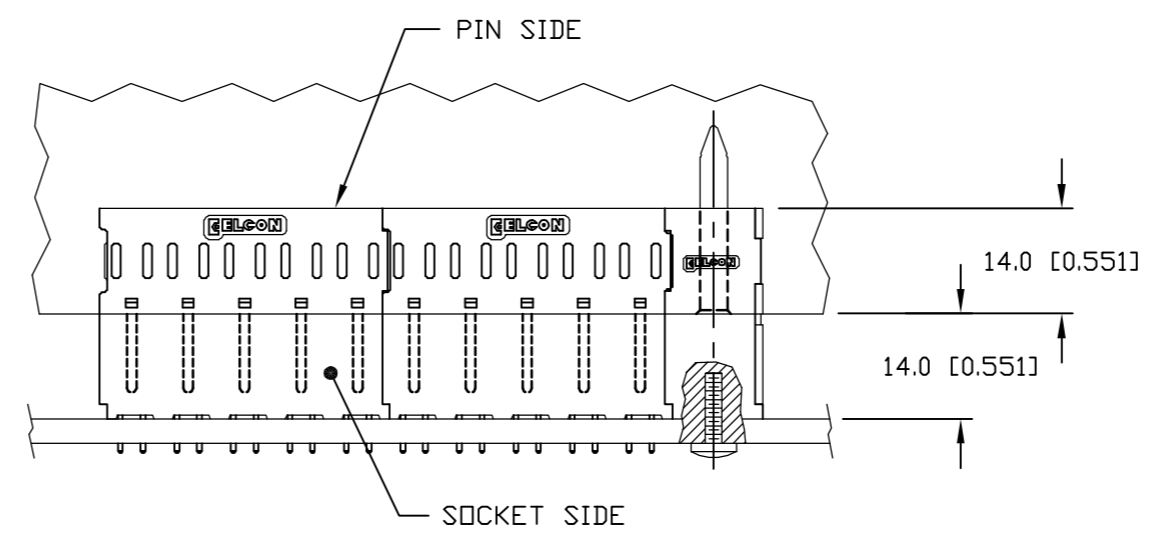
8. SOLDER TERMINATION AREA

RECOMMENDED PRINTED CIRCUIT HOLE

DRILLED HOLE:  $\phi 1.15 [0.0453] \pm 0.13 [0.005]$   
 COPPER PLATE: .025-.050 [0.001-.002] (PER SURFACE)  
 TIN PLATE: .0005 [0.00002] (PER SURFACE)



MATED CONDITION



← MM OR MM [INCH]  THIRD ANGLE PROJECTION UNLESS OTHERWISE SPECIFIED DIMENSIONS ARE IN METRIC [INCHES] TOLERANCES ANGLES ± .5° DECIMALS .XX ± .25 [0.010] .X ± .5 [0.020]	DRAWN R. F. A.	DATE 1/26/06	 Tyco Electronics Corporation Menlo Park, Ca 94025 	
	CHECKED			TITLE
	APPROVED		APPROVED D. CHAU 1/26/06	USER INFORMATION COMPLIANT TAIL TERMINATION AND MATED CONDITION
	APPROVED DCA APPROVED		ACAD FILE NUMBER C6646615A.DWG	
			SIZE B DWG NUMBER C = 6646615 REV. A	
			DWG SCALE 1=1 SH 3 OF 3	

4

3

2

1

B

B

A

A

4

3

2

1

单击下面可查看定价，库存，交付和生命周期等信息

[>>TE Connectivity\(泰科\)](#)