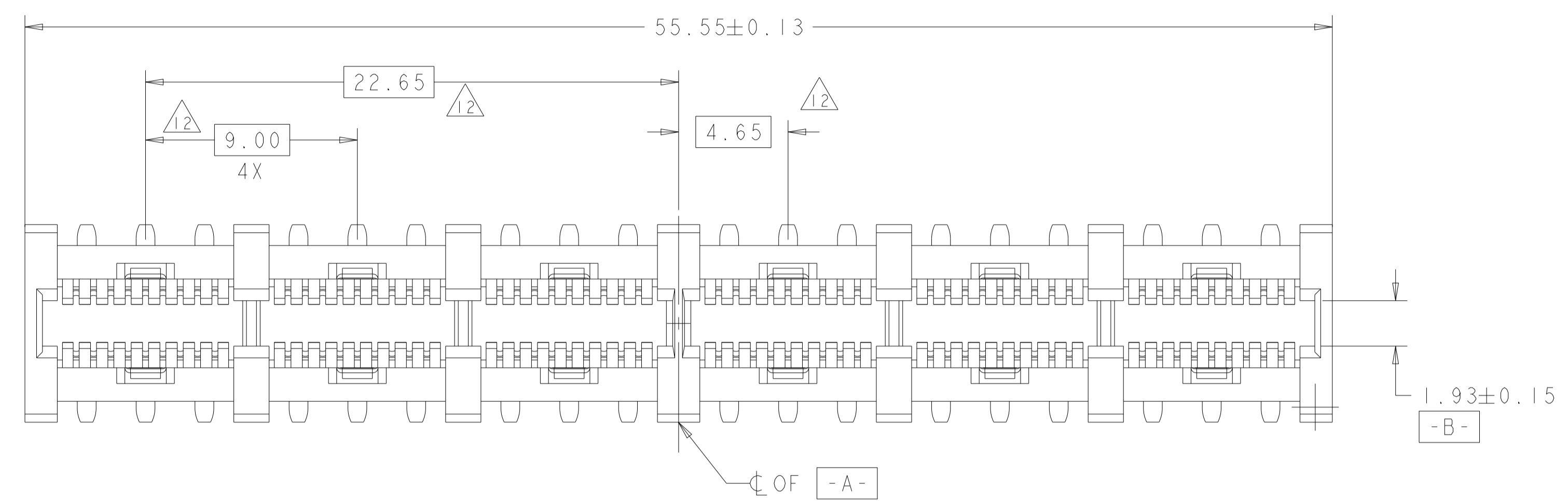
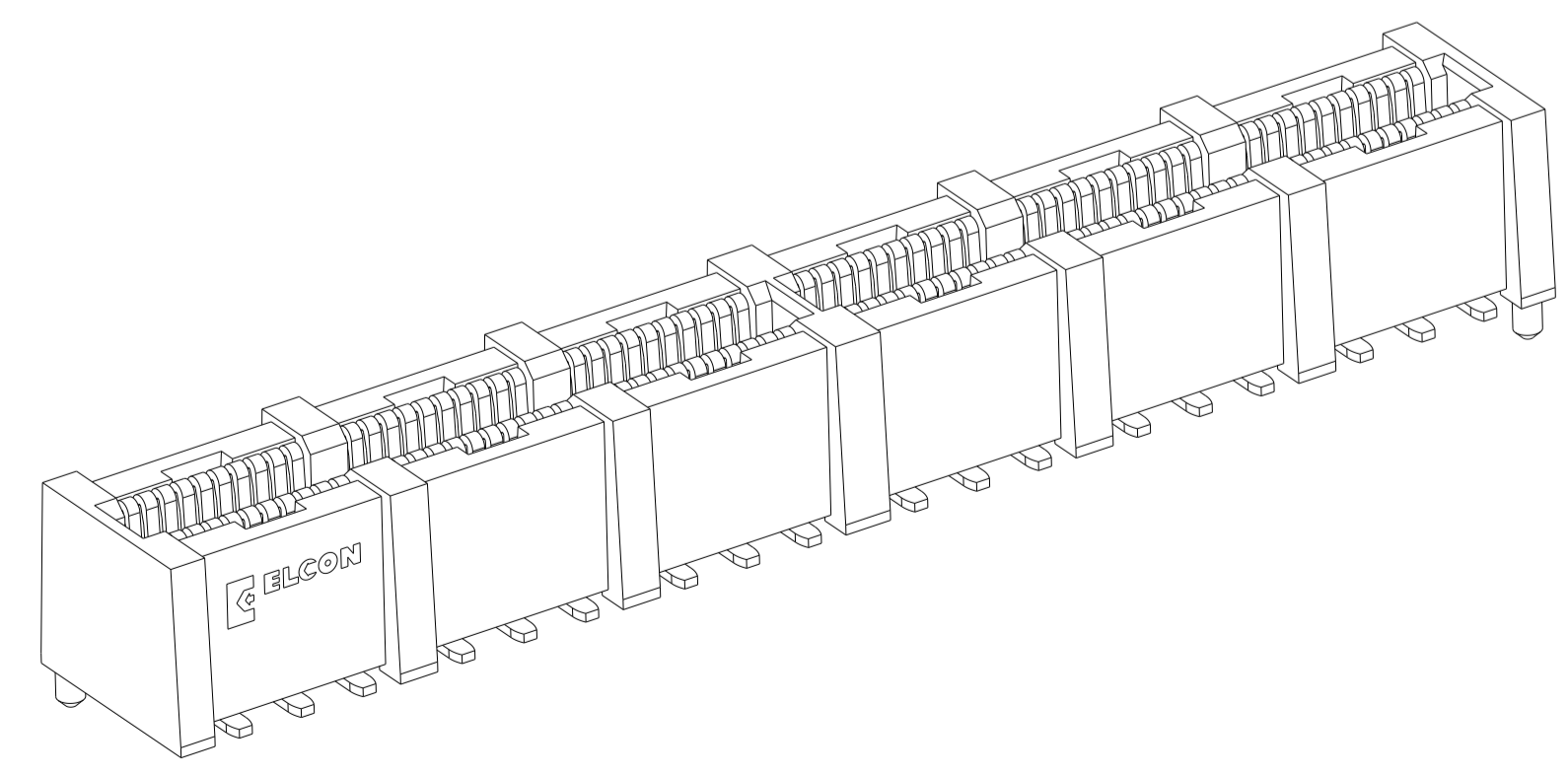
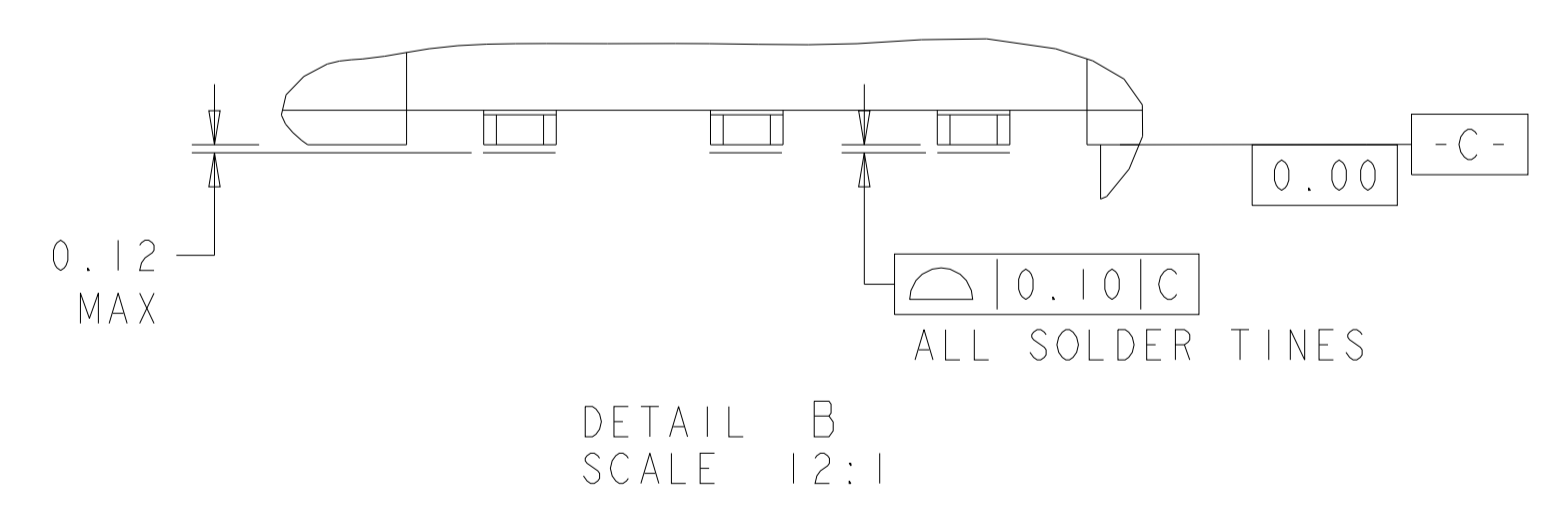
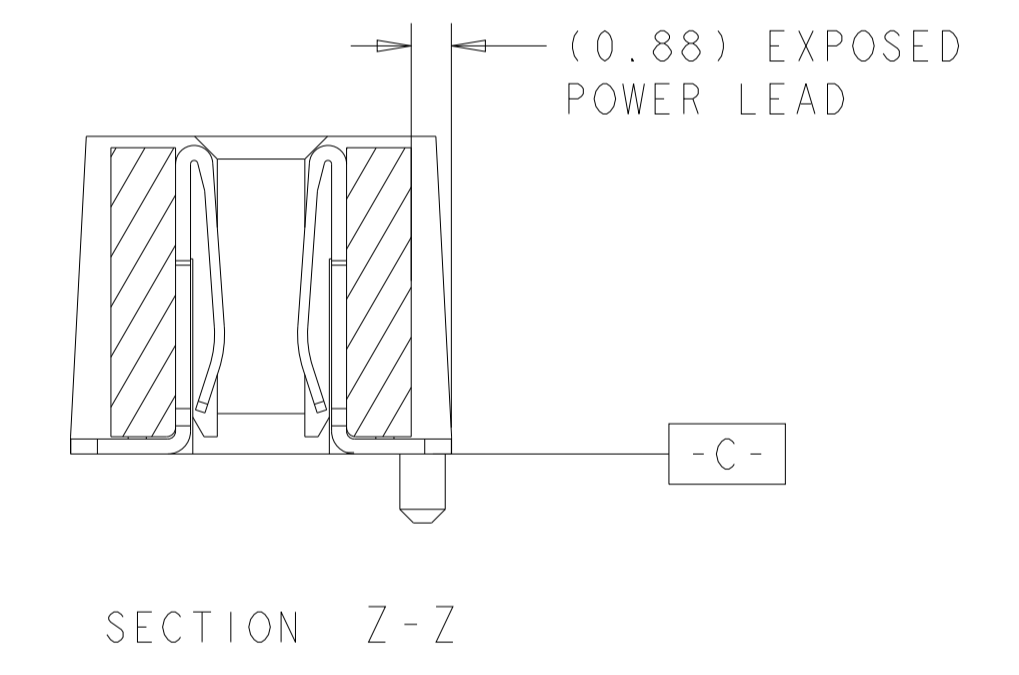
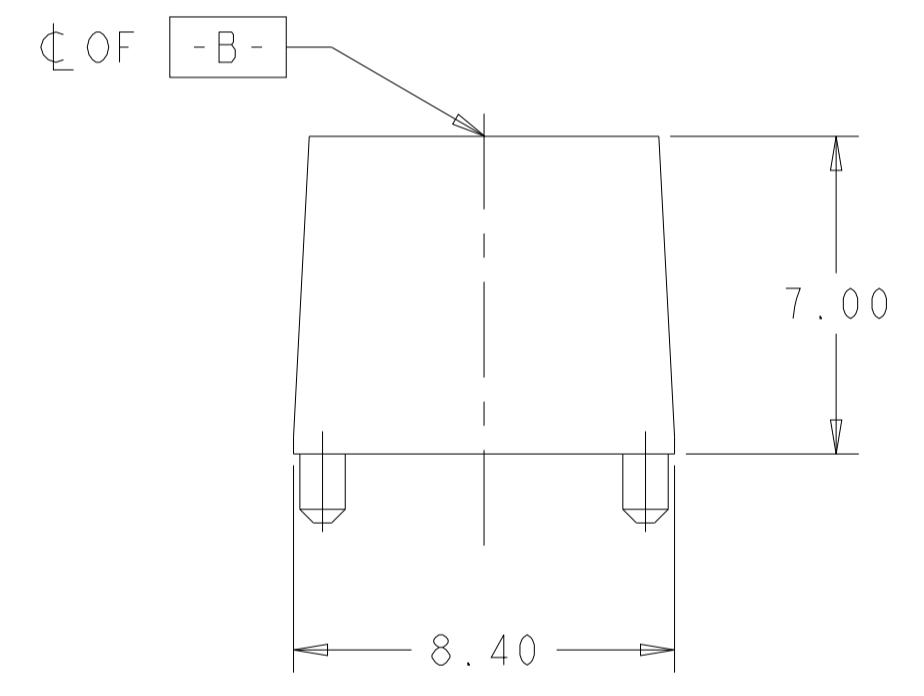
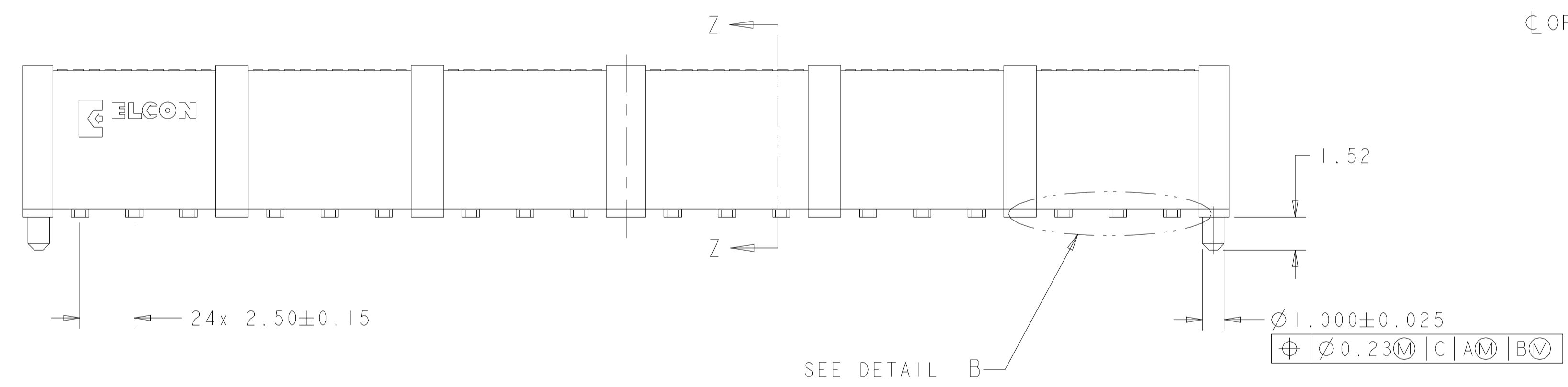


LOC	DIST	REVISIONS					
GP	00	P	LTN	DESCRIPTION	DATE	DWN	APVD
		A		RELEASED PER ECO-09-018442	14AUG2009	RG	RL
		A1		CHANGE PER ECO-09-019916	28AUG2009	MTS	MTS
		A2		ADD NEW DASH NUMBER	22DEC2020	SZ	SZ
		B		ECN-21-103539	30APR2021	RY	SZ



- PART NUMBER CHANGES AND OR DESIGN CHANGES AFFECTING ITEM INTERCHANGEABILITY REQUIRE PRIOR TYCO ELECTRONICS APPROVAL AND AUTHORIZATION BY REVISION TO THIS DRAWING.
- MATERIAL:  
 HOUSING: THERMOPLASTIC GLASS REINFORCED, COLOR-BLACK  
 UL94V-0 FLAMMABILITY RATED  
 CONTACTS: COPPER ALLOY
- FINISH:  
 POWER CONTACTS:  
 1.27µm MIN NICKEL PLATE ALL OVER  
 MATING AREA-0.76µm MIN GOLD OVER NICKEL PLATE  
 SMT TAILS-3.05µm MIN TIN OVER NICKEL PLATE
- ITEMS PROVIDED TO THIS SPECIFICATION TO BE PERMANENTLY IDENTIFIED WITH PART NUMBER AND DATE CODE.
- DATUMS AND BASIC DIMENSIONS ESTABLISHED BY CUSTOMER.
- FOR DESIGN OBJECTIVES SEE 108-2301.
- MAXIMUM BURR OF 0.013 ON CARD TAB AREA.
- CONNECTOR ACCEPTS 1.57±0.13 THK. PC BOARD.
- KEEP OUT AREA FOR COMPONENTS ONLY
- RECOMMENDED GOLD FINGER LENGTH FOR RELIABLE CONTACT.
- CONNECTOR MATES WITH TYCO ELECTRONICS P/N 1926785-1 OR 6651711-1. OR EQUIVALENT.
- MEASURED CENTERLINE OF HOUSING CIRCUIT WITHOUT CONTACTS.

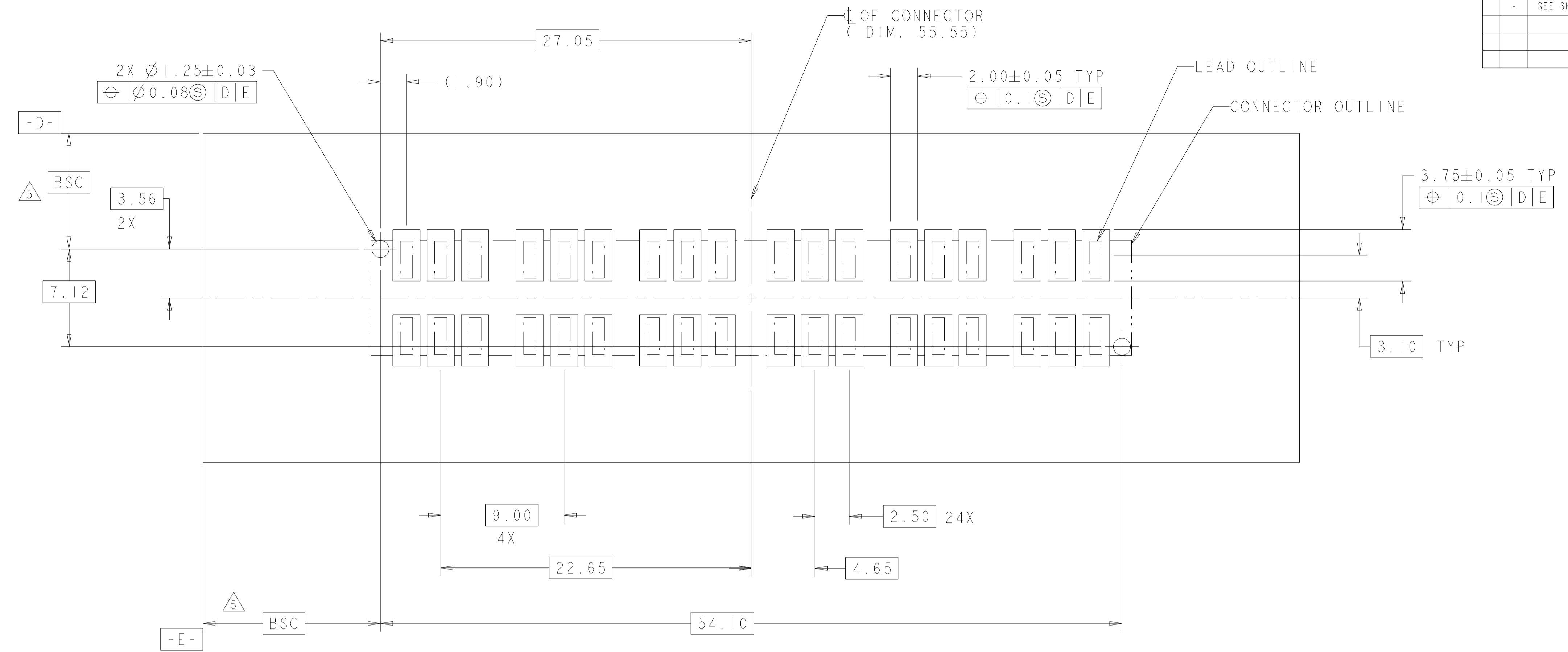


SCALE 4:1

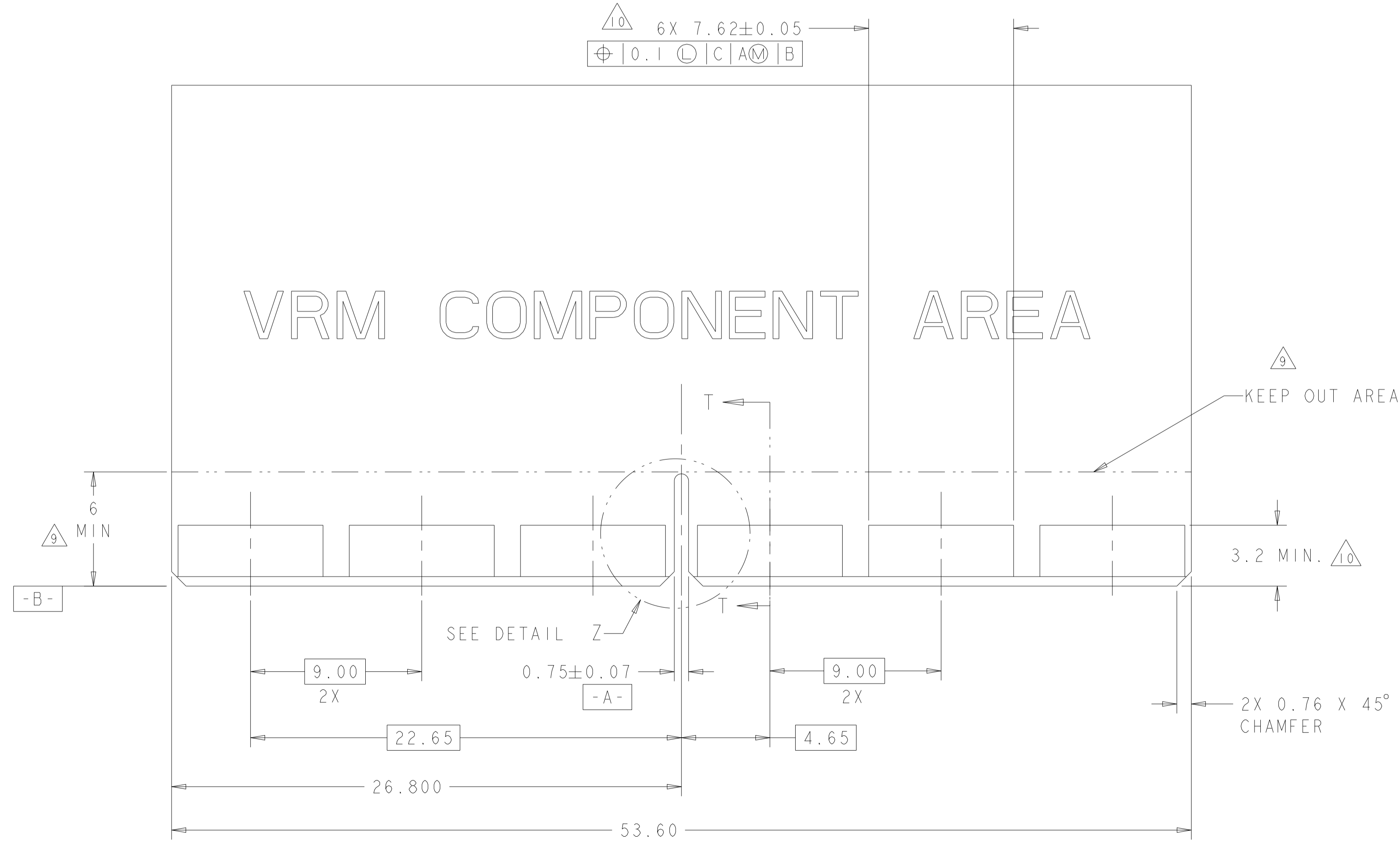
AS SHOWN	1926793-2
DESCRIPTION	PART NUMBER

<small>THIS DRAWING IS UNPUBLISHED. RELEASED FOR PUBLICATION 20. COPYRIGHT 20 BY TYCO ELECTRONICS CORPORATION. ALL RIGHTS RESERVED.</small>		DWN: RICHARD YU 22DEC2020 CHK: SEAN HAN 22DEC2020		Tyco Electronics Harrisburg, PA 17105-3608	
DIMENSIONS: mm 0 PLC ±.5 1 PLC ±.5 2 PLC ±.25 3 PLC ±.5 4 PLC ±.5 ANGLES ±.5 FINISH		TOLERANCES UNLESS OTHERWISE SPECIFIED: ±.5		NAME: SEAN HAN 22DEC2020 PRODUCT SPEC APPLICATION SPEC SIZE: CAGE CODE DRAWING NO A100779C=1926793	
MATERIAL: 2		FINISH: 3		WEIGHT: - CUSTOMER DRAWING SCALE: 6:1 SHEET 1 OF 3 REV B	

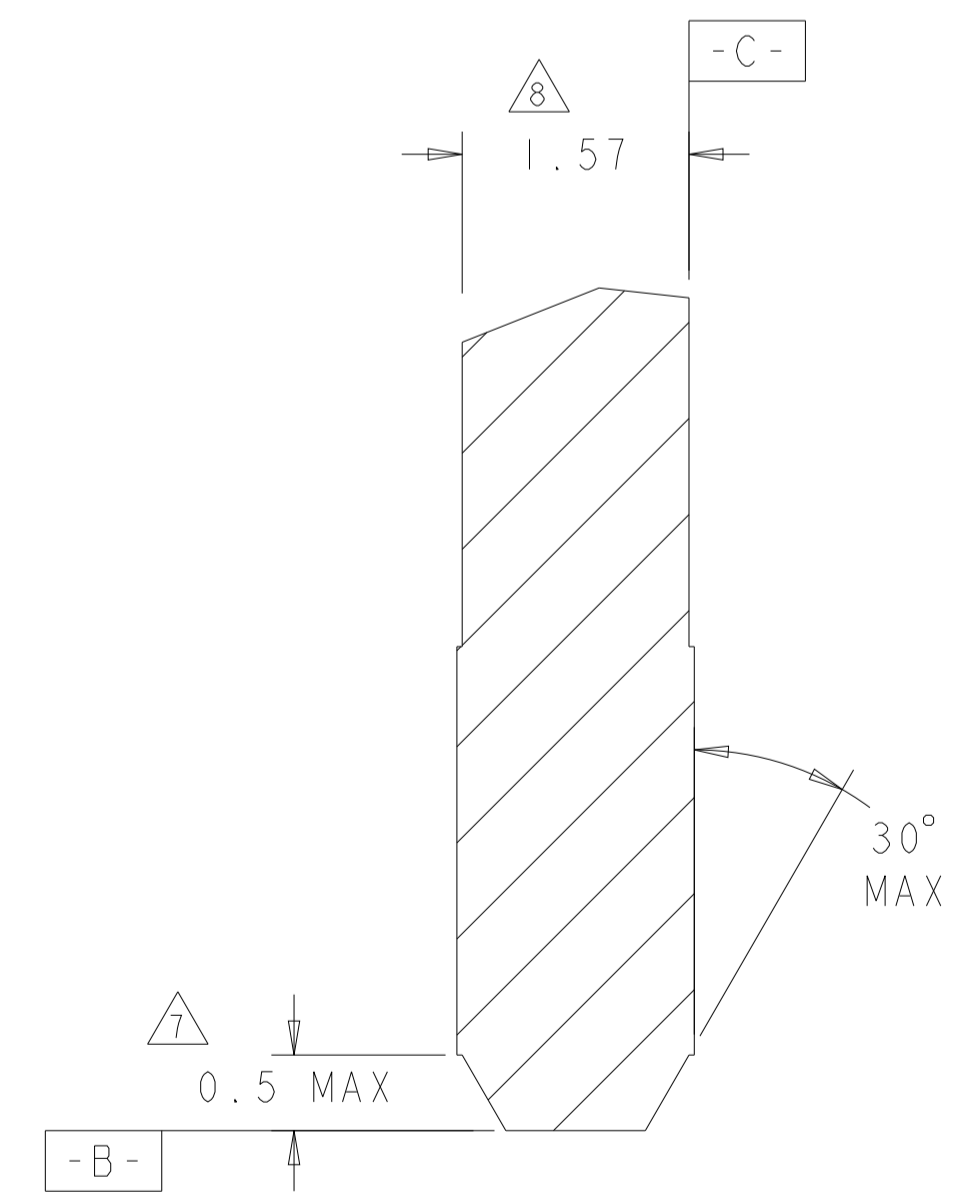
LOC		DIST		REVISONS			
GP	00	P	LTN	DESCRIPTION	DATE	DMN	APVD
-	-	-	-	SEE SHEET 1	-	-	-



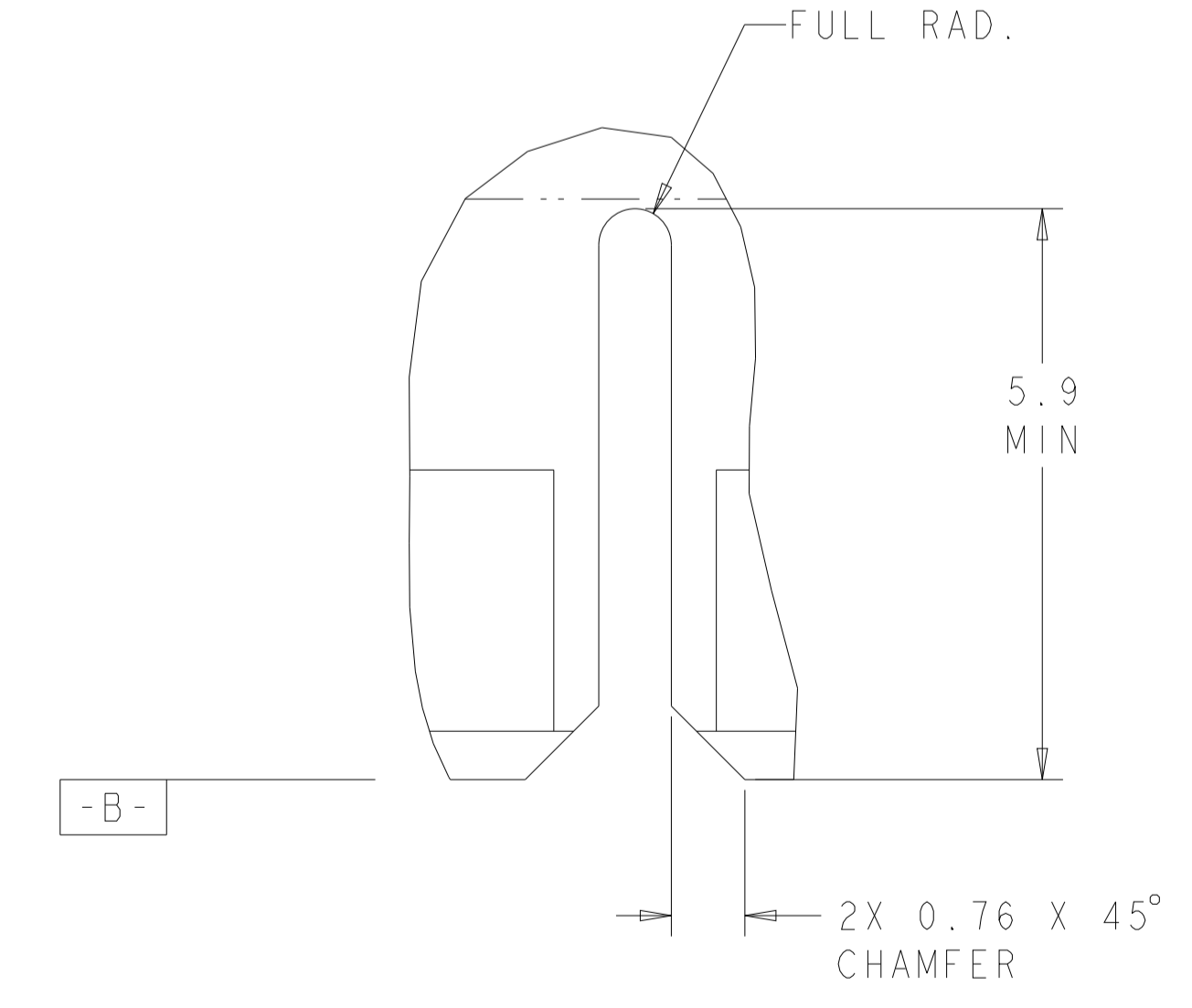
RECOMMENDED SOLDER LAND GUIDELINE  
 AS VIEWED FROM THE CONNECTOR SIDE  
 SCALE 6:1



RECOMMENDED MATING BOARD  
 SCALE 6:1



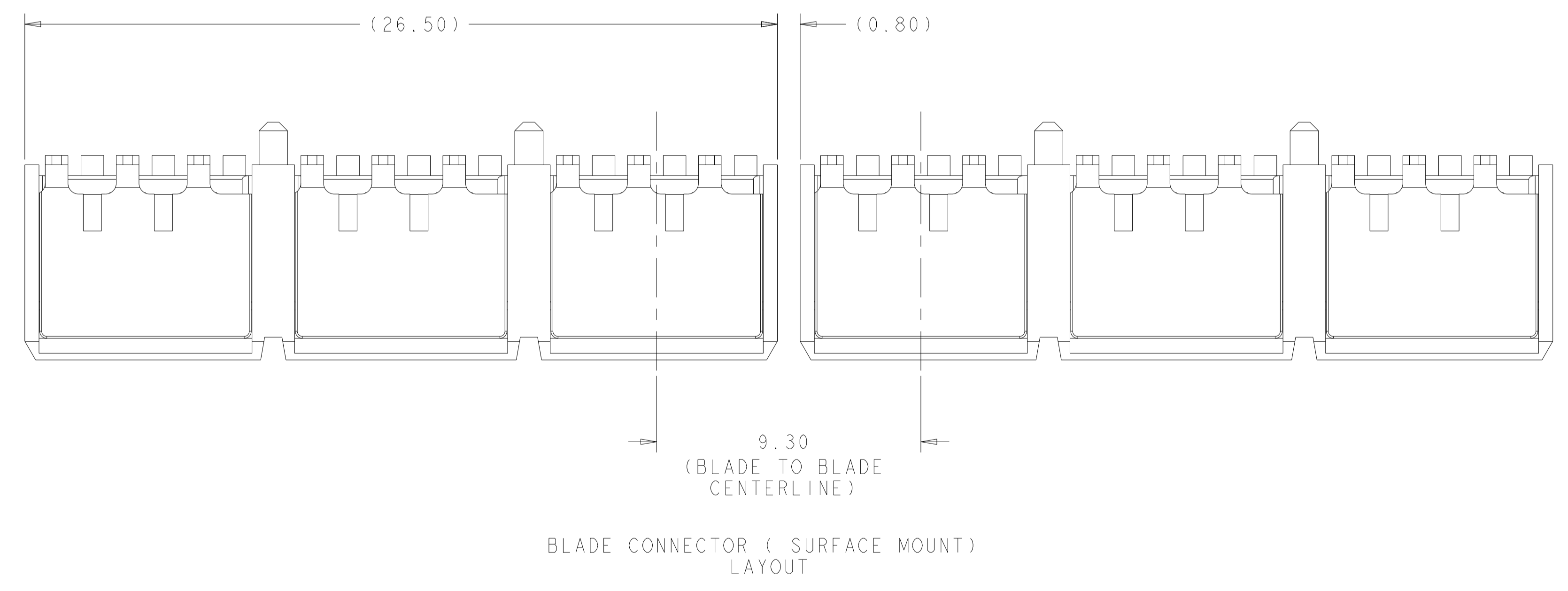
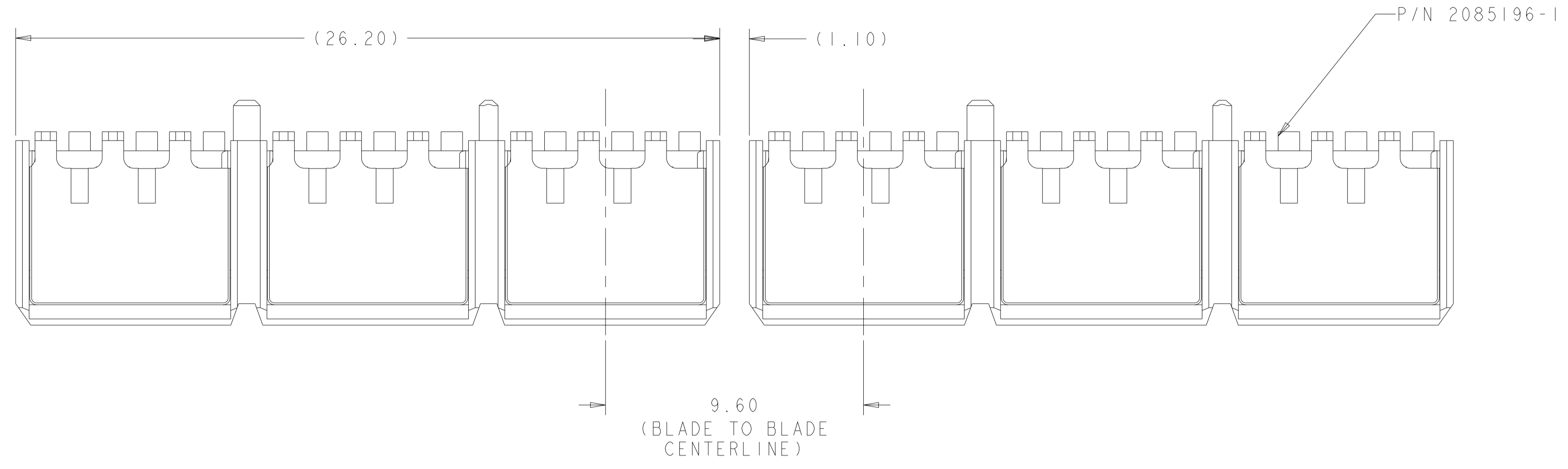
SECTION T-T  
 SCALE 20:1



DETAIL Z  
 SCALE 14:1

DIMENSIONS:		TOLERANCES UNLESS OTHERWISE SPECIFIED:		DWG: RICHARD YU 22DEC2020		CHK: SEAN HAN 22DEC2020		NAME: SOCKET CONNECTOR ASSEMBLY	
mm	0 PLC ±.5	1 PLC ±.5	2 PLC ±.25	3 PLC ±.25	4 PLC ±.25	5 PLC ±.25	6 PLC ±.25	7 PLC ±.25	8 PLC ±.25
MATERIAL:		FINISH:		WEIGHT:		SIZE: A100779		CAGE CODE: 1926793	
CUSTOMER DRAWING		SCALE: 6:1		SHEET: 2 OF 3		REV: B		Tyco Electronics Harrisburg, PA 17105-3608	

LOC	DIST	REVISIONS			
P	LTN	DESCRIPTION	DATE	DMN	APVD
-	-	SEE SHEET 1	-	-	-



<small>THIS DRAWING IS A CONTROLLED DOCUMENT FOR TYCO ELECTRONICS CORPORATION. IT IS THE PROPERTY OF TYCO ELECTRONICS CORPORATION AND IS NOT TO BE REPRODUCED OR TRANSMITTED IN ANY FORM OR BY ANY MEANS, ELECTRONIC OR MECHANICAL, INCLUDING PHOTOCOPYING, RECORDING, OR BY ANY INFORMATION STORAGE AND RETRIEVAL SYSTEM, WITHOUT THE WRITTEN PERMISSION OF TYCO ELECTRONICS CORPORATION.</small>		DWN: RICHARD YU CHK: RICHARD YU ZZDEC2020	Tyco Electronics Harrisburg, PA 17105-3608
DIMENSIONS: mm		TOLERANCES UNLESS OTHERWISE SPECIFIED: 0 PLC ±.5 1 PLC ±.5 2 PLC ±.25 3 PLC ±.5 4 PLC ±.5 ANGLES ±.5 FINISH	APVD: SEAN HAN PRODUCT SPEC APPLICATION SPEC SIZE: A CAGE CODE: 00779 DRAWING NO: 1926793
MATERIAL: -		WEIGHT: -	RESTRICTED TO: - SCALE: 6:1 SHEET: 3 OF 3 REV: B
CUSTOMER DRAWING		NAME: SOCKET CONNECTOR ASSEMBLY SMT 6 POWER, MINI CROWN EDGE	

单击下面可查看定价，库存，交付和生命周期等信息

[>>TE Connectivity\(泰科\)](#)