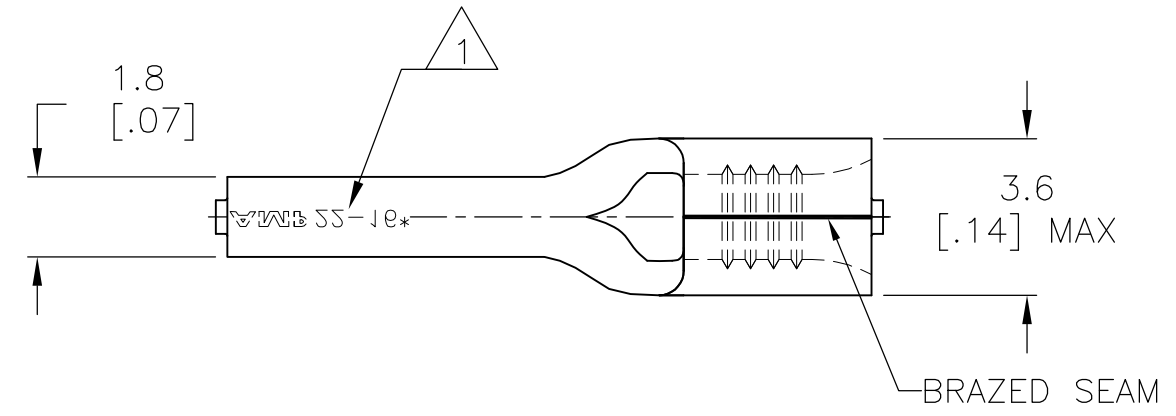


THIS DRAWING IS UNPUBLISHED. RELEASED FOR PUBLICATION  
 © COPYRIGHT - By - ALL RIGHTS RESERVED.

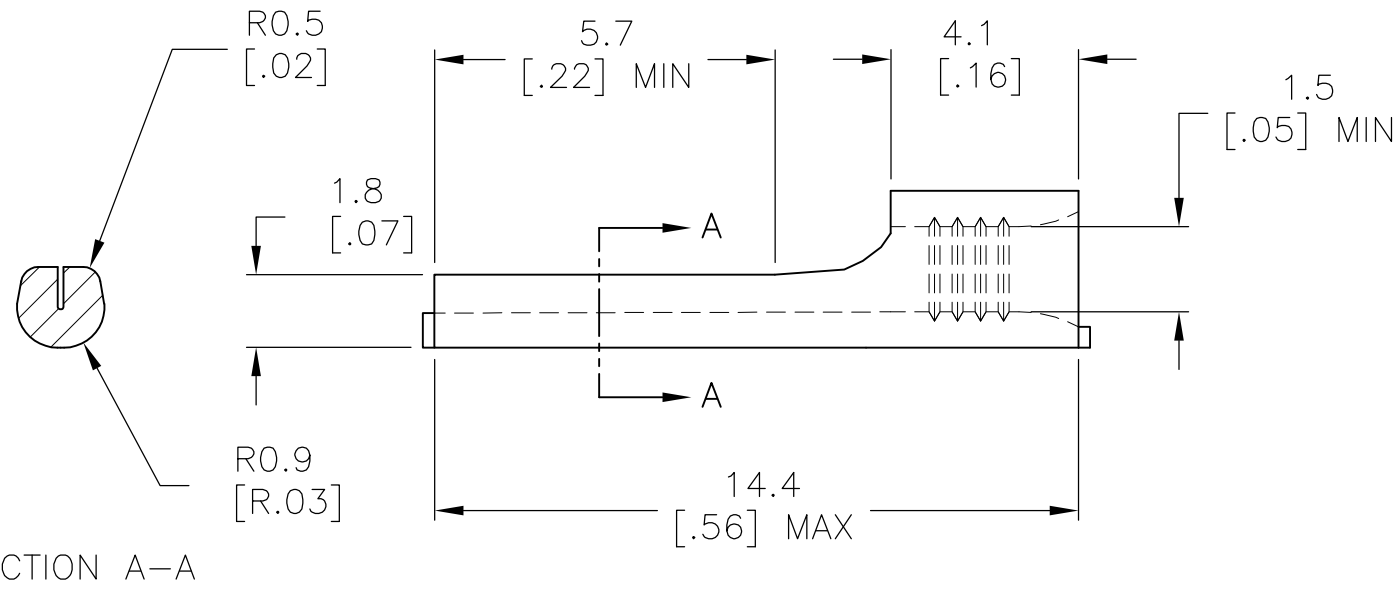
| LOC | DIST | REVISIONS |     |                           |           |     |      |
|-----|------|-----------|-----|---------------------------|-----------|-----|------|
| G   | 86   | P         | LTR | DESCRIPTION               | DATE      | DWN | APVD |
|     |      |           | A1  | REVISED PER ECO-14-003208 | 19MAR2014 | NK  | DR   |

**AMP**  
WIRE RANGE

22-16 AWG  
SOLID OR STRANDED



- 1 STAMP AMP 22-16\* APPROX AS SHOWN
- 2 MAX RECOMMENDED OPERATING TEMPERATURE 170°C [338°F]



|      |              |         |
|------|--------------|---------|
| 1000 | LOOSE PIECE  | 165140  |
| QTY  | PACKAGE TYPE | PART NO |

|   |  |                                   |  |                                 |                    |                                    |               |
|---|--|-----------------------------------|--|---------------------------------|--------------------|------------------------------------|---------------|
| THIS DRAWING IS A CONTROLLED DOCUMENT.  |  | DWN<br>JR RUTH<br>12AUG10         | TE Connectivity<br>NAME<br>TERMINAL, WIRE PIN, SOLISTRAND,<br>WIRE SIZE, 22-16 AWG |                                 |                    |                                    |               |
| DIMENSIONS:<br>mm [INCHES]  |  | CHK<br>TOM MICHIELUTTI<br>12AUG10 |  |                                 |                    | APVD<br>TOM MICHIELUTTI<br>12AUG10 | RESTRICTED TO |
| TOLERANCES UNLESS OTHERWISE SPECIFIED:  |  | PRODUCT SPEC                      |  |                                 |                    | APPLICATION SPEC                   | SIZE          |
| 0 PLC ± -<br>1 PLC ± 0.20 [.007]<br>2 PLC ± -<br>3 PLC ± -<br>4 PLC ± -<br>ANGLES ± - |  | WEIGHT                            |  |                                 |                    | —                                  | CAGE CODE     |
| MATERIAL<br>COPPER PER ASTM B152  |  | FINISH<br>TIN PLATE PER ASTM B545 |  | DRAWING NO<br>A3 00779 C-165140 | RESTRICTED TO<br>— |                                    |               |
| CUSTOMER DRAWING  |  |                                   | SCALE<br>6:1   | SHEET<br>1 OF 1                 | REV<br>A1          |                                    |               |

单击下面可查看定价，库存，交付和生命周期等信息

[>>TE Connectivity\(泰科\)](#)