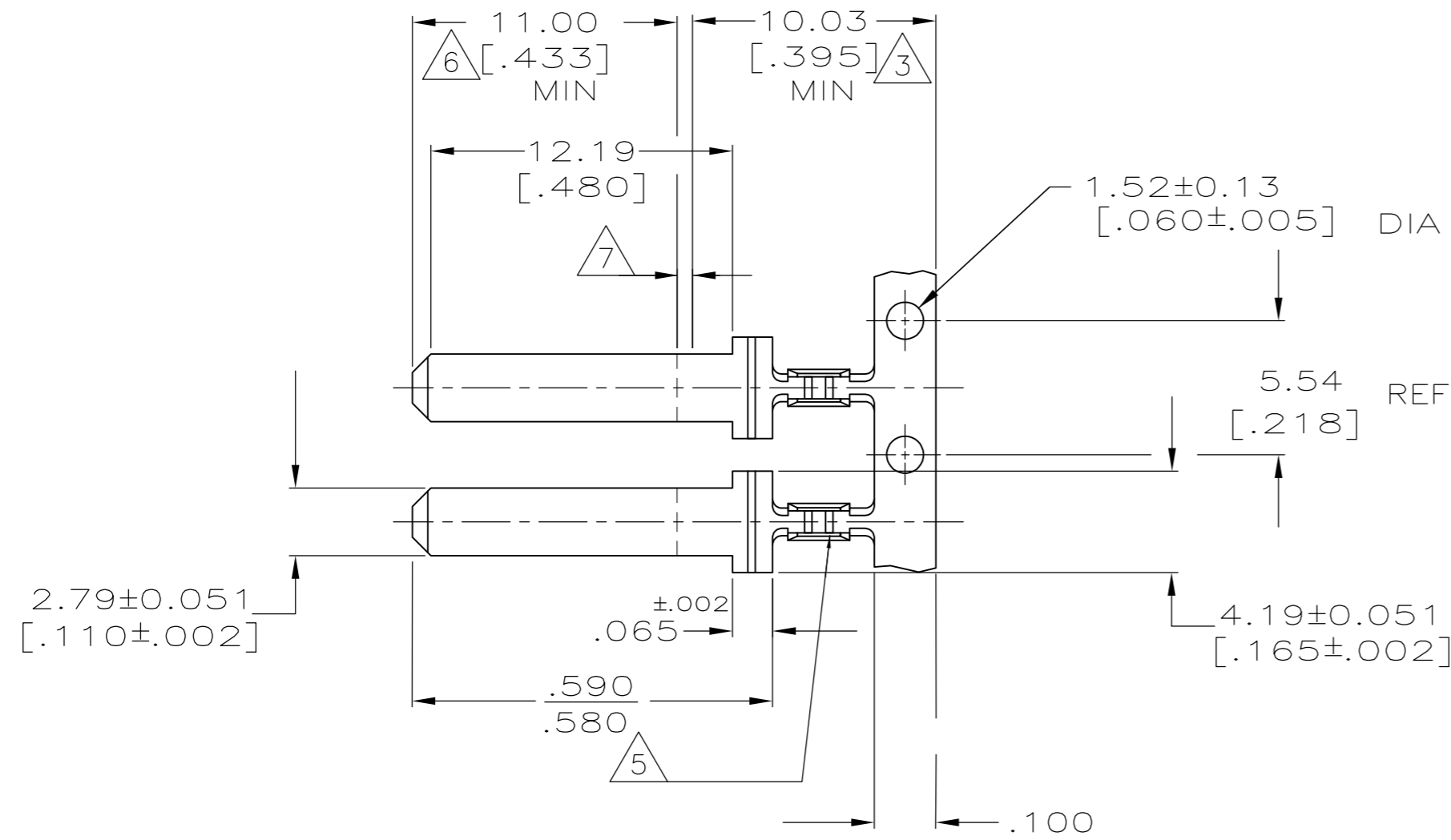
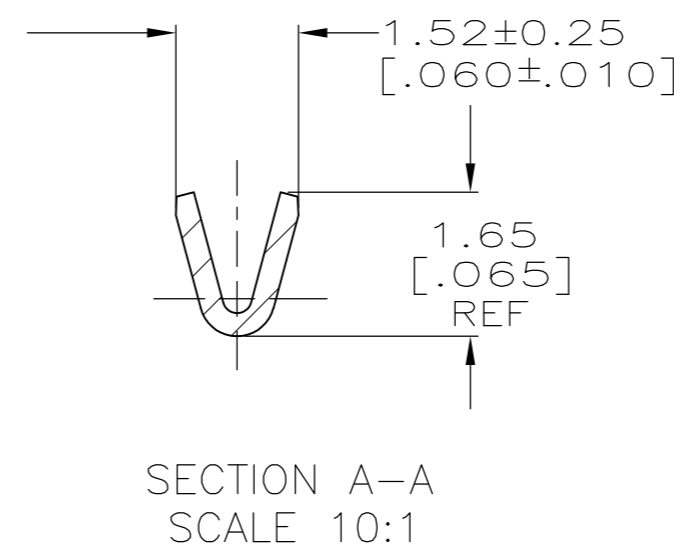
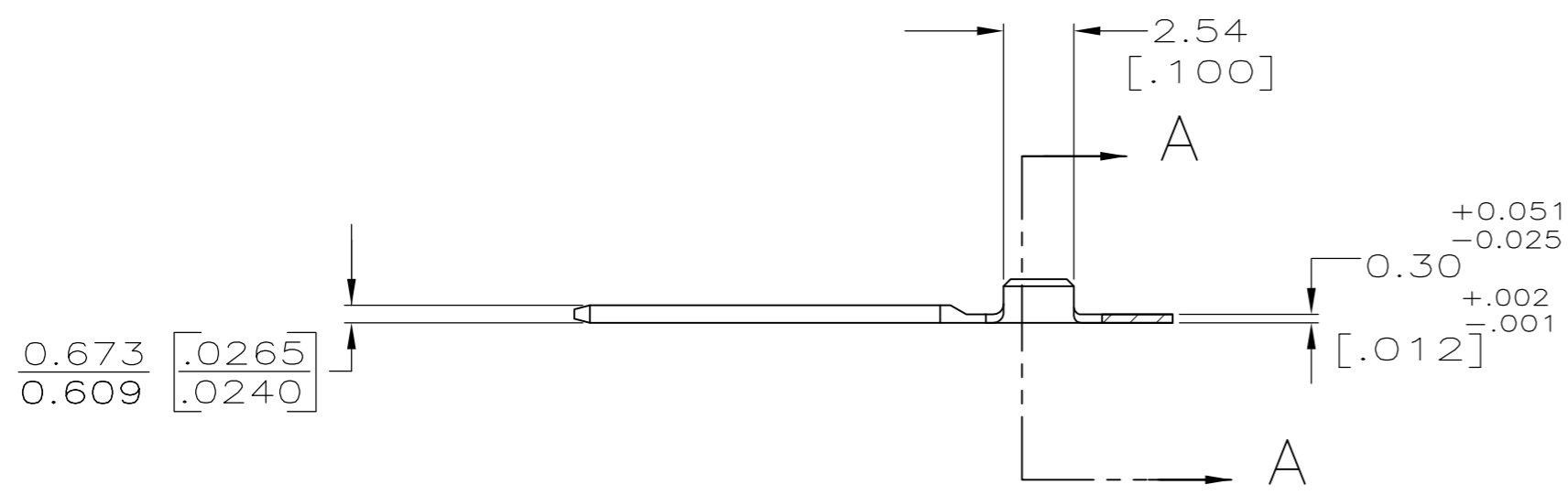


THIS DRAWING IS UNPUBLISHED. RELEASED FOR PUBLICATION  
 © COPYRIGHT - By - ALL RIGHTS RESERVED.

LOC	DIST	REVISIONS			
P	LTR	DESCRIPTION	DATE	DWN	APVD
AF	50	L	REVISED PER ECR-13-011489	30NOV2013	KH PD



- 1 CONTINUOUS STRIP ON REELS.
- 2 0.002032 [.000080] MIN NICKEL UNDERPLATE ALL OVER.
- 3 0.00254-0.00762 [.000100-.000300] THICK TIN LEAD PLATING IN THIS AREA ONLY.
- 4 WIRE SIZE IS #30 SOLID.
- 5 TWO WIRE CRIMP SERRATIONS LOCATED IN THIS AREA.
- 6 0.00076 [.000030] MIN THICK GOLD PLATING IN THIS AREA ONLY.
- 7 SOME BARE NICKEL MAY BE PRESENT AT THE TRANSITION BETWEEN THE GOLD & TIN-LEAD PLATING.



2 3 6 7	63535-3
0.00381 [.000150] MIN TIN	63535-1
FINISH	PART NO.

THIS DRAWING IS A CONTROLLED DOCUMENT.		DWN	JR RUTH	10/29/97	<b>STE</b> TE Connectivity			
DIMENSIONS:		CHK	MS FEHER	10/29/97				
mm [INCHES]		APVD	P DESANTIS	10/29/97				
TOLERANCES UNLESS OTHERWISE SPECIFIED:		PRODUCT SPEC	NAME			TAB, SPECIAL		
	0 PLC	±	-	APPLICATION SPEC	SIZE	CAGE CODE	DRAWING NO	RESTRICTED TO
	1 PLC	±	-	WEIGHT	A2	00779	C=63535	-
	2 PLC	±	0.25 [.010]	CUSTOMER DRAWING	SCALE	4:1	SHEET	1 OF 1
	3 PLC	±	-	FINISH	SEE TABLE	REV	L	
4 PLC	±	-	MATERIAL	BRASS				
ANGLES	±	-						

63535

B

A

单击下面可查看定价，库存，交付和生命周期等信息

[>>TE Connectivity\(泰科\)](#)