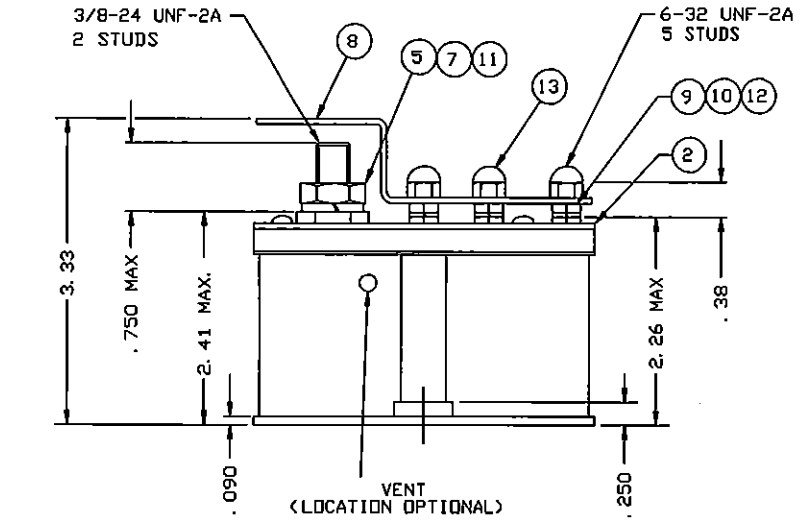
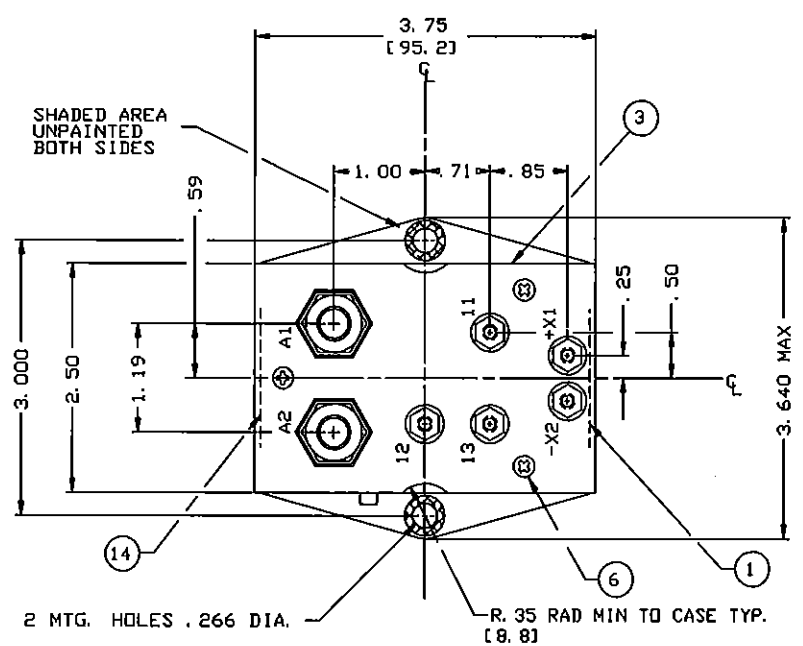
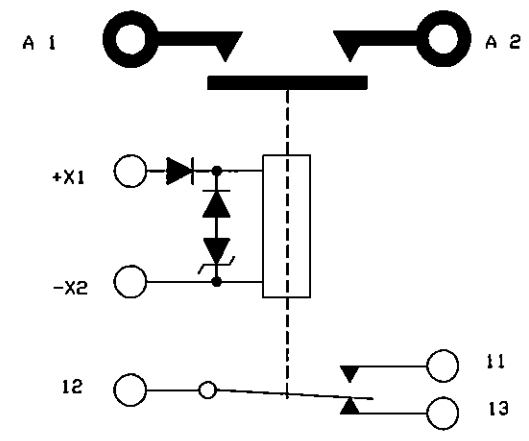


REVISONS		RELEASED		
REV	ECN No.	DESCRIPTION	DATE	APPROVED
B	41115	STEERING DIODE ADDED TO SCHEMATIC	99/11/24	RS
C	43554	5.3 FINISH WAS BLACK EPOXY	00/11/29	RS
D	14-012010	DEL. ITEM 15; ITEM 14 WAS 39529-037 OVERLAY	14/08/08	MDM



- NOTES:
1. THIS UNIT MEETS THE MATERIAL AND WORKMANSHIP REQUIREMENTS OF MIL-R-6106J.
 2. TERMINAL SHIELD, ITEM 8, OMITTED FROM TOP VIEW FOR CLARITY.
 3. SEE SHEET 2 FOR DETAILED SPECIFICATIONS.
 4. DIMENSIONS IN BRACKETS ARE IN MILLIMETERS.



SCHEMATIC DIAGRAM

15							
14	1	48336-004	NAME PLATE		2-1616994-7		
13	5	50406-170	NUT 6-32 HEX. CAP		NYLON		
12	5	51702-204	WASHER-FLAT 3/8 X 9/64 X .032		BRASS		
11	2	51704-024	WASHER-FLAT 5/8 X 25/64 X .062		BRASS		
10	5	50406-034	NUT 6-32 X 5/16 X 5/64 HEX.		BRASS		
9	5	51806-014	WASHER-LOCK NO. 6		BRONZE		
8	1	44198-002	TERMINAL SHIELD				
7	2	51807-084	WASHER-LOCK NO. 3/8 SPLIT TYP.		BRONZE		
6	3	51200-020	SCREW NO. 4 X 1/4 PAN HD.		ST. STEEL		
5	2	50407-164	NUT 3/8-24 X 5/8 X 7/32 HEX		BRASS		
4	1	44178-030	CONTACTOR ASSEMBLY-PRIMARY				
3	1	44179-002	PLATE-WIRING DIAGRAM				
2	1	44088-003	PLATE-BASE COVER				
1	1	16043-094	PLATE-NAME				
FIND NO	QTY REQD	PART OR IDENTIFYING NO	NOMENCLATURE OR DESCRIPTION	FSCM NO	DRAWING OR SPECIFICATION	MATERIAL OR NOTE	
UNLESS OTHERWISE SPECIFIED TOLERANCES ON DIMENSIONS IN INCHES			 23 HORTON ST. DIVISION-175 N. BROAD ST. WASHINGTON, OHIO 44902	CONTACTOR-CONTINUOUS DUTY SPST N. D., 400 AMP, 28VDC 093			
2 PL. DEC.	3 PL. DEC.	ANGLES		DR BY	CSC	00/12/19	SIZE: A CODE IDENT: 74063 DWG NO.: A-400DC
± .06	± .010	± 1°		CHK BY	CC	00/12/19	
UNLESS OTHERWISE SPECIFIED TOLERANCES ON DIMENSIONS IN MM			ENGR	JL	00/12/20		
UNLESS OTHERWISE SPECIFIED TOLERANCES ON DIMENSIONS IN MM			MFG	NH	00/12/21	REF TE P/N: 1616056-6	
2 PL. DEC. 3 PL. DEC. ANGLES			RELEASE				
± 1.5	± .25	± 1°	CONTR NO.				
			GOVT APPVL				
			SCALE NONE	SHEET 1 OF 2			

DETAIL SPECIFICATIONS

REVISIONS		RELEASED	APPROVED
REV	ECN No.	DESCRIPTION	DATE
D	14-012010	SEE SHEET 1 FOR REVISIONS	14/08/08

- 1.0 ELECTRICAL (<25°C)
- 1.1 NOM OPERATING VOLTAGE 28 VDC
 - 1.2 MAX OPERATING VOLTAGE 32 VDC
 - 1.3 PICK-UP VOLTAGE <MAX> SEE TABLE 1
 - 1.4 DROP-OUT VOLTAGE SEE TABLE 1
 - 1.5 COIL RESISTANCE (<±10%) 60 OHMS
 - 1.6 COIL CURRENT <MAX> 0.6 AMP
 - 1.7 DUTY CONTINUOUS
- 2.0 CONTACT DATA
- | | MAIN | AUX (<SEE NOTES>) |
|--|----------|-------------------|
| 2.1 CONTACT RATING | 28 VDC | 28 VDC |
| 2.1.1 RESISTIVE | 400 AMP | 5 AMP |
| 2.1.2 INDUCTIVE | 150 AMP | 3 AMP |
| 2.1.3 MOTOR | 250 AMP | - |
| 2.1.4 OVERLOAD | 3200 AMP | - |
| 2.1.5 RUPTURE | 4000 AMP | - |
| 2.1.6 MINIMUM OPERATING CYCLE <LIFE> AT RATED RES/MOTOR LOAD | 50,000 | |
| 2.1.7 MINIMUM OPERATING CYCLE <LIFE> AT RATED INDUCTIVE LOAD | 20,000 | |
| 2.1.8 MECHANICAL LIFE <75 AMP> | 100,000 | |
- 3.0 ENVIRONMENTAL DATA
- 3.1 AMBIENT TEMPERATURE RANGE -55°C - +71°C
 - 3.2 ALTITUDE 50,000 FEET
 - 3.3 DIELECTRIC STRENGTH

	SEA LEVEL	ALTITUDE
3.3.1 COIL TO CASE	1250 VRMS	1000 VRMS
3.3.2 ALL OTHER POINTS	1500 VRMS	500 VRMS
 - 3.4 INSULATION RESISTANCE 100 MEGOHMS INITIAL
50 MEGOHMS AFTER LIFE TEST
 - 3.5 VIBRATION <SINUSOIDAL> .06 D. A., 5 - 55 HZ
10 G, 55 - 500 HZ
 - 3.6 SHOCK <6 - 9 MILLISECONDS> 25 G
 - 3.7 ACCELERATION <MAX> 15 G

- 4.0 OPERATING DATA (<25°C AND 28 VDC)
- 4.1 OPERATE TIME <MAX> .035 SEC.
 - 4.2 RELEASE TIME <MAX> .015 SEC.
 - 4.3 CONTACT BOUNCE TIME <MAX> .004 SEC.
- 5.0 PHYSICAL DATA
- 5.1 WEIGHT <MAX> 1.45 LB
 - 5.2 TERMINAL STRENGTH PER THE REQUIREMENTS OF MIL-R-6106J
PARA. 3.4.8
BLACK LACQUER
GASKET SEALED/VENTED
PER MIL-STD-130
 - 5.3 FINISH
 - 5.5 MARKING PER MIL-STD-130

- 6.0 NOTES
- 6.1 AUXILIARY CONTACTS ARE GOLD PLATED FOR LOW LEVEL 28 VDC LOADS OF 7 -100 mA. EXCEEDING THIS LOW LEVEL RATING MAY DISPLACE THE GOLD PLATING AND RESULT IN UNRELIABLE LOW LEVEL SWITCHING.
 - 6.2 AUXILIARY CONTACTS WILL NOT RETURN TO THE NORMAL <DE-ENERGIZED> POSITION IF THE MAIN CONTACTS ARE TACK WELDED.

TABLE 1

COIL VOLTAGE <VDC> OVER TEMPERATURE RANGE					
MAX PICKUP VOLTAGE			MAX HOLD VOLTAGE		MINIMUM DROPOUT VOLTAGE
NORMAL	HIGH TEMP	CONT CURRENT	HIGH TEMP	CONT CURRENT	
14	18	21	7	9	1.0

REF.	HARTMAN® MANSFIELD, OHIO				
DR BY	CSC	00/12/19	CONTACTOR-CONTINUOUS DUTY		
CHK BY			SPST N. O., 400 AMP, 28 VDC		
ENGR					093
MFG					
RELEASE	SIZE	CODE IDENT	DWG NO.		
CONTR NO.	A	74063	A-400DC		
GOVT APPVL	SCALE	NONE	SHEET 2 OF 2		

单击下面可查看定价，库存，交付和生命周期等信息

[>>TE Connectivity\(泰科\)](#)