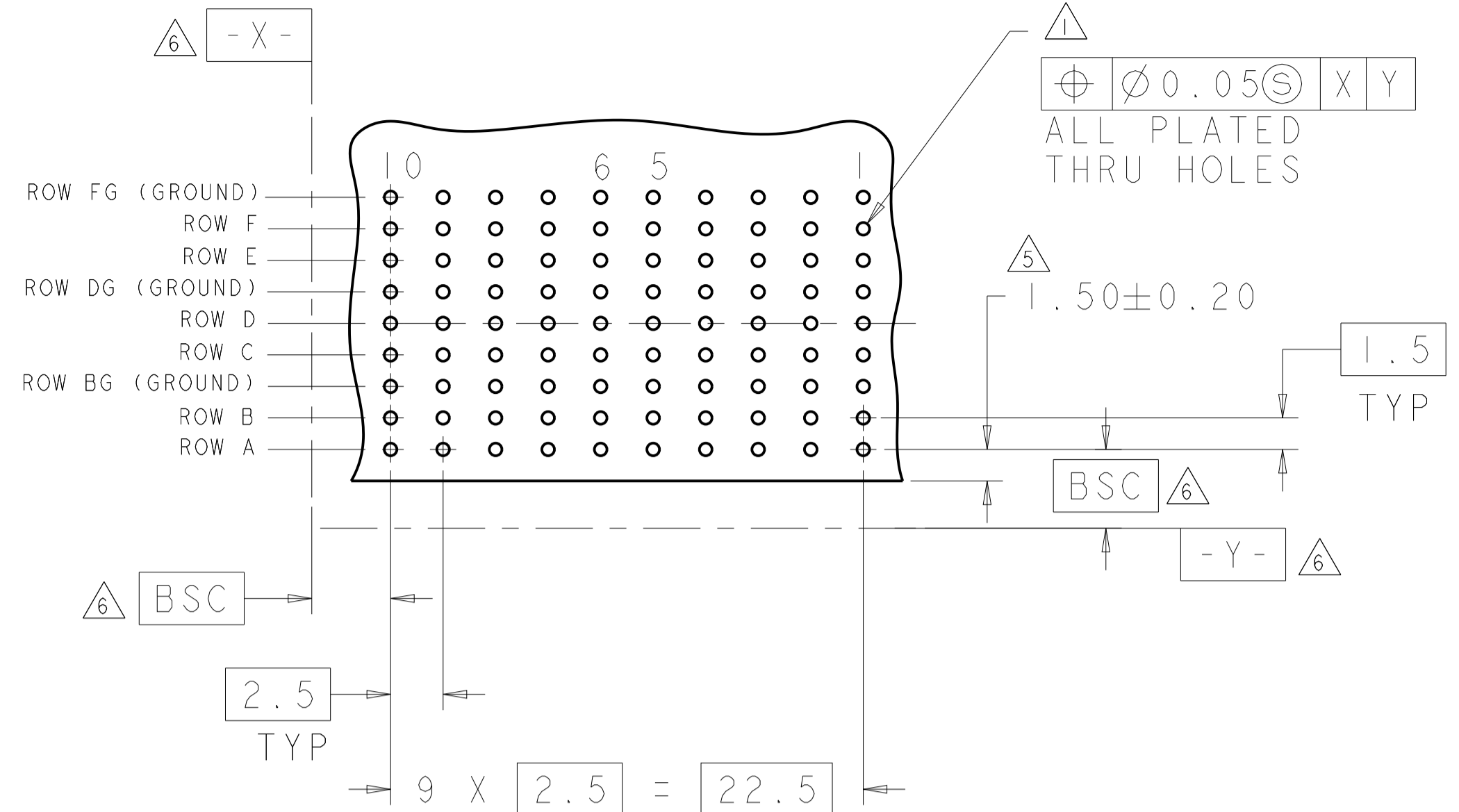
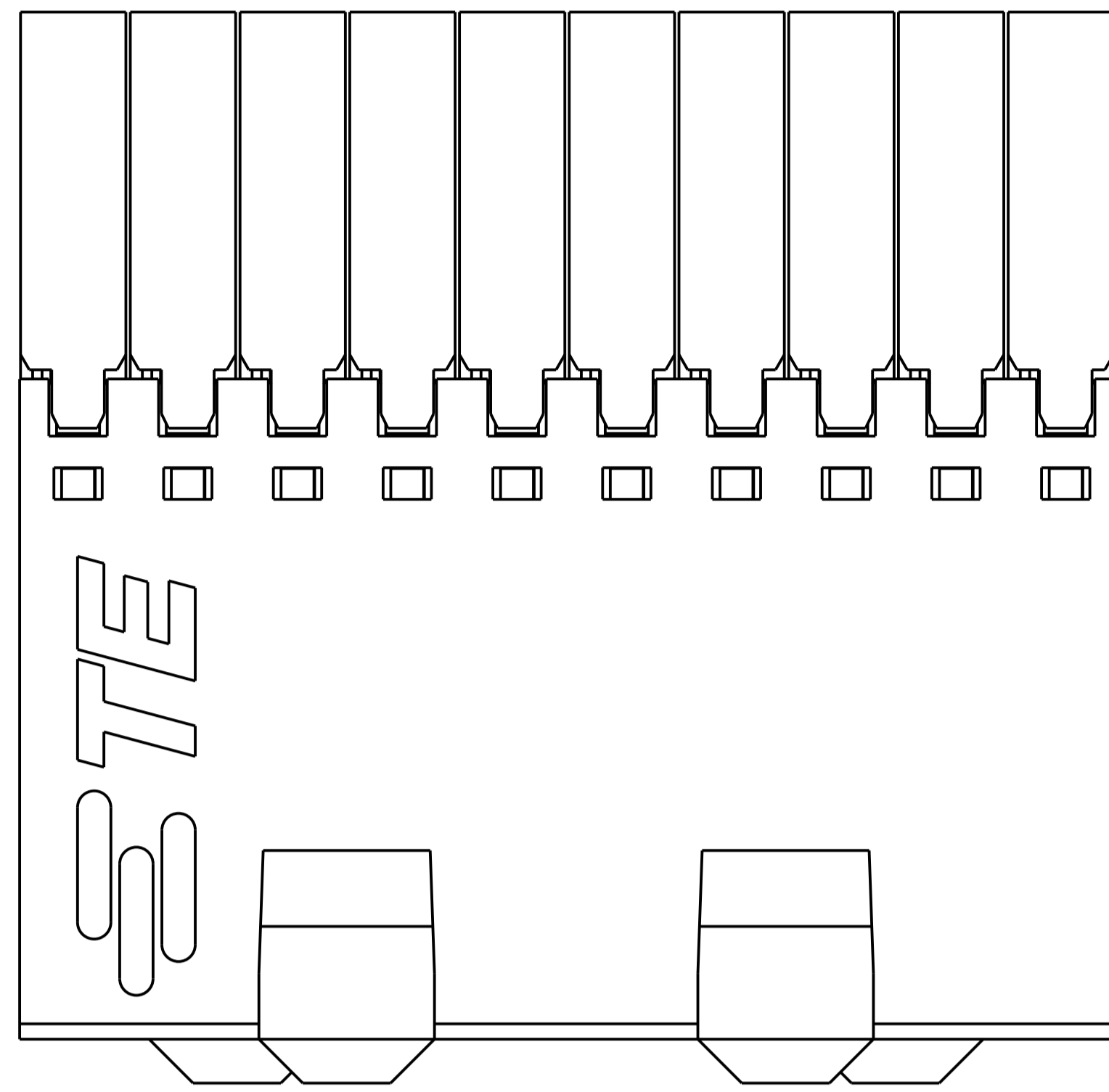
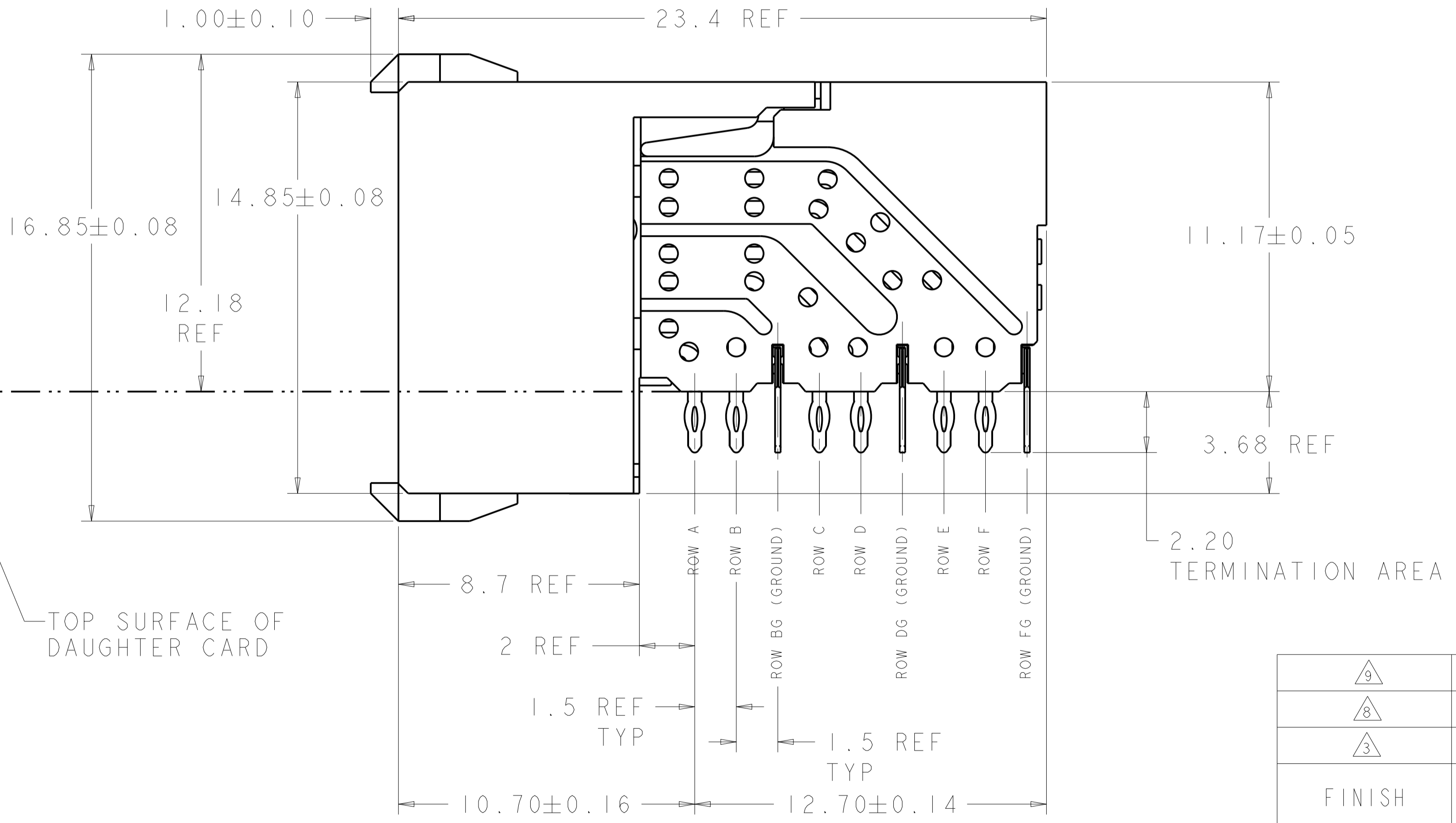
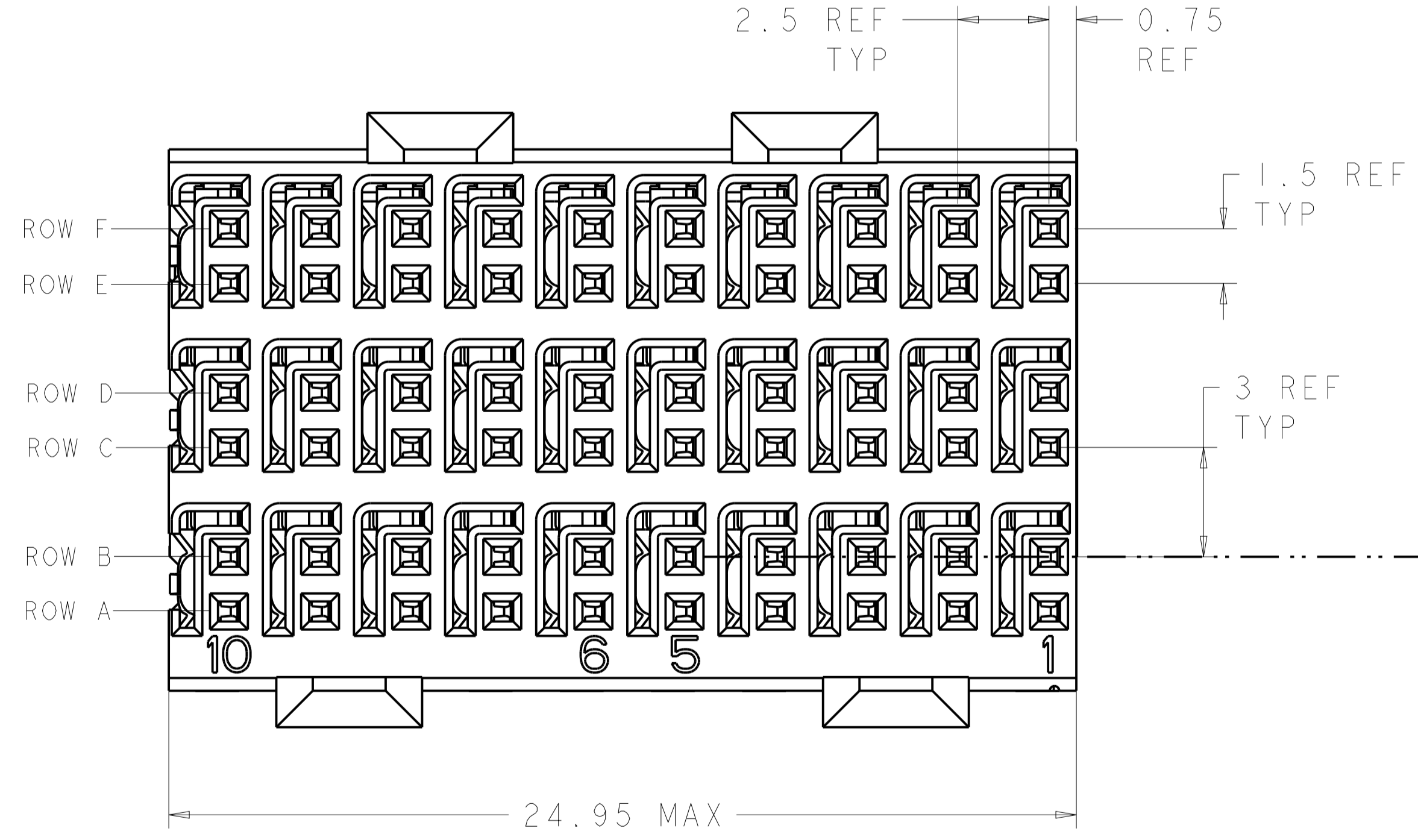


REVISIONS				
P.	LTN.	DESCRIPTION	DATE	APVD.
J		REVISED PER ECN-21-105110	02JUN2021	RZ HL



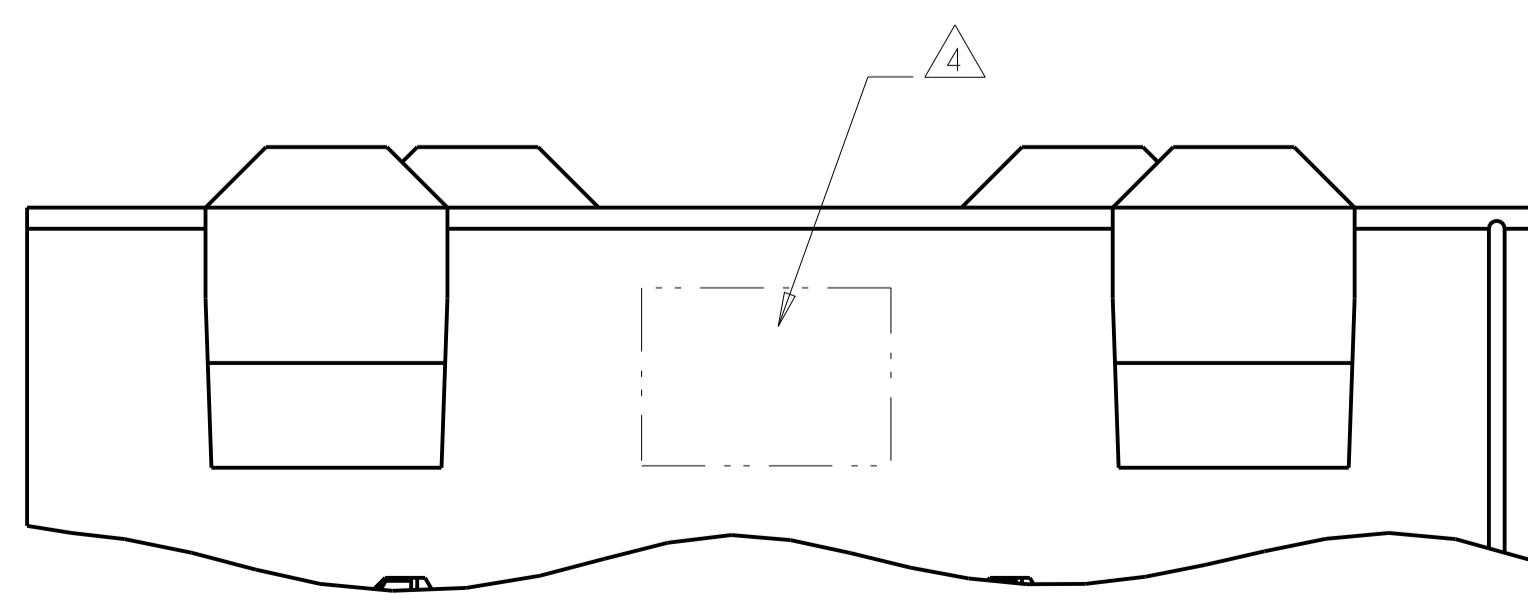
RECOMMENDED PC BOARD LAYOUT,
 DAUGHTER BOARD,
 COMPONENT SIDE SHOWN
 SCALE 4:1

- △ REFERENCE APPLICATION SPEC 114-13059 FOR RECOMMENDED PLATED THRU HOLE DIAMETER AND PLATING THICKNESSES.
- △ MATERIAL:
 SHIELD - PHOSPHOR BRONZE
 CONTACT - COPPER-NICKEL-SILICON
 HOUSING, CHICKLET AND CHICKLET COVER - GLASS FILLED POLYESTER, UL 94V-0 RATED.
- △ FINISH: SIGNAL AND GROUND CONTACTS:
 MATING AREA: MEETS THE PERFORMANCE REQUIREMENTS OF PRODUCT SPECIFICATION 108-2055; BASED ON TELCORDIA GR-1217-CORE, APPLICATIONS IN UNCONTROLLED ENVIRONMENTS
 COMPLIANT PIN AREA: 0.5µm MIN BRIGHT TIN-LEAD OVER BASE PLATING
- △ CONNECTOR MARKED WITH PART NUMBER AND DATE CODE IN APPROXIMATE AREA SHOWN.
- △ DIMENSION APPLIES TO CENTERLINE OF THRU HOLE
- △ DATUMS AND BASIC DIMENSIONS ESTABLISHED BY CUSTOMER
- 7. CONTACT AREA LUBRICATED WITH BELLCORE APPROVED LUBRICANT. TECHNICAL REFERENCE: GR-1217-CORE, ISSUE 1, NOVEMBER 1995.
- △ FINISH: CONTACT AND SHIELD
 MATING AREA - 1.27µm MIN GOLD OVER 1.27µm MIN NICKEL
 COMPLIANT PIN AREA - 0.5µm MIN BRIGHT TIN-LEAD OVER 1.27µm MIN NICKEL
- △ FINISH: CONTACT AND SHIELD
 MATING AREA - 1.27µm MIN GOLD OVER 1.27µm MIN NICKEL
 COMPLIANT PIN AREA - 0.5µm MIN TIN/LEAD OVER 1.27µm MIN NICKEL
 NO LUBRICANT



TOP SURFACE OF DAUGHTER CARD

△9	1469081-3
△8	1469081-2
△3	1469081-1
FINISH	PART NUMBER



THIS DRAWING IS A CONTROLLED DOCUMENT.		OWN S. MAGARO 13MAY2002	NAME RECEPTACLE ASSEMBLY, 3 PAIR, 25mm, HMZd
DIMENSIONS: mm		CHK N. SCHROLL 13MAY2002	RESTRICTED TO
TOLERANCES UNLESS OTHERWISE SPECIFIED:		APVD P. PATTERSON 16MAY2007	SCALE 8:1 SHEET 1 OF 1 REV J
0 PLC	±	PRODUCT SPEC	
1 PLC	±	108-2055	
2 PLC	±	APPLICATION SPEC	
3 PLC	±	114-13059	
4 PLC	±	WEIGHT	
ANGLES	±	CUSTOMER DRAWING	
MATERIAL	SEE TABLE	SIZE A100779	

单击下面可查看定价，库存，交付和生命周期等信息

[>>TE Connectivity\(泰科\)](#)