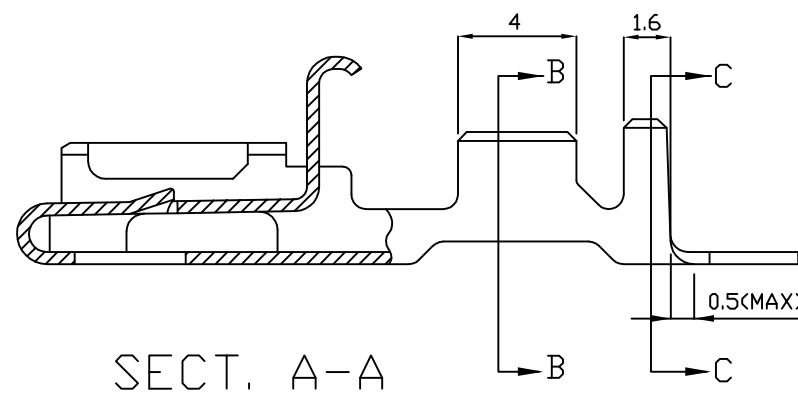
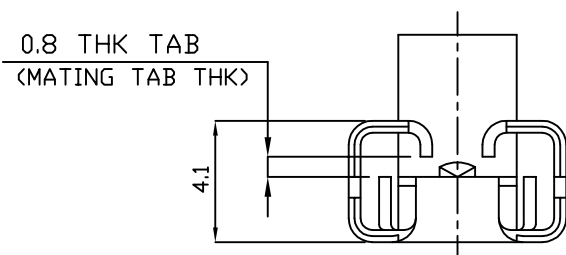
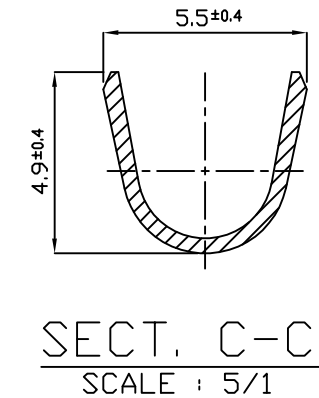
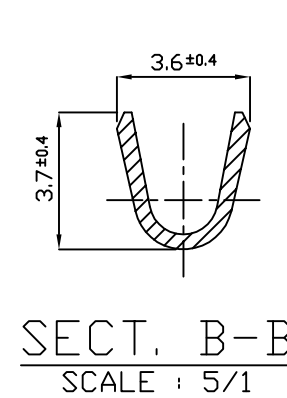
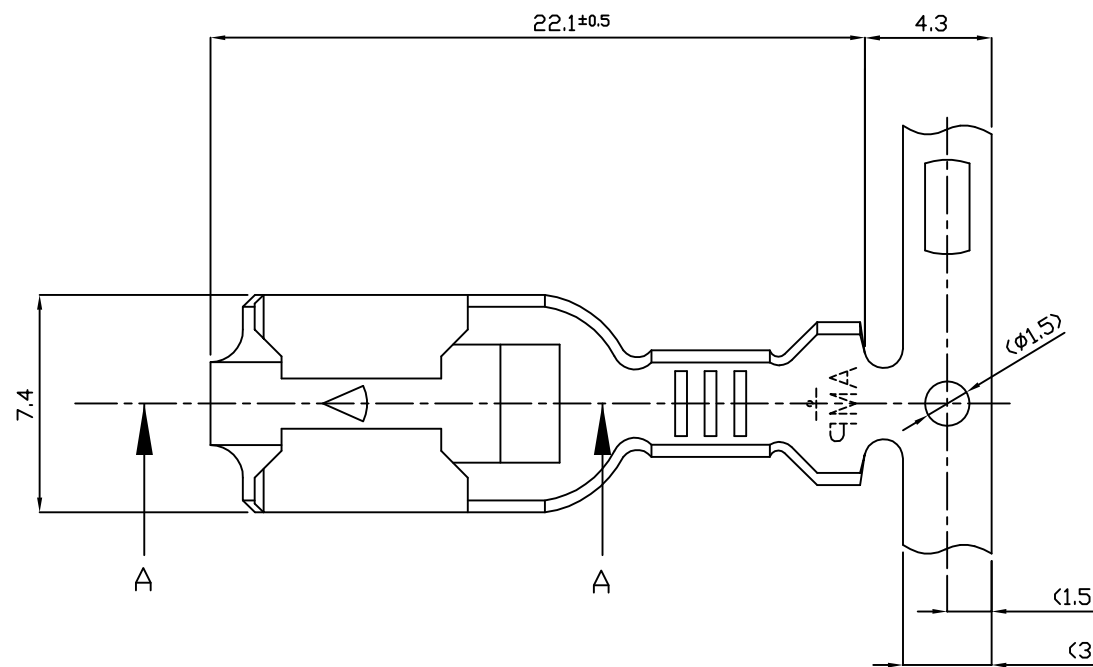


THIS DRAWING IS UNPUBLISHED. RELEASED FOR PUBLICATION
 © COPYRIGHT BY TYCO ELECTRONICS CORPORATION. ALL RIGHTS RESERVED.

LOC	DIST	REVISIONS					
		P	LTR	DESCRIPTION	DATE	DWN	APVD
DS	-		0	REDRAWN PER ECN P93-074	11.SEP.'93	YM	CS
			01	REVISED (ECR-10-022192)	28.OCT.'10	KT	HG



NOTE;

1. APPLICABLE HSG PN: 171809, 171810, 171848, 154719
2. APPL FEED: 20mm

PRE-TINNED	BRASS	85033-1
FINISH	MATERIAL	PART NO.

THIS DRAWING IS A CONTROLLED DOCUMENT FOR TYCO ELECTRONICS CORPORATION IT IS SUBJECT TO CHANGE AND THE CONTROLLING ENGINEERING ORGANIZATION SHOULD BE CONTACTED FOR THE LATEST REVISION.

DIMENSIONS: MM	TOLERANCES UNLESS OTHERWISE SPECIFIED:
	0 <XX<10 ± 0.2 10<XX<30 ± 0.25 30<XX<100 ± 0.3 ANGLES ± 3°
MATERIAL SEE TABLE	FINISH

DWN KT JUNG	TE Connectivity NAME 250 POSITIVE LOCK RECEP.					
CHK KT LIM						
APVD HG CHD						
PRODUCT SPEC -						
APPLICATION SPEC 114-61000-1	SIZE A3	CAGE CODE 00779	DRAWING NO C-85033	RESTRICTED TO -		
WEIGHT -	CUSTOMER DRAWING			SCALE 4/1	SHEET 1 OF 1	REV 01

单击下面可查看定价，库存，交付和生命周期等信息

[>>TE Connectivity\(泰科\)](#)