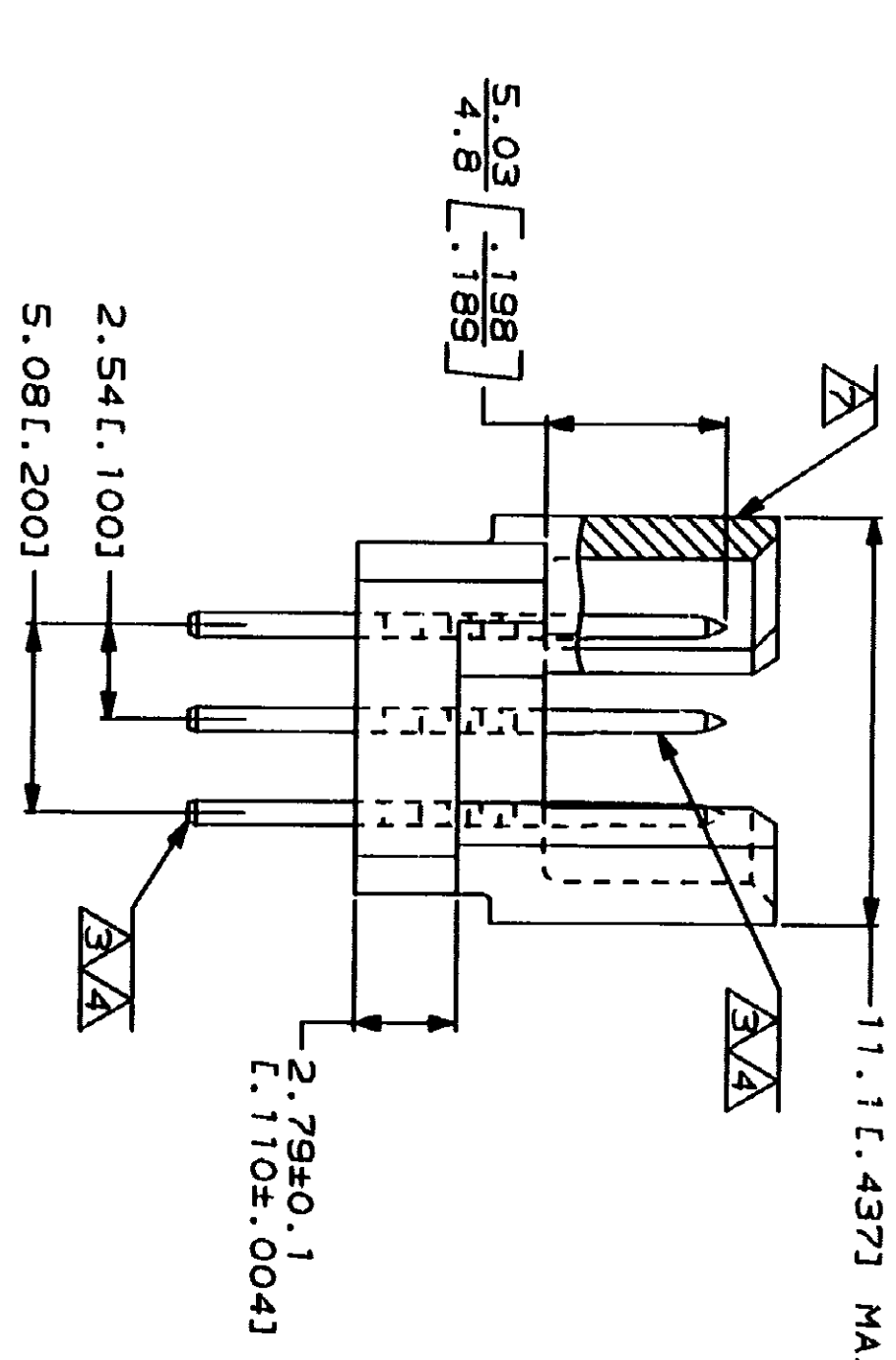


PC BOARD LAYOUT

- △ HOUSING MATERIAL: GLASS-FILLED POLYESTER. COLOR: GRAY.
- △ POST MATERIAL: BRASS.
- △ POST FINISH: DIN 41612 CLASS 3 IN CONTACT AREA.
- △ TIN-LEAD PLATE ON POSTS.
- △ POST FINISH: DIN 41612 CLASS 2 IN CONTACT AREA.
- △ TIN-LEAD PLATE ON POSTS.
- △ RECOMMENDED HOLE SIZE FOR MANUAL APPLICATION OF CONNECTOR ONTO PC BOARD.
- △ [PART NUMBER, DATE CODE] MARKED THIS APPROXIMATE AREA.
- △ MARKING ON THIS SIDE.



| REV | DATE | APPRO | DESCRIPTION |
|-----|----------|-------|---------------------|
| 0 | 8/10/91 | LSB | DRAWN |
| B | 8/10/91 | LSB | ECN AD55986, ASS640 |
| C | 11/14/91 | LSB | ECN AD5876 |
| D | 10/20/91 | LSB | ECN AD5871 |
| E | 8/28/91 | LSB | ECN AD6256 |
| F | 11/28/91 | LSB | EC 0010-1559-93 |
| G | 3/26/94 | LSB | EC 0010-0436-94 |

SUPERSEDED BY 650477-5

| REV | DATE | APPRO | DESCRIPTION |
|-----|------|-------|-------------|
| A | 1-16 | X | 48 |
| A | 1-16 | X | 48 |

| DO NOT SCALE PRINT. | DR | DATE | NAME |
|--|----------------|---------|---------------------------|
| DIMENSIONS IN PARENTHESIZED DIMENSIONS IN INCHES | L. BRINER | 3/18/91 | AMP |
| TOLERANCES UNLESS OTHERWISE SPECIFIED | D.C. RUBENHALL | 3/26/91 | AMP Incorporated |
| 1. PLC DEC ± 0.131, 0051 | D.C. RUBENHALL | 3/26/91 | Harrisburg, PA 17105-3608 |
| 2. PLC DEC ± 0.131, 0051 | K.R. PARTNER | 3/26/91 | |
| ANGLES | | | |
| MATERIAL | | | |
| HOUSINGS, △ | | | |
| POSTS, △ | | | |
| FINISH | | | |
| POSTS, △/△ | | | |

| SIZE | CAGE CODE | DRAWING NO | PART NO |
|-------|-----------|------------|---------|
| D | 00779 | 650477 | AMP |
| SCALE | 5:1 | SHEET | 1 OF 1 |

单击下面可查看定价，库存，交付和生命周期等信息

[>>TE Connectivity\(泰科\)](#)