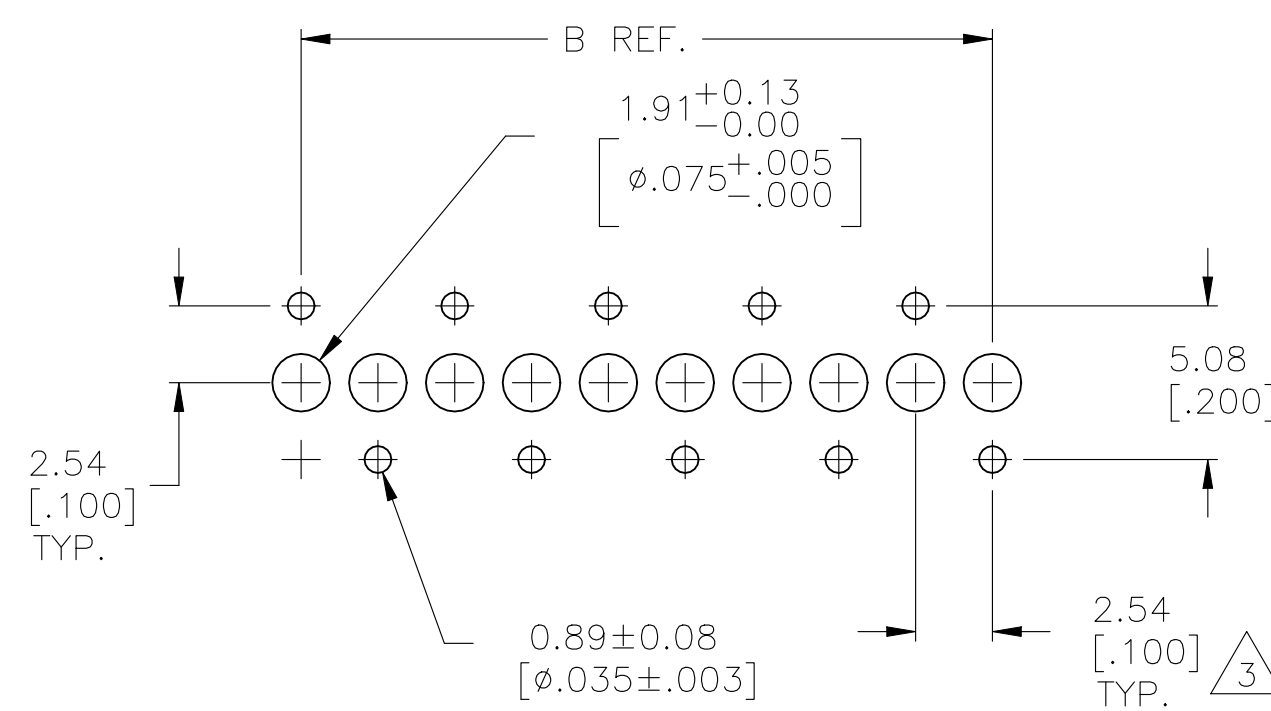
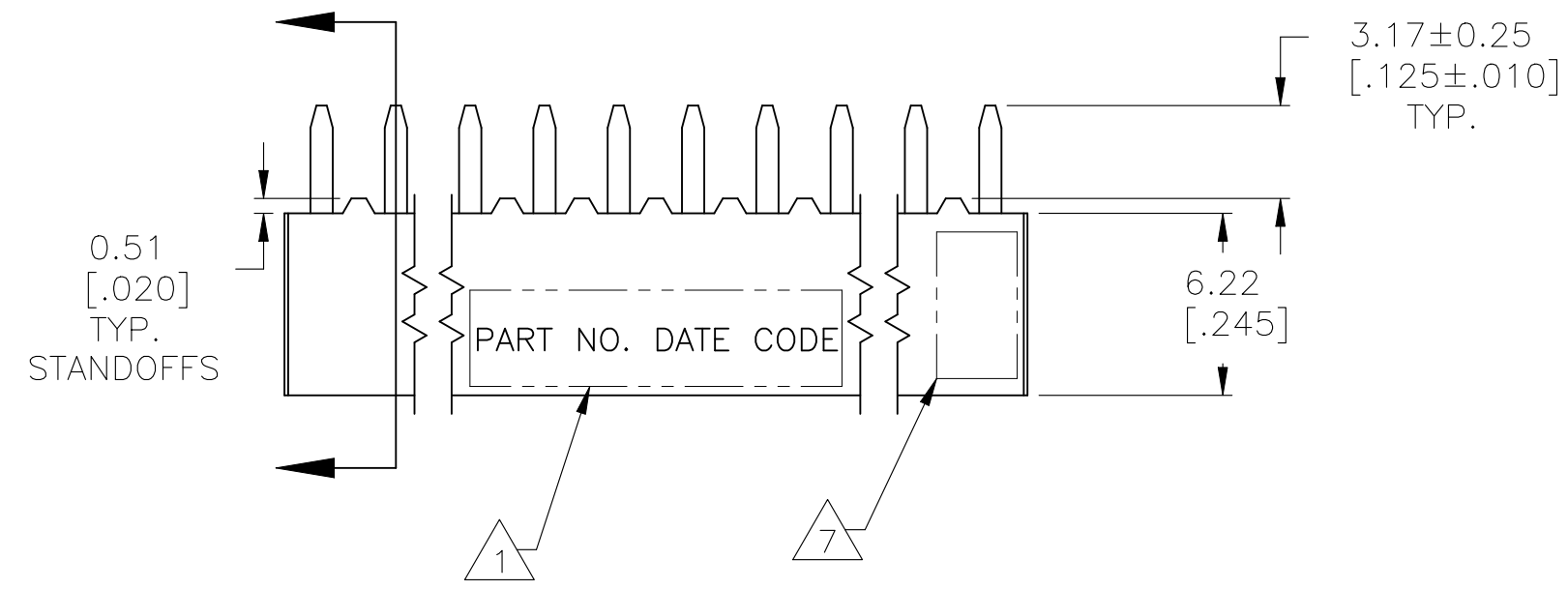
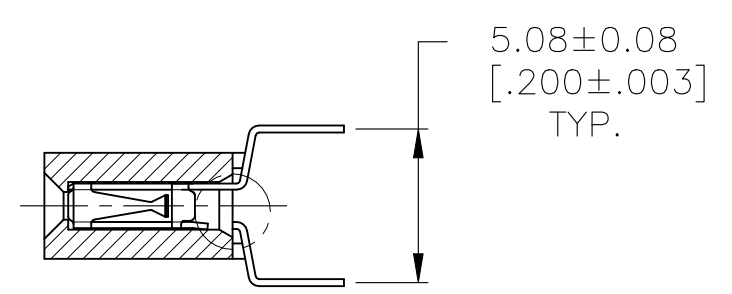
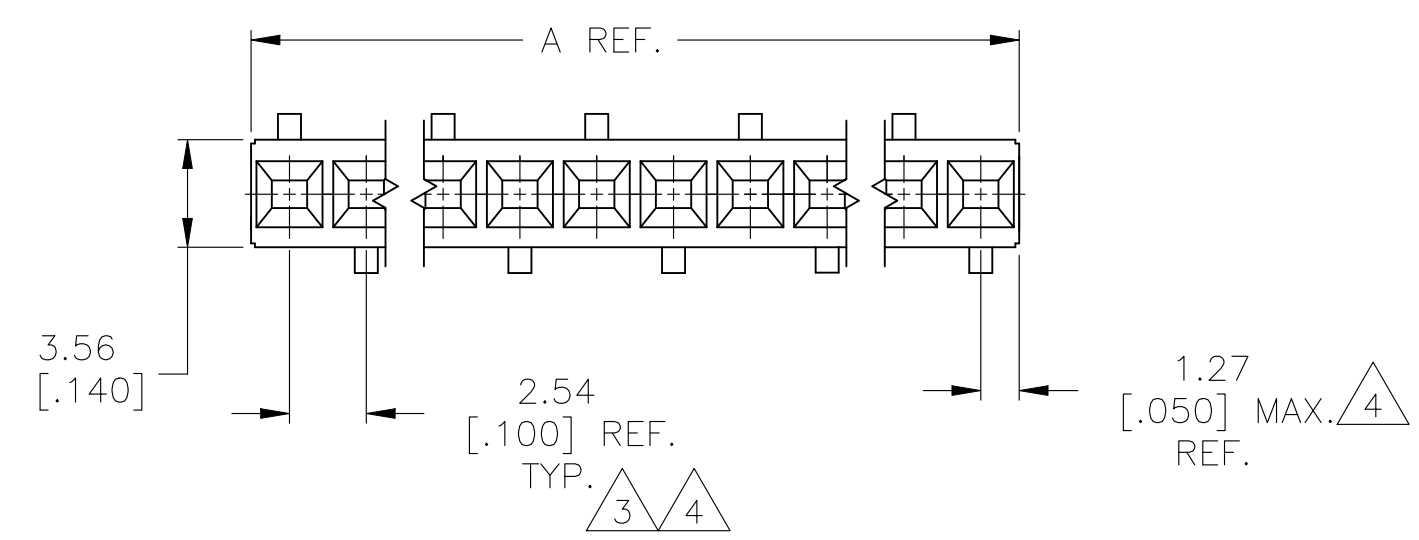


REVISIONS					
P	LTR	DESCRIPTION	DATE	DRN	APVD
K		RESIN SUPPLIER CHANGE FOR THE HOUSING	02DEC2021	SCB	KJK



RECOMMENDED HOLE LAYOUT



- 1 MARK PART NUMBER AND DATE CODE IN APPROXIMATE LOCATION SHOWN, EITHER SIDE.
- 2 CONTACT FINISH: DUPLEX PLATED 0.25µm [.000010] GOLD IN CONTACT AREA, 3.81-7.62µm [.000150-.000300] BRIGHT TIN-LEAD ON LEADS ALL OVER 1.27µm [.000050] MIN NICKEL.
- 3 TOLERANCE NON CUMULATIVE.
- 4 THESE DIMENSIONS PERTAIN TO CAVITY CENTERLINES ONLY, NOT TO CONTACT LOCATION
- 5 HOUSING: FLAME RETARDANT, GLASS FILLED POLYESTER, BLACK. CONTACT: PHOSPHOR BRONZE.
- 6 FOR 2 POS, DATE CODE IS STAMPED OPPOSITE SIDE OF TE LOGO.
- 7 TE LOGO AND CSA LOGO ARE MOLDED INTO HOUSING.
- 8 NO PART NUMBER MARKING REQUIRED FOR THIS PART.
- 9 CONTACT FINISH: DUPLEX PLATED 0.25µm [.000010] GOLD IN CONTACT AREA, 3.81-7.62µm [.000150-.000300] MATTE TIN ON LEADS ALL OVER 1.27µm [.000050] MIN NICKEL.
- 10 ROHS 2002/95/EC COMPLIANT

99.06 [3.900]	101.60 [4.000]	40	10	8-147726-9
96.52 [3.800]	99.06 [3.900]	39	10	8-147726-8
93.98 [3.700]	96.52 [3.800]	38	10	8-147726-7
91.44 [3.600]	93.98 [3.700]	37	10	8-147726-6
88.90 [3.500]	91.44 [3.600]	36	10	8-147726-5
86.34 [3.400]	88.90 [3.500]	35	10	8-147726-4
83.82 [3.300]	86.34 [3.400]	34	10	8-147726-3
81.28 [3.200]	83.82 [3.300]	33	10	8-147726-2
78.74 [3.100]	81.28 [3.200]	32	10	8-147726-1
76.20 [3.000]	78.74 [3.100]	31	10	8-147726-0
73.66 [2.900]	76.20 [3.000]	30	10	7-147726-9
71.12 [2.800]	73.66 [2.900]	29	10	7-147726-8
68.58 [2.700]	71.12 [2.800]	28	10	7-147726-7
66.04 [2.600]	68.58 [2.700]	27	10	7-147726-6
63.50 [2.500]	66.04 [2.600]	26	10	7-147726-5
60.96 [2.400]	63.50 [2.500]	25	10	7-147726-4
58.42 [2.300]	60.96 [2.400]	24	10	7-147726-3
55.88 [2.200]	58.42 [2.300]	23	10	7-147726-2
53.34 [2.100]	55.88 [2.200]	22	10	7-147726-1
50.80 [2.000]	53.34 [2.100]	21	10	7-147726-0
48.26 [1.900]	50.80 [2.000]	20	10	6-147726-9
45.72 [1.800]	48.26 [1.900]	19	10	6-147726-8
43.18 [1.700]	45.72 [1.800]	18	10	6-147726-7
40.64 [1.600]	43.18 [1.700]	17	10	6-147726-6
38.10 [1.500]	40.64 [1.600]	16	10	6-147726-5
35.56 [1.400]	38.10 [1.500]	15	10	6-147726-4
33.02 [1.300]	35.56 [1.400]	14	10	6-147726-3
30.48 [1.200]	33.02 [1.300]	13	10	6-147726-2
27.94 [1.100]	30.48 [1.200]	12	10	6-147726-1
25.40 [1.000]	27.94 [1.100]	11	10	6-147726-0
22.86 [.900]	25.40 [1.000]	10	10	5-147726-9
20.32 [.800]	22.86 [.900]	9	10	5-147726-8
17.78 [.700]	20.32 [.800]	8	10	5-147726-7
15.24 [.600]	17.78 [.700]	7	10	5-147726-6
12.70 [.500]	15.24 [.600]	6	10	5-147726-5
10.16 [.400]	12.70 [.500]	5	10	5-147726-4
7.62 [.300]	10.16 [.400]	4	10	5-147726-3
5.08 [.200]	7.62 [.300]	3	10	5-147726-2
2.54 [.100]	5.08 [.200]	2	10	5-147726-1

99.06 [3.900]	101.60 [4.000]	40	3-147726-9
96.52 [3.800]	99.06 [3.900]	39	3-147726-8
93.98 [3.700]	96.52 [3.800]	38	3-147726-7
91.44 [3.600]	93.98 [3.700]	37	3-147726-6
88.90 [3.500]	91.44 [3.600]	36	3-147726-5
86.34 [3.400]	88.90 [3.500]	35	3-147726-4
83.82 [3.300]	86.34 [3.400]	34	3-147726-3
81.28 [3.200]	83.82 [3.300]	33	3-147726-2
78.74 [3.100]	81.28 [3.200]	32	3-147726-1
76.20 [3.000]	78.74 [3.100]	31	3-147726-0
73.66 [2.900]	76.20 [3.000]	30	2-147726-9
71.12 [2.800]	73.66 [2.900]	29	2-147726-8
68.58 [2.700]	71.12 [2.800]	28	2-147726-7
66.04 [2.600]	68.58 [2.700]	27	2-147726-6
63.50 [2.500]	66.04 [2.600]	26	2-147726-5
60.96 [2.400]	63.50 [2.500]	25	2-147726-4
58.42 [2.300]	60.96 [2.400]	24	2-147726-3
55.88 [2.200]	58.42 [2.300]	23	2-147726-2
53.34 [2.100]	55.88 [2.200]	22	2-147726-1
50.80 [2.000]	53.34 [2.100]	21	2-147726-0
48.26 [1.900]	50.80 [2.000]	20	1-147726-9
45.72 [1.800]	48.26 [1.900]	19	1-147726-8
43.18 [1.700]	45.72 [1.800]	18	1-147726-7
40.64 [1.600]	43.18 [1.700]	17	1-147726-6
38.10 [1.500]	40.64 [1.600]	16	1-147726-5
35.56 [1.400]	38.10 [1.500]	15	1-147726-4
33.02 [1.300]	35.56 [1.400]	14	1-147726-3
30.48 [1.200]	33.02 [1.300]	13	1-147726-2
27.94 [1.100]	30.48 [1.200]	12	1-147726-1
25.40 [1.000]	27.94 [1.100]	11	1-147726-0
22.86 [.900]	25.40 [1.000]	10	147726-9
20.32 [.800]	22.86 [.900]	9	147726-8
17.78 [.700]	20.32 [.800]	8	147726-7
15.24 [.600]	17.78 [.700]	7	147726-6
12.70 [.500]	15.24 [.600]	6	147726-5
10.16 [.400]	12.70 [.500]	5	147726-4
7.62 [.300]	10.16 [.400]	4	147726-3
5.08 [.200]	7.62 [.300]	3	147726-2
2.54 [.100]	5.08 [.200]	2	147726-1

11 6 8 OBSOLETE

6 8 OBSOLETE

FINISH	B	A	NO. OF POSN.	PART NUMBER
--------	---	---	--------------	-------------

THIS DRAWING IS A CONTROLLED DOCUMENT.		DIN M. BINNER 22JAN01		TE Connectivity	
DIMENSIONS: mm [INCHES]		TOLERANCES UNLESS OTHERWISE SPECIFIED:			
0 PLC ± - 1 PLC ± - 2 PLC ± - 3 PLC ± 0.13 [.005] 4 PLC ± - ANGLES ± -		0 PLC ± - 1 PLC ± - 2 PLC ± - 3 PLC ± 0.13 [.005] 4 PLC ± - ANGLES ± -		NAME: RECP. ASSY., MOD IV, SINGLE ROW, .100 CL, VERTICAL BD. MOUNT, CLOSED ENTRY, DUAL ENTRY, SHORT PT OF CONTACT PRODUCT SPEC: 108-25022 APPLICATION SPEC: 114-25018	
MATERIAL: 5		FINISH: SEE TABLE		SIZE: A1 CAGE CODE: 00779 DRAWING NO: 147726 WEIGHT: - CUSTOMER DRAWING: -	
				SCALE: 4:1 SHEET 1 of 1 REV K	

单击下面可查看定价，库存，交付和生命周期等信息

[>>TE Connectivity\(泰科\)](#)