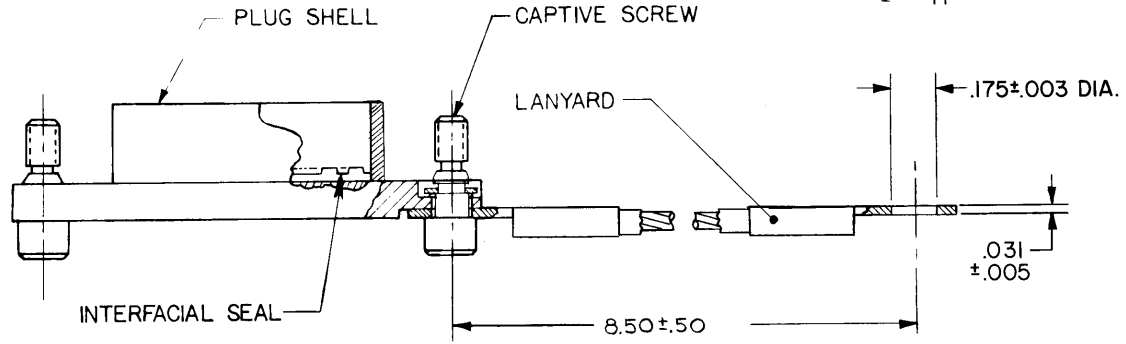
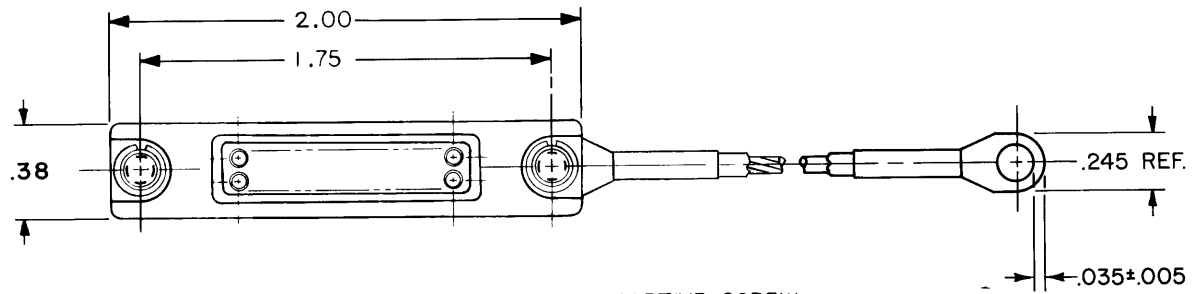
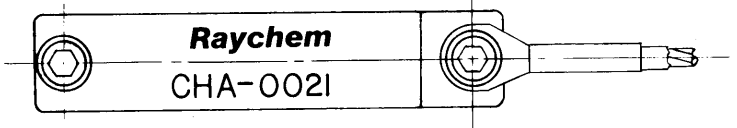


REVISIONS			
LTR	DESCRIPTION	DATE	APPROVED
A	CHG'D PER DCO #T- 3345	W.J. 1-11-82	JB



NOTES:

- SEALING:
PROTECTIVE CAP DESIGNED TO ENVIRONMENTALLY SEAL THE MATING RECEPTACLE CONNECTOR, 1" MTC 100 SERIES WITH SOCKET CONTACTS.
- MATERIALS AND FINISHES:
PLUG SHELL: ALUMINUM ALLOY PER QQ-A-591 OR QQ-A-225, NICKEL PLATED PER MIL-C-26074.
INTERFACIAL SEAL: SILICONE ELASTOMER PER MIL-R-5847.
LANYARD: STAINLESS STEEL PER QQ-S-766 PASSIVATED.
CAPTIVE SCREW: STAINLESS STEEL PER QQ-S-766 PASSIVATED.



SPECIFICATION CONTROL DRAWING

If this document is printed it becomes uncontrolled.
Check with the web for latest revision.

UNLESS OTHERWISE SPECIFIED DIMENSIONS ARE IN INCHES AND TOLERANCES ARE XXX ± .010 XX ± .015 — ± .020	DRAWN	W.V.J. 8-14-80	Raychem Electronics Division 300 Constitution Drive Menlo Park, California 94025			
	CHECKED	JB				
	MATERIAL	APPROVED	9/3/82	TITLE	PROTECTIVE CAP, PLUG WITH PIN INSERT 1-INCH MTC 100 SERIES	
	FINISH	APPROVED	11/7/81	PART NO.	SIZE B	CODE IDENT NO 06090
	PROJECT		SCALE	WEIGHT	SHEET 1 OF 1	

单击下面可查看定价，库存，交付和生命周期等信息

[>>TE Connectivity\(泰科\)](#)