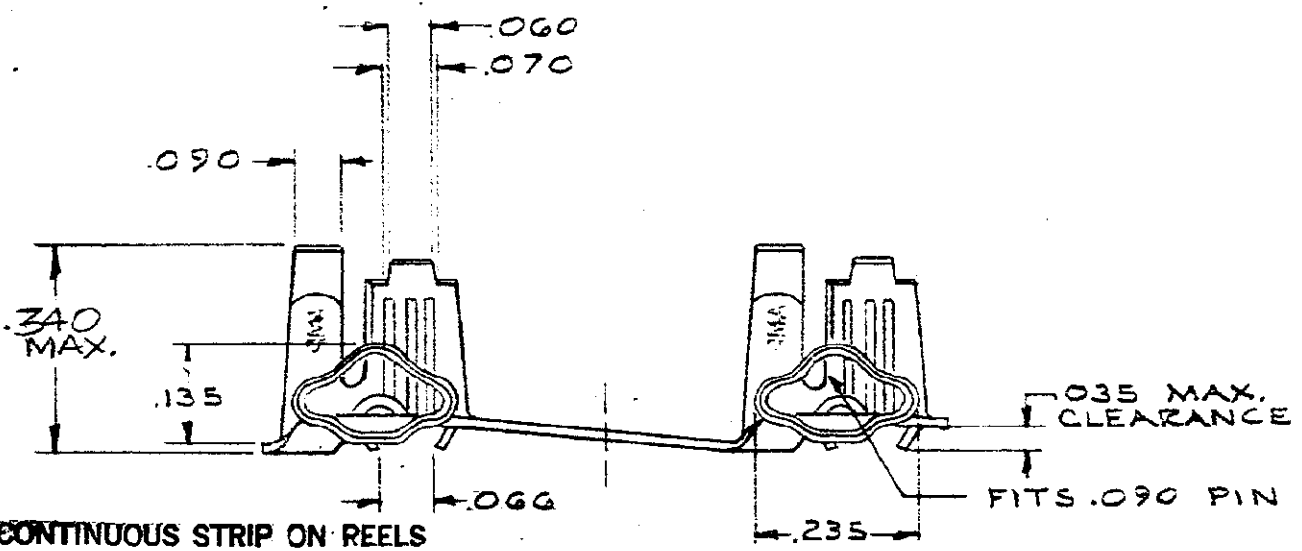
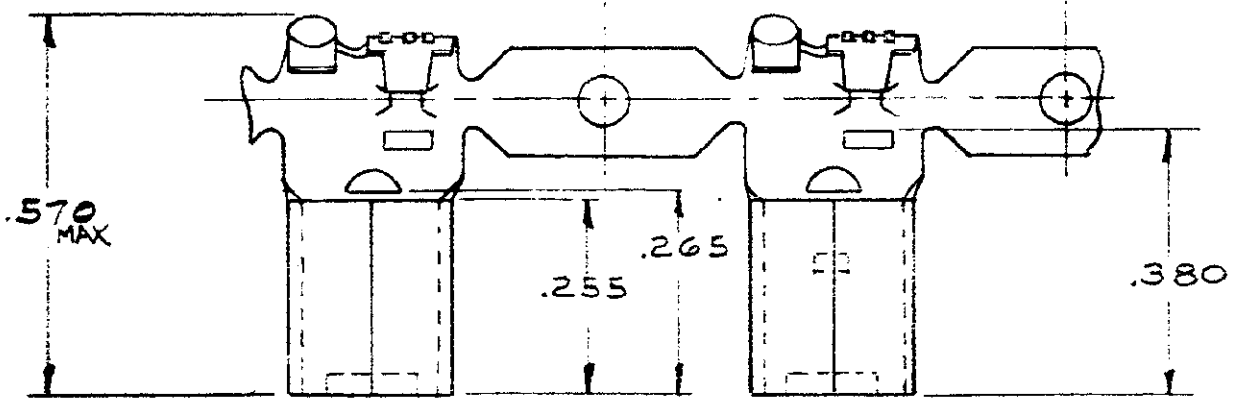


DRAWING MADE IN AMERICAN PROJECTION

NUMBER
60376



CONTINUOUS STRIP ON REELS

PART NUMBER	MATERIAL - FINISH
60376-1	018 PHOS. BRONZE - TIN
	-2 018 BE. COPPER - NONE
	-3 018 BE. COPPER - TIN
	OBSELETE

DIMENSIONS IN INCHES. DO NOT SCALE PRINT.

©1971 BY AMP INCORPORATED. ALL RIGHTS RESERVED. AMP PRODUCTS COVERED BY PATENTS AND/OR PATENTS PENDING.

**CUSTOMER COPY
REFERENCE ONLY**

REV	DESCRIPTION	DATE	BY	CHK
C	DES-3 AF-2707	5-11-88	M/S	JT
B	REV .570 WAS .560		AF 3078	64
A	REVISED		AF 0580	5/15/84
	REMOVED FROM 42745			
TR	REVISION RECORD			
DR	N.E. NEFF	4/9/71		
CHK				

MATERIAL AND FINISH	
WIRE - RANGE - INSULATION	TYPE
20 #14 120-170	
TOLERANCE EXCEPT AS NOTED = .015	SCALE = 1"0
NAME	
.090 PIN RECEPTACLE, FLAG	

AMP		AMP INCORPORATED HARRISBURG, PENNA.	
CLASS	N		
LOC	AF	NO	A 60376
REV	C		

单击下面可查看定价，库存，交付和生命周期等信息

[>>TE Connectivity\(泰科\)](#)