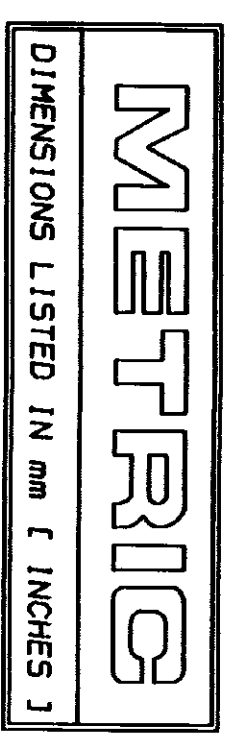
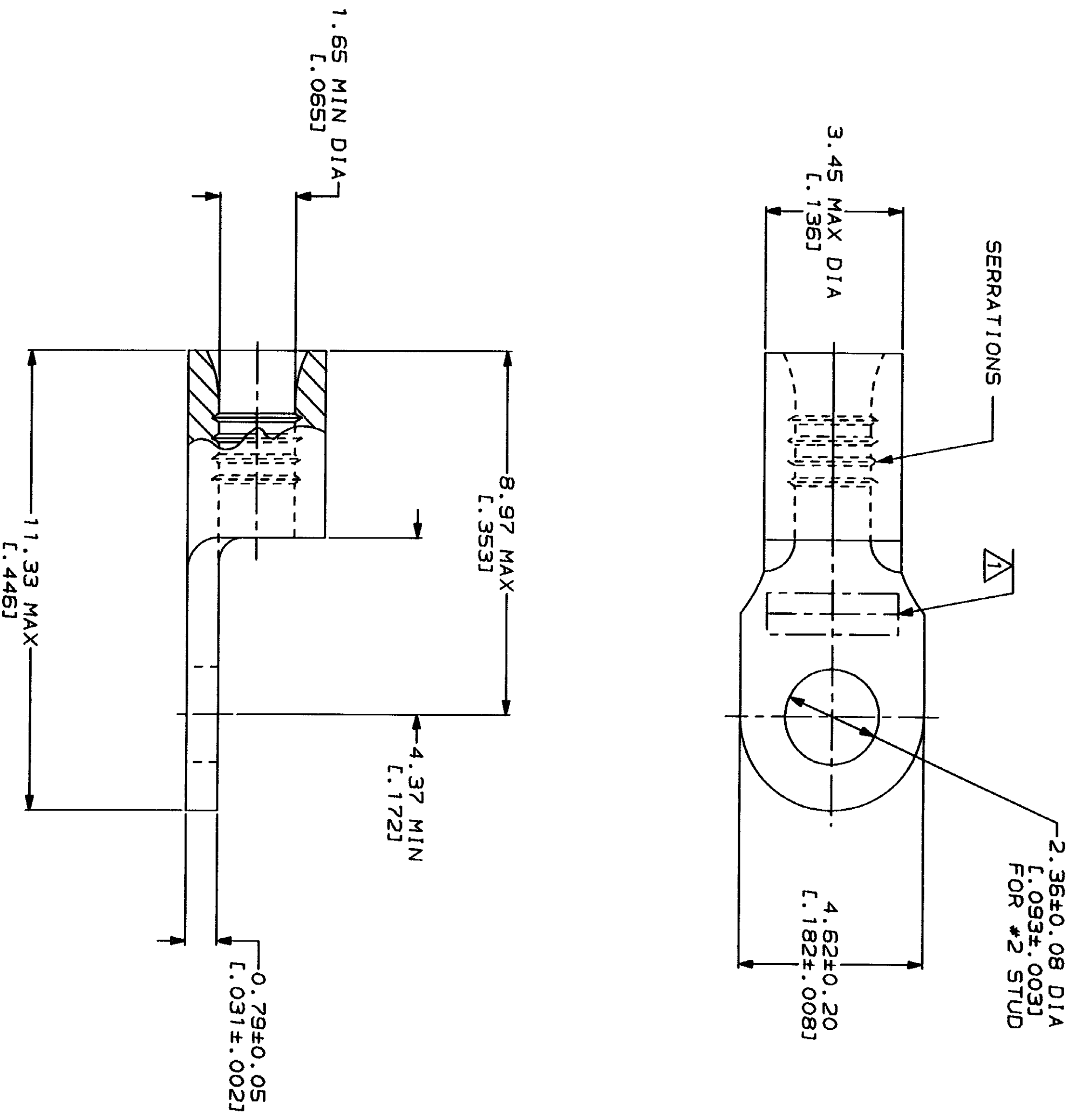


LOC	DISP	REV	DATE	APP
G	14			
REVISED PER 0720-0230-93				2/28/94



AMP	IL
WIRE RANGE	E13288 Listed
22-16 AWG STRANDED	22-16 AWG STRANDED
IL LR7189 Certified	MILITARY P/N AND CLASS
NOT CERTIFIED	NOT APPLICABLE

STAMP AMP 22-18* APPROX AS SHOWN
 22-16 TERMINALS ARE STAMPED 22-18 IN
 ACCORDANCE WITH MILITARY SPECIFICATION
 MIL-T-7928, COMMERCIAL WIRE RANGE IS 22-16



AMP INCORPORATED CUSTOMER SERVICE SYSTEMS		MAX RECOMMENDED OPERATING TEMPERATURE: 170°C MAX	
FOR ADDITIONAL PRODUCT INFORMATION OR COPIES OF DRAWINGS AND TECHNICAL DOCUMENTS	1-800-522-6752	VOLTAGE RATING: NOT APPLICABLE	DO NOT SCALE PRINT. UNLESS SPECIFIED DIMENSIONS IN INCHES - TOLERANCES ON 1 2 PLG DEC ± 3 ANGLES MATERIAL
FOR APPLICATION TOOLSING INFORMATION	1-800-722-1111	WIRE CROSS SECTIONAL AREA RANGE: 0.26-1.65mm² [509-3,260] CIR MILS STRANDED	DR 2-2-93 TA BRILKMAN CHK 2-2-93 DA PATTERSON APPD 2-2-93 DE MILLER APPD 2-2-93 JL NECKLEY PRODUCT SPEC
FOR ORDER ENTRY	1-800-526-5142	FINISH TIN PLATE 0.00254 [L.000100] MIN THK PER MIL-T-10727	APPLICATION SPEC

AMP 171-8 REV 3-82		AMP INCORPORATED Harrisburg, PA 17105-3608	
TERMINAL, RING TONGUE, BUDGET		NAME	320677
SIZE	CAGE CODE	DRAWING NO	320677
SCALE	10:1		

单击下面可查看定价，库存，交付和生命周期等信息

[>>TE Connectivity\(泰科\)](#)