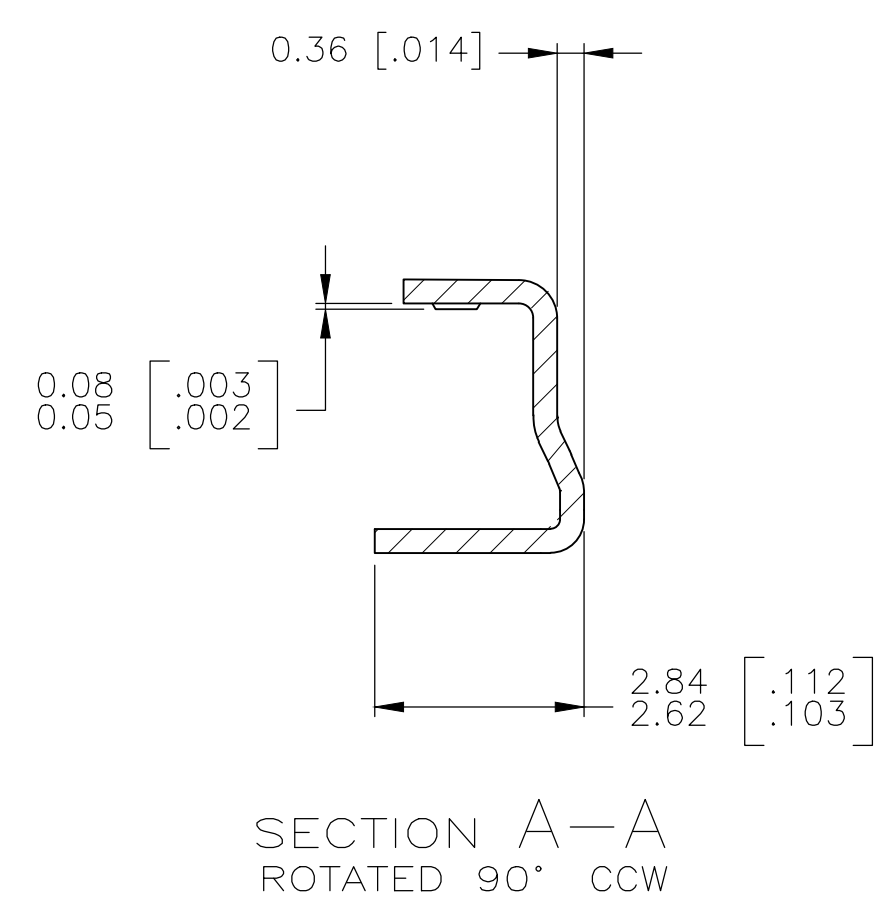
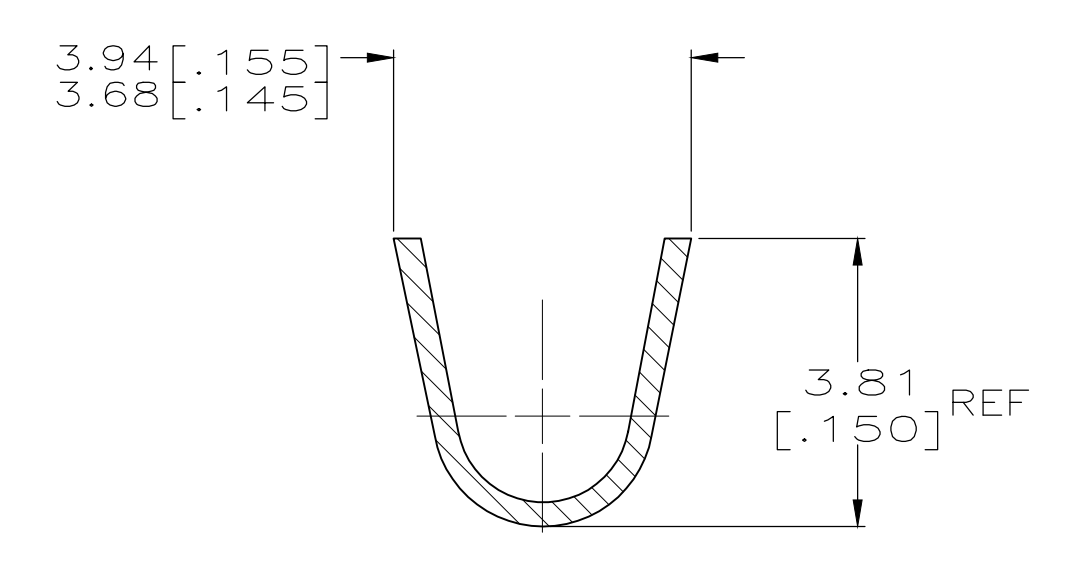
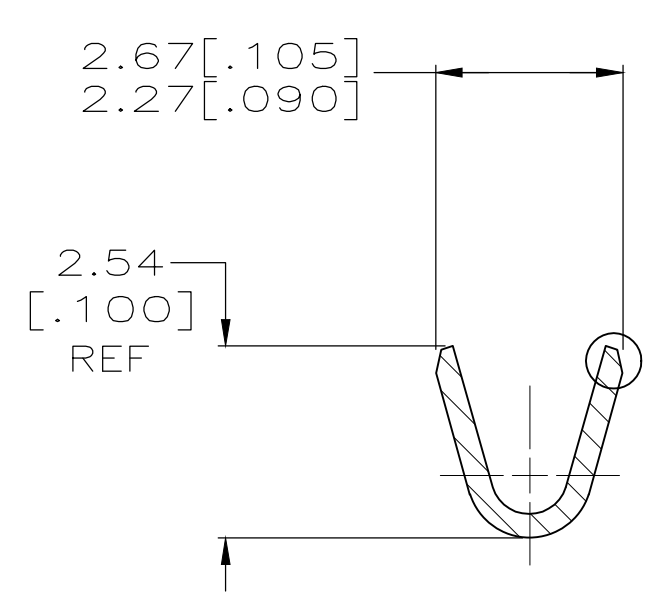
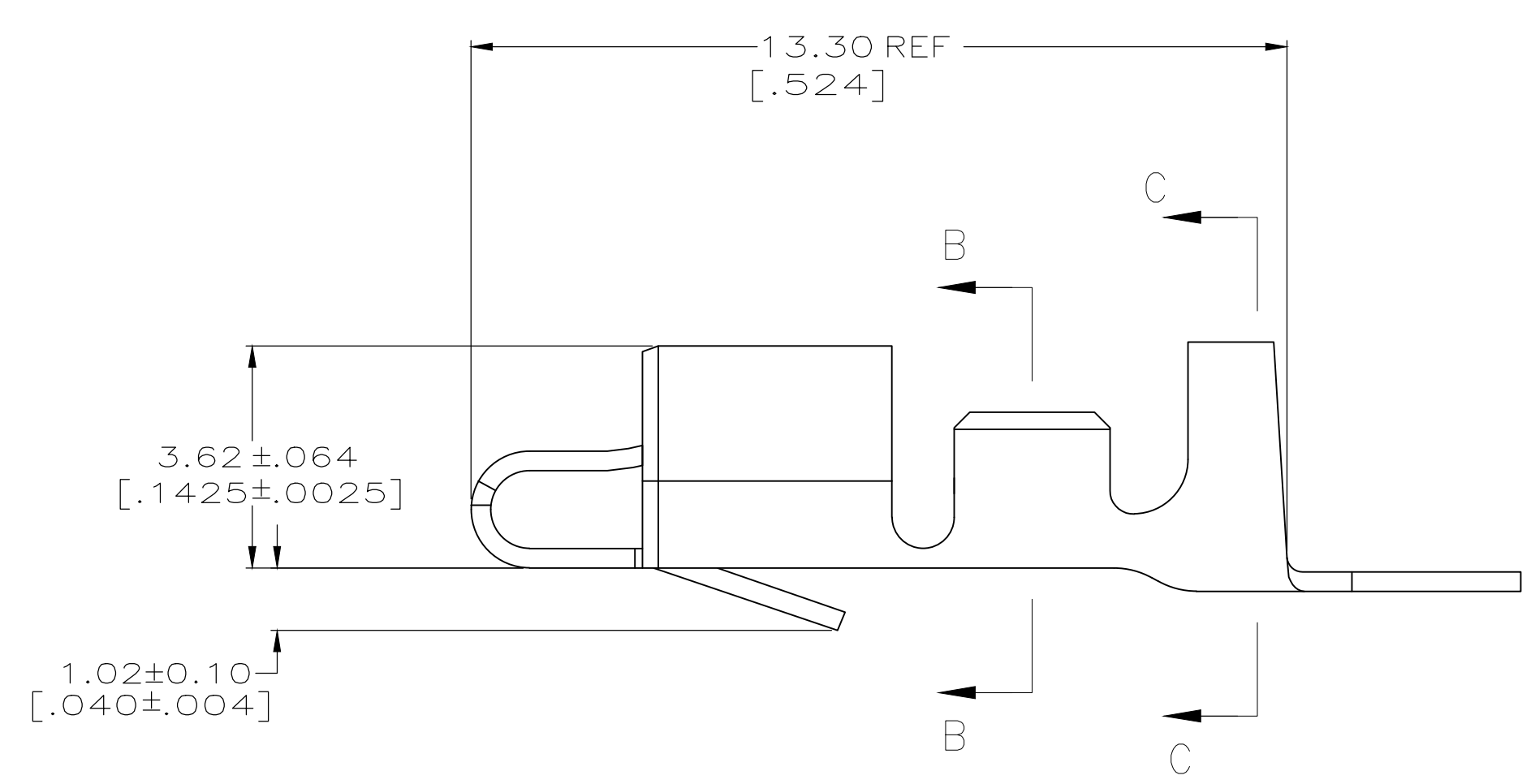
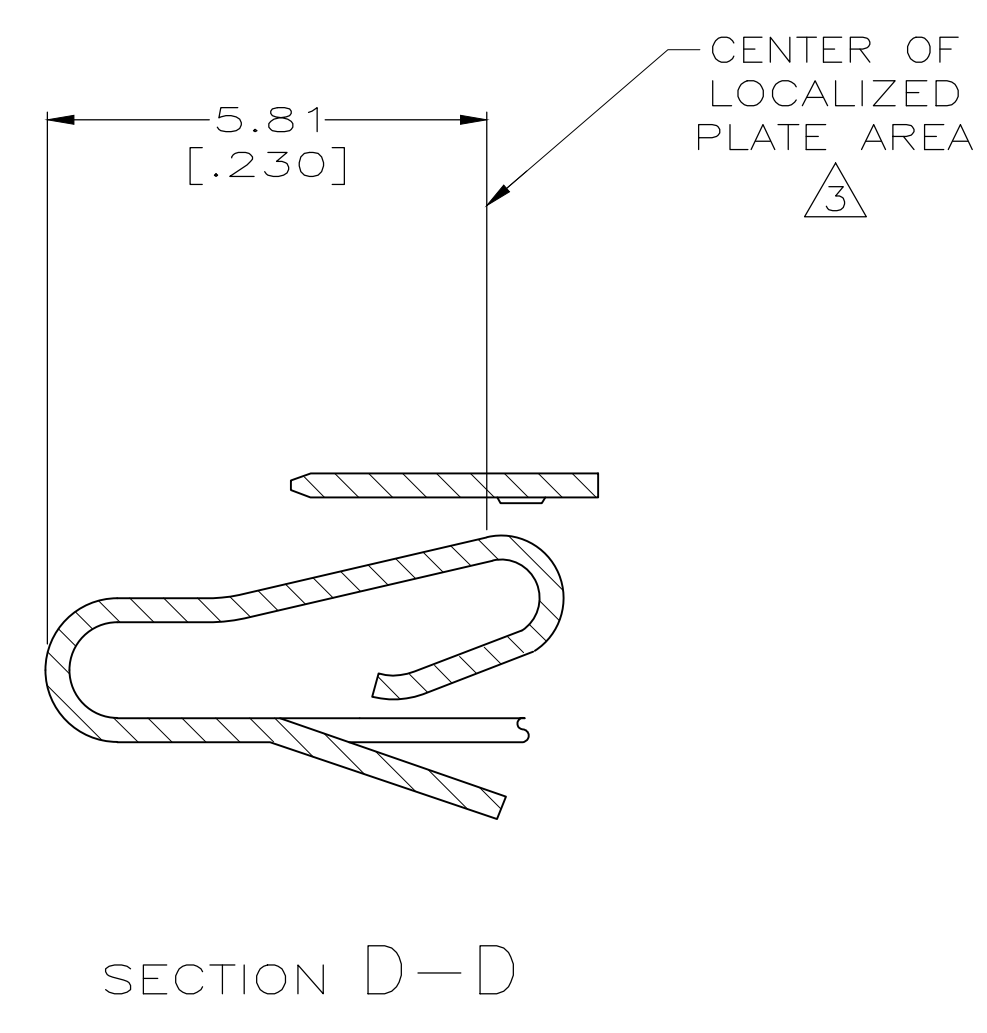
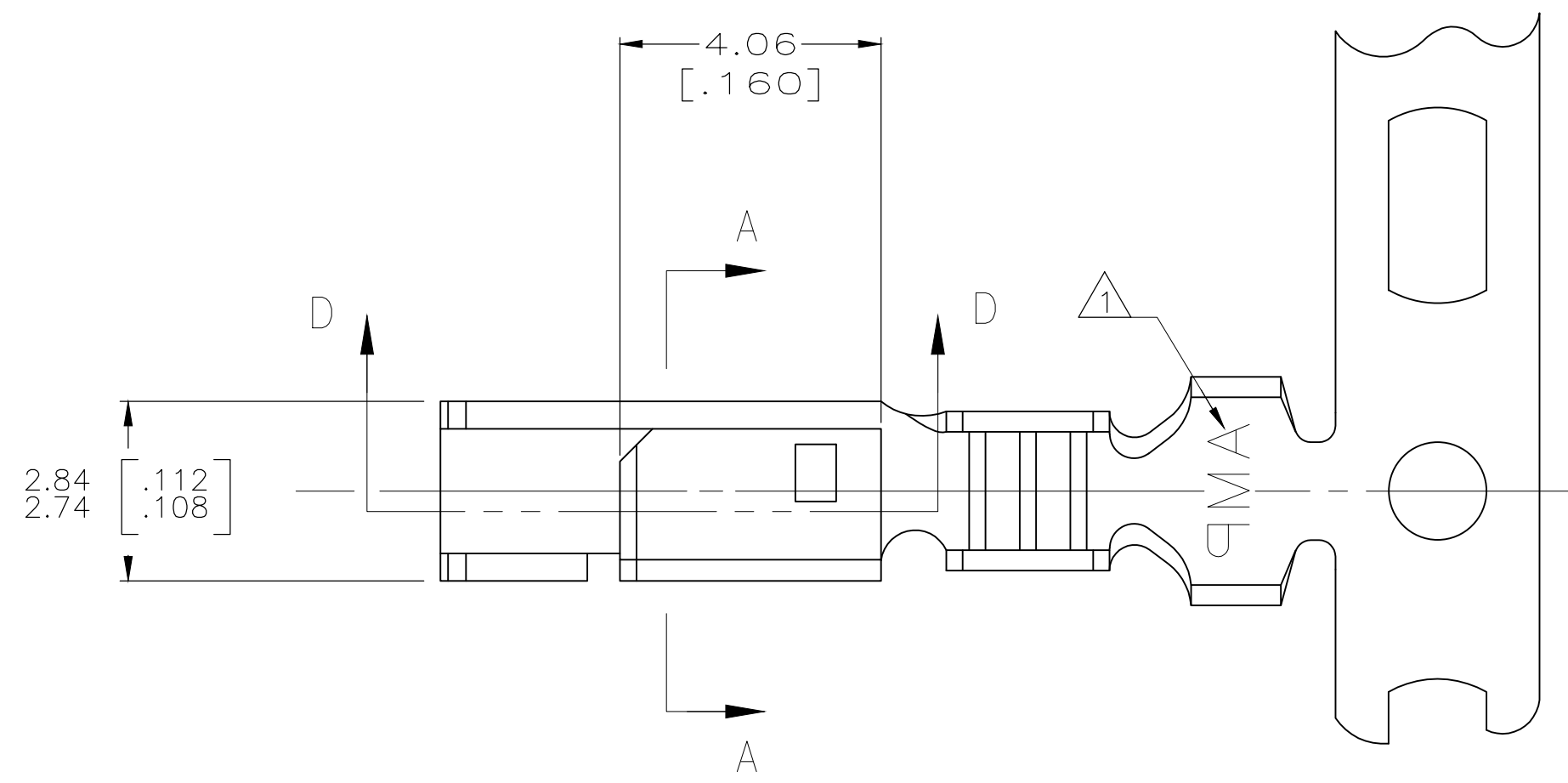


REVISIONS				
P	LTR	DESCRIPTION	DATE	BY
D		REVISED PER ECR-18-019874	19MAR2019	BDA SG

- INSULATION RANGE: 1.78-2.84 [.070-.112]  
WIRE RANGE: 0.2-0.9 mm<sup>2</sup> (24-18) AWG.
- 0.00203 [.000080] MIN MATTE TIN-LEAD OVER  
0.00127 [.000050] MIN NICKEL.
- 0.00076 [.000030] MIN THICK GOLD STRIPES IN  
LOCALIZED PLATE AREA ON BEAM AND DIMPLE OVER  
0.00127 [.000050] MIN THICK NICKEL OVER ENTIRE  
CONTACT.
- DIMENSIONS IN BRACKETS ARE IN INCHES.
- FOR USE ONLY WITH LID STYLE HOUSING.
- 0.00203 [.000080] MIN MATTE TIN OVER  
0.00127 [.000050] MIN NICKEL.
- OBSOLETE
- REELING OPPOSITE DIRECTION FOR  
OCEAN APPLICATOR.



FINISH	MATERIAL	PART NUMBER
6	PHOS BRONZE	4-647406-1
6	PHOS BRONZE	3-647406-1
3	PHOS BRONZE	647406-2
2	PHOS BRONZE	647406-1
POST PLATE	PRE-PLATE	

THIS DRAWING IS A CONTROLLED DOCUMENT.

DIMENSIONS: mm [INCHES]	TOLERANCES UNLESS OTHERWISE SPECIFIED: 0. PLC ± - 1. PLC ± - 2. PLC ± 0.13 [.005] 3. PLC ± - 4. PLC ± - ANGLES ± -	FINISH K. WHITAKER 15OCT2004 J. ELLIS 15OCT2004	NAME J. ELLIS 15OCT2004	RESTRICTED TO
SEE TABLE		PRODUCT SPEC 108-1049	APPLICATION SPEC 114-1021	SIZE A1
		MATERIAL PHOS BRONZE		WEIGHT A1 00779 C=647406
		CUSTOMER DRAWING		SCALE 10:1 SHEET 1 OF 1 REV D

STE TE Connectivity Ltd.  
SL-156 HOODED RECEPTACLE, LARGE DIA, INSULATION TYPE

单击下面可查看定价，库存，交付和生命周期等信息

[>>TE Connectivity\(泰科\)](#)