

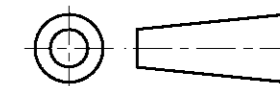
DO NOT SCALE

DIMENSIONS IN mm

METRIC

THIRD ANGLE

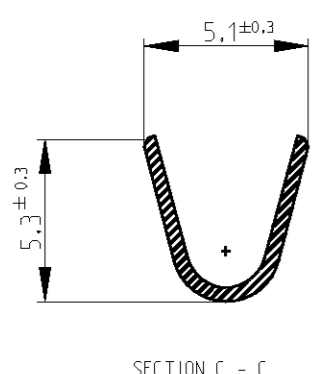
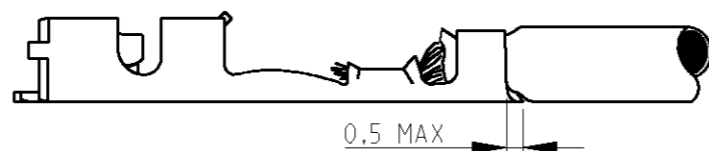
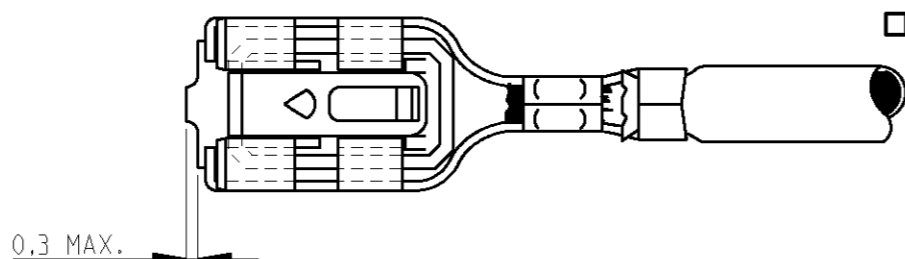
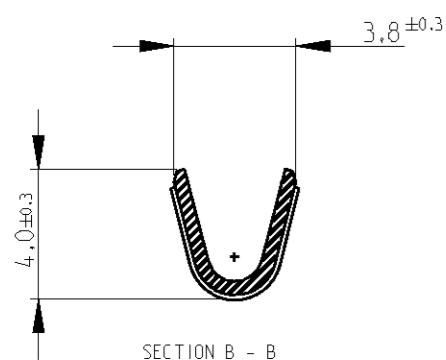
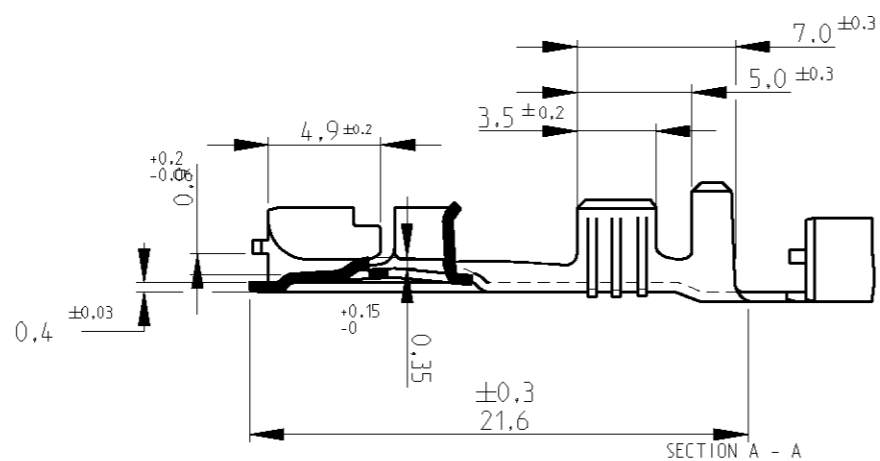
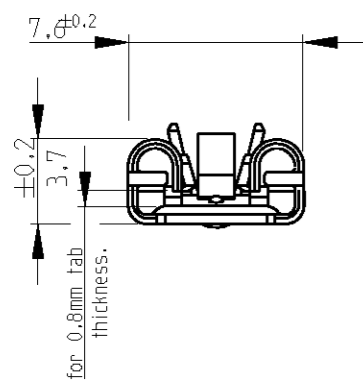
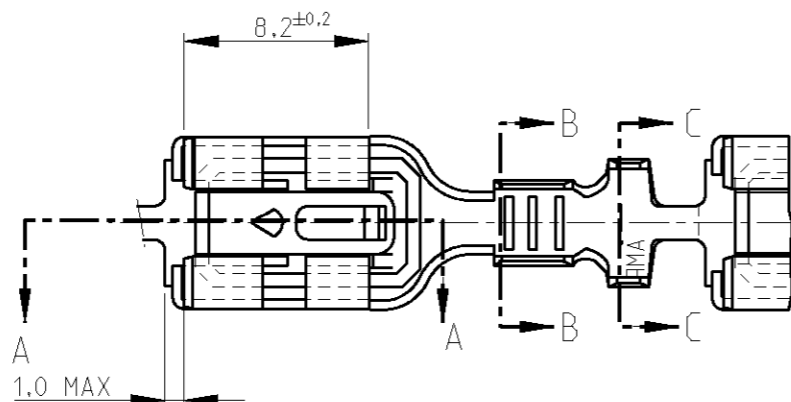
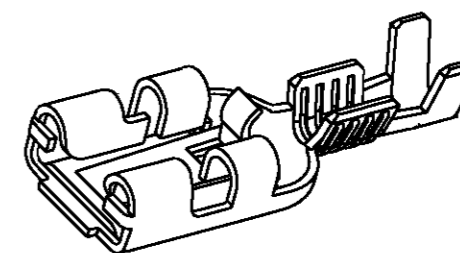
PROJECTION



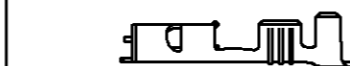
NOTES :

- 1. FOR USE ON MINI HD APPLICATOR ( LEFT - RIGHT FEED ).
- 2. TINPLATING THICKNESS .000080 MIN - .000400 MAX. (INCH).
- 3. MATERIAL PH.BRONZE ACC. AMP-SPEC 100-221.

**4** OBSOLETE PARTS: OBSOLETE CIS STREAMLINING  
PER D.RENAUD/D.SINISI



DIRECTION OFF TOP OF REEL



107 - 3 FIG. 6.

WIRE RANGE :	>1.0-2.5	mm <sup>2</sup>
INSULATION RANGE :	2.1-3.1	DIA.

WIRE	CRIMP HEIGHT	CRIMP WIDTH
1.5mm?	1.76mm	.110 'F'
2.0mm?	1.90mm	.110 'F'
2.5mm?	2.04mm	.110 'F'

100016-4	PRE-TINPLATED	PH.BRONZE	216330-4
100016-3	SILVERPLATED	PH.BRONZE	<del>216330-3</del>
100016-2	TINPLATED	PH.BRONZE	216330-2
100016-1	UNPLATED	PH.BRONZE	216330-1
LOOSE PIECE NR.	FINISH	MATERIAL	PARTNUMBER

-	-	-	-	-	CUSTOMER DRAWING	FOR REFERENCE ONLY WILL NOT BE UPDATED
-	-	-	-	-	© COPYRIGHT 19 - BY Tyco. ELECTRONICS AMP ESPAÑOLA S.A ALL INTERNATIONAL RIGHTS RESERVED. AMP PRODUCTS MAY BE COVERED BY U.S. AND FOREIGN AND/OR PATENTS PENDING.	
-	-	-	-	-	Tyco Electronics AMP Española S.A. BARCELONA / ESPAÑA	
A1	REVISED PER ECO-09-025714	KK	AEG	DEC09	NAME	
A	REVISED PER EC ES00-0029-03	J.L	J.L	28FEB03	.250 L.I.F. AUTOMOTIVE POS. LOCK REC. MKII	
0	EH-0285-94	JvL	HvdS	26-04-94	DWG.No.	
LTR	REVISION RECORD	DR.	CHK.	DATE	C-216330	
DR.:	J.v.LIEMPT	CHK.:	H.v.d.STEEN	APP.:	L.v.SOEST	REV.LTR.
DATE:	26 APR 94	DATE:	-	DATE:	-	A1
					SHEET	A3
					1 OF 1	

单击下面可查看定价，库存，交付和生命周期等信息

[>>TE Connectivity\(泰科\)](#)