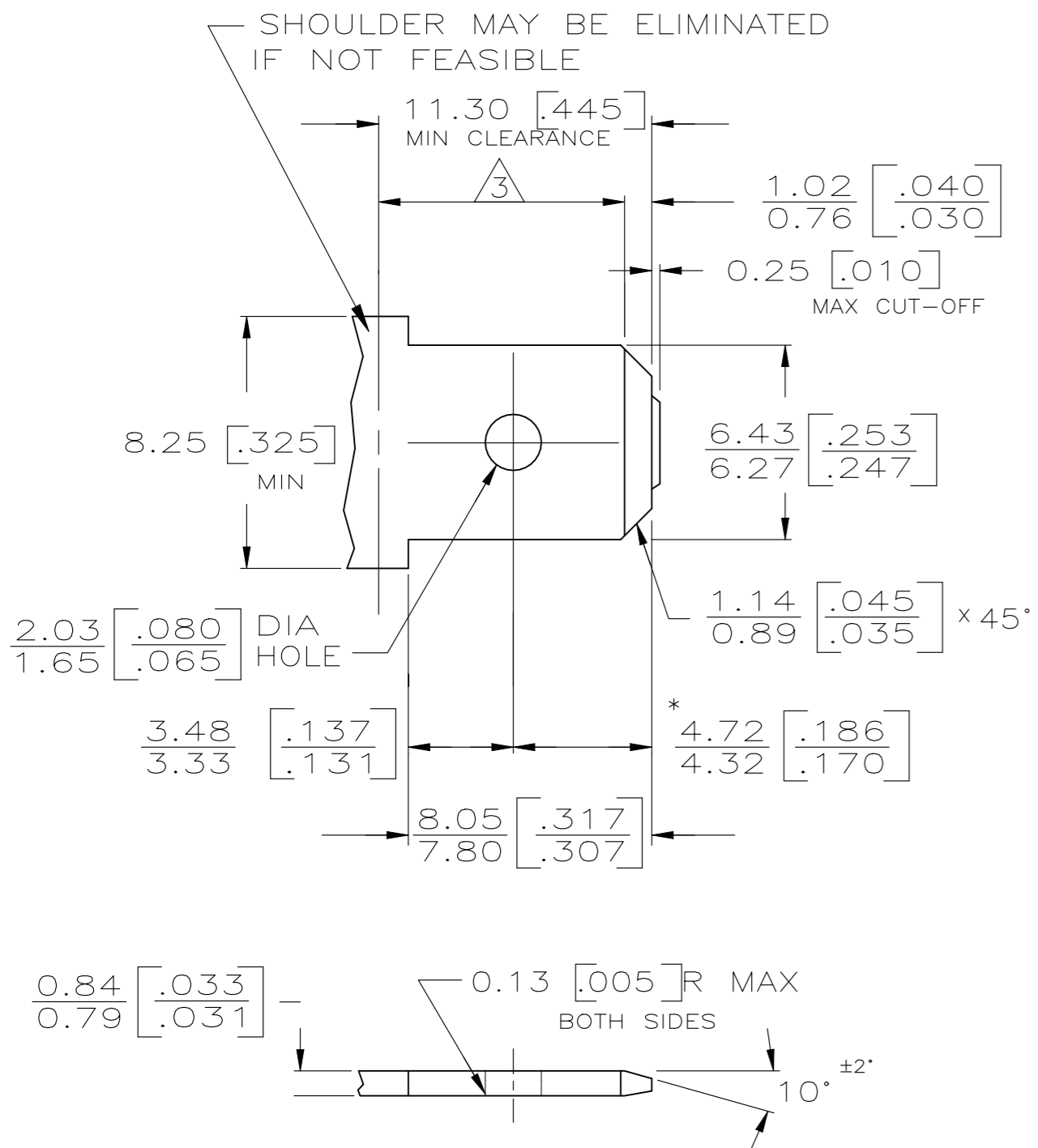


THIS DRAWING IS UNPUBLISHED. RELEASED FOR PUBLICATION
 © COPYRIGHT - By - ALL RIGHTS RESERVED.

| LOC | | DIST | | REVISIONS | | | |
|-----|-----|---------------------------|-----------|-----------|------|--|--|
| P | LTR | DESCRIPTION | DATE | DWN | APVD | | |
| S | | REVISED PER ECR-20-100918 | 15FEB2020 | PC | AF | | |
| S1 | | REVISED PER ECR-21-109740 | 18AUG2021 | BDA | AF | | |

SUGGESTED MATING TAB



1 - MATL: 1/2H BRASS OR NICKEL PL STEEL.

2 - NO BURRS PERMISSIBLE AT HOLE.

3 - MUST BE FLAT WITHIN 0.076 [.003] OVER THIS LENGTH.

4 - TIN PLATING IS REQUIRED ON BRASS WHEN TERMINAL TEMP. IS OVER 225°F

5 - HOLE MUST BE SYMMETRICAL ABOUT TAB Q WITHIN 0.076 [.003]
 * TO BE USED ONLY WHEN SHOULDER IS ELIMINATED.

1 FOR USE WITH MKII POSITIVE LOCK, LOW INSERTION FORCE FASTON RECEPTACLES AND MOST BUDGET FASTON RECEPTACLES.

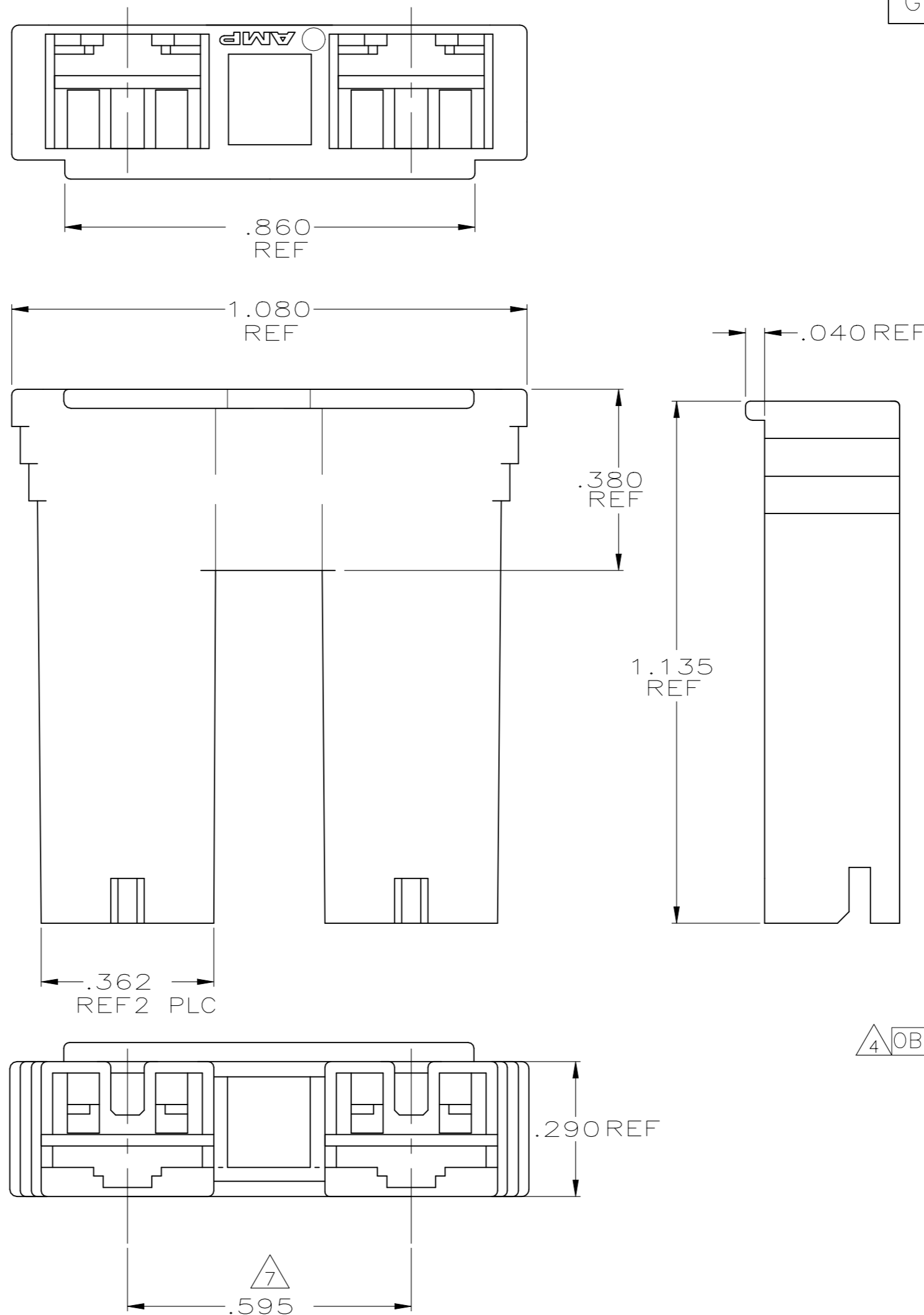
2 PRELIMINARY - NOT FOR PRODUCTION

3 PREPRODUCTION - FASR REQUIRED

4 OBSOLETE PARTS: OBSOLETE CIS STREAMLINING PER D.RENAUD/D.SINISI

5 HOUSING IS MOLDED FROM A MATERIAL THAT MEETS MINIMUM GLOW WIRE FLAMMABILITY INDEX OF 850°C PER IEC 60695-2-12 AND MINIMUM GLOW WIRE IGNITION TEMPERATURE OF 775°C PER IEC 60695-2-13.

6 HOUSING TESTED TO IEC 60695-2-11 FOR NYLON, GLOW-WIRE FLAMMABILITY TEST METHOD FOR END-PRODUCTS (GWEPT) 750°C.



7 DIMENSION IS BETWEEN CENTERLINES OF INSIDE CORE WIDTHS.

| | |
|---|------------|
| 66 NYLON, 130°C V0 BLUE | 4-520935-3 |
| 66 NYLON, 130°C V0 RED | 4-520935-2 |
| 66 NYLON, 130°C V0 NATURAL | 4-520935-1 |
| NYLON, 130°C V0 GREEN | 1-520935-4 |
| 6 NYLON V0, NATURAL | 2-520935-4 |
| 66 NYLON V0, NATURAL | 2-520935-3 |
| 6 NYLON V2 RED | 2-520935-2 |
| 6 NYLON V2 NATURAL | 2-520935-1 |
| VO GREEN | 1-520935-9 |
| NYLON, 130°C, V0 BLACK | 1-520935-8 |
| NYLON, 130°C, V0 BROWN/TAN | 1-520935-7 |
| NYLON, 130°C, V0 YELLOW | 1-520935-6 |
| NYLON, 130°C, V0 BLUE | 1-520935-5 |
| NYLON, 130°C, V0 RED | 1-520935-2 |
| NYLON, 130°C, V0 NATURAL | 1-520935-1 |
| 66 NYLON, 120°C V0 WEATHER RESIST BLACK | 520935-9 |
| BLACK | 520935-8 |
| BROWN | 520935-7 |
| YELLOW | 520935-6 |
| BLUE | 520935-5 |
| GREEN | 520935-4 |
| WEATHER RESIST BLACK | 520935-3 |
| RED | 520935-2 |
| NATURAL | 520935-1 |
| COLOR | PART NO |

THIS DRAWING IS A CONTROLLED DOCUMENT.

DWN JR RUTH 4/14/88
 CHK M FEHER 4/14/88
 APVD R KUZO 4/14/88

TE Connectivity

HOUSING, RECPT, POSITIVE-LOCK & STANDARD FASTON, .250 SERIES, MKII

SIZE A2 CAGE CODE 00779 DRAWING NO C=520935 RESTRICTED TO -

MATERIAL 6/6 NYLON FINISH SEE TABLE WEIGHT CUSTOMER DRAWING SCALE 4:1 SHEET 1 OF 1 REV S1

单击下面可查看定价，库存，交付和生命周期等信息

[>>TE Connectivity\(泰科\)](#)