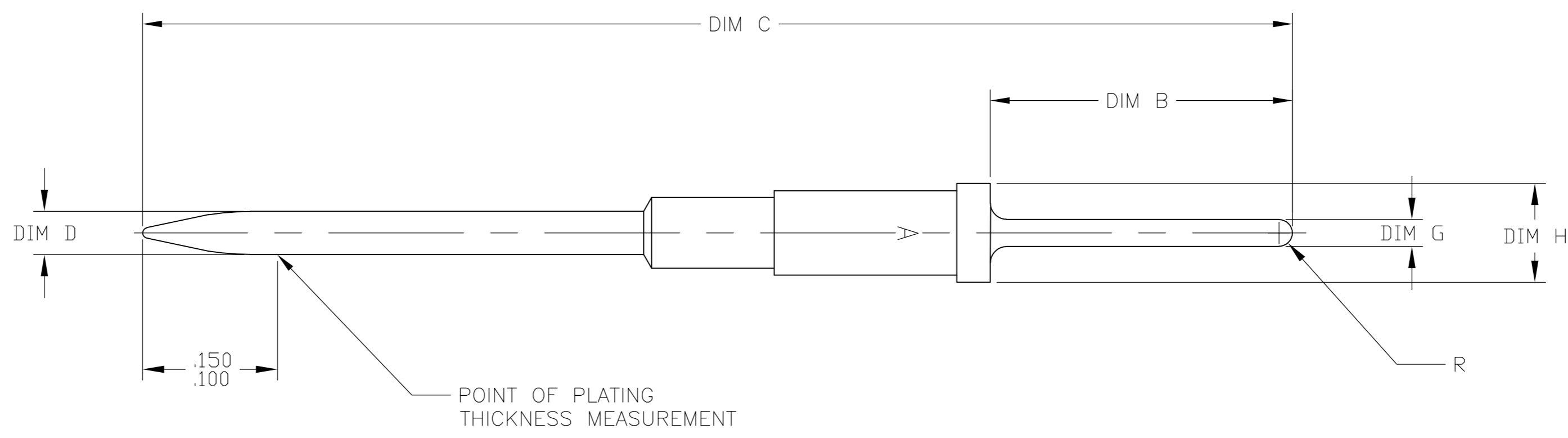


THIS DRAWING IS UNPUBLISHED. RELEASED FOR PUBLICATION  
 © COPYRIGHT - By - ALL RIGHTS RESERVED.

LOC		DIST		REVISIONS			
P	LTR	DESCRIPTION		DATE	DWN	APVD	
F		REV PER ECO 12-012805		7-12-12	CT	DE	

- 1 MAT'L: COPPER ALLOY PER AMP SPEC. 100-110-5.
- 2 FINISH: GOLD PLATE PER ASTM-B-488 OVER NICKEL PLATE PER AMS-QQ-N-290.



.090-.093	.030±.002	.040±.001	1.065 REF	.280 REF	2	1	208798-6
.090-.093	.025±.001	.040±.001	1.170 REF	.385 REF	2	1	208798-4
.090-.093	.025±.001	.040±.001	1.065 REF	.280 REF	2	1	208798-2
DIM H	DIM G	DIM D	DIM C	DIM B	FINISH	MATERIAL	PART NO.

THIS DRAWING IS A CONTROLLED DOCUMENT.

DWN	C.C.THOMAS	7-12-12
CHK	D.EABY	7-12-12
APVD	D.EABY	7-12-12
PRODUCT SPEC	-	
APPLICATION SPEC	-	
WEIGHT	-	
CUSTOMER DRAWING	SCALE 10:1	SHEET 1 of 1

**STE** TE Connectivity

NAME: PIN CONTACT, SIZE 20, SPECIAL

SIZE: A2 CAGE CODE: 00779 C=208798

RESTRICTED TO: -

REV: F

DIMENSIONS:	TOLERANCES UNLESS OTHERWISE SPECIFIED:
INCHES	
	0 PLC ± -
	1 PLC ± -
	2 PLC ± -
	3 PLC ± -
	4 PLC ± -
	ANGLES ± -
MATERIAL:	FINISH:
SEE TABLE	SEE TABLE

单击下面可查看定价，库存，交付和生命周期等信息

[>>TE Connectivity\(泰科\)](#)