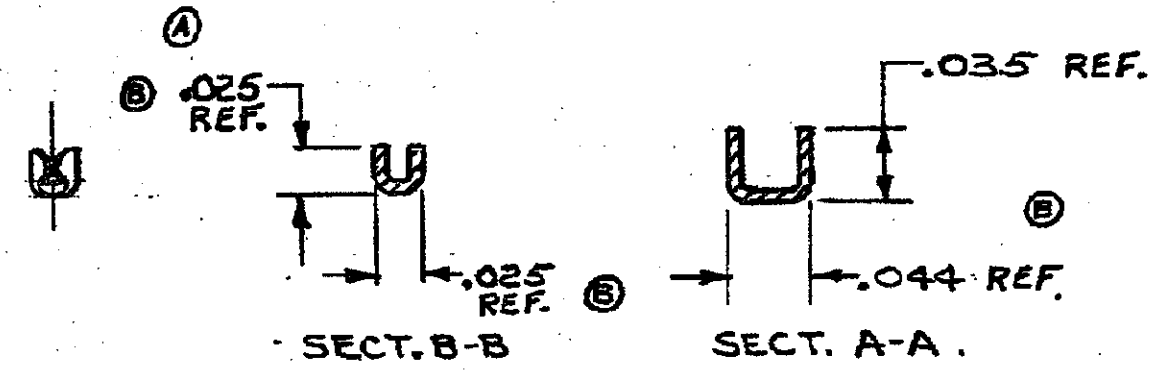
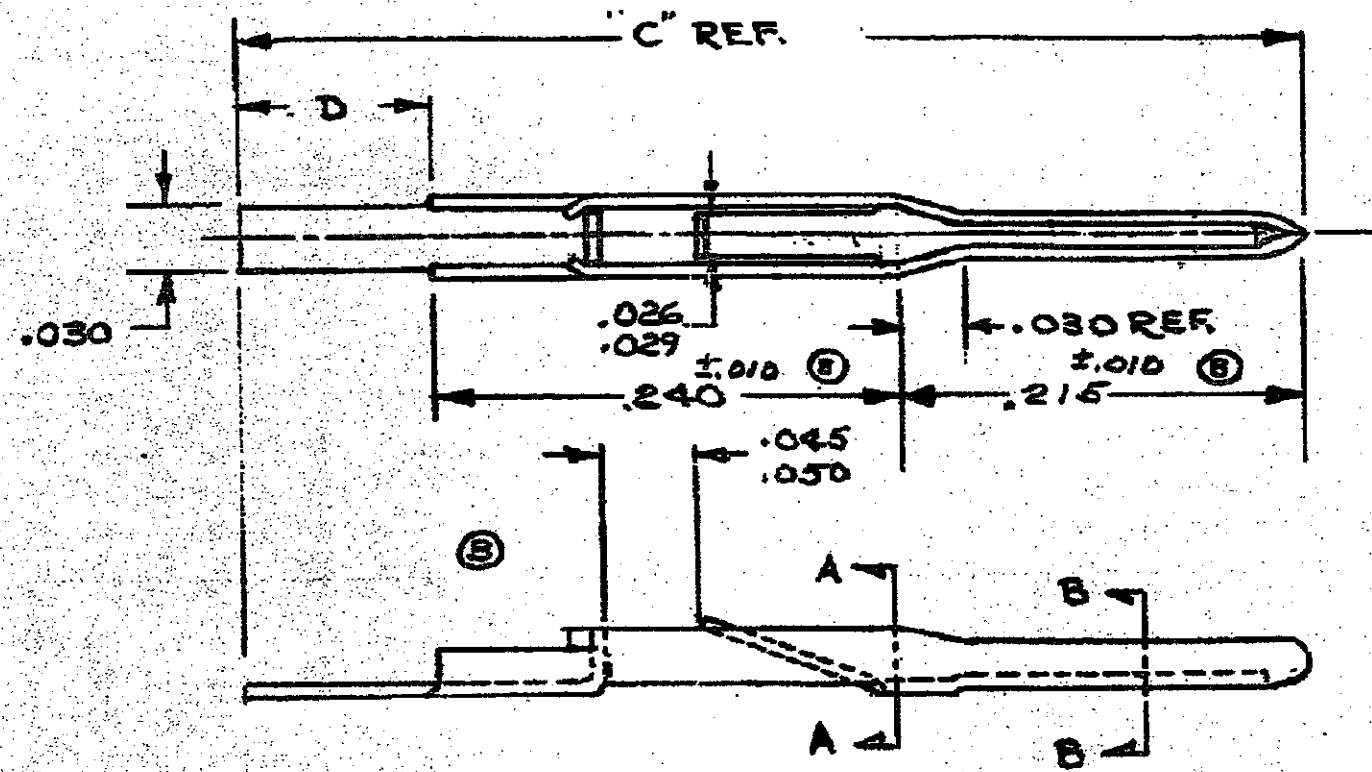


© 1966 BY AMP INCORPORATED. ALL RIGHTS RESERVED. AMP PRODUCTS COVERED BY PATENTS AND/OR PATENTS PENDING.

| ZONE | LTR | DESCRIPTION | DATE | APPROVED |
|------|-----|----------------------|----------|-------------------|
| | A | REVISED | Y-755 | 9-12-66 M.S. D.F. |
| | A1 | REVISED | 2622 | 8-6-70 M.S. D.H. |
| | B | REVISED | 3131 | 8-13-71 M.S. R.F. |
| | C | REVISED FINISH | 7225 m/s | 2-26-81 R.O. |
| | D | REV PER 0600-6466-97 | II | 10-98 [Signature] |



- ① .00003 GOLD OVER .00005 NICKEL IN CONTACT AREA, TIN-LEAD OVER NICKEL IN TAIL AREA.
- ② .00005 GOLD OVER .00005 NICKEL IN CONTACT AREA, TIN-LEAD OVER NICKEL IN TAIL AREA.

| | | | | | |
|-----|----------|------|------|----------|--------|
| ① | 202947-3 | .140 | .595 | BRASS | △ |
| 085 | 202947-2 | .140 | .595 | BRASS | △ |
| | PART NO. | "D" | "C" | MATERIAL | FINISH |

| | | | | | |
|--|--|----------------------------------|--|--|--|
| UNLESS OTHERWISE SPECIFIED DIM. ARE IN INCHES. TOLERANCES ON DECIMALS ±.005 ANGLES ± | | CONTRACT NO. 3-25-66 | | AMP INCORPORATED HARRISBURG, PENNSYLVANIA | |
| MATERIAL SEE TABLE | | DR. D.S. Heide 4/4/66 | | NAME CONTACT PIN | |
| HEAT TREAT FINISH SEE TABLE | | APPR. [Signature] 4/4/66 | | SIZE B | |
| AMP INFO LOG DEF. FO | | CHECKED BY F.B. Miller 1/9/66 | | CODE IDENT NO. 00779 | |
| | | | | NUMBER 202947 | |
| | | | | SCALE 10-1 | |
| | | | | WY CALC ACTUAL SHEET | |

CUSTOMER DRAWING

单击下面可查看定价，库存，交付和生命周期等信息

[>>TE Connectivity\(泰科\)](#)