

©1960 BY AMP INCORPORATED. ALL RIGHTS RESERVED. AMP PRODUCTS COVERED BY PATENTS AND/OR PATENTS PENDING.

NUMBER 42575

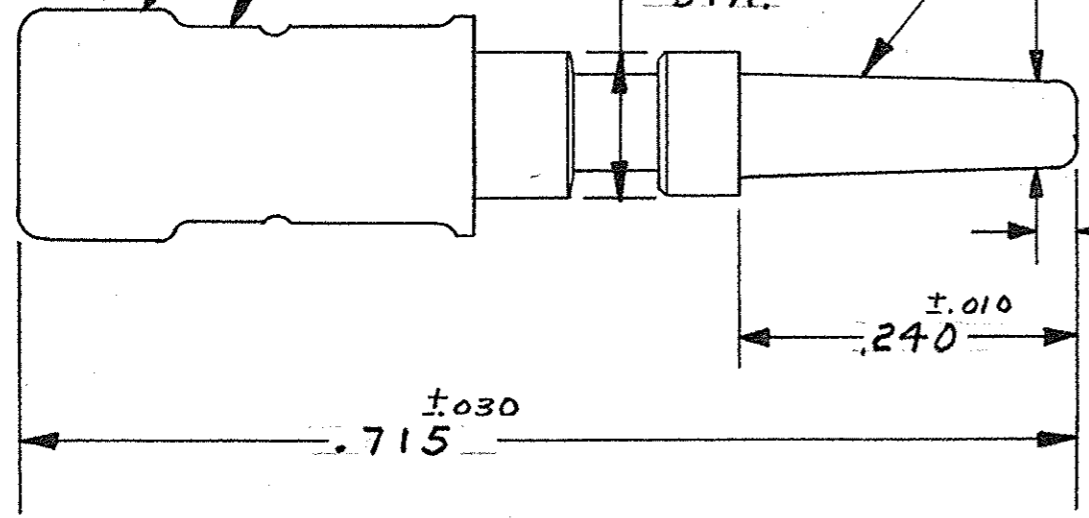
SLEEVE-COLOR SEE TABLE

SLEEVE-MATL: NYLON

$\pm .008$
.061 TAPER PER INCH ON DIA.

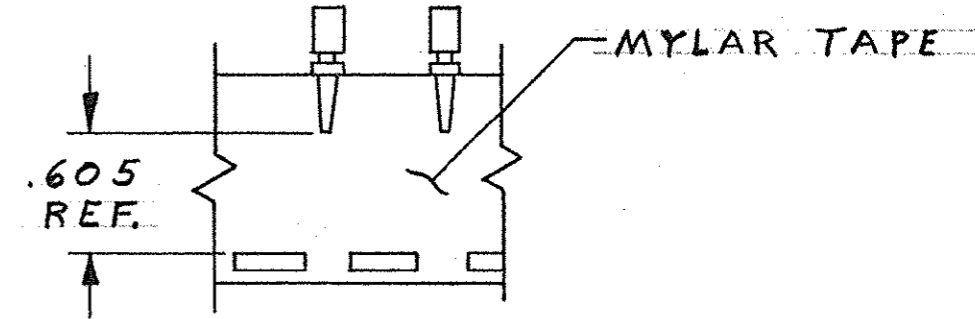
$\pm .010$
.095 DIA.

$\pm .0015$
.0560 DIA.

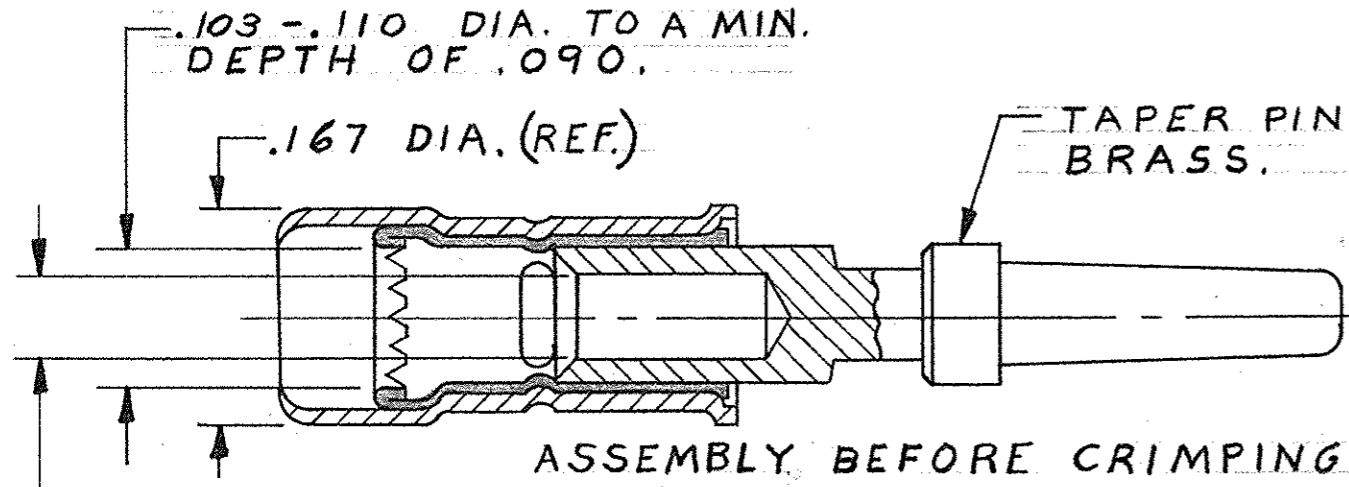


| REVISIONS | | | | |
|-----------|-----|-------------------------------------|----------|-----------|
| ZONE | LTR | DESCRIPTION | DATE | APPROVED |
| | N-1 | REDRAWN AND REVISED 1678 | 3-25-8 | M.S. J.H. |
| 3A | P | LOC SWASAB, DIST 12 WAS 39 ECN 9347 | 11-7-72 | JP |
| 3B | R | ADDED 1-42575-0 ECN 7986 | 2-25-75 | CFB |
| | S | BRIGHT TIN-LEAD WAS TIN EA 1818 | 6-18-81 | DS |
| | T | SLEEVE COLOR WAS WHITE ECN 52545 | 11-15-83 | DS |
| | U | OBSOLETE - 5 & 9 ECN 52954 | 2-19-85 | JM |
| | V | OBSOLETE - 7 & 1-0 ECN 53379 | 11-22-86 | RS |
| | W | REV PER DF-0257 | 1-16-88 | MS |
| | Y | REV PER OH14-0139-05 | 1-26-06 | PY RW |

1. INS. RANGE: .060 - .100 DIA.
WIRE RANGE: 20-18



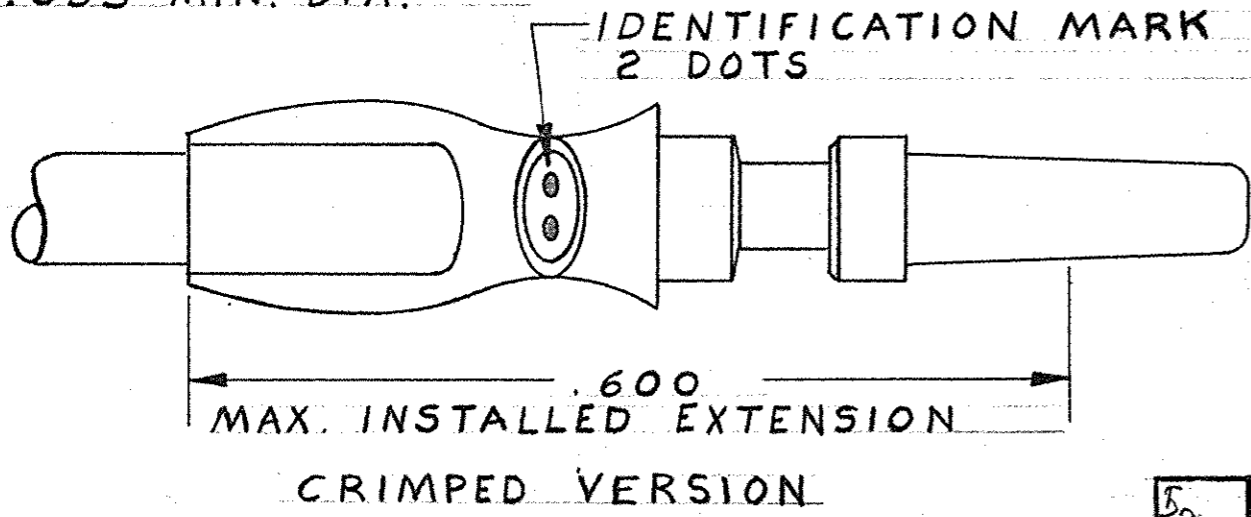
TAPE MOUNTED ASSY. NO'S.
42575-6 THRU 1-42575-0.



TAPER PIN MATL. BRASS.

ASSEMBLY BEFORE CRIMPING

| PART NO. | FINISH | SLEEVE-COLOR |
|---------------|----------------------------------|--------------|
| 5-42575-1 | .0001 MATTE TIN | NATURAL |
| OBS 1-42575-0 | .0001 GOLD OVER .0001 NICKEL | |
| OBS 42575-9 | .0002 GOLD OVER .000050 NICKEL | |
| 42575-8 | .000030 GOLD OVER .000050 NICKEL | |
| OBS 42575-7 | SILVER - .0002 THK. | |
| 42575-6 | BRIGHT TIN-LEAD .0002 THK | |
| OBS 42575-5 | .0002 GOLD OVER .000050 NICKEL | |
| 42575-4 | .0001 GOLD OVER .0001 NICKEL | |
| 42575-3 | .000030 GOLD OVER .000050 NICKEL | |
| OBS 42575-2 | SILVER - .0002 THK. | |
| 42575-1 | BRIGHT TIN-LEAD .0002 THK | |



IDENTIFICATION MARK 2 DOTS

.600
MAX. INSTALLED EXTENSION

CRIMPED VERSION

| | |
|------------------|------------|
| AMP INFO | |
| LOC 5300 | PRINT DF |
| DIET | HEAT TREAT |
| FINISH SEE TABLE | |

| | | |
|--|------------------------------------|--|
| UNLESS OTHERWISE SPECIFIED DIM. ARE IN INCHES. TOLERANCES ON: DECIMALS $\pm .015$ ANGLES \pm | CONTRACT NO. | AMP AMP INCORPORATED HARRISBURG, PENNSYLVANIA |
| | OR <i>M. Smith</i> 3-22-68 | |
| MATERIAL SEE CALLOUT | CHKD <i>S. Heide</i> 5/16/68 | SIZE B |
| APPD <i>Rossett</i> 5/16/68 | APPD <i>W. F. Green</i> 5-16-68 | CODE IDENT NO. 00779 |
| DSGN APPD | OTHER APPD | NUMBER 42575 |
| SCALE 8-1 | WT CALC | ACTUAL SHEET |

单击下面可查看定价，库存，交付和生命周期等信息

[>>TE Connectivity\(泰科\)](#)