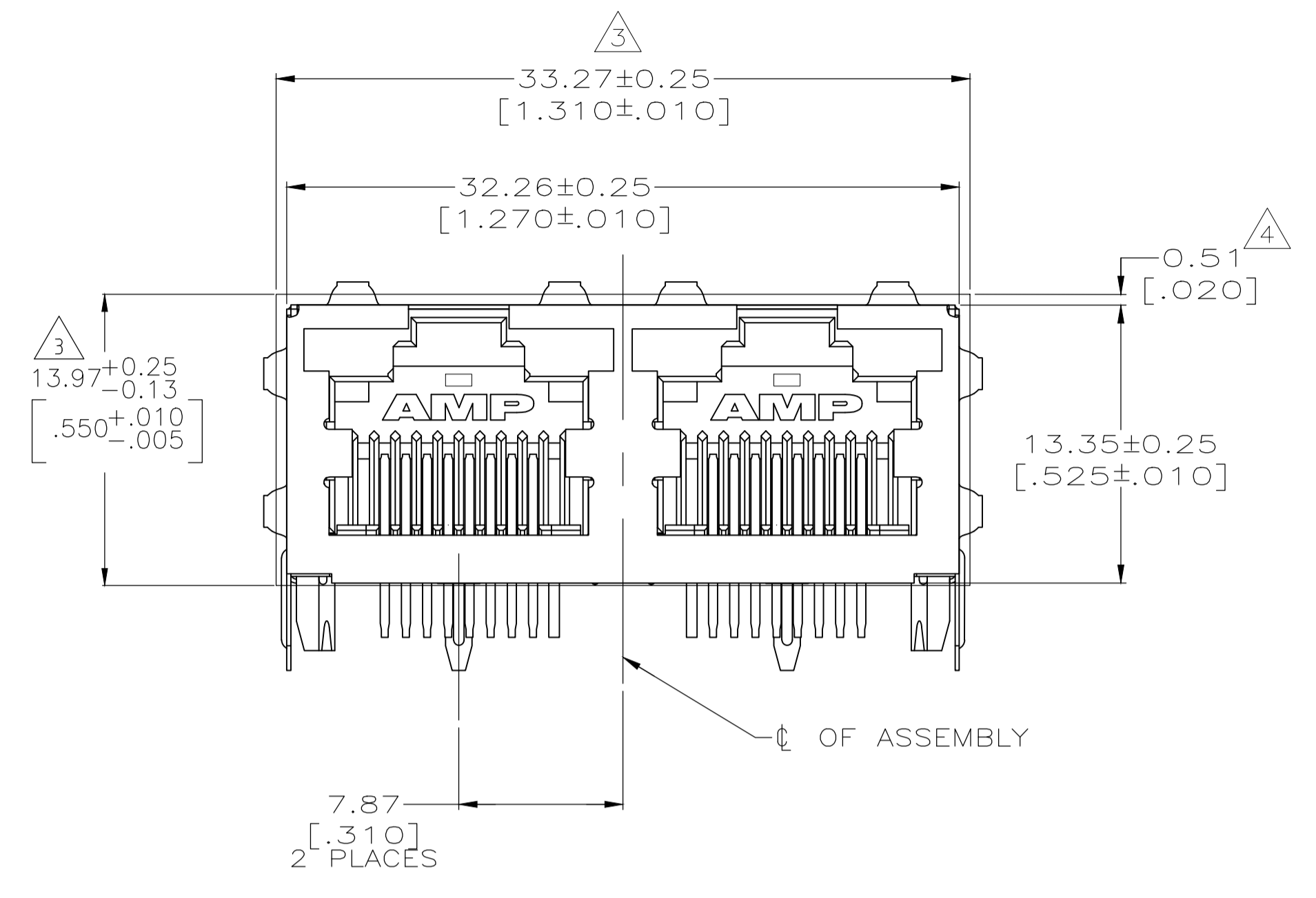
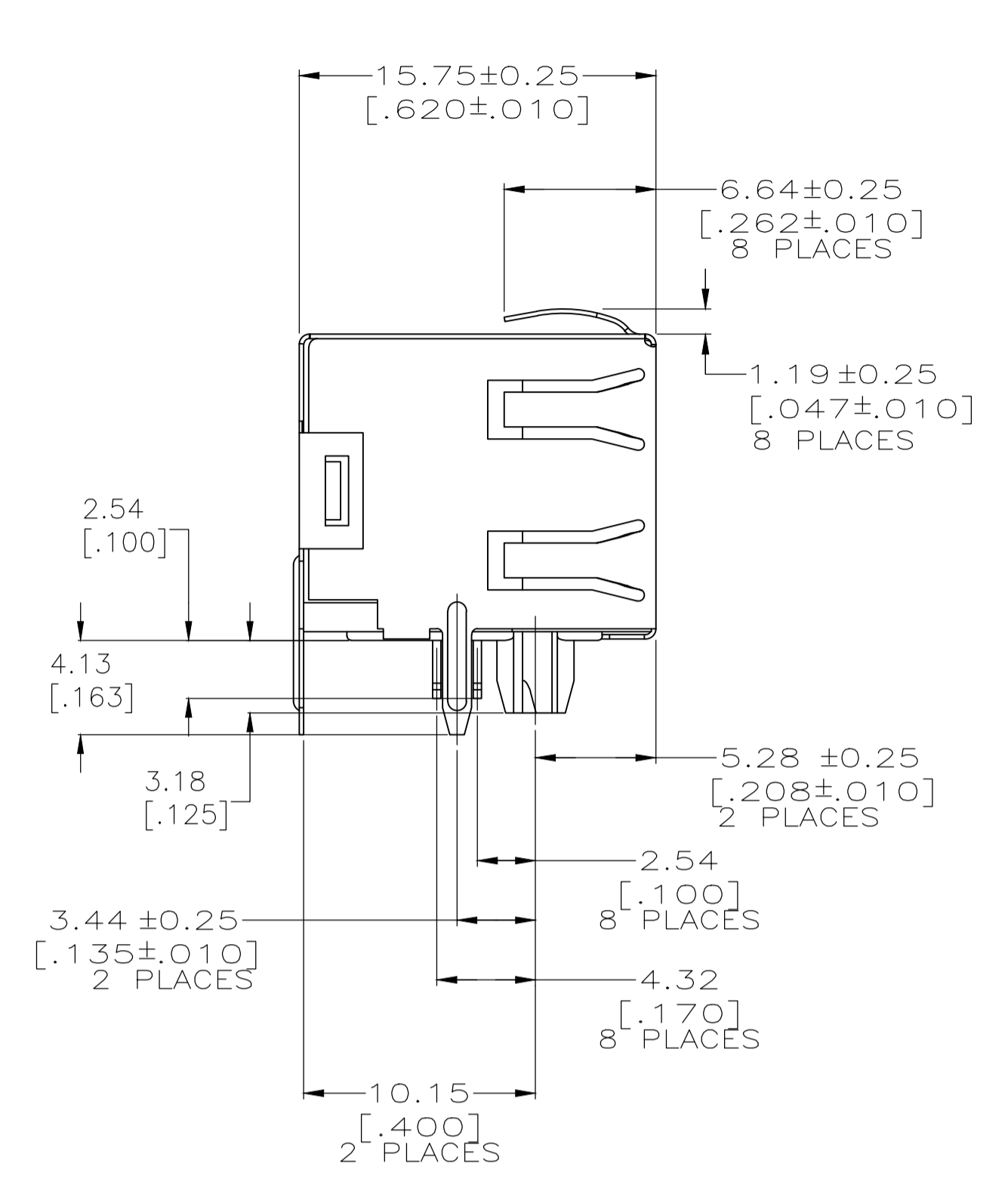
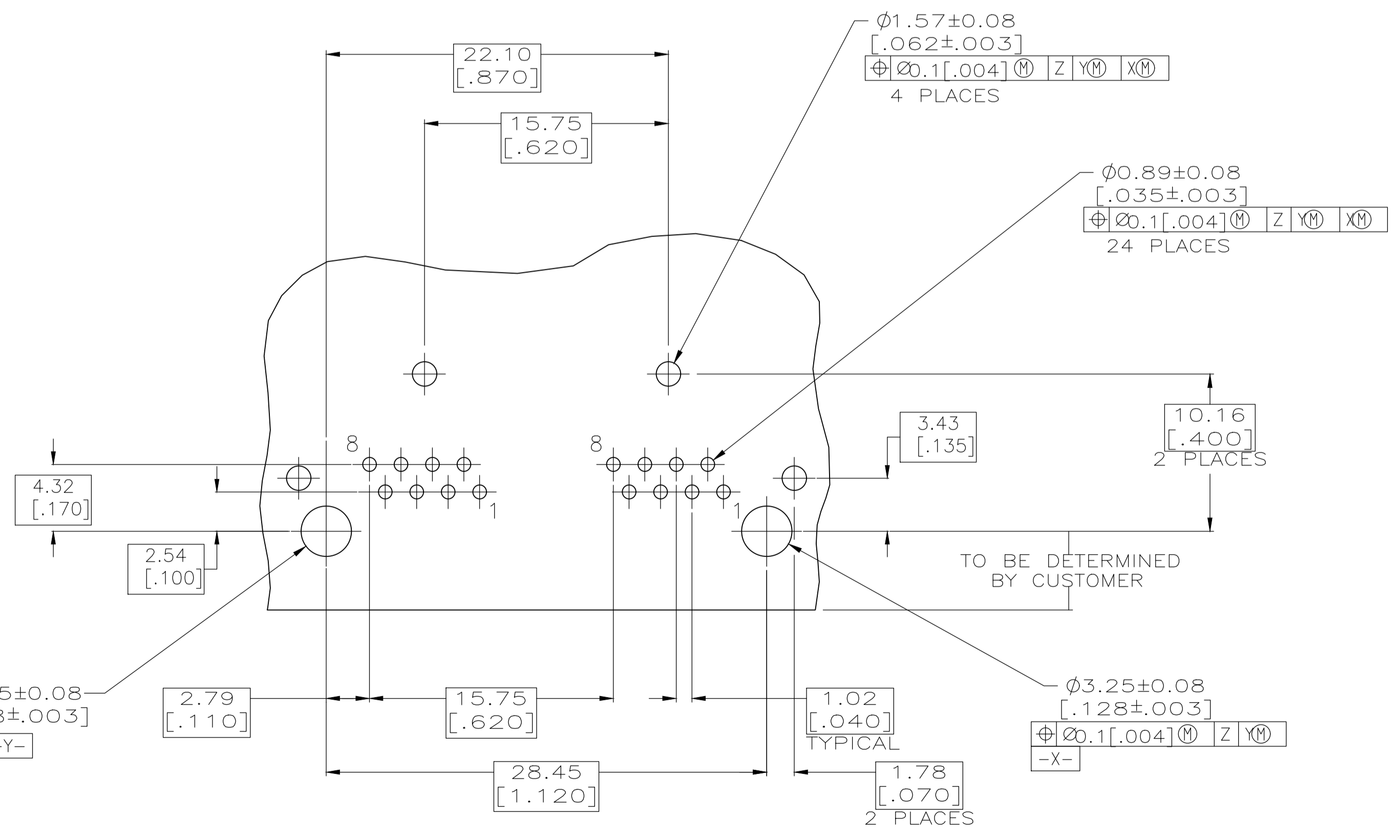


REVISIONS					
P	LTR	DESCRIPTION	DATE	DWN	APVD
C		ECC-18-014918	20AUG2019	RR	SH



- MATERIAL: HOUSING – HIGH TEMPERATURE THERMOPLASTIC, COLOR: BLACK, UL94V-0
 TERMINALS – 0.36[.014] THICK PHOS BRONZE PLATED WITH 3.81 μ m[.000150] MINIMUM THICK BRIGHT TIN LEAD IN SOLDER AREA. 1.27 μ m [0.000050] MINIMUM GOLD IN LOCALIZED PLATE AREA. ENTIRE TERMINAL PLATED WITH 1.27 μ m [0.000050] MINIMUM THICK NICKEL.
 SHIELD – 0.196[.0077] THICK COPPER ZINC ALLOY PREPLATED WITH 1.27 μ m[0.000050] MINIMUM SATIN NICKEL WITH 2.03 μ m[.000080] MINIMUM TIN POST DIPPED ON PCB GROUND TABS.
- JACK CAVITY CONFORMS TO FCC RULES AND REGULATIONS PART 68, SUBPART F.

- \triangle SUGGESTED PANEL OPENING DIMENSIONS.
- \triangle SUGGESTED CLEARANCE BETWEEN TOP OF CONNECTOR AND TOP PANEL OPENING.



SUGGESTED PRINTED CIRCUIT BOARD LAYOUT
(COMPONENT SIDE)

OBSOLETED 1116522-1
PART NUMBER

THIS DRAWING IS A CONTROLLED DOCUMENT.		DIN DL DRUMMOND 02-FEB-99	TE Connectivity	
DIMENSIONS: mm [INCHES]		DL DRUMMOND 04-FEB-99	NAME	
TOLERANCES UNLESS OTHERWISE SPECIFIED:		EC LAURER 05-FEB-99	INVERTED MODULAR JACK ASSEMBLY, 1X2, SHIELDED, PANEL GROUND	
0. PLC	± -	PRODUCT SPEC	108-1163-4	
1. PLC	± -	APPLICATION SPEC	114-2154	
2. PLC	± 0.25[.01]	SIZE	CAGE CODE	DRAWING NO
3. PLC	± 0.13[.005]	WEIGHT	0.000000	A1 00779
4. PLC	± -	CUSTOMER DRAWING	SCALE	4:1
ANGLES	± -		SHEET	1 OF 1
SEE NOTE 1	SEE NOTE 1		REV	C

单击下面可查看定价，库存，交付和生命周期等信息

[>>TE Connectivity\(泰科\)](#)