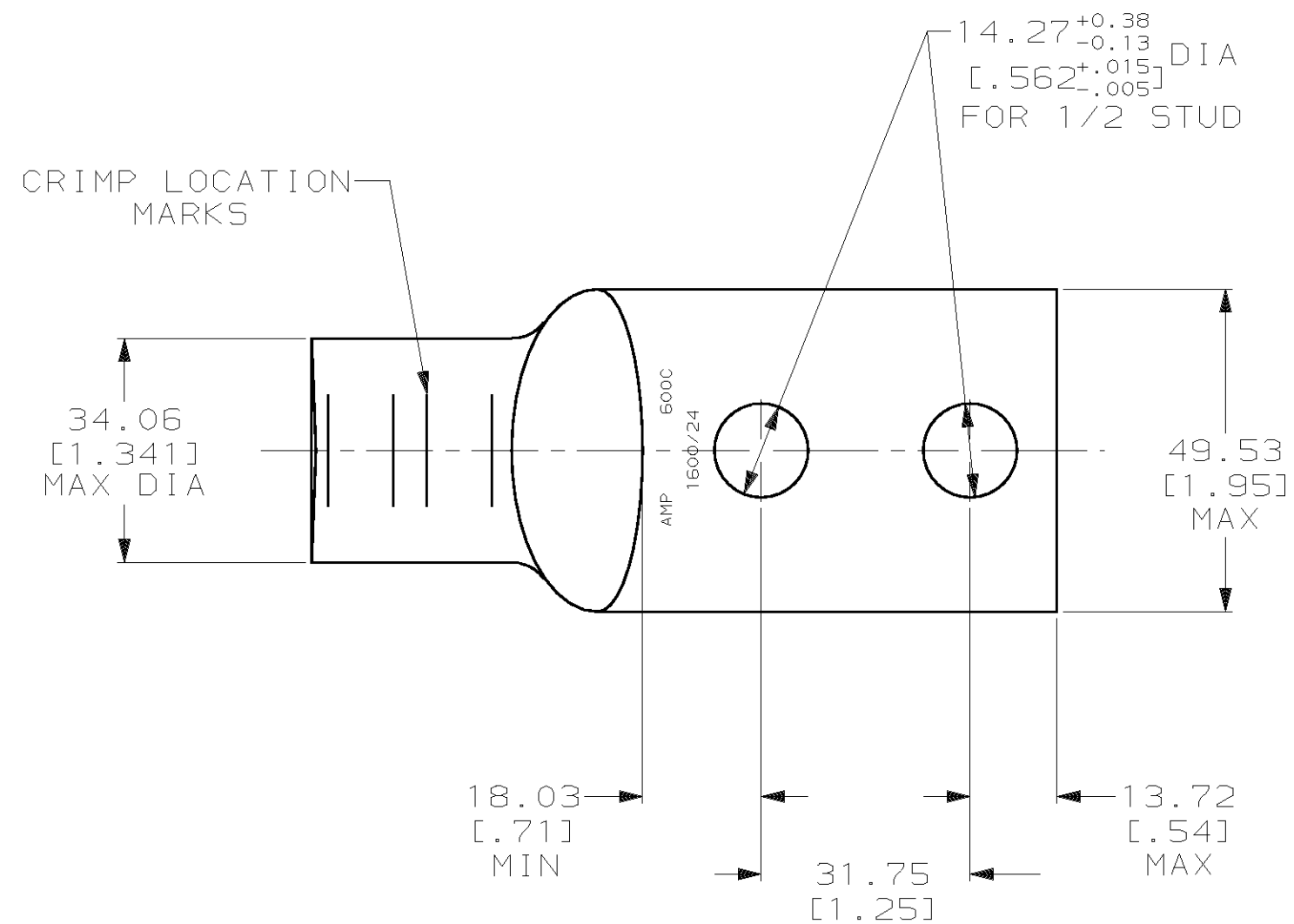
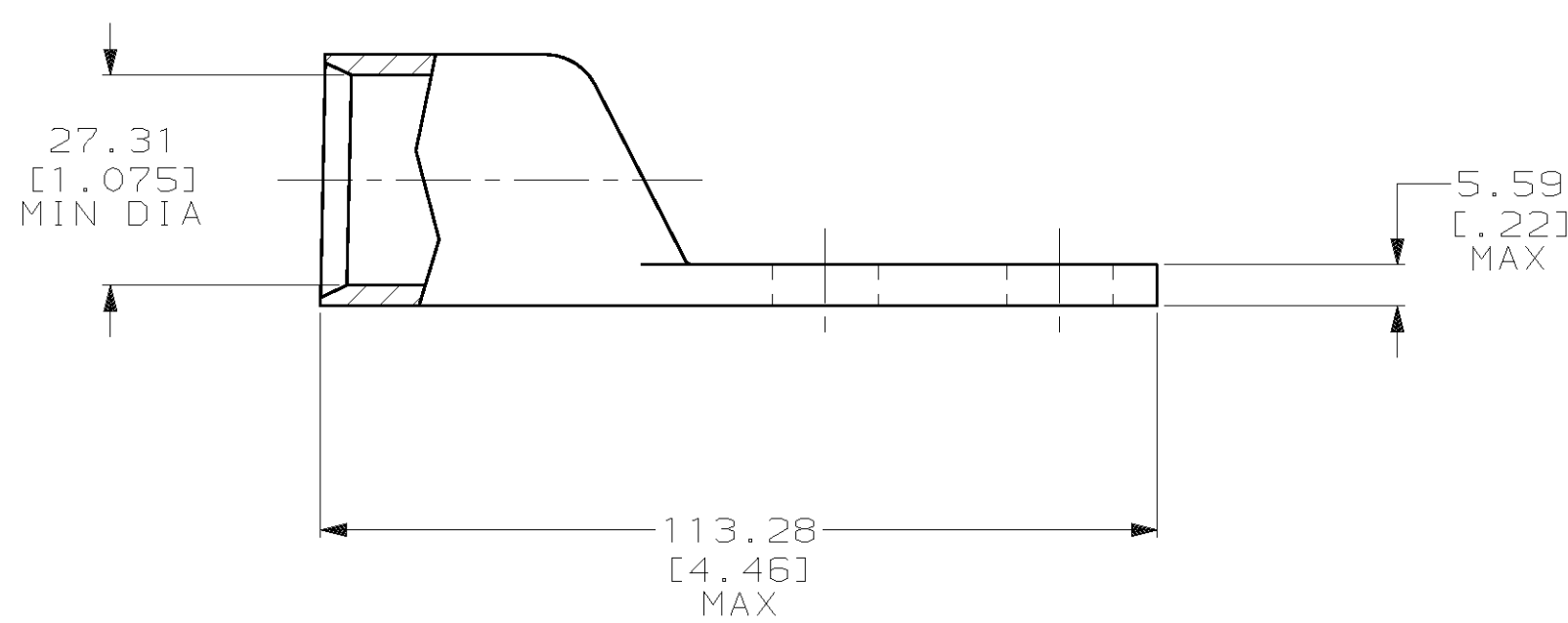


THIS DRAWING IS UNPUBLISHED. RELEASED FOR PUBLICATION ,19 .
 © COPYRIGHT 19 BY AMP INCORPORATED. ALL INTERNATIONAL RIGHTS RESERVED.

LOC		DIST		P		F		ZONE		LTR		REVISIONS	
DESCRIPTION		DATE		APPD									
G	86											D	REV PER 0G3A-0561-01
												07OCT02	JR/MS



1 CIRCULAR MIL RANGE: 550-650 MCM
 2 TIN PL 0.00381 [0.000150] MIN THK PER MIL-T-10727



DO NOT SCALE PRINT. UNLESS SPECIFIED DIMENSIONS IN mm [INCHES] TOLERANCES ON : 2 PLC DEC ± 0.51 [0.020] 3 PLC DEC ± - ANGLES ± -		DR 04/05/90 DK SCHRUM	AMP INCORPORATED Harrisburg, Pa. 17105	
MATERIAL ANNEALED COPPER ASTM B-75		CHK 25JAN95 MS FEHER		
FINISH △		APPD 25JAN95 WJ VOCKROTH	NAME TERMINAL, AMPPOWER, WIRE SIZE: 600 MCM	
APPLICATION SPEC -		APPD 25JAN95 TL SHUTTER	PRODUCT SPEC 108-30200	DRAWING NO 276916
WEIGHT .514 LB		SCALE 1:1	SIZE C CAGE CODE 00779	SHEET 1 OF 1

276916-1
PART NO

单击下面可查看定价，库存，交付和生命周期等信息

[>>TE Connectivity\(泰科\)](#)