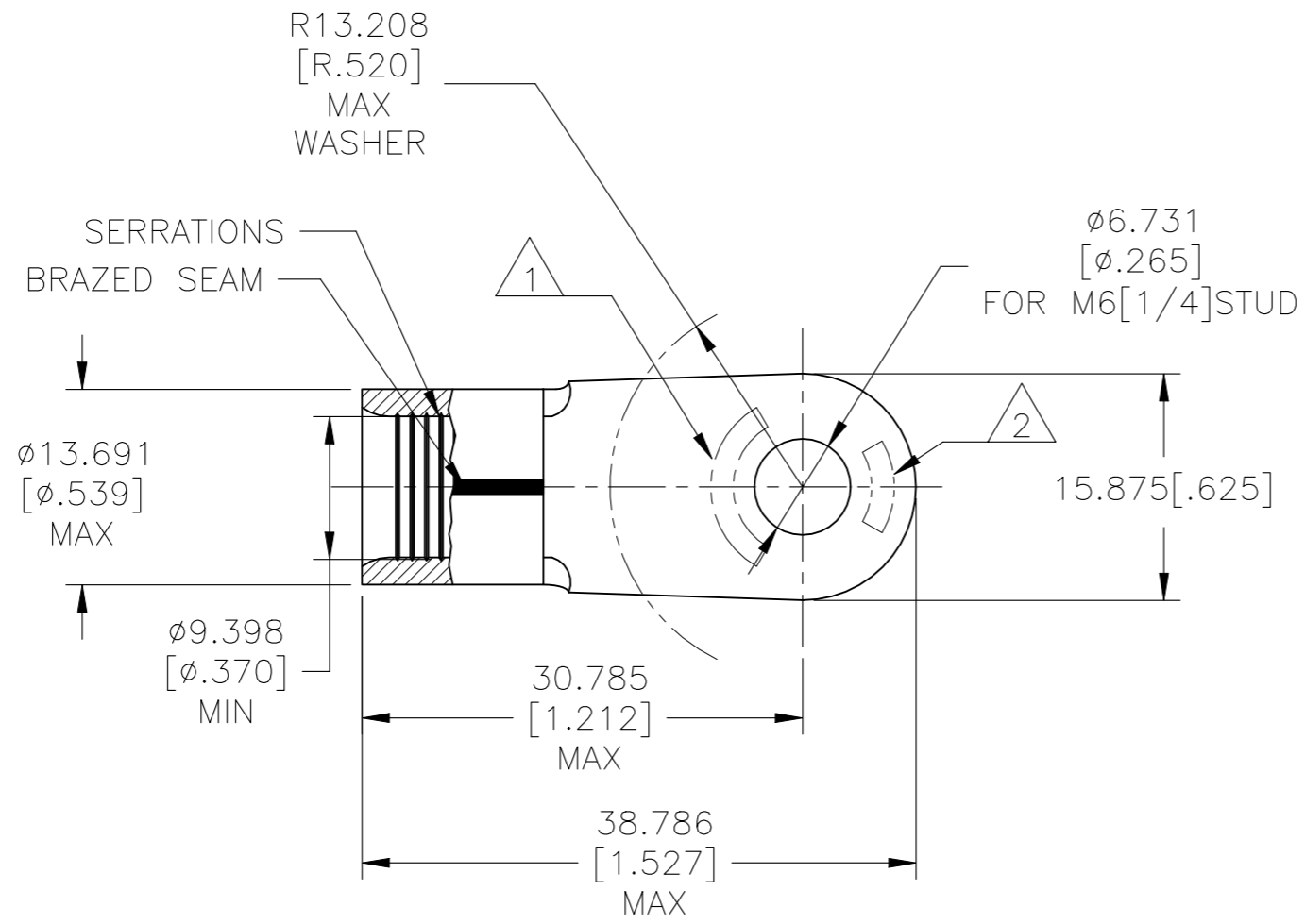


P	LTR	DESCRIPTION	DATE	DWN	APVD
	K	ECO-19-009164	06OCT2021	RK	DR



AMP WIRE RANGE	E13288 Listed
2 AWG SOLID OR STRANDED	2 AWG STRANDED
LR7189 Certified	MILITARY P/N AND CLASS
2 AWG SOLID OR STRANDED	MS20659-113 CLASS 2

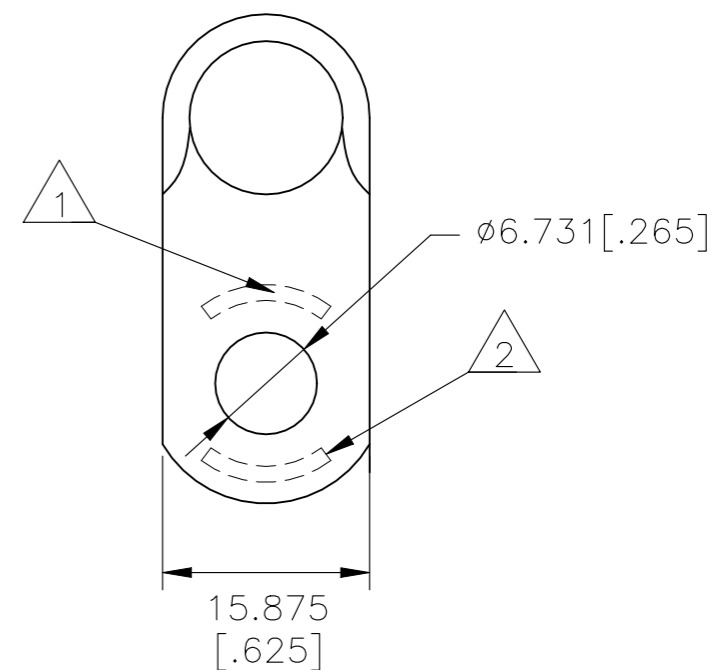
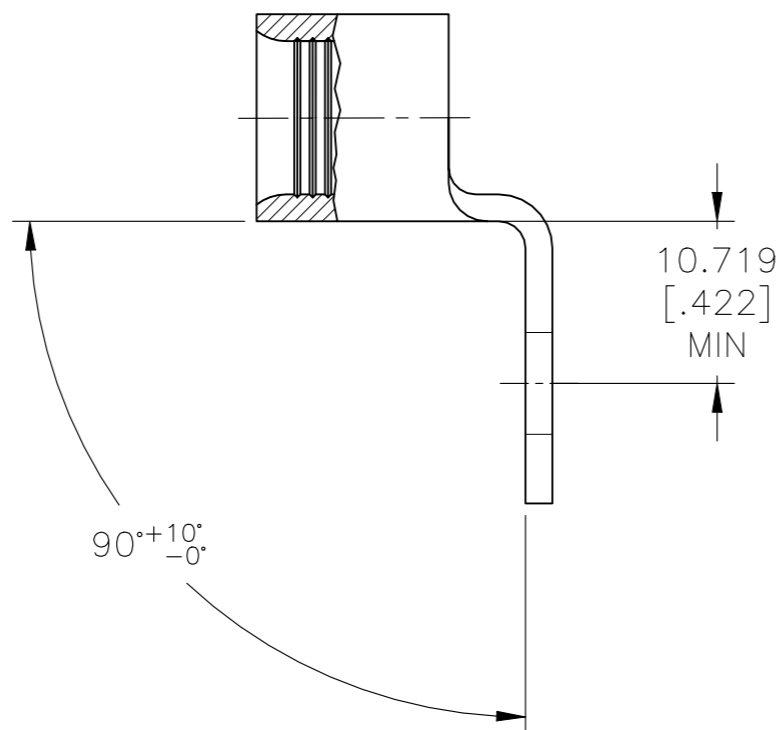
- STAMP AMP 2W* APPROX AS SHOWN.
- STAMP 60-75 APPROX AS SHOWN.
- 3 MATERIAL THK: 1.778±0.076[.070±.003].
- TIN PLATE 0.00254[.000100] MIN EXT THK PER ASTM B545.
- GOLD PLATE 0.00127[.000050] MIN. EXT. THK. PER MIL-G-45204 OVER NICKEL PLATE 0.00076 [0.000030] MIN. EXT. THK. PER SAE AMS QQ-N-290. OVER CU FLASH PER SAE AMS2418

- NICKEL PLATE 0.00762[.000300] MIN. EXT. THK. PER SAE AMS QQ-N-290.
- PRODUCT SPECIFICATION UL 486A-B, SAE AS7928
- PRODUCT SPECIFICATION 108-32046, APPLICATION SPECIFICATION 114-2162


QTY.	PACKAGE TYPE	MAX RECOMMENDED TEMPERATURE	FINISH	PART NO
25		170°C[338°F] MAX		8-320383-3
50		343°C[649°F] MAX		2-320383-2
50	LOOSE PIECE	260°C[500°F] MAX		2-320383-1
50		170°C[338°F] MAX		320383-1
50		170°C[338°F] MAX		320383

AMP INCORPORATED CUSTOMER SERVICE SYSTEMS		MAX RECOMMENDED OPERATING TEMPERATURE: SEE TABLE	THIS DRAWING IS A CONTROLLED DOCUMENT.		DWN DK SCHRUM 5/24/93	TE Connectivity			
FOR ADDITIONAL PRODUCT INFORMATION OR COPIES OF DRAWINGS AND TECHNICAL DOCUMENTS	PRODUCT INFORMATION CENTER 1-800-522-6752	VOLTAGE RATING: NOT APPLICABLE	DIMENSIONS: mm [INCHES]	TOLERANCES UNLESS OTHERWISE SPECIFIED:	CHK RD HEIM 1/27/94				
FOR APPLICATION TOOLING INFORMATION	TOOLING ASSISTANCE CENTER 1-800-722-1111	WIRE CROSS SECTIONAL AREA RANGE: 26.7-42.4mm² [52,600-83,700] CIR MILS SOLID OR STRANDED		0 PLC ± - 1 PLC ± - 2 PLC ± - 3 PLC ± 0.127[.005] 4 PLC ± - ANGLES ± -	APVD RE ROSER 1/27/94	APPLICATION SPEC			
FOR ORDER ENTRY	1-800-526-5142		MATERIAL COPPER PER ASTM B152 ANNEALED	FINISH SEE TABLE	PRODUCT SPEC 	SIZE A3	CAGE CODE -	DRAWING NO C-320383	RESTRICTED TO -
CUSTOMER DRAWING					WEIGHT -	SCALE 2:1	SHEET 1 OF 2	REV K	

REVISIONS					
P	LTR	DESCRIPTION	DATE	DWN	APVD
-	-	SEE SHEET 1	-	-	-



320383-1 ONLY

THIS DRAWING IS A CONTROLLED DOCUMENT.		DWN DK SCHRUM 5/24/93	 TE Connectivity														
DIMENSIONS: mm [INCHES]		CHK RD HEIM 1/27/94															
TOLERANCES UNLESS OTHERWISE SPECIFIED:		APVD RE ROSER 1/27/94	NAME TERMINAL, RING TONGUE, SOLISTRAND AND STRATO-THERM HR, WIRE SIZE: 2 AWG														
<table border="0"> <tr> <td>0 PLC</td> <td>± -</td> </tr> <tr> <td>1 PLC</td> <td>± -</td> </tr> <tr> <td>2 PLC</td> <td>± -</td> </tr> <tr> <td>3 PLC</td> <td>± 0.127[.005]</td> </tr> <tr> <td>4 PLC</td> <td>± -</td> </tr> <tr> <td>ANGLES</td> <td>± -</td> </tr> </table>		0 PLC	± -	1 PLC	± -	2 PLC	± -	3 PLC	± 0.127[.005]	4 PLC	± -	ANGLES	± -	PRODUCT SPEC -	APPLICATION SPEC -		
0 PLC	± -																
1 PLC	± -																
2 PLC	± -																
3 PLC	± 0.127[.005]																
4 PLC	± -																
ANGLES	± -																
MATERIAL COPPER PER ASTM B-152		FINISH SEE TABLE	WEIGHT -	SIZE A3	CAGE CODE -	DRAWING NO G-320383	RESTRICTED TO -										
CUSTOMER DRAWING			SCALE 2:1	SHEET 2 OF 2	REV K												

单击下面可查看定价，库存，交付和生命周期等信息

[>>TE Connectivity\(泰科\)](#)