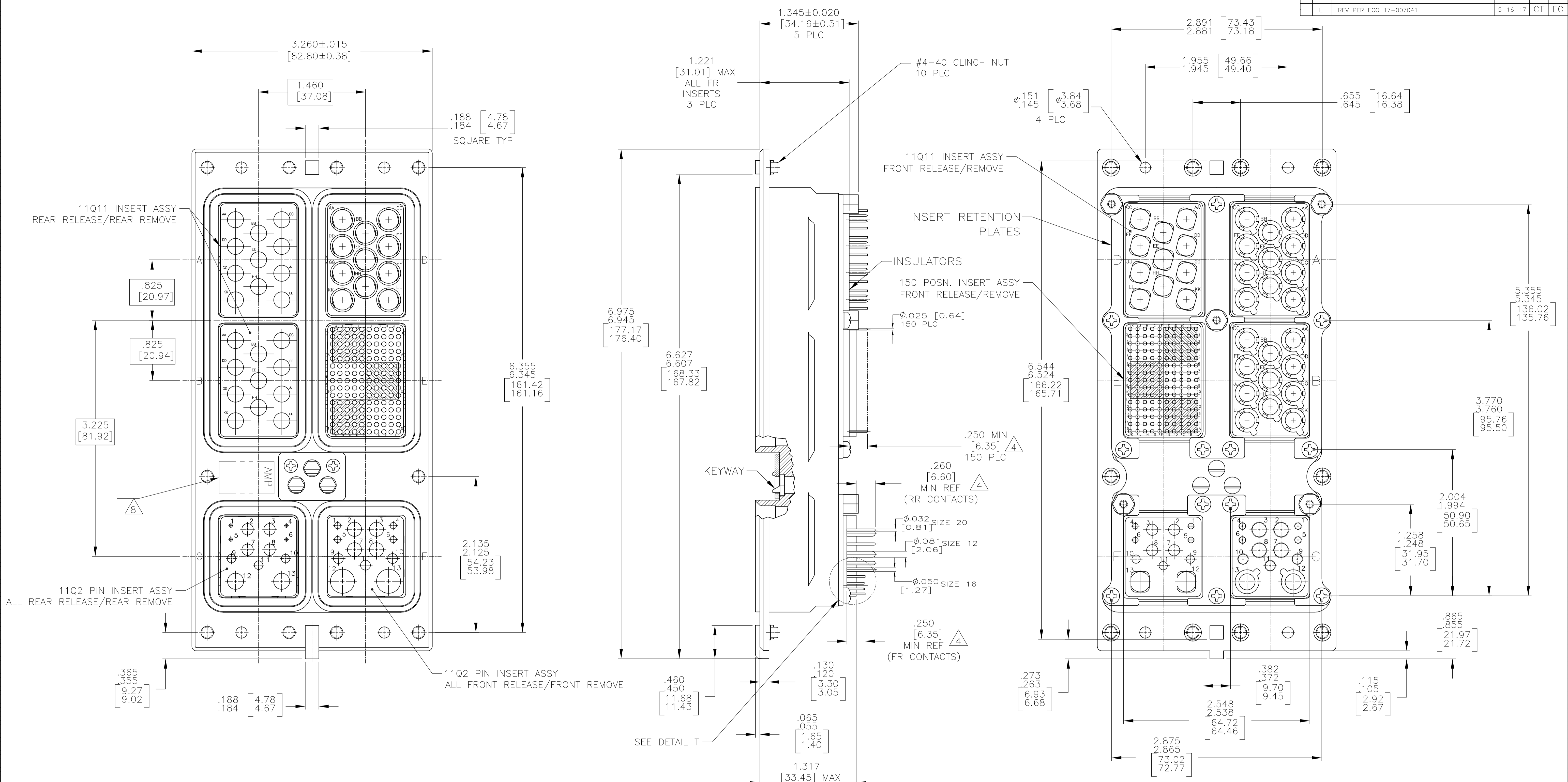
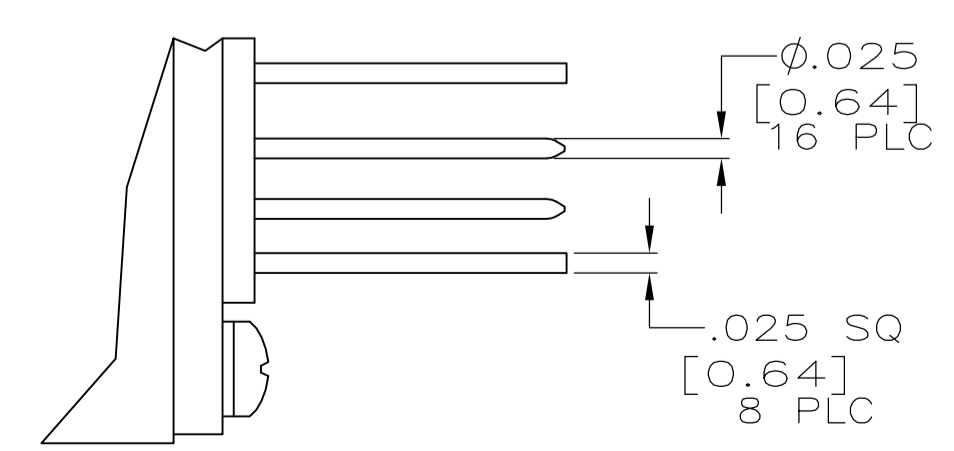


REVISIONS				
REV	DATE	BY	APPV	DESCRIPTION
E	5-16-17	CT	EO	REV PER ECO 17-007041



- CONNECTOR DIMENSIONS ARE PER ARINC 600 SPECIFICATION.
- CONNECTOR IS SUPPLIED WITH CONTACTS (PER TABLE) ASSEMBLED AS SHOWN.
- KEYING SHOWN IN POSITION "01" FOR ILLUSTRATION ONLY. CONNECTORS SHIPPED WITH KEYING INSTALLED IN POSITION PER TABLE. FOR POSITION "00" KEYING HARDWARE SHIPPED UNASSEMBLED.
- WITH CONTACT FULLY SEATED IN CAVITY.
- CONTACTS NOT SHOWN IN FRONT & REAR VIEWS FOR CLARITY.
- DUST COVERS ARE INSTALLED FOR SHIPPING. (NOT SHOWN)
- TE LOGO APPEARS IN THIS APPROXIMATE LOCATION ON MACHINED FROM BILLET SHELLS.
- ASSEMBLY SHOWN WITH DIE CAST SHELL. ASSEMBLIES WITH MACHINED SHELLS MAY VARY SLIGHTLY IN APPEARANCE.



COMPONENT	MATERIAL	FINISH
SHELL	DIE CAST ALUMINUM PER ASTM-B-85 OR ASTM B211 6061-T6 OR ASTM B209 2024-T4	CHEMICAL COVERAGE COATING PER MIL-C-5541, CLASS 1A
RETENTION PLATES	ALUMINUM ALLOY PER ASTM-B-209	CHEMICAL COVERAGE COATING PER MIL-C-5541, CLASS 1A
SCREWS AND LOCKWASHERS	STEEL OR STAINLESS STEEL	CHROMATE OVER ZINC OR PASSIVATED
POLARIZING KEYS	ZINC ALLOY PER ASTM-B-86	-
150 & 11Q2 INSERTS	THERMOSET OR PPS	-
11Q11 INSERTS	ALUMINUM ALLOY	ELECTROLESS NICKEL
POLARIZING KEY RETAINING PLATE	ALUMINUM ALLOY PER ASTM-B-209	BLUE ANODIZED PER MIL-A-8625
STANDOFFS & LOCKWASHERS	STAINLESS STEEL	PASSIVATED

KEYING POSITION	CONTACTS INCLUDED AND INSTALLED	PART NUMBER
03	MODULE A & B NO CONTACTS SUPPLIED MODULE C 1663129-5 (RR SIZE 12 POSTED, QTY=4) 1663128-8 (RR SIZE 16 POSTED, QTY=3) 1663533-2 (RR SIZE 20 POSTED, QTY=4) MODULE D 1445626-4 (SIZE 8 QUADRAX POSTED, QTY=11) MODULE E 211431-4 (SIZE 22, QTY=150) MODULE F 448140-3 (SIZE 12 POSTED, QTY=4) 1-448138-5 (SIZE 20 POSTED, QTY=4) 1-448139-1 (SIZE 16 POSTED, QTY=3) 1445626-4 (SIZE 8 QUADRAX POSTED, QTY=2)	1757542-1

单击下面可查看定价，库存，交付和生命周期等信息

[>>TE Connectivity\(泰科\)](#)