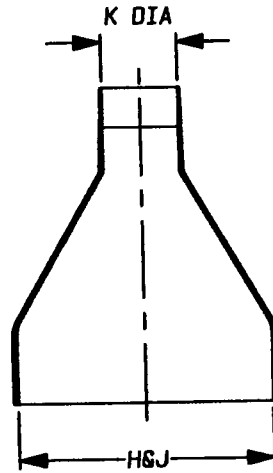
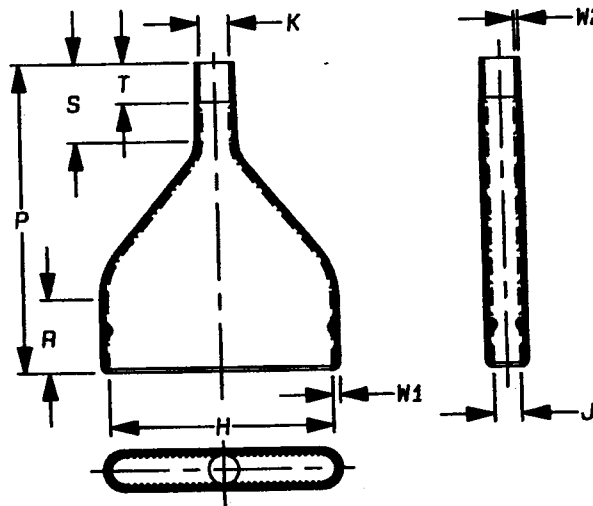


a) Part as supplied

212W053



b) Part after unrestricted recovery



DIMENSIONS (in millimetres)

Part No.	H		J		K		P	R	S	T	W1	W2
	Min	Max	Min	Max	Min	Max	±10%	±10%	±10%	±10%	±10%	±10%
	a	b	a	b	a	b	b	b	b	b	b	b
212W053	65	60	12	7.4	18	8.1	80	20	20	10	2.0	1.0

This part is supplied with internal gravures.

Copyright (!)

Urheberrechte

The copyright in this drawing is the property of Raychem Ltd. The drawing is issued on condition that it is not copied, reproduced or disclosed to a third party, either in whole or in part without the prior written consent of Raychem Ltd.

Drawn A.LILLEY. Checked Issue 2 Date October 1998

Conforms to ISO Recommendations
3rd Angle Projection
Not to Scale

Approval
Design

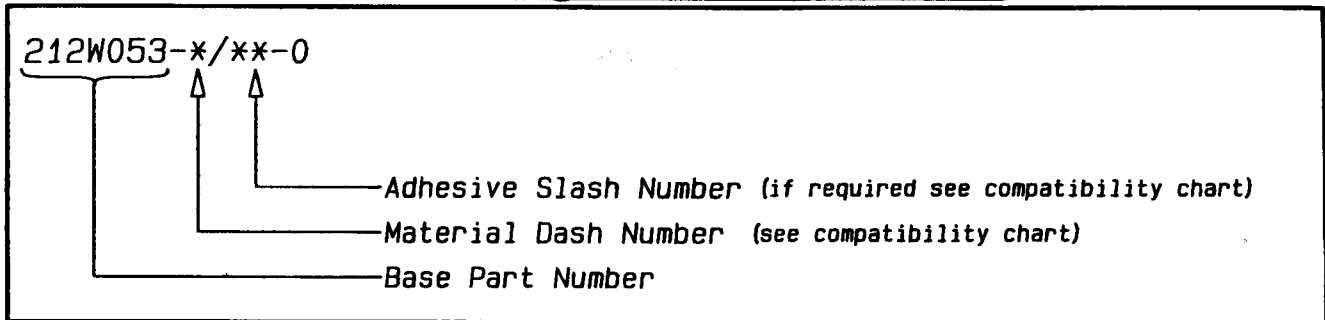
MKTG.

G.A. Downloaded From Oneyac.com



Iss.	Date	E.C.R. No.	Details of Change
2	October 1998	***	Redrawn on CAD

(Ordering Information)



(COMPATIBILITY CHART)

MATERIAL DASH NUMBER	MATERIAL DESCRIPTION	COATING SLASH NUMBER
-3	POLYOLEFIN, SEMI-RIGID	/42, /86
-4	POLYOLEFIN, FLEXIBLE	/42, /86
-25	ELASTOMER, FLUID RESISTANT	/86, /225

AS SUPPLIED DIMENSIONS ARE FOR UNCOATED PARTS,
WHEN COATING IS ADDED, ENTRY DIAMETERS WILL REDUCE BY 1.5mm MAX.

Raychem
 Electronics OEM Division Europe
 Swindon, Wiltshire, England.
 Telephone: (01793) 528171 Fax: 573923

单击下面可查看定价，库存，交付和生命周期等信息

[>>TE Connectivity\(泰科\)](#)