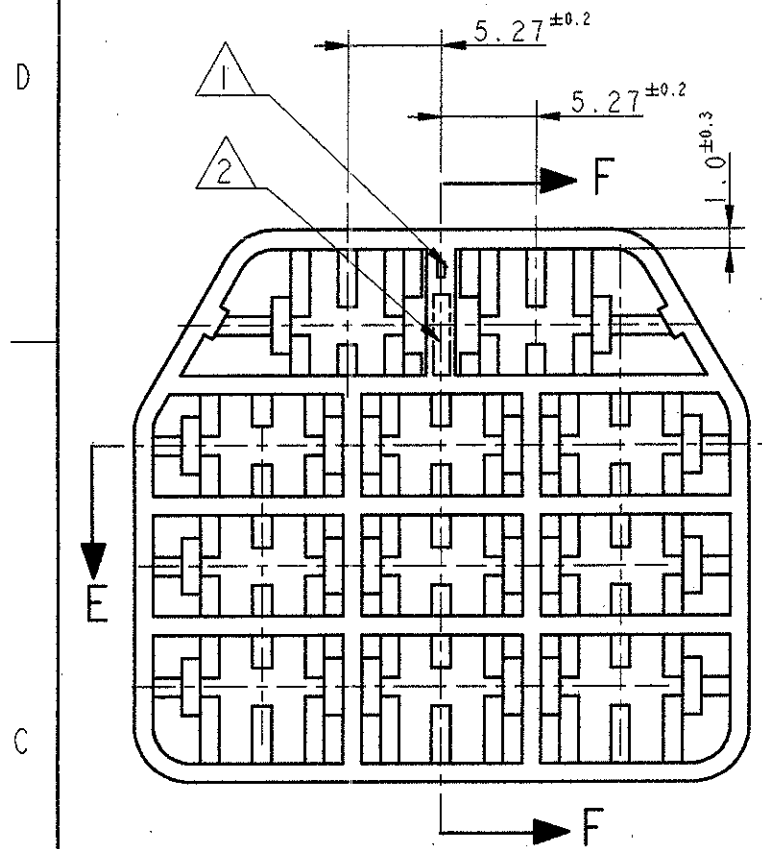
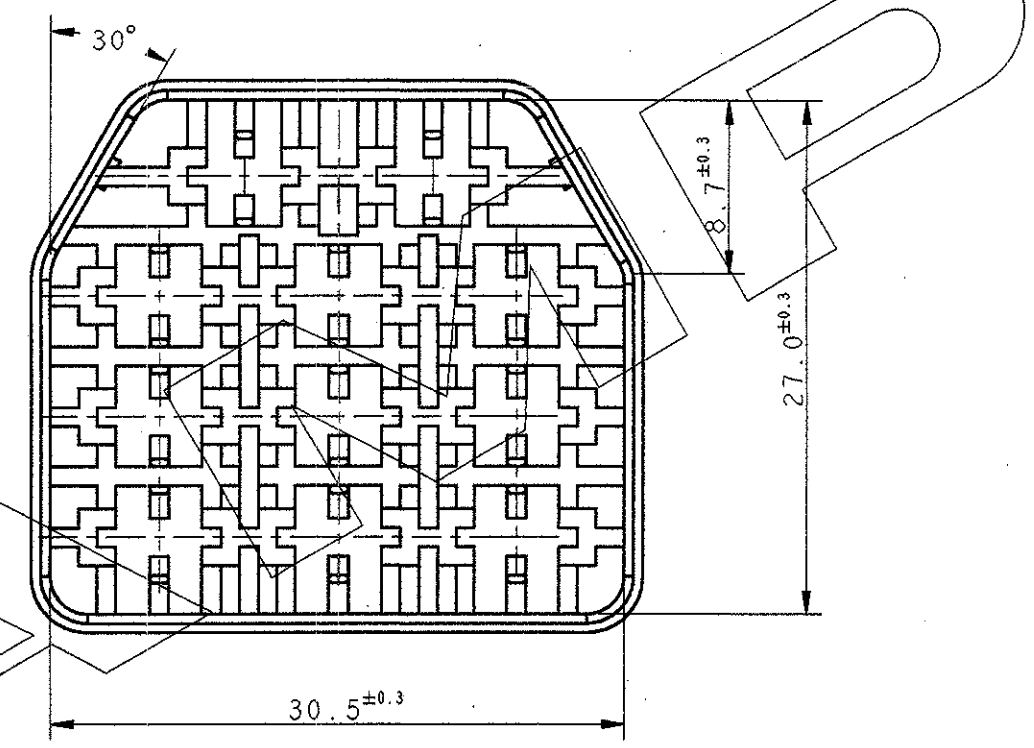
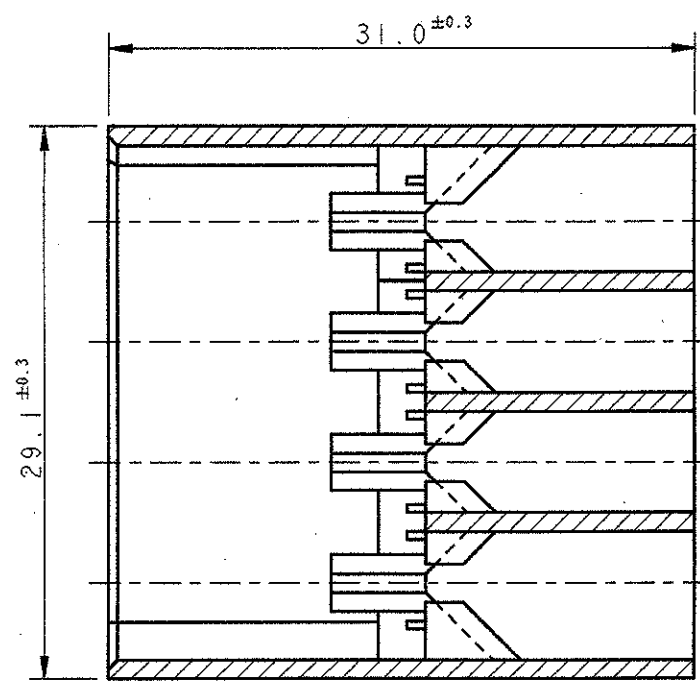


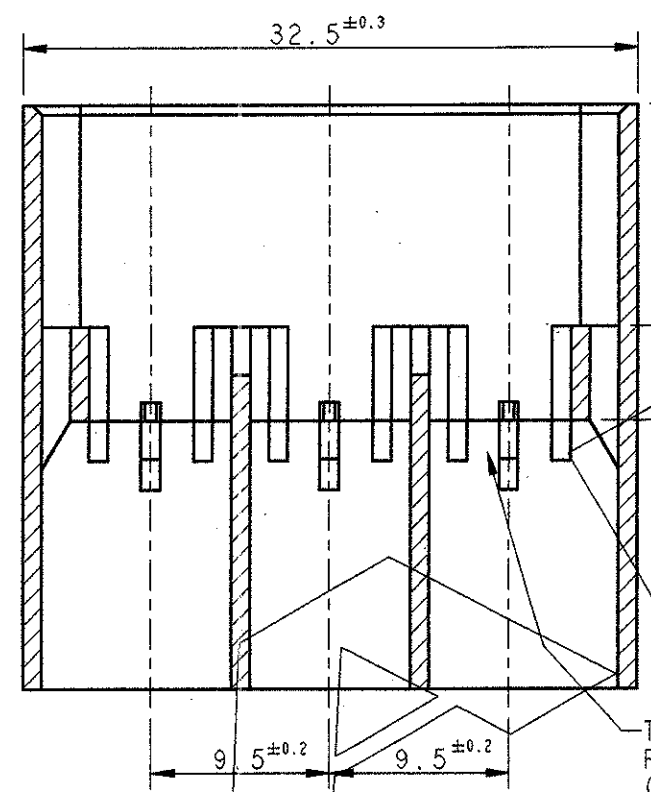
REVISIONS REVISIONI		DATE DATA	DWN DIS.	APVD APP.
P	LTR REV	DESCRIPTION DESCRIZIONE		
	D	REVISED PER ET00-0080-94	28/03/94	M.P. C.T.
	LI	REDRAWN BY CAD PER ET00-0195-98	14 JUL 98	<i>[Signature]</i>



SEZIONE F-F
 SECTION F-F



SEZIONE E-E
 SECTION E-E



TIPICA CAVITA' PER TERMINALE AMP
 FASTIN-FASTON SR.6.35mm.
 (TYPICAL CAVITY FOR AMP
 FASTIN-FASTON .250 SR.)

NERO (BLACK)	PA 6.6 (PA 6.6 UNFILLED)	280263-5
GIALLO (YELLOW)		280263-4 ³
BLU (BLUE)		280263-3 ³
VERDE (GREEN)		280262-2 ³
ROSSO (RED)		280263-1 ³
NATURALE (NATURAL)		280263-0
COLORE (COLOUR)		MATERIALE (MATERIAL)

- 1 NUMERO DI IMPRONTA STAMPO
(MOULD CAVITY IDENTIFICATION NO.)
- 2 MARCHIO DI FABBRICA **AMP**
(**AMP** TRADE MARK)
- 3 **OBSOLETE**

THIS DRAWING IS A CONTROLLED DOCUMENT FOR AMP INCORPORATED. IT IS SUBJECT TO CHANGE AND THE CONTROLLING ENGINEERING ORGANIZATION SHOULD BE CONTACTED FOR THE LATEST REVISION. QUESTO DISEGNO E' UN DOCUMENTO DI PROPRIETA' E RESPONSABILITA' DELL'AMP INCORPORATED SOGGETTO A VARIAZIONI. PER OTTENERE L'ULTIMA REVISIONE DEL DISEGNO CONTATTARE L'UFFICIO TECNICO RESPONSABILE		DWN / DIS. 22JUN98 F. BORIN CHK / CONT. 22JUN98 C. TARTARI APVD / APP. -		AMP AMP Italia S.p.A. Collegno, C.so F.lli Cervi 15	
DIMENSIONS: DIMENSIONI: mm		TOLERANCES UNLESS OTHERWISE SPECIFIED: TOLLERANZE SE NON DIVERSAMENTE SPECIFICATO		NAME NONE FASTIN-FASTON™ CONNECTOR .250 SRS.TAB HOUSING, 11 POS.	
		0 PLC / DEC ±- 1 PLC / DEC ±- 2 PLC / DEC ±- 3 PLC / DEC ±- 4 PLC / DEC ±- ANGLES / ANGOLI ± 2°		PRODUCT SPEC SPEC DI PRODOTTO 108-20020 APPLICATION SPEC SPEC DI APPLICAZIONE	
MATERIAL MATERIALE SEE TABLE		FINISH FINITURA		WEIGHT PESO A3 00779 C-280263	
CUSTOMER DRAWING		DISEGNO PER CLIENTE SOLO PER RIFERIMENTO		SCALE 2.5:1 SHEET OF REV SCALA 2.5:1 FOGLIO DI L	

单击下面可查看定价，库存，交付和生命周期等信息

[>>TE Connectivity\(泰科\)](#)